

Research has identified eight to ten emerging MegaRegions

SOURCE: University of Pennsylvania

Download the *American 2050 Prospectus*
www.america2050.org

HIGH-SPEED RAIL CORRIDORS



SOUTHEAST HIGH SPEED RAIL

TIER I – WASHINGTON, DC to CHARLOTTE, NC
TIER II – RICHMOND, VA to RALEIGH, NC

Leadership, Cooperation, Creative Energy

- USDOT Designation
- Safety Funds develop sealed corridor
- Planning funds develop feasibility model
- Joint MOU allows synergy in grant applications and spin off effects
- Tiered approach
- VA/NC HSR Compact
- PL 110-432



Bringing You Up To Date

.1998 MOU VDRPT, NCDOT Rail, FRA, FHWA

.1999 Tier I, joint effort

-9 alternatives

-over 1200 miles of rail right of way

-over 7000 phone contacts

-over 225,000 direct mail contacts

-26 public workshops, 26 officials workshops

-18 public hearings

.2002 ROD by FRA and FHWA

SOUTHEAST HIGH SPEED RAIL

TIER I – WASHINGTON, DC to CHARLOTTE, NC
TIER II – RICHMOND, VA to RALEIGH, NC

Primary Outcomes from Tier I EIS

1. Established Purpose and Need
2. Modal Alternatives Analysis
3. Established preferred study corridor



SOUTHEAST HIGH SPEED RAIL

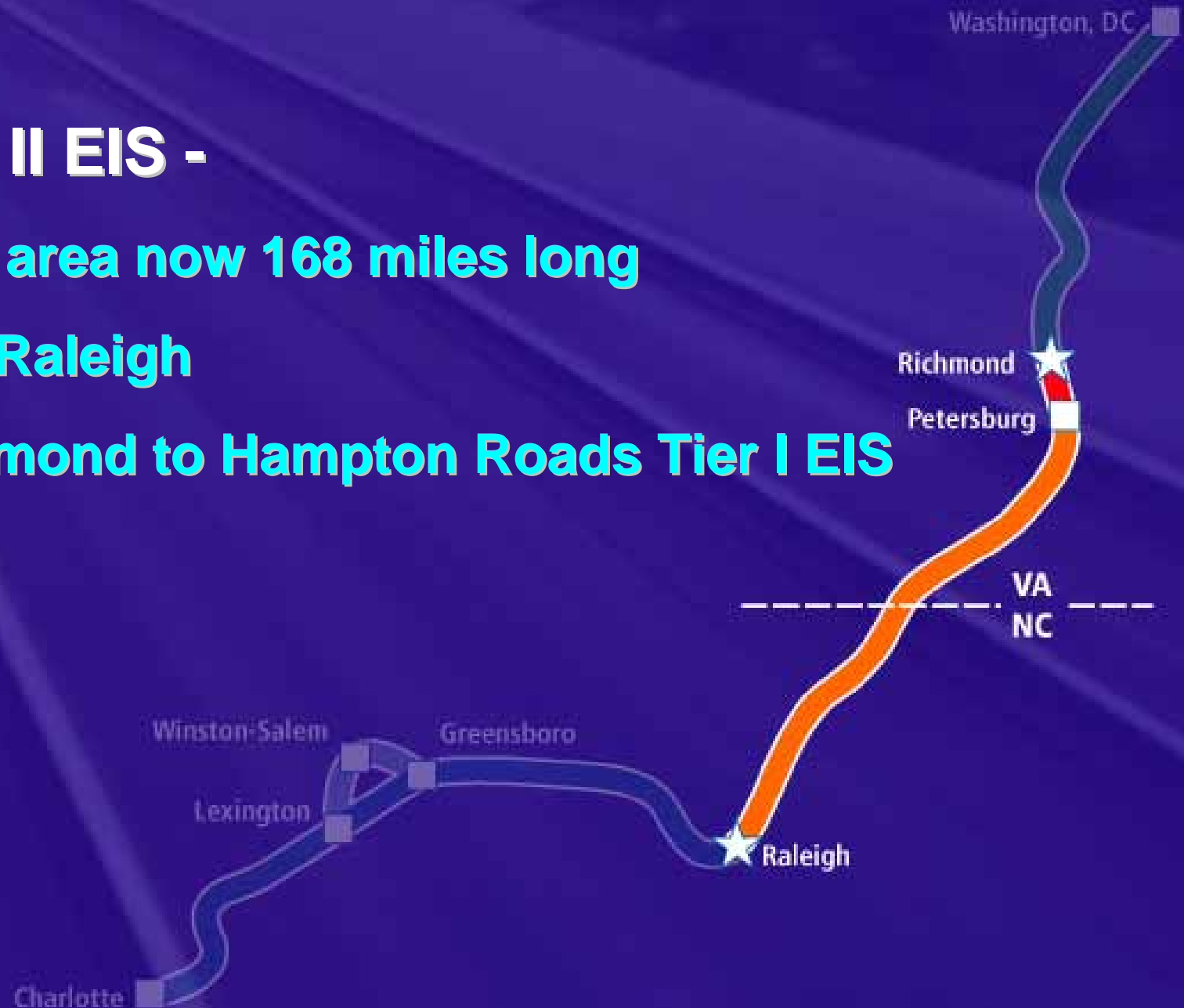
TIER I – WASHINGTON, DC to CHARLOTTE, NC
TIER II – RICHMOND, VA to RALEIGH, NC

Current Tier II EIS -

-Project study area now 168 miles long

-Richmond to Raleigh

-Links to Richmond to Hampton Roads Tier I EIS



SOUTHEAST HIGH SPEED RAIL

TIER I – WASHINGTON, DC to CHARLOTTE, NC
TIER II – RICHMOND, VA to RALEIGH, NC

Upcoming Project Milestones (targets)

-2010 Complete Draft EIS and Public Hearings

(note: this is the point that the public reviews the proposed designs and gives comments/concerns)

-2011 Complete Final EIS and Record of Decision



SOUTHEAST HIGH SPEED RAIL

TIER I - WASHINGTON, DC to CHARLOTTE, NC
TIER II - RICHMOND, VA to RALEIGH, NC

For more info:

www.sehsr.org

David B. Foster, PE, 919-733-7245 x 266

