



WILMINGTON URBAN AREA Metropolitan Planning Organization

P.O. Box 1810
Wilmington, North Carolina 28402
910 341 3258 910 341 7801 FAX

Meeting Agenda

Wilmington Urban Area MPO
Transportation Advisory Committee

Members:

City of
WILMINGTON
Lead Planning Agency

Town of
CAROLINA BEACH

Town of
KURE BEACH

Town of
WRIGHTSVILLE BEACH

NEW HANOVER
County

Town of
BELVILLE

Town of
LELAND

Town of
NAVASSA

BRUNSWICK
County

PENDER
County

CAPE FEAR
Public Transportation
Authority

North Carolina
BOARD OF
TRANSPORTATION

TO: Transportation Advisory Committee Members
FROM: Mike Kozlosky, Senior Transportation Planner
DATE: May 24, 2007
SUBJECT: May 30, 2007 Meeting

A meeting of the Wilmington Urban Area MPO Transportation Advisory Committee will be held on **Wednesday, May 30th at 4:00pm**. The meeting will be held in the in the Lord Spencer Compton Conference Room at City Hall in downtown Wilmington.

The following is the agenda for the meeting:

- 1) Call to Order
- 2) Approval of Minutes:
 - a. 4/25/07
- 3) Public Comment
- 4) Old Business
 - a. Consideration of US 17 Business Corridor Study
- 5) New Business
 - a. Coastal Pender Collector Street Plan
 - b. 2007-13 Metropolitan and Statewide Transportation Improvement Program
 - c. MPO Transportation Model
 - d. Support for a service road adjacent to US 74/ US 76
 - e. Discussion regarding the 6th Avenue/ Wooster Street intersection
 - f. Discussion regarding the Brunswick Connector
 - g. 2006 Accident Report
- 6) Project Updates
 - a. Update on Blue Clay Road Bicycle Corridor Study
 - b. Cape Fear Historic Byway
 - c. NCDOT Project Update
- 7) Announcements
- 8) Adjournment -- Next Meeting -- June 27th

Attachments:

- Minutes from 4/25 Meeting
- US 17 Business Corridor Plan (can be found at www.wmpo.org)
- Resolution supporting the US 17 Business Corridor Study
- Coastal Pender County Collector Street Plan (can be found at www.wmpo.org)
- Resolution endorsing the Coastal Pender Collector Street Plan
- 2007- 2013 Metropolitan Transportation Improvement Program
- Resolution endorsing 2007- 2013 Metropolitan and Statewide Transportation Improvement Program
- Wilmington MPO Transportation model mapping (can be found at www.wmpo.org)
- Resolution endorsing the Wilmington MPO's Transportation Model
- Map of proposed service road adjacent to US 74/ US 76
- Resolution endorsing support for a service road adjacent to US 74/76
- NCDOT project update

Meeting Minutes
Wilmington Urban Area Metropolitan Planning Organization
Transportation Advisory Committee
Date: April 25, 2007

Members Present:

Lanny Wilson, Chairman, NC Board of Transportation
Mike Ballard, Town of Navassa
Catherine Brunjes, Town of Wrightsville Beach
Tim Fuller, Town of Kure Beach
Alan Gilbert, Town of Carolina Beach
Laura Padgett, City of Wilmington
Nancy Pritchett, Cape Fear Public Transit Authority
Bill Saffo, City of Wilmington
Dennis Taylor, Town of Belville
Tommy Wallace, Town of Leland

Staff Present:

Mike Kozlosky, Senior Planner
Joshuah Mello, Associate Planner
Anthony Prinz, Associate Planner
Lawless Bean, TDM Coordinator

1. Call to Order

Mr. Wilson called the meeting to order at 4:00 PM.

2. Approval of Minutes

Mr. Kopp made the motion to approve the minutes from the March 28th meetings and Mr. Wallace seconded the motion. The motion carried unanimously.

3. Public Comment Period

No one requested to speak.

4. Presentations

a. Transportation Funding Overview

Mr. Wilson introduced Mr. Burt Tasaico, with the North Carolina Department of Transportation who will give a presentation on the status of funding for highways from both the state and federal prospective.

Mr. Tasaico told members North Carolina is the 10th most populated state in the country. Vehicle Miles Traveled (VMT) have increased between 1970 and 2005 by 240%, and at the same time the population for the state has grown by about 45%. If you take the 2005 state dollars and adjust for inflation back to 1970, you will see that revenue has not kept up. North Carolina has the 2nd largest publicly maintained road system, with about 78,000 center-line miles. North Carolina has three main sources for funding for transportation. They are the Highway Use Tax, Gas Tax, and fees and interest on funds balances. That funding falls into three fund sources, the Highway Fund, the Federal Aid money, and the Highway Trust Fund. The Federal Highway Trust will become insolvent in Federal Fiscal Year '09 or '10 and they are currently searching for other sources for funds. The State's transportation revenue source funds are generated from three sources. 55% of the funding comes from the motor fuel tax, 25% from highway use tax and 20% of the funding is generated from fees collected. Funds allocation is handled by balancing available funds and all the needs. When referring the funding gap, what use to be a \$30 billion gap, is now a \$65 billion gap. Revenue is just not

keeping up. Construction inflation has increased 65% since 2001. He told members they are currently working on ideas to help generate additional funding sources.

Mr. Tasaico told members if anyone would like to have copies of today's presentation to contact him.

b. US 17 Business Corridor Study

Mr. Kozlosky introduced Mr. Brock LaForty with STV/Ralph Whitehead who gave a presentation on the US 17 Business corridor study.

Mr. LaForty told members the initial study looked at road diet measures on Market Street and the possibility of reverting 16th and 17th Streets back to two-way traffic. The conversion of 16th and 17th Streets proved not to be possible so the study focused on "road diet" measures on Market Street. As part of the study, it was determined that once Independence Boulevard Extension and Military Cutoff Extension are complete, it would be feasible to revert Market Street back to more of a neighborhood street and implement a median island and decrease the number of lanes from two to one in each direction and install bike lanes and parking. The steering committee consisted of MPO Staff, City of Wilmington Department Staff, Chamber of Commerce and NCDOT members. The consultant conducted stakeholder interviews and held two public workshops during the process, in which they received feed back from those attending. They also did project newsletters to mail to residents along the corridor. The steering committee and residents felt the project should be implemented in phases, with the first phase being 17th Street to Covil Avenue.

Mr. Kozlosky told members the report was posted on the www.wmpo.org website.

5. Old Business

No items of old business

6. New Business

a. Consideration of US 17 Business Corridor Study

Mr. Kozlosky suggested bringing the resolution supporting the adoption of the plan back to the TAC to request adoption at the next meeting. That will give everyone an opportunity to review the document.

b. Request for NCDOT to appoint a permanent Safe Routes to School Coordinator

Mr. Kozlosky told members the program was established in the SAFETEA-LU legislation and funded in fiscal years 2005 through 2009. It is 100% grant funded and will allow for the installation of improvements for pedestrian and bicycle safety within two miles of K-8 schools. Funding has been allocated; however, NCDOT will not allocate funds until a permanent Safe Routes to School Coordinator has been appointed. MPO staff met with the New Hanover County PTA on January 30th to discuss potential improvements at area schools. Holly Tree and Parsley Elementary Schools are very interested in participating in the program. Today's resolution is requesting that the appointment be made so that we can begin to take advantage of the funding that has been allocated for these projects.

Ms. Padgett made the motion approval of the resolution. Mr. Sue seconded the motion and it carried unanimously.

c. Old Market Street functional classification modification

Mr. Kozlosky told members with the construction of the Wilmington Bypass there was a portion of Market Street that remained in-tact. It connects US 17 with Futch Creek Road. The New Hanover County Planning Department is requesting that the functional classification for this

section of road be changed. Currently it is identified as a principal arterial with a 90-foot right-of-way and 24-feet of pavement width. The vehicle count is approximately 2,000 vehicles per day. In discussions with Federal Highway, they recommend reclassifying it as a collector street. Staff and the TCC also recommend the reclassification.

Mr. Kopp made a motion to endorse the modification and Ms. Padgett seconded the motion. The vote carried unanimously.

d. US 17 Bypass Special Highway Overlay District

Mr. Kozlosky told members through discussion with Mayor Willis, staff has taken the initiative to develop a special highway overlay district for the US 17 Bypass from US 421 to US 17 in Brunswick County. Staff is requesting that members take this proposal back to their local planning boards for discussion. This ordinance was developed using the special highway overlay district that was established for US 17 in New Hanover County as well as language from the City of Raleigh and the City of Wilmington.

Mr. Wilson said it is important that they look at this now because once DOT firms up exactly where the right-of-way is going to be, they will start acquiring the right-of way. New Hanover County did such a great job of protecting it from billboards and other encroachments being located on that portion of the Interstate-140. Mr. Wilson said he believes Mayor Willis has a great suggestion and it would be appropriate at the next meeting that some of those issues that are important with respect to limiting signage on the bypass should be considered.

Ms Padgett stated she hoped the TAC will pass this and make this road as attractive as possible.

Mr. Sue said they have just adopted a unified development ordinance in Brunswick County and they have overlays for the major thoroughfares. Billboards cannot be put but every 3,000 feet. They will need to review this proposed overlay and what they already have in place for comparison.

Mr. Kozlosky said staff will look at the final UDO adopted by Brunswick County and try to incorporate that language, as well as any additional language staff feels could enhance the corridor into a more synchronized document.

e. Wilmington Metropolitan Bicycle Facilities map

Mr. Kozlosky distributed copies of the Wilmington Metropolitan Area Bicycle Facilities Map. He told members the map is being distributed throughout the community. It is the first map in 17 years and was a joint project with Cape Fear Breeze, the BAC and the MPO. It was designed specifically as a map for commuters. Staff anticipates updating the map every two years.

f. Wilmington MPO Brochure

Mr. Kozlosky distributed copies of the new Wilmington MPO brochure. The brochure was created to help give an overview of the MPO organization and how it serves to help facilitate the transportation planning process. Additional copies are available for distribution.

7. Project Updates

a. Update on Blue Clay Road Bicycle Corridor Study

Mr. Kozlosky told members the MPO has hired Greenway, Inc. who has teamed with Parson Brinkerhoff to complete the Blue Clay Road Bicycle Corridor Study. They had the first steering committee meeting this week. Representatives attending the meeting included persons from New Hanover County, the MPO, DOT and CSX. The project competition date is December of this year, with the report being brought back in January of 2008 for endorsement by the TCC and TAC.

b. NCDOT Project Updates

(attached)

8. Announcements

a. Public Informational Meeting – Hampstead Bypass – April 23rd

b. Public Informational Meeting – Military Cutoff Extension – April 24th

9. Adjournment

With no further business, the meeting was adjourned at 5:43pm

Respectfully submitted

Mike Kozlosky
Senior Transportation Planner
/pb



STATE OF NORTH CAROLINA
DEPARTMENT OF TRANSPORTATION

MICHAEL F. EASLEY
GOVERNOR

DIVISION OF HIGHWAYS

LYNDO TIPPETT
SECRETARY

March 28, 2007

TIP Projects:

1. **MLK Pkwy:U-0092 A**, awaiting signal mast arms before completing signal work and opening the second left turn lane onto the Isabel Holmes bridge, off 3rd Street, from downtown Wilmington.
2. **US 17 Wilmington Bypass: R-2405 A**...US 17 north of Wilmington, near Scotts Hill to I-40 contractor has recently opened the "Super-Street" section from Porter's Neck interchange to approximately 0.5 mile north of SR 1571 (Scott's Hill Road). We are still awaiting right of way for the completion of all the bulb-outs, for U-turn movements.

This opens the corridor from US 17 north of Wilmington to US 421 northwest of Wilmington.

3. **Military Cutoff (U-2734)**, constructing a multi-lane facility from US 17 (Market Street) to US 74 (Eastwood Drive). The traffic has been shifted near Mayfaire Town Center to construct the other half of the culvert. **Estimated Completion August 2007**
4. **R-3601 US 17/74/76**: Widening across the "causeway", between Leland and Wilmington. Just beginning the planning process. We will move into the merger process afterwards and then to design. A scoping meeting will be held in the next couple of months. The TIP schedule has R/W for 2011 and Construction for 2012
5. **U-4902 A**: construct a concrete median island from SR 2649 (Martin Luther King Parkway) to SR 1272 (New Center Drive). Contract has been awarded to Kinston Contractors. **Estimated Contract Completion Date Spring 2007**
6. **U-4902 B**: construct a concrete median island from SR 1402 (Porter's Neck Road) to Colonial Drive (non-system road). Project is in the planning process. **A Public Workshop was held on February 13, 2007 at Noble Middle School.**
7. **B-0682**: Bridge to Sunset Beach over the intercoastal waterway. Letting date 4/17/2007.
8. **R-2245**: Second bridge to Oak Island over the intercoastal waterway. Letting date 5/15/2007.

NCMA Brunswick County:

- **NC 211** We will be widening & resurfacing NC 211 from the entrance of St. James to NC 133 (Doscher Cutoff). The work will consist of resurfacing and some widening at the intersection with the entrance to St. James. The current approximate cost of the project is \$3,610,000.00. **Work Complete**

NCMA Pender County:

- **NC 210** from US 17 to NC 50 (going to the beach) will be widen and resurfaced. Pipe replacement work has been completed. **Work Complete**

- **NC 133** from US 117 to NC 210 will be widened and resurfaced. State forces to place pipe in the lateral ditch at certain areas. Pipe replacement work has been completed. Project has been let and the availability date is February 7, 2005. **99% Complete (Placing the pavement marking Spring 2007)**
- **US 421** from NC 210 to Sampson County Line, resurface. Project has been let and the availability date is February 7, 2005. **99% Complete (Placing the pavement marking Spring 2007)**

Brunswick County Resurfacing Projects:

- **US 17** the Shallotte Bypass and ramps. The Contractor will not be allowed to work on the weekends. The Contractor is limited to night work from Monday to Thursday. The availability date is January 5, 2005 and the completion date is November 1, 2005. **Work complete**
- **NC 133 Doshier Cutoff Road**, patch and resurface from NC 87 to NC 211. **Work complete**
- **US 17 Super Street Project (Leland)**: signal poles, drainage and grading. The speed limit has been reduced to 45 mph. **Work complete**
- **SR 1342 (Big Macedonia Road)** patching and resurfacing from NC 211 to SR 1343 (Little Macedonia Road). **Work complete**
- **SR 1426 (Mt. Misery Road)** resurface from northwestern city limit to SR 1419 (Northwest Road). **Work complete on all these maps**

Also included in the same contract:

- SR 1443 (Broadway Street)** widen and resurface from SR 1434 (Main Street) to SR 1435 (Navassa Road).
 - SR 1423 (Vernon Road)** resurface from SR 1426 (Mt. Misery Road) to SR 1422 (Blue Banks Loop).
 - SR 1190 (Oak Island Drive)** resurface from 46th Street to 65th Street.
- **NC 87 (Maco Road)** patch and resurface from 0.3 miles north of US 17 to 0.03 miles south of US 74/76. The patching is almost complete on NC 87.
Also included in the same contract: (Completion Date 8/1/2007)
 - SR 1167 (Persimmon Road)** resurface from US 17 to NC 179.
 - SR 1120 (Sabbath Home Road)** resurface from 0.06 miles northeast of NC 130 to SR 1122 (Varnamtown Road).
 - SR 1513 (Danford Road)** patch and resurface from US 17 Business to east Bolivia City Limit.
 - SR 1245 (Maple Creek Road)** patch and resurface from SR 1115 (Stone Chimney Road) to the end of state system.

New Hanover County:

- **NC 132** College Road from SR 1318 (Blue Clay Road) to the beginning of the divided highway. **Work complete**
- **Signing Project**: Division and Raleigh Signing are revisiting the signing for the Parkway and the Bypass. Authorization for funding has been approved. Sign structures are in design and we have ordered the signs. Let on August 8, 2006. Under construction Completion Summer 2007
- **SR 1272 (New Center Drive)**: widening the 4-lane portion of the roadway to 5-lanes. **Estimated completion date Summer 2007.**
- **US 421** mill and resurface from West Lake Shore Drive (non-system) to Greenfield Street (non-system).
Also included in the same contract: (Let Date 12/19/2006...Comp. Date 6/1/2007)

SR 2048 (Gordon Road) resurface from SR 1175 (Kerr Ave.) to SR 2698 (Netherlands Drive).

SR 1411 (Wrightsville Ave.) resurface from US 117 to West Huntington Road (non-system).

NC 210 mill patch from I-40 to 0.2 miles northwest of US 17. (Length 13.05 miles)

Pender County:

- **NC 210** from SR 1101 (Point Caswell Road) to US 421. **Work complete**
- **SR 1571 (Scott's Hill Loop Road)** widen and resurface from US 17 to US 17. **Work complete**
- **NC 210** resurface from Bladen County line to SR 1101 (Point Caswell Road). Awarded to S. T. Wooten. **Revised Completion Date 5/15/2007**

**WILMINGTON URBAN AREA METROPOLITAN PLANNING ORGANIZATION
TRANSPORTATION ADVISORY COMMITTEE**

RESOLUTION SUPPORTING THE ADOPTION OF THE US 17 BUSINESS CORRIDOR PLAN

WHEREAS, the US 17 Business Corridor Study was initially developed to analyze the feasibility of reducing the number of lanes on Market Street and reverting 16th and 17th Street back to two-way traffic; and

WHEREAS, after further evaluation, due to delays at the Dawson and Wooster intersections, reverting 16th and 17th Streets back to two-way traffic was determined unfeasible; and

WHEREAS, based on these findings the studied focused on the installation of “road diet” measures on Market Street between Covil Avenue and 3rd Street; and

WHEREAS, the typical section varies along US 17 Business from a 4-lane divided cross-section with limited on-street parking between 3rd and 16th streets, then the typical cross-section narrows to a 36-foot section with 9 foot lanes and no median, then the typical cross-section widens back out to match a 5-lane cross-section; and

WHEREAS, the US 17 Business Corridor Study recommends with the completion of the Military Cutoff Extension and Independence Boulevard Extension, the anticipated traffic volumes would permit the reduction of lanes on Market Street between Covil Avenue and Third Street; and

WHEREAS, the US 17 Business Corridor Study recommends the installation of bicycle lanes, parking (in some locations), a median and the reduction in lanes on US 17 Business between Third Street and Covil Avenue; and

WHEREAS, the Transportation Advisory Committee supports the findings of the US 17 Business Corridor Study.

NOW THEREFORE, be it resolved that the Transportation Advisory Committee of the Wilmington Urban Area Metropolitan Planning Organization hereby adopts the US 17 Business Corridor Study.

ADOPTED at a regular meeting of the Wilmington Urban Area Metropolitan Planning Organization Transportation Advisory Committee on May 30, 2007.

Lanny Wilson, Chair
Transportation Advisory Committee

Mike Kozlosky, Secretary

**WILMINGTON URBAN AREA METROPOLITAN PLANNING ORGANIZATION
TRANSPORTATION ADVISORY COMMITTEE**

RESOLUTION ADOPTING THE COASTAL PENDER COLLECTOR STREET PLAN

WHEREAS, the Wilmington Urban Area Metropolitan Planning Organization provides transportation planning services for the City of Wilmington, Town of Carolina Beach, Town of Kure Beach, Town of Wrightsville Beach, Town of Belville, Town of Leland, Town of Navassa, New Hanover County, Brunswick County, Pender County, Cape Fear Public Transportation Authority and the NC Board of Transportation; and

WHEREAS, based on the North Carolina State Demographic office estimations, Pender County has experienced an increase in population of 18.6 percent between 2000 and 2006, and

WHEREAS, the majority of this growth is occurring in the Scotts Hill and Hampstead areas of Pender County; and

WHEREAS, the Wilmington Urban Area Metropolitan Planning Organization and Pender County embarked on the development of the Coastal Pender Collector Street Plan with the goal of preserving, planning, developing and enhancing the local transportation network; and

WHEREAS, the Coastal Pender Collector Street Plan seeks to achieve the goals of increased safety, improved traffic flow, better interconnectivity, expanded multi-modal opportunities, improved aesthetics, and more plentiful pedestrian and bicycle facilities; and

WHEREAS, the purpose of the Coastal Pender Collector Street Plan is to inventory the existing collector street network and develop standards and policies that will promote future connectivity and provide accommodations for multiple modes as collector streets are constructed; and

WHEREAS, the Coastal Pender Collector Street Plan identifies recommendations and an implementation action plan to incorporate the collector street planning process into the county zoning and subdivision ordinances and the development review process.

NOW THEREFORE, be it resolved that the Wilmington Urban Area Metropolitan Planning Organization Transportation Advisory Committee hereby adopts the Coastal Pender Collector Street Plan.

ADOPTED at a regular meeting of the Transportation Advisory Committee on May 30, 2007.

Lanny Wilson, Chair
Transportation Advisory Committee

Mike Kozlosky, Secretary

TRANSPORTATION PROGRAM

WILMINGTON URBAN AREA METROPOLITAN PLANNING ORGANIZATION

ROUTE/CITY COUNTY	ID. NO. / BREAK	LOCATION - DESCRIPTION - MILEAGE - BREAK	WORK TYPE	FUNDING SOURCE	COST ESTIMATES (THOU)	SCHEDULE (FISCAL YEARS)
INTERSTATE PROJECTS						
I-40 SAMPSON DUPLIN PENDER NEW HANOVER JOHNSTON	I-4702	SR 1122 (MILEPOST 339) IN JOHNSTON COUNTY TO NC 132 (MILEPOST 420) IN NEW HANOVER COUNTY. SEAL EXISTING SHOULDERS. 81 Mile(s)	CONSTRUCTION	IM	1,700	FY 09
TOTAL PROJECT COST					1,700	
RURAL PROJECTS						
US 17 BRUNSWICK NEW HANOVER	R-2633*	WILMINGTON BYPASS, US 17 SOUTH OF NC 87 IN BRUNSWICK COUNTY TO I-40 IN NEW HANOVER COUNTY. FOUR LANE DIVIDED FREEWAY ON NEW LOCATION. 20.2 Mile(s)	PLANNING/DESIGN MITIGATION	T	206,622 3,510	PRIOR YEARS IN PROGRESS FY 08
	A	NC 87 SOUTH OF BISHOP TO US 74-76 EAST OF MALMO IN BRUNSWICK COUNTY.	RIGHT-OF-WAY CONSTRUCTION	T T	10,850 70,000	FY 08 UNFUNDED
	B	US 74-76 EAST OF MALMO IN BRUNSWICK COUNTY TO US 421 NORTH OF WILMINGTON IN NEW HANOVER COUNTY.	RIGHT-OF-WAY CONSTRUCTION	T T	10,250 203,700	FY 08 FY 11
	CA	WEST OF US 421 NORTH OF WILMINGTON TO WEST OF US 117-NC 133.	CONSTRUCTION			COMPLETE
	CB	WEST OF US 117-NC 133 TO EAST OF NC 132.	CONSTRUCTION			COMPLETE
	CC	EAST OF NC 132 TO EAST OF I-40 SOUTH OF CASTLE HAYNE.	CONSTRUCTION			COMPLETE
TOTAL PROJECT COST					504,932	
US 17 PENDER NEW HANOVER	R-3300*	HAMPSTEAD BYPASS, PROPOSED I-140 TO US 17 NORTH OF HAMPSTEAD. CONSTRUCT MULTI-LANE FACILITY ON NEW LOCATION. 14 Mile(s)	PLANNING/DESIGN RIGHT-OF-WAY CONSTRUCTION	T T T	4,200 15,800 132,000	IN PROGRESS FY 12 UNFUNDED UNFUNDED
TOTAL PROJECT COST					152,000	

* INDICATES INTRASTATE PROJECT

GREEN TEXT INDICATES DELIVERABLE STIP PROJECT

TRANSPORTATION PROGRAM

WILMINGTON URBAN AREA METROPOLITAN PLANNING ORGANIZATION

ROUTE/CITY COUNTY	ID. NO. / BREAK	LOCATION - DESCRIPTION - MILEAGE - BREAK	WORK TYPE	FUNDING SOURCE	COST ESTIMATES (THOU)	SCHEDULE (FISCAL YEARS)
RURAL PROJECTS						
US 17 BRUNSWICK	R-4732	SOUTH CAROLINA STATE LINE TO US 74-76. ACCESS MANAGEMENT IMPROVEMENTS.	PLANNING/DESIGN		670	PRIOR YEARS IN PROGRESS
	A	SC STATE LINE TO US 74-76. ACCESS MANAGEMENT IMPROVEMENTS AT VARIOUS LOCATIONS.	CONSTRUCTION	NHS	10,000	FY 10
TOTAL PROJECT COST					10,670	
US 17-74-76 BRUNSWICK	R-3601	NC 133-SR 1472 INTERCHANGE TO THE US 421-NC 133 INTERCHANGE. ADD ADDITIONAL LANES ON NORTH AND SOUTHBOUND LANES AND WIDEN BRIDGE NO. 107 AND BRIDGE NO. 108. 1.5 Mile(s)	RIGHT-OF-WAY CONSTRUCTION	NHS S(M)	200 3,219	FY 11 FY 12
	PB	REPAYMENT OF GARVEE BOND AMOUNT	CONSTRUCTION	NHS	16,956	FY 12
TOTAL PROJECT COST					20,375	
STRATEGIC HIGHWAY CORRIDOR		GARVEE BOND FUNDING \$12.88 MILLION, CONSTRUCTION; PAYBACK FY 2012-2023			20,375	
SR 1472 VILLAGE DRIVE BRUNSWICK	R-4002	WEST OF SR 1437 (OLD FAYETTEVILLE ROAD)-SR 1435 (NAVASSA ROAD) TO EAST OF US 17 INTERCHANGE RAMPS WITH DUAL LEFT TURN LANES ON NORTH RAMP TO US 17. WIDEN TO MULTI-LANES. 0.9 Mile(s)	PLANNING/DESIGN RIGHT-OF-WAY MITIGATION CONSTRUCTION		1,932 48 7,200	PRIOR YEARS IN PROGRESS IN PROGRESS FY 07 FY 08
TOTAL PROJECT COST					9,180	
SR 1472 VILLAGE DRIVE BRUNSWICK	R-4063	SR 1435 (SOUTH NAVASSA ROAD) TO SR 1438 (LANVALE ROAD). WIDEN TO MULTI-LANES. 3.4 Mile(s)	PLANNING/DESIGN RIGHT-OF-WAY CONSTRUCTION		536 3,850 11,600	PRIOR YEARS IN PROGRESS FY 12 FY 13
TOTAL PROJECT COST					15,986	
SR 1573 DOW ROAD NEW HANOVER	R-4708	US 421 (LAKE PARK BOULEVARD) IN CAROLINA BEACH TO US 421 (FORT FISHER BOULEVARD) IN KURE BEACH. WIDEN TO MULTI-LANES. 3.9 Mile(s)	RIGHT-OF-WAY CONSTRUCTION	STP STP	9,400 14,000	UNFUNDED UNFUNDED
TOTAL PROJECT COST					23,400	
VARIOUS DARE NEW HANOVER BRUNSWICK	M-0389	STORMWATER PILOT PROGRAM, DARE, NEW HANOVER AND BRUNSWICK COUNTIES. DEVELOP NEW AND INNOVATIVE TECHNOLOGIES AND FILTERING MECHANISMS TO "CLEAN UP" DISCHARGES FROM NCDOT MAINTAINED OUTFALLS AND ASSOCIATED OUTLETS.	CONSTRUCTION		15,000	PRIOR YEARS IN PROGRESS
TOTAL PROJECT COST					15,000	

* INDICATES INTRASTATE PROJECT

GREEN TEXT INDICATES DELIVERABLE STIP PROJECT

COST AND SCHEDULES ARE PRELIMINARY AND SUBJECT TO SIGNIFICANT CHANGE AS MORE INFORMATION BECOMES AVAILABLE

TRANSPORTATION PROGRAM

WILMINGTON URBAN AREA METROPOLITAN PLANNING ORGANIZATION

ROUTE/CITY COUNTY	ID. NO. / BREAK	LOCATION - DESCRIPTION - MILEAGE - BREAK	WORK TYPE	FUNDING SOURCE	COST ESTIMATES (THOU)	SCHEDULE (FISCAL YEARS)
URBAN PROJECTS						
US 17 MARKET STREET NEW HANOVER	U-4902	COLONIAL DRIVE TO SR 1402 (PORTERS NECK ROAD). ACCESS MANAGEMENT IMPROVEMENTS.	PLANNING/DESIGN RIGHT-OF-WAY	NHS	465 500	PRIOR YEARS IN PROGRESS FY 09
	A	SR 1272 (NEW CENTRE DRIVE) TO MARTIN LUTHER KING JR., BOULEVARD.	CONSTRUCTION			IN PROGRESS
	B	COLONIAL DRIVE TO SR 1272 (NEW CENTRE DRIVE).	CONSTRUCTION	NHS	2,600	UNFUNDED
	C	MARTIN LUTHER KING JR., BOULEVARD TO SR 1409 (MILITARY CUTOFF ROAD).	CONSTRUCTION	NHS	2,600	FY 10
	D	SR 1409 (MILITARY CUTOFF ROAD) TO SR 1402 (PORTERS NECK ROAD).	CONSTRUCTION	NHS	4,800	FY 10
TOTAL PROJECT COST					10,965	
US 74-76 BRUNSWICK	U-3337	SR 1437 (OLD FAYETTEVILLE ROAD). CONVERT GRADE SEPARATION TO AN INTERCHANGE.	PLANNING/DESIGN RIGHT-OF-WAY CONSTRUCTION	NHS NHS	500 700 3,750	PRIOR YEARS IN PROGRESS FY 12 UNFUNDED
TOTAL PROJECT COST					4,950	
US 76 OLEANDER DRIVE NEW HANOVER	U-4903	INDEPENDENCE BOULEVARD TO 17TH STREET. MILL AND RESURFACE.	CONSTRUCTION	S	900	FY 10
TOTAL PROJECT COST					900	
SR 1411 WRIGHTSVILLE AVENUE NEW HANOVER	U-4733	SR 2313 (WILSHIRE BOULEVARD) TO FOREST HILLS DRIVE. INTERSECTION IMPROVEMENTS.	RIGHT-OF-WAY CONSTRUCTION	STP	2,360 2,050	PRIOR YEARS IN PROGRESS FY 08
TOTAL PROJECT COST					4,410	
NEW ROUTE NEW HANOVER BRUNSWICK	U-4738*	US 17 TO INDEPENDENCE BOULEVARD-CAROLINA BEACH ROAD INTERSECTION. CONSTRUCT A NEW FACILITY WITH STRUCTURE OVER THE CAPE FEAR RIVER. 9.5 Mile(s)	RIGHT-OF-WAY CONSTRUCTION	T T	3,654 15,200 380,000	PRIOR YEARS UNFUNDED UNFUNDED
STRATEGIC HIGHWAY CORRIDOR		PROJECT CURRENTLY UNDER STUDY BY THE NORTH CAROLINA TURNPIKE AUTHORITY - PROGRAMMED FOR PLANNING AND ENVIRONMENTAL STUDY ONLY	TOTAL PROJECT COST		398,854	

* INDICATES INTRASTATE PROJECT

GREEN TEXT INDICATES DELIVERABLE STIP PROJECT

COST AND SCHEDULES ARE PRELIMINARY AND SUBJECT TO SIGNIFICANT CHANGE AS MORE INFORMATION BECOMES AVAILABLE

TRANSPORTATION PROGRAM

WILMINGTON URBAN AREA METROPOLITAN PLANNING ORGANIZATION

ROUTE/CITY COUNTY	ID. NO. / BREAK	LOCATION - DESCRIPTION - MILEAGE - BREAK	WORK TYPE	FUNDING SOURCE	COST		SCHEDULE (FISCAL YEARS)
					ESTIMATES (THOU)		
URBAN PROJECTS							
NEW ROUTE	U-4751*	SR 1409 (MILITARY CUTOFF ROAD) TO THE PROPOSED WILMINGTON BYPASS (R-2405). MULTI-LANES ON NEW LOCATION. 4 Mile(s)	PLANNING/DESIGN		1,800		PRIOR YEARS IN PROGRESS
			RIGHT-OF-WAY	T	18,100		FY 12
			CONSTRUCTION	T	31,700		UNFUNDED
NEW HANOVER							
STRATEGIC HIGHWAY CORRIDOR			TOTAL PROJECT COST		51,600		
WILMINGTON	U-2724	NC 133, MARTIN LUTHER KING, JR. PARKWAY TO SR 1002 (HOLLY SHELTER ROAD) AT CASTLE HAYNE AND ALONG SR 1002 TO I-40. WIDEN TO MULTI-LANES. 7.3 Mile(s)	RIGHT-OF-WAY	STP	10,700		UNFUNDED
			CONSTRUCTION	STP	23,400		UNFUNDED
NEW HANOVER							
			TOTAL PROJECT COST		34,100		
WILMINGTON	U-2734	SR 1409 (MILITARY CUTOFF ROAD), MULTI-LANES NORTH OF US 74 TO US 17. WIDEN TO MULTI-LANES. 2.2 Mile(s)	CONSTRUCTION		31,804		PRIOR YEARS IN PROGRESS
NEW HANOVER							
			TOTAL PROJECT COST		31,804		
WILMINGTON	U-3338	SR 1175 (KERR AVENUE), US 76 (OLEANDER AVENUE) TO SR 2649 (MARTIN LUTHER KING, JR. PARKWAY). WIDEN TO MULTI-LANES. 3.1 Mile(s)	PLANNING/DESIGN		750		PRIOR YEARS IN PROGRESS
			MITIGATION	STP	160		FY 10
NEW HANOVER							
	A	US 76 (OLEANDER AVENUE) TO RANDALL PARKWAY.	RIGHT-OF-WAY	STP	3,240		UNFUNDED
			CONSTRUCTION	STP	6,300		UNFUNDED
	B	RANDALL PARKWAY TO SR 2649 (MLK, JR. PARKWAY).	RIGHT-OF-WAY	STP	3,240		FY 09
			CONSTRUCTION	STP	7,300		FY 11
	C	SR 1175 (KERR AVENUE) INTERCHANGE AT SR 2649 (MLK, JR. PARKWAY).	RIGHT-OF-WAY	STP	1,620		FY 12
			CONSTRUCTION	STP	6,600		UNFUNDED
			TOTAL PROJECT COST		29,210		
WILMINGTON	U-3831	SR 2048 (GORDON ROAD), NC 132 INTERCHANGE RAMP TO WEST OF US 17 (MARKET STREET). WIDEN TO MULTI-LANES. 2.4 Mile(s)	PLANNING/DESIGN		250		PRIOR YEARS IN PROGRESS
NEW HANOVER							
	A	NC 132 INTERCHANGE RAMP TO SR 2270 (WOOD SORRELL ROAD).	RIGHT-OF-WAY	S	100		FY 08
			CONSTRUCTION	S	1,000		FY 09
	B	NC 132 INTERCHANGE RAMP TO WEST OF US 17 (MARKET STREET).	RIGHT-OF-WAY	STP	4,200		UNFUNDED
			CONSTRUCTION	STP	9,000		UNFUNDED
			TOTAL PROJECT COST		14,550		

* INDICATES INTRASTATE PROJECT

GREEN TEXT INDICATES DELIVERABLE STIP PROJECT

COST AND SCHEDULES ARE PRELIMINARY AND SUBJECT TO
SIGNIFICANT CHANGE AS MORE INFORMATION BECOMES AVAILABLE

TRANSPORTATION PROGRAM

WILMINGTON URBAN AREA METROPOLITAN PLANNING ORGANIZATION

ROUTE/CITY COUNTY	ID. NO. / BREAK	LOCATION - DESCRIPTION - MILEAGE - BREAK	WORK TYPE	FUNDING SOURCE	COST ESTIMATES (THOU)	SCHEDULE (FISCAL YEARS)
URBAN PROJECTS						
WILMINGTON	U-4434*	INDEPENDENCE BOULEVARD EXTENSION, RANDALL PARKWAY TO MARTIN LUTHER KING, JR. PARKWAY. MULTI-LANES ON NEW LOCATION. 1.7 Mile(s)	PLANNING/DESIGN		320	PRIOR YEARS IN PROGRESS
			RIGHT-OF-WAY	T	17,180	UNFUNDED
			CONSTRUCTION	T	20,000	UNFUNDED
NEW HANOVER						
STRATEGIC HIGHWAY CORRIDOR		PROGRAMMED FOR PLANNING AND ENVIRONMENTAL STUDY ONLY	TOTAL PROJECT COST		37,500	
WILMINGTON	U-4436*	SR 1318 (BLUE CLAY ROAD) AND WILMINGTON BYPASS (R-2633CB). CONSTRUCT AN INTERCHANGE.	RIGHT-OF-WAY	T	453	PRIOR YEARS UNFUNDED
			CONSTRUCTION	T	2,375	UNFUNDED
					6,100	UNFUNDED
NEW HANOVER						
		PROGRAMMED FOR PLANNING AND ENVIRONMENTAL STUDY ONLY	TOTAL PROJECT COST		8,928	
WILMINGTON	U-4718	US 76 (OLEANDER DRIVE) AND NC 132 (COLLEGE ROAD). INTERSECTION IMPROVEMENTS.	PLANNING/DESIGN		852	PRIOR YEARS IN PROGRESS
			RIGHT-OF-WAY	NHS	10,000	FY 09
			CONSTRUCTION	NHS	5,050	FY 11
NEW HANOVER						
			TOTAL PROJECT COST		15,902	
WILMINGTON	U-4920	RANDALL PARKWAY, INDEPENDENCE BOULEVARD/COVIL AVENUE TO SOUTH COLLEGE ROAD.	CONSTRUCTION	C	859	FY 07
			CONSTRUCTION	DP	859	FY 07
			CONSTRUCTION	HP	2,577	FY 07
NEW HANOVER						
		PLANNING, DESIGN, RIGHT-OF-WAY, AND CONSTRUCTION BY CITY	TOTAL PROJECT COST		4,295	
WILMINGTON	U-5017	WILMINGTON COMPUTERIZED SIGNAL SYSTEM.	CONSTRUCTION	C	4,300	FY 09
			CONSTRUCTION	STP	5,000	FY 10
NEW HANOVER						
			TOTAL PROJECT COST		9,300	
FEASIBILITY STUDIES						
NC 132 NEW HANOVER	FS-0203C	SR 2649 (MLK, JR. PARKWAY) TO SR 1327 (GORDON ROAD). WIDEN TO MULTI-LANES. 2.5 Mile(s)				
		FEASIBILITY STUDY IN PROGRESS				
WILMINGTON NEW HANOVER	FS-0503A	KERR AVENUE TO I-40. CONSTRUCT FREEWAY ON NEW LOCATION.				
		FEASIBILITY STUDY IN PROGRESS				

* INDICATES INTRASTATE PROJECT

GREEN TEXT INDICATES DELIVERABLE STIP PROJECT

COST AND SCHEDULES ARE PRELIMINARY AND SUBJECT TO SIGNIFICANT CHANGE AS MORE INFORMATION BECOMES AVAILABLE

TRANSPORTATION PROGRAM

WILMINGTON URBAN AREA METROPOLITAN PLANNING ORGANIZATION

ROUTE/CITY COUNTY	ID. NO. / BREAK	LOCATION - DESCRIPTION - MILEAGE - BREAK	WORK TYPE	FUNDING SOURCE	COST ESTIMATES (THOU)	SCHEDULE (FISCAL YEARS)
FEDERAL BRIDGE PROJECTS						
US 17-74-76 BRUNSWICK	B-4437	ALLIGATOR CREEK. REPLACE DECKS ON BRIDGE NO. 107 AND BRIDGE NO. 108	CONSTRUCTION	FA	100 1,000	PRIOR YEARS UNFUNDED
					TOTAL PROJECT COST	1,100
US 17-74-76-421 NEW HANOVER	B-4990	CAPE FEAR RIVER. REPLACEMENT OF MOVABLE SPAN ELECTRICAL CONTROL SYSTEM.	CONSTRUCTION		6,169	PRIOR YEARS IN PROGRESS
					TOTAL PROJECT COST	6,169
NC 133 NEW HANOVER	B-3881	CSX TRANSPORTATION. REPLACE BRIDGE NO. 26	RIGHT-OF-WAY CONSTRUCTION	FA	350 2,800	PRIOR YEARS IN PROGRESS FY 08
					TOTAL PROJECT COST	3,150
NC 133 NEW HANOVER	B-4590	SMITH CREEK. REPLACE BRIDGE NO. 29	RIGHT-OF-WAY MITIGATION CONSTRUCTION	FA FA FA	65 300 4 3,000	PRIOR YEARS UNFUNDED UNFUNDED UNFUNDED
					TOTAL PROJECT COST	3,369
SR 1002 NEW HANOVER PENDER	B-4591	ISLAND CREEK. REPLACE BRIDGE NO. 4	RIGHT-OF-WAY MITIGATION CONSTRUCTION	NFA NFA NFA	60 50 7 500	PRIOR YEARS FY 11 FY 11 FY 12
					TOTAL PROJECT COST	617
SR 1432 BRUNSWICK	B-4928	MILL CREEK. REPLACE BRIDGE NO. 28	RIGHT-OF-WAY MITIGATION CONSTRUCTION	NFA NFA NFA	90 1 900	UNFUNDED UNFUNDED UNFUNDED
					TOTAL PROJECT COST	991

* INDICATES INTRASTATE PROJECT
 GREEN TEXT INDICATES DELIVERABLE STIP PROJECT

COST AND SCHEDULES ARE PRELIMINARY AND SUBJECT TO
 SIGNIFICANT CHANGE AS MORE INFORMATION BECOMES AVAILABLE

TRANSPORTATION PROGRAM

WILMINGTON URBAN AREA METROPOLITAN PLANNING ORGANIZATION

ROUTE/CITY COUNTY	ID. NO. / BREAK	LOCATION - DESCRIPTION - MILEAGE - BREAK	WORK TYPE	FUNDING SOURCE	COST ESTIMATES (THOU)	SCHEDULE (FISCAL YEARS)
MITIGATION PROJECTS						
VARIOUS SAMPSON DUPLIN ONslow PENDER BRUNSWICK NEW HANOVER	EE-4903	ECOSYSTEMS ENHANCEMENT PROGRAM FOR DIVISION 3 PROJECTS.	MITIGATION		1,036	PRIOR YEARS IN PROGRESS
TOTAL PROJECT COST					1,036	
ENHANCEMENT (CALL PROJECTS)						
CAROLINA BEACH NEW HANOVER	E-4746	CONSTRUCT AN OFF-ROAD BIKE/MULTI-USE TRAIL CONNECTING CAROLINA BEACH'S INNER CITY BIKEWAY PATH TO DOW ROAD.	CONSTRUCTION		61	PRIOR YEARS IN PROGRESS
TOTAL PROJECT COST					61	
CAROLINA BEACH NEW HANOVER	E-4914	CAROLINA BEACH AVENUE, HARPER AVENUE TO SANDPIPER LANE AND CANAL DRIVE, SEAGULL LANE TO VIRGINIA AVENUE. CONSTRUCT MULTI-USE FACILITY.	CONSTRUCTION CONSTRUCTION	O STP	25 49 196	PRIOR YEARS FY 07 FY 07
TOTAL PROJECT COST					270	
LELAND BRUNSWICK	E-4912	TOWN HALL DRIVE, VILLAGE ROAD TO OLD FAYETTEVILLE ROAD. LANDSCAPE A MULTI-USE PATH.	CONSTRUCTION		41	PRIOR YEARS IN PROGRESS
TOTAL PROJECT COST					41	
WILMINGTON NEW HANOVER	E-4516	US 74 (EASTWOOD ROAD), SR 1409 (MILITARY CUTOFF ROAD) TO CARDINAL LANE. CONSTRUCT MULTI-USE TRAIL.	CONSTRUCTION		435	PRIOR YEARS IN PROGRESS
TOTAL PROJECT COST					435	
WILMINGTON NEW HANOVER	E-4749	CONSTRUCT A BIKE PATH CONNECTING THE RIVER TO SEA BIKEWAY TO THE EASTWOOD ROAD PATH.	CONSTRUCTION		185	PRIOR YEARS IN PROGRESS
TOTAL PROJECT COST					185	
WRIGHTSVILLE BEACH NEW HANOVER	E-4745	CONSTRUCT A PUBLIC RESTROOM IN THE FORM OF A REPLICA OF A STATIONONE TROLLY STOP AND LANDSCAPE AREA.	CONSTRUCTION		66	PRIOR YEARS IN PROGRESS
TOTAL PROJECT COST					66	

* INDICATES INTRASTATE PROJECT

GREEN TEXT INDICATES DELIVERABLE STIP PROJECT

COST AND SCHEDULES ARE PRELIMINARY AND SUBJECT TO SIGNIFICANT CHANGE AS MORE INFORMATION BECOMES AVAILABLE

TRANSPORTATION PROGRAM

WILMINGTON URBAN AREA METROPOLITAN PLANNING ORGANIZATION

ROUTE/CITY COUNTY	ID. NO. / BREAK	LOCATION - DESCRIPTION - MILEAGE - BREAK	WORK TYPE	FUNDING SOURCE	COST ESTIMATES (THOU)	SCHEDULE (FISCAL YEARS)
FERRY PROJECTS						
NC 211 US 421 BRUNSWICK NEW HANOVER	F-5002	SOUTHPORT RAMP-GANTRY-DOLPHIN. REPAIR AND REPLACE.	CONSTRUCTION	SF	1,250	FY 09
TOTAL PROJECT COST					1,250	
HAZARD ELIMINATION PROJECTS						
I-40 NEW HANOVER	W-4803	PENDER COUNTY LINE TO NC 132 (MILE POST 420). INSTALL MILLED RUMBLE STRIPS ON THE MEDIAN AND OUTSIDE SHOULDERS IN BOTH DIRECTIONS. 6.4 Mile(s)	CONSTRUCTION	HES	105	FY 07
TOTAL PROJECT COST					105	
SR 1219 17TH STREET NEW HANOVER	W-4702	SAVANNAH COURT TO SR 1101 (SHIPYARD BOULEVARD). SAFETY IMPROVEMENTS.	CONSTRUCTION	HES	1,600	FY 09
TOTAL PROJECT COST					1,600	

PUBLIC TRANSPORTATION PROGRAM

WILMINGTON URBAN AREA METROPOLITAN PLANNING ORGANIZATION

ROUTE/CITY COUNTY	ID. NO. / BREAK	LOCATION - DESCRIPTION - MILEAGE - BREAK	WORK TYPE	FUNDING SOURCE	COST ESTIMATES (THOU)	SCHEDULE (FISCAL YEARS)
PUBLIC TRANSPORTATION PROJECTS						
NEW HANOVER COUNTY NEW HANOVER	TJ-4964	PROVIDE OPERATING ASSISTANCE TO COUNTIES AND COMMUNITY TRANSPORTATION SYSTEMS TO MEET WORK FIRST AND EMPLOYMENT TRANSPORTATION NEEDS.	OPERATIONS	OAWF	28	FY 07 08
TOTAL PROJECT COST					28	
NEW HANOVER COUNTY NEW HANOVER	TL-4964	PROVIDE OPERATING ASSISTANCE FOR ADDITIONAL TRANSPORTATION SERVICES TO THE ELDERLY AND DISABLED.	OPERATIONS	EDTAP	162	FY 07 08
TOTAL PROJECT COST					162	
NEW HANOVER COUNTY NEW HANOVER	TR-4964	PROVIDE MAINTENANCE ASSISTANCE FOR COMMUNITY TRANSPORTATION SYSTEMS TO SERVE THE RURAL GENERAL PUBLIC.	OPERATIONS	RGP	110	FY 07 08
TOTAL PROJECT COST					110	

* INDICATES INTRASTATE PROJECT

GREEN TEXT INDICATES DELIVERABLE STIP PROJECT

PUBLIC TRANSPORTATION PROGRAM

WILMINGTON URBAN AREA METROPOLITAN PLANNING ORGANIZATION

ROUTE/CITY COUNTY	ID. NO. / BREAK	LOCATION - DESCRIPTION - MILEAGE - BREAK	WORK TYPE	FUNDING SOURCE	COST ESTIMATES (THOU)	SCHEDULE (FISCAL YEARS)
PUBLIC TRANSPORTATION PROJECTS						
CAPE FEAR PUBLIC TRANSPORTATION	TA-4906	4 - EXPANSION BUSES	CAPITAL	FED	1,000	FY 07
			CAPITAL	L	125	FY 07
			CAPITAL	STAT	125	FY 07
NEW HANOVER						
<i>UNFUNDED PROJECT</i>			TOTAL PROJECT COST		1,250	
CAPE FEAR PUBLIC TRANSPORTATION	TA-4907	2 - REPLACEMENT BUSES	CAPITAL	FED	520	FY 09
			CAPITAL	L	65	FY 09
			CAPITAL	STAT	65	FY 09
NEW HANOVER						
<i>UNFUNDED PROJECT</i>			TOTAL PROJECT COST		650	
CAPE FEAR PUBLIC TRANSPORTATION	TA-4952	2 - EXPANSION BUSES	CAPITAL	FED	120	FY 08
			CAPITAL	L	15	FY 08
			CAPITAL	STAT	15	FY 08
NEW HANOVER						
<i>UNFUNDED PROJECT</i>			TOTAL PROJECT COST		150	
CAPE FEAR PUBLIC TRANSPORTATION	TA-4953	1 - EXPANSION TROLLEY BUS	CAPITAL	FED	220	FY 07
			CAPITAL	L	28	FY 07
			CAPITAL	STAT	28	FY 07
NEW HANOVER						
<i>UNFUNDED PROJECT</i>			TOTAL PROJECT COST		276	
CAPE FEAR PUBLIC TRANSPORTATION	TA-4954	3 - REPLACEMENT CUTAWAY BUSES	CAPITAL	FED	192	FY 08
			CAPITAL	L	24	FY 08
			CAPITAL	STAT	24	FY 08
NEW HANOVER						
<i>UNFUNDED PROJECT</i>			TOTAL PROJECT COST		240	
CAPE FEAR PUBLIC TRANSPORTATION	TA-4956	16 - REPLACEMENT BUSES	CAPITAL	FED	4,480	FY 13
			CAPITAL	L	560	FY 13
			CAPITAL	STAT	560	FY 13
NEW HANOVER						
<i>UNFUNDED PROJECT</i>			TOTAL PROJECT COST		5,600	
CAPE FEAR PUBLIC TRANSPORTATION	TD-4721B	MULTI-MODAL TRANSPORTATION CENTER--DESIGN, LAND ACQUISITION, CONSTRUCTION	CAPITAL	FED	8,000	FY 07
			CAPITAL	L	1,000	FY 07
			CAPITAL	STAT	1,000	FY 07
NEW HANOVER						
<i>UNFUNDED PROJECT</i>			TOTAL PROJECT COST		10,000	

* INDICATES INTRASTATE PROJECT
 GREEN TEXT INDICATES DELIVERABLE STIP PROJECT

PUBLIC TRANSPORTATION PROGRAM

WILMINGTON URBAN AREA METROPOLITAN PLANNING ORGANIZATION

ROUTE/CITY COUNTY	ID. NO. / BREAK	LOCATION - DESCRIPTION - MILEAGE - BREAK	WORK TYPE	FUNDING SOURCE	COST		SCHEDULE (FISCAL YEARS)
					ESTIMATES (THOU)		
PUBLIC TRANSPORTATION PROJECTS							
CAPE FEAR PUBLIC TRANSPORTATION AUTHORITY NEW HANOVER	TD-4917	TRANSFER / MAINTENANCE FACILITIES	CAPITAL	FED	6,200		FY 08
			CAPITAL	L	775		FY 08
			CAPITAL	STAT	775		FY 08
<i>UNFUNDED PROJECT</i>			TOTAL PROJECT COST		7,750		
CAPE FEAR PUBLIC TRANSPORTATION NEW HANOVER	TG-4796	ROUTINE CAPITAL ITEMS--OFFICE EQUIPMENT, COMPUTER HARDWARE AND SOFTWARE	CAPITAL	FUZ	32		FY 07
			CAPITAL	L	8		FY 07
			TOTAL PROJECT COST		40		
CAPE FEAR PUBLIC TRANSPORTATION NEW HANOVER	TG-4797	ROUTINE CAPITAL ITEMS--MAINTENANCE EQUIPMENT, COMPUTER HARDWARE AND SOFTWARE	CAPITAL	FUZ	32		FY 08
			CAPITAL	L	8		FY 08
			TOTAL PROJECT COST		40		
CAPE FEAR PUBLIC TRANSPORTATION NEW HANOVER	TG-4798	ROUTINE CAPITAL ITEMS--SERVICE VEHICLE, SECURITY EQUIPMENT AND ENHANCEMENTS	CAPITAL	FUZ	32		FY 09
			CAPITAL	L	8		FY 09
			TOTAL PROJECT COST		40		
CAPE FEAR PUBLIC TRANSPORTATION NEW HANOVER	TG-4799	ROUTINE CAPITAL ITEM AND TECHNOLOGY UPGRADES	CAPITAL	FUZ	32		FY 10
			CAPITAL	L	8		FY 10
			TOTAL PROJECT COST		40		
CAPE FEAR PUBLIC TRANSPORTATION NEW HANOVER	TG-4905	ROUTINE CAPITAL ITEM -- BUS SHELTERS, FARE BOX EQUIPMENT	CAPITAL	FUZ	32		FY 11
			CAPITAL	L	8		FY 11
			TOTAL PROJECT COST		40		
CAPE FEAR PUBLIC TRANSPORTATION NEW HANOVER	TG-4906	ROUTINE CAPITAL ITEM -- SERVICE VEHICLE, SECURITY EQUIPMENT AND ENHANCEMENT	CAPITAL	FUZ	32		FY 12
			CAPITAL	L	8		FY 12
			TOTAL PROJECT COST		40		
CAPE FEAR PUBLIC TRANSPORTATION NEW HANOVER	TG-4943	ROUTINE CAPITAL ITEMS - SERVICE VEHICLE, SECURITY EQUIPMENT AND ENHANCEMENTS	CAPITAL	FUZ	32		FY 13
			CAPITAL	L	8		FY 13
			TOTAL PROJECT COST		40		

* INDICATES INTRASTATE PROJECT

GREEN TEXT INDICATES DELIVERABLE STIP PROJECT

COST AND SCHEDULES ARE PRELIMINARY AND SUBJECT TO SIGNIFICANT CHANGE AS MORE INFORMATION BECOMES AVAILABLE

PUBLIC TRANSPORTATION PROGRAM

WILMINGTON URBAN AREA METROPOLITAN PLANNING ORGANIZATION

ROUTE/CITY COUNTY	ID. NO. / BREAK	LOCATION - DESCRIPTION - MILEAGE - BREAK	WORK TYPE	FUNDING SOURCE	COST		SCHEDULE (FISCAL YEARS)
					ESTIMATES (THOU)		
PUBLIC TRANSPORTATION PROJECTS							
CAPE FEAR PUBLIC TRANSPORTATION	TO-4750	FEDERAL OPERATING ASSISTANCE AND STATE MAINTENANCE	OPERATIONS	FUZ	1,500	FY 07	
			OPERATIONS	L	1,623	FY 07	
			OPERATIONS	SMAP	1,180	FY 07	
NEW HANOVER			TOTAL PROJECT COST		4,303		
CAPE FEAR PUBLIC TRANSPORTATION	TO-4751	FEDERAL OPERATING ASSISTANCE AND STATE MAINTENANCE	OPERATIONS	FUZ	1,500	FY 08	
			OPERATIONS	L	1,623	FY 08	
			OPERATIONS	SMAP	1,180	FY 08	
NEW HANOVER			TOTAL PROJECT COST		4,303		
CAPE FEAR PUBLIC TRANSPORTATION	TO-4752	FEDERAL OPERATING ASSISTANCE AND STATE MAINTENANCE	OPERATIONS	FUZ	1,500	FY 09	
			OPERATIONS	L	1,623	FY 09	
			OPERATIONS	SMAP	1,180	FY 09	
NEW HANOVER			TOTAL PROJECT COST		4,303		
CAPE FEAR PUBLIC TRANSPORTATION	TO-4753	FEDERAL OPERATING ASSISTANCE AND STATE MAINTENANCE	OPERATIONS	FUZ	1,500	FY 10	
			OPERATIONS	L	1,623	FY 10	
			OPERATIONS	SMAP	1,180	FY 10	
NEW HANOVER			TOTAL PROJECT COST		4,303		
CAPE FEAR PUBLIC TRANSPORTATION	TO-4905	FEDERAL OPERATING ASSISTANCE AND STATE MAINTENANCE	OPERATIONS	FUZ	1,500	FY 11	
			OPERATIONS	L	1,623	FY 11	
			OPERATIONS	SMAP	1,180	FY 11	
NEW HANOVER			TOTAL PROJECT COST		4,303		
CAPE FEAR PUBLIC TRANSPORTATION	TO-4906	FEDERAL OPERATING ASSISTANCE AND STATE MAINTENANCE	OPERATIONS	FUZ	1,500	FY 12	
			OPERATIONS	L	1,623	FY 12	
			OPERATIONS	SMAP	1,180	FY 12	
NEW HANOVER			TOTAL PROJECT COST		4,303		
CAPE FEAR PUBLIC TRANSPORTATION	TO-4941	FEDERAL OPERATING ASSISTANCE AND STATE MAINTENANCE	OPERATIONS	FUZ	1,500	FY 13	
			OPERATIONS	L	1,623	FY 13	
			OPERATIONS	SMAP	1,180	FY 13	
NEW HANOVER			TOTAL PROJECT COST		4,303		

* INDICATES INTRASTATE PROJECT
 GREEN TEXT INDICATES DELIVERABLE STIP PROJECT

PUBLIC TRANSPORTATION PROGRAM

WILMINGTON URBAN AREA METROPOLITAN PLANNING ORGANIZATION

ROUTE/CITY COUNTY	ID. NO. / BREAK	LOCATION - DESCRIPTION - MILEAGE - BREAK	WORK TYPE	FUNDING SOURCE	COST		SCHEDULE (FISCAL YEARS)
					ESTIMATES (THOU)		
PUBLIC TRANSPORTATION PROJECTS							
WILMINGTON	TD-4721C	INTERMODAL TRANSPORTATION CENTER (SAFETEA-LU EARMARK)	CAPITAL	FBUS	644		FY 07 08 09
			CAPITAL	L	80		FY 07 08 09
			CAPITAL	STAT	80		FY 07 08 09
NEW HANOVER							
TOTAL PROJECT COST					804		

* INDICATES INTRASTATE PROJECT
GREEN TEXT INDICATES DELIVERABLE STIP PROJECT

COST AND SCHEDULES ARE PRELIMINARY AND SUBJECT TO
SIGNIFICANT CHANGE AS MORE INFORMATION BECOMES AVAILABLE

TRANSPORTATION PROGRAM

STATEWIDE

ROUTE/CITY	ID. NO. / BREAK	LOCATION - DESCRIPTION - MILEAGE - BREAK	WORK TYPE	FUNDING SOURCE	COST ESTIMATES (THOU)	SCHEDULE (FISCAL YEARS)
INTERSTATE PROJECTS						
VARIOUS	I-4922	STATEWIDE WEIGH STATION PROGRAM.	CONSTRUCTION	IM	9,144	FY 08 09 10
					TOTAL PROJECT COST	9,144
VARIOUS	I-9998	INTERSTATE PREVENTATIVE MAINTENANCE.	CONSTRUCTION	IM	100,000	FY 10 11 12 13
					TOTAL PROJECT COST	100,000
RURAL PROJECTS						
	M-0359	PROGRAM DEVELOPMENT AND ENVIRONMENTAL ANALYSIS BRANCH. DEVELOP A PROCEDURES MANNUAL.			300	PRIOR YEARS
					TOTAL PROJECT COST	300
VARIOUS	M-0281	CENTER FOR TRANSPORTATION AND THE ENVIRONMENT			1,500	PRIOR YEARS
					TOTAL PROJECT COST	1,500
VARIOUS	M-0360	DESIGN SERVICES, PRELIMINARY ENGINEERING FOR MISCELLANEOUS PROJECTS.	ENGINEERING	S	3,000 7,000	PRIOR YEARS FY 07 08 09 10 11 12 13
<i>IN PROGRESS</i>					TOTAL PROJECT COST	10,000
VARIOUS	M-0376	STATEWIDE GEOTECHNICAL STUDIES AND INVESTIGATIONS PROJECT TO COVER NON-PROJECT SPECIFIC WORK.	ENGINEERING	S	2,500 8,750	PRIOR YEARS FY 07 08 09 10 11 12 13
<i>IN PROGRESS</i>					TOTAL PROJECT COST	11,250
VARIOUS	M-0377	ENVIRONMENTAL STREAMLINING. COORDINATE, PLAN, FACILITATE, IMPLEMENT AND TRACK INITATIVES.	ENGINEERING	S	2,000 1,000	PRIOR YEARS FY 07
<i>IN PROGRESS</i>					TOTAL PROJECT COST	3,000
VARIOUS	M-0386	STATEWIDE TRANSPORTATION MANAGEMENT CENTER.	<i>SCHEDULED FOR FEASIBILITY STUDY ONLY</i>			
VARIOUS	M-0391	STRUCTURE DESIGN, PRELIMINARY ENGINEERING FOR MISCELLANEOUS PROJECTS	ENGINEERING	S	300 2,100	PRIOR YEARS FY 07 08 09 10 11 12 13
<i>IN PROGRESS</i>					TOTAL PROJECT COST	2,400
VARIOUS	M-0392	HYDRAULICS, PRELIMINARY ENGINEERING FOR MISCELLANEOUS PROJECTS.	ENGINEERING	S	300 2,100	PRIOR YEARS FY 07 08 09 10 11 12 13
<i>IN PROGRESS</i>					TOTAL PROJECT COST	2,400

* INDICATES INTRASTATE PROJECT
 GREEN TEXT INDICATES DELIVERABLE STIP PROJECT

COST AND SCHEDULES ARE PRELIMINARY AND SUBJECT TO
 SIGNIFICANT CHANGE AS MORE INFORMATION BECOMES AVAILABLE

TRANSPORTATION PROGRAM

STATEWIDE

ROUTE/CITY	ID. NO. / BREAK	LOCATION - DESCRIPTION - MILEAGE - BREAK	WORK TYPE	FUNDING SOURCE	COST ESTIMATES (THOU)	SCHEDULE (FISCAL YEARS)
RURAL PROJECTS						
VARIOUS	R-2929	NATIONAL PARKS SERVICE SPOT SAFETY AND SIGN REHABILITATION.	CONSTRUCTION	FLP	900 700	PRIOR YEARS FY 07 08 09 10 11 12 13
<i>UNDER CONSTRUCTION BY FEDERAL HIGHWAY ADMINISTRATION</i>			TOTAL PROJECT COST		1,600	
VARIOUS	R-2930	NATIONAL PARKS SERVICE EMERGENCY PAVEMENT REHABILITATION.	CONSTRUCTION	FLP	630 490	PRIOR YEARS FY 07 08 09 10 11 12 13
<i>UNDER CONSTRUCTION BY FEDERAL HIGHWAY ADMINISTRATION</i>			TOTAL PROJECT COST		1,120	
VARIOUS	R-4049	TRAFFIC OPERATIONS (INCIDENT MANAGEMENT, 511, SMARTLINK, TEC, TMC)	CONSTRUCTION	IM	64,300 94,500	PRIOR YEARS FY 07 08 09 10 11 12 13
			CONSTRUCTION	NHS	31,500	FY 07 08 09 10 11 12 13
			TOTAL PROJECT COST		190,300	
VARIOUS	R-4066	WETLAND RESTORATION PROGRAM. COMPLETION OF WATERSHED ASSESSMENT PLANS IN ALL SEVENTEEN (17) RIVER BASINS TO IDENTIFY WETLAND AND STREAM RESTORATION PROJECTS FOR MITIGATION.			17,500	PRIOR YEARS
<i>IN PROGRESS</i>			TOTAL PROJECT COST		17,500	
VARIOUS	R-4067	POSITIVE GUIDANCE PROGRAM (PAVEMENT MARKINGS AND MARKERS, LED SIGNAL HEAD REPLACEMENT)	CONSTRUCTION	STP	40,027 46,200	PRIOR YEARS FY 07 08 09 10 11 12 13
<i>IN PROGRESS</i>			TOTAL PROJECT COST		86,227	
VARIOUS	R-4073	ASPHALT MATERIALS TESTING LABORATORIES CORRECTIVE ACTION PLAN FOR GROUNDWATER CLEAN-UP AT 54 SITES.	CONSTRUCTION	STP	6,458 6,300	PRIOR YEARS FY 07 08 09 10 11 12 13
			TOTAL PROJECT COST		12,758	
VARIOUS	R-4436	NPDES PERMITS, RETROFIT FOURTEEN SITES PER YEAR TO PROTECT WATER QUALITY.	CONSTRUCTION	STP	5,267 23,300	PRIOR YEARS FY 07 08 09 10 11 12 13
			TOTAL PROJECT COST		28,567	
VARIOUS	R-4454	IMPROVEMENT PROJECTS THAT FURTHER ECONOMIC GROWTH AND DEVELOPMENT IN SMALL URBAN AND RURAL AREAS.			47,000	PRIOR YEARS
			TOTAL PROJECT COST		47,000	
VARIOUS	R-4500	ECONOMIC DEVELOPMENT.	CONSTRUCTION	S	20,055 33,015	PRIOR YEARS FY 07 08 10 11 12 13
			TOTAL PROJECT COST		53,070	

* INDICATES INTRASTATE PROJECT
 GREEN TEXT INDICATES DELIVERABLE STIP PROJECT

COST AND SCHEDULES ARE PRELIMINARY AND SUBJECT TO
 SIGNIFICANT CHANGE AS MORE INFORMATION BECOMES AVAILABLE

TRANSPORTATION PROGRAM

STATEWIDE

ROUTE/CITY	ID. NO. / BREAK	LOCATION - DESCRIPTION - MILEAGE - BREAK	WORK TYPE	FUNDING SOURCE	COST ESTIMATES (THOU)	SCHEDULE (FISCAL YEARS)
RURAL PROJECTS						
VARIOUS	R-4701	TRAFFIC SYSTEM OPERATIONS PROGRAM (SIGNAL MAINTENANCE).			48,000	PRIOR YEARS
			CONSTRUCTION	STP	126,000	FY 07 08 09 10 11 12 13
			TOTAL PROJECT COST		174,000	
VARIOUS	R-4950	STATEWIDE ENVIRONMENTAL MITIGATION AND MINIMIZATION (STATE CONSTRUCTION).			88,130	PRIOR YEARS
	A	ON-SITE MITIGATION.	ACQUISITION	S	2,100	FY 07 08 09 10 11 12 13
	B	ECOSYSTEMS ENHANCEMENT PROGRAM (EEP) HOLDOUT.	MITIGATION	S	6,647	FY 07 08 09 10 11 12 13
		<i>IN PROGRESS</i>	TOTAL PROJECT COST		96,877	
VARIOUS	R-4951	STATEWIDE ENVIRONMENTAL MITIGATION AND MINIMIZATION (INTRASTATE).			2,000	PRIOR YEARS
	A	ON-SITE MITIGATION.	ACQUISITION	T	42,000	FY 07 08 09 10 11 12 13
	B	ECOSYSTEMS ENHANCEMENT PROGRAM (EEP) HOLDOUT.	MITIGATION	T	132,936	FY 07 08 09 10 11 12 13
		<i>IN PROGRESS</i>	TOTAL PROJECT COST		176,936	
VARIOUS	R-4952	STATEWIDE ENVIRONMENTAL MITIGATION AND MINIMIZATION (URBAN LOOP).			600	PRIOR YEARS
	A	ON-SITE MITIGATION.	ACQUISITION	T	12,600	FY 07 08 09 10 11 12 13
	B	ECOSYSTEMS ENHANCEMENT PROGRAM (EEP) HOLDOUT.	MITIGATION	T	39,880	FY 07 08 09 10 11 12 13
		<i>IN PROGRESS</i>	TOTAL PROJECT COST		53,080	
VARIOUS	R-4953	STATEWIDE ENVIRONMENTAL MITIGATION AND MINIMIZATION (NATIONAL HIGHWAY SYSTEM).			750	PRIOR YEARS
	A	ON-SITE MITIGATION.	ACQUISITION	NHS	15,750	FY 07 08 09 10 11 12 13
	B	ECOSYSTEMS ENHANCEMENT PROGRAM (EEP) HOLDOUT.	MITIGATION	NHS	49,851	FY 07 08 09 10 11 12 13
		<i>IN PROGRESS</i>	TOTAL PROJECT COST		66,351	
VARIOUS	R-4954	STATEWIDE ENVIRONMENTAL MITIGATION AND MINIMIZATION (SURFACE TRANSPORTATION PROGRAM).			1,500	PRIOR YEARS
	A	ON-SITE MITIGATION.	ACQUISITION	STP	31,500	FY 07 08 09 10 11 12 13
	B	ECOSYSTEMS ENHANCEMENT PROGRAM (EEP) HOLDOUT.	MITIGATION	STP	99,702	FY 07 08 09 10 11 12 13
		<i>IN PROGRESS</i>	TOTAL PROJECT COST		132,702	

* INDICATES INTRASTATE PROJECT
 GREEN TEXT INDICATES DELIVERABLE STIP PROJECT

TRANSPORTATION PROGRAM

STATEWIDE

ROUTE/CITY	ID. NO. / BREAK	LOCATION - DESCRIPTION - MILEAGE - BREAK	WORK TYPE	FUNDING SOURCE	COST ESTIMATES (THOU)	SCHEDULE (FISCAL YEARS)
RURAL PROJECTS						
VARIOUS	R-4955	STATEWIDE ENVIRONMENTAL MITIGATION AND MINIMIZATION (INTERSTATE MAINTENANCE).			25	PRIOR YEARS
	A	ON-SITE MITIGATION.	ACQUISITION	IM	525	FY 07 08 09 10 11 12 13
	B	ECOSYSTEMS ENHANCEMENT PROGRAM (EEP) HOLDOUT.	MITIGATION	IM	1,661	FY 07 08 09 10 11 12 13
		IN PROGRESS	TOTAL PROJECT COST		2,211	
VARIOUS	R-4956	STATEWIDE ENVIRONMENTAL MITIGATION AND MINIMIZATION (BRIDGE PROGRAM).			16	PRIOR YEARS
	A	ON-SITE MITIGATION.	ACQUISITION	FA	175	FY 07 08 09 10 11 12 13
			ACQUISITION	NFA	175	FY 07 08 09 10 11 12 13
	B	ECOSYSTEMS ENHANCEMENT PROGRAM (EEP) HOLDOUT.	MITIGATION	FA	499	FY 07 08 09 10 11 12 13
			MITIGATION	NFA	499	FY 07 08 09 10 11 12 13
		IN PROGRESS	TOTAL PROJECT COST		1,364	
VARIOUS	R-4957	STATEWIDE ENVIRONMENTAL MITIGATION AND MINIMIZATION (HIGH PRIORITY).			5	PRIOR YEARS
	A	ON-SITE MITIGATION.	ACQUISITION	HP	105	FY 07 08 09 10 11 12 13
	B	ECOSYSTEMS ENHANCEMENT PROGRAM (EEP) HOLDOUT.	MITIGATION	HP	331	FY 07 08 09 10 11 12 13
		IN PROGRESS	TOTAL PROJECT COST		441	
VARIOUS	R-4958	STATEWIDE ENVIRONMENTAL MITIGATION AND MINIMIZATION (APPALACHIAN DEVELOPMENT).			5	PRIOR YEARS
	A	ON-SITE MITIGATION.	ACQUISITION	APD	105	FY 07 08 09 10 11 12 13
	B	ECOSYSTEMS ENHANCEMENT PROGRAM (EEP) HOLDOUT.	MITIGATION	APD	331	FY 07 08 09 10 11 12 13
		IN PROGRESS	TOTAL PROJECT COST		441	
VARIOUS	R-8888	STATEWIDE PLANNING FOR TRAFFIC FORCASTING, PRE-TIP PLANNING AND PURPOSE AND NEED STUDIES.			2,632	PRIOR YEARS
			STUDY	S	3,500	FY 07 08 09 10 11 12 13
			TOTAL PROJECT COST		6,132	
URBAN PROJECTS						
VARIOUS	U-4500	ECONOMIC DEVELOPMENT.			20,175	PRIOR YEARS
			CONSTRUCTION	S	31,405	FY 10 11 12 13
			TOTAL PROJECT COST		51,580	

* INDICATES INTRASTATE PROJECT
 GREEN TEXT INDICATES DELIVERABLE STIP PROJECT

TRANSPORTATION PROGRAM

STATEWIDE

ROUTE/CITY	ID. NO. / BREAK	LOCATION - DESCRIPTION - MILEAGE - BREAK	WORK TYPE	FUNDING SOURCE	COST ESTIMATES (THOU)	SCHEDULE (FISCAL YEARS)
FEDERAL BRIDGE PROJECTS						
VARIOUS	B-4693	STATEWIDE SURVEY OF HISTORICAL BRIDGES.			1,000	PRIOR YEARS
			TOTAL PROJECT COST		1,000	
VARIOUS	B-4700	FEDERAL-AID ON SYSTEM (FA) ROUTES. ADDRESS PREVENTATIVE MAINTENANCE AND SAFETY ISSUES AT SELECTED BRIDGE SITES.	CONSTRUCTION	FA	6,000 14,000	PRIOR YEARS FY 07 08 09 10 11 12 13
			TOTAL PROJECT COST		20,000	
VARIOUS	B-9999	BRIDGE INSPECTION PROGRAM.	INSPECTION	BRGI	90,300 35,000	PRIOR YEARS FY 07 08 09 10 11 12 13
			TOTAL PROJECT COST		125,300	
VARIOUS	M-0379	SCOUR EVALUATION PROGRAM OF EXISTING BRIDGES.			1,000	PRIOR YEARS
			TOTAL PROJECT COST		1,000	
BICYCLE AND PEDESTRIAN PROJECTS						
REGIONAL	EB-4410	AREA-WIDE BICYCLE IMPROVEMENTS FEASIBILITY STUDIES.	STUDY	STP	200 350	PRIOR YEARS FY 07 08 09 10 11 12 13
			TOTAL PROJECT COST		550	
VARIOUS	EB-2956	STATEWIDE BICYCLE PROGRAM.	CONSTRUCTION	STP	15,417 7,476	PRIOR YEARS FY 07 08 09 10 11 12 13
			TOTAL PROJECT COST		22,893	
VARIOUS	EB-2966	SAFETY-EDUCATION PROJECTS.	BOOKLETS	STP	370 275	PRIOR YEARS FY 07 08 09 10 11 12 13
			TOTAL PROJECT COST		645	
VARIOUS	EB-3119	LOCAL BICYCLE MAPS: UPDATE, REVISE AND REPRINT.	MAPPING	STP	254 175	PRIOR YEARS FY 07 08 09 10 11 12 13
			TOTAL PROJECT COST		429	
VARIOUS	EB-3120	NORTH CAROLINA BICYCLING HIGHWAYS MAPS: UPDATE AND REPRINT.	MAPPING	STP	281 175	PRIOR YEARS FY 07 08 09 10 11 12 13
			TOTAL PROJECT COST		456	

* INDICATES INTRASTATE PROJECT
 GREEN TEXT INDICATES DELIVERABLE STIP PROJECT

COST AND SCHEDULES ARE PRELIMINARY AND SUBJECT TO
 SIGNIFICANT CHANGE AS MORE INFORMATION BECOMES AVAILABLE

TRANSPORTATION PROGRAM

STATEWIDE

ROUTE/CITY	ID. NO. / BREAK	LOCATION - DESCRIPTION - MILEAGE - BREAK	WORK TYPE	FUNDING SOURCE	COST ESTIMATES (THOU)	SCHEDULE (FISCAL YEARS)
BICYCLE AND PEDESTRIAN PROJECTS						
VARIOUS	EB-3314	STATEWIDE PEDESTRIAN FACILITIES PROGRAM.			3,750	PRIOR YEARS
			CONSTRUCTION	STP	3,500	FY 07 08 09 10 11 12 13
			TOTAL PROJECT COST		7,250	
VARIOUS	EB-4012	NORTH CAROLINA BICYCLING HIGHWAYS NO. 10 (SANDHILLS SECTOR): MAPPING AND SIGNING.			25	PRIOR YEARS
			TOTAL PROJECT COST		25	
VARIOUS	EB-4013	SPOT IMPROVEMENTS: SHORT PAVEMENT SECTIONS, BICYCLE RACKS AND SIGNING NEEDS.			3,200	PRIOR YEARS
			CONSTRUCTION	STP	3,500	FY 07 08 09 10 11 12 13
			TOTAL PROJECT COST		6,700	
VARIOUS	EB-4409	MAP AND SIGN: URBAN, COUNTY AND REGIONAL BIKE ROUTES. IN CALDWELL, CARTERET (MOREHEAD CITY), CATAWBA, DUPLIN, COLUMBUS (WHITEVILLE), DUPLIN, GOLDSBORO MPO, HALIFAX, IREDELL, MADISON, MONTGOMERY, PAMLICO, POLK, ROCKINGHAM, SCOTLAND, TYRELL AND WILKES C			825	PRIOR YEARS
			CONSTRUCTION	STP	1,400	FY 07 08 09 10 11 12 13
			TOTAL PROJECT COST		2,225	
VARIOUS	EB-4411	ROADWAY IMPROVEMENTS FOR BICYCLE SAFETY ON STATE AND LOCAL DESIGNATED BIKE ROUTES.			3,250	PRIOR YEARS
			CONSTRUCTION	STP	15,750	FY 07 08 09 10 11 12 13
			TOTAL PROJECT COST		19,000	
CONGESTION MITIGATION PROJECTS						
NC RAILROAD	C-4901	RAIL DIVISION, CONSTRUCT A SECOND MAIN LINE BETWEEN THOMASVILLE AND LEXINGTON IN DAVIDSON COUNTY.	CONSTRUCTION	CMAQ	3,500	FY 10 11
			CONSTRUCTION	L	6,000	FY 10 11
			TOTAL PROJECT COST		9,500	
NORTH CAROLINA DIVISION OF AIR QUALITY	C-4903	SECTION A; DIVISION OF AIR QUALITY (DAQ) MATCH FUNDS FOR FISCAL YEARS 2006, 07 AND 08. SECTION B: CMAQ FUNDS FOR FISCAL YEARS 2009, 10, 11 AND 12. NORTH CAROLINA AIR AWARENESS OUTREACH PROGRAM TO PROVIDE EDUCATION AND PRODUCE DAILY AIR QUALITY FORECAST.	IMPLEMENTATION	CMAQ	3,000	FY 09 10 11 12 13 PY
			IMPLEMENTATION	O	750	FY 09 10 11 12 13 PY
		IN PROGRESS	TOTAL PROJECT COST		3,750	
VARIOUS	C-3600	DEPARTMENT OF MOTOR VEHICLES (DMV), VEHICLE EMISSION COMPLIANCE SYSTEM. UPGRADE NORTH CAROLINA'S MOTOR VEHICLE EMISSIONS INSPECTION AND MAINTENANCE (I/M) PROGRAM.			6,702	PRIOR YEARS
			TOTAL PROJECT COST		6,702	
VARIOUS	C-4000	DENR OZONE AWARENESS PROGRAM.			1,875	PRIOR YEARS
			TOTAL PROJECT COST		1,875	

* INDICATES INTRASTATE PROJECT
 GREEN TEXT INDICATES DELIVERABLE STIP PROJECT

COST AND SCHEDULES ARE PRELIMINARY AND SUBJECT TO
 SIGNIFICANT CHANGE AS MORE INFORMATION BECOMES AVAILABLE

TRANSPORTATION PROGRAM

STATEWIDE

ROUTE/CITY	ID. NO. / BREAK	LOCATION - DESCRIPTION - MILEAGE - BREAK	WORK TYPE	FUNDING SOURCE	COST ESTIMATES (THOU)	SCHEDULE (FISCAL YEARS)
ENHANCEMENT (CALL PROJECTS)						
VARIOUS	E-3821	PRESERVE HISTORIC BRIDGES FROM DEMOLITION.			250	PRIOR YEARS
					TOTAL PROJECT COST	250
VARIOUS	E-4018	NATIONAL RECREATIONAL TRAILS.	CONSTRUCTION	NRT	5,970	PRIOR YEARS
					8,400	FY 07 08 09 10 11 12 13
					TOTAL PROJECT COST	14,370
VARIOUS	E-4599	INSTALL RIVER BASIN HIGHWAY SIGNS.			187	PRIOR YEARS
					TOTAL PROJECT COST	187
VARIOUS	E-4602	GIS ARCHAEOLOGICAL DATABASE. STATEWIDE DATABASE TO CALCULATE ARCHAEOLOGICAL SITES LOCATED WITHIN OR NEAR NCDOT PROJECTS.			750	PRIOR YEARS
					TOTAL PROJECT COST	750
VARIOUS	E-4603	ECOSYSTEMS ENHANCEMENT PROGRAM. STRUCTURED MITIGATION FOR PROTECTION, ENHANCEMENT AND RESTORATION OF ECOLOGICAL FUNCTIONS AS COMPENSATION FOR PROJECT IMPACTS AT THE WATERSHED LEVEL.			625	PRIOR YEARS
					TOTAL PROJECT COST	625
<i>SCHEDULED FOR PLANNING AND PROGRAM DEVELOPMENT ONLY</i>						
VARIOUS	E-9999	ENHANCEMENT BALANCE.	CONSTRUCTION	STP	30,000	FY 08 10 12
					TOTAL PROJECT COST	30,000
ENHANCEMENT (ROADSIDE PROJECTS)						
BLUE RIDGE PARKWAY	ER-3817	SCENIC ENHANCEMENT AND VIEWSHED PROTECTION.	101.4 Mile(s)		2,200	PRIOR YEARS
<i>IN ACQUISITION</i>					TOTAL PROJECT COST	2,200
BLUE RIDGE PARKWAY	S-4006	CONSERVATION EASEMENTS.			15	PRIOR YEARS
					TOTAL PROJECT COST	15
VARIOUS	ER-2971	SIDEWALK PROGRAM IN ALL FOURTEEN HIGHWAY DIVISIONS.	CONSTRUCTION	STP	15,347	PRIOR YEARS
					9,800	FY 07 08 09 10 11 12 13
					TOTAL PROJECT COST	25,147

* INDICATES INTRASTATE PROJECT
 GREEN TEXT INDICATES DELIVERABLE STIP PROJECT

COST AND SCHEDULES ARE PRELIMINARY AND SUBJECT TO
 SIGNIFICANT CHANGE AS MORE INFORMATION BECOMES AVAILABLE

TRANSPORTATION PROGRAM

STATEWIDE

ROUTE/CITY	ID. NO. / BREAK	LOCATION - DESCRIPTION - MILEAGE - BREAK	WORK TYPE	FUNDING SOURCE	COST ESTIMATES (THOU)	SCHEDULE (FISCAL YEARS)
ENHANCEMENT (ROADSIDE PROJECTS)						
VARIOUS	ER-2973	ROADSIDE BEAUTIFICATION PROJECTS IN ALL FOURTEEN HIGHWAY DIVISIONS.	LANDSCAPING	STP	50,458 24,500	PRIOR YEARS FY 07 08 09 10 11 12 13
TOTAL PROJECT COST					74,958	
VARIOUS	ER-3100	PLANTING OF WILDFLOWERS AND PERENNIAL BULBS ON FEDERAL-AID SYSTEM.	LANDSCAPING	STP	7,400 6,300	PRIOR YEARS FY 07 08 09 10 11 12 13
TOTAL PROJECT COST					13,700	
VARIOUS	ER-3101	SPECIAL EVENTS PLANTING STATEWIDE.	LANDSCAPING	STP	8,175 5,600	PRIOR YEARS FY 07 08 09 10 11 12 13
TOTAL PROJECT COST					13,775	
VARIOUS	ER-3102	IMPLEMENTATION OF STATEWIDE SCENIC BYWAYS PROGRAM.	IMPLEMENTATION	STP	1,550 1,050	PRIOR YEARS FY 07 08 09 10 11 12 13
TOTAL PROJECT COST					2,600	
VARIOUS	ER-3419	NORTH CAROLINA STATE BYWAYS BOOKLET PRINTING.			50	PRIOR YEARS
TOTAL PROJECT COST					50	
VARIOUS	ER-3611	COLOR CANOPY AND TREE PLANTING STATEWIDE.	LANDSCAPING	STP	2,765 4,400	PRIOR YEARS FY 07 08 09 10 11 12 13
TOTAL PROJECT COST					7,165	
VARIOUS	ER-4597	CONDUCT A STATEWIDE ANTI-LITTER CAMPAIGN AND PROMOTIONAL ACTIVITIES.	INSPECTION	S(M)	550 20	PRIOR YEARS FY 07
			INSPECTION	STP	80	FY 07
IN PROGRESS					TOTAL PROJECT COST	650
VARIOUS	L-1000	REPLACEMENT PLANTS AT SELECTED LOCATIONS WITHIN THE 14 HIGHWAY DIVISIONS. LANDSCAPE.	LANDSCAPING	PLF	1,482 670	PRIOR YEARS FY 07 08 09 10 11 12 13
IN PROGRESS					TOTAL PROJECT COST	2,152
VARIOUS	L-2133	PLANTING OF PERENNIAL BULBS AND WILDFLOWERS WITHIN THE 14 HIGHWAY DIVISIONS. LANDSCAPE.	LANDSCAPING	PLF	6,642 5,300	PRIOR YEARS FY 07 08 09 10 11 12 13
IN PROGRESS					TOTAL PROJECT COST	11,942

* INDICATES INTRASTATE PROJECT
 GREEN TEXT INDICATES DELIVERABLE STIP PROJECT

TRANSPORTATION PROGRAM

STATEWIDE

ROUTE/CITY	ID. NO. / BREAK	LOCATION - DESCRIPTION - MILEAGE - BREAK	WORK TYPE	FUNDING SOURCE	COST ESTIMATES (THOU)	SCHEDULE (FISCAL YEARS)
ENHANCEMENT (ROADSIDE PROJECTS)						
VARIOUS	L-2500	COLOR AND CANOPY AND TREE PLANTING.	LANDSCAPING	PLF	968 3,900	PRIOR YEARS FY 07 08 09 10 11 12 13
<i>IN PROGRESS</i>			TOTAL PROJECT COST		4,868	
VARIOUS	S-4005	EDUCATION ON SCENIC BYWAYS.			195	PRIOR YEARS
			TOTAL PROJECT COST		195	
HAZARD ELIMINATION PROJECTS						
VARIOUS	SI-4735	SAFETY MANAGEMENT INITIATIVES.			1,107	PRIOR YEARS
			TOTAL PROJECT COST		1,107	
VARIOUS	SI-4900	BLUE STAR MEMORIAL HIGHWAY SIGNING. INSTALL SIGNS AT VARIOUS LOCATIONS STATEWIDE.	CONSTRUCTION		250	PRIOR YEARS IN PROGRESS
<i>UNDER CONSTRUCTION</i>			TOTAL PROJECT COST		250	
VARIOUS	SI-4901	NO NEED 2 SPEED SAFETY INITIATIVE. SIGNING, EVALUATION, AND IMPLEMENTATION.	IMPLEMENTATION		280	PRIOR YEARS IN PROGRESS
			TOTAL PROJECT COST		280	
VARIOUS	SI-4902	FREEWAY SIGNING INITIATIVE. INSTALL OR REPLACE CRITICAL DIRECTIONAL SIGNS.	CONSTRUCTION		200	PRIOR YEARS IN PROGRESS
<i>UNDER CONSTRUCTION</i>			TOTAL PROJECT COST		200	
VARIOUS	W-4447	SAFETY MANAGEMENT PROGRAM, PROJECT IDENTIFICATION, ANALYSIS AND PRELIMINARY ENGINEERING.	ENGINEERING	HES	8,500 24,500	PRIOR YEARS FY 07 08 09 10 11 12 13
			TOTAL PROJECT COST		33,000	
VARIOUS	W-4714	HAZARD ELIMINATION PROJECT FOR RUMBLE STRIPS, SHOULDERS, ROADSIDE SAFETY IMPROVEMENTS, AUXILIARY TURN LANES, RAISED PAVEMENT MARKERS AND PROFILE TYPE PAVEMENT MARKINGS.	CONSTRUCTION	HES	4,000	FY 10 11 12 13
			TOTAL PROJECT COST		4,000	
VARIOUS	W-4715	POSITIVE MEDIAN BARRIER PROJECTS.	CONSTRUCTION	HES	5,000	FY 09 10 11 12 13
			TOTAL PROJECT COST		5,000	

* INDICATES INTRASTATE PROJECT
 GREEN TEXT INDICATES DELIVERABLE STIP PROJECT

COST AND SCHEDULES ARE PRELIMINARY AND SUBJECT TO
 SIGNIFICANT CHANGE AS MORE INFORMATION BECOMES AVAILABLE

TRANSPORTATION PROGRAM

STATEWIDE

ROUTE/CITY	ID. NO. / BREAK	LOCATION - DESCRIPTION - MILEAGE - BREAK	WORK TYPE	FUNDING SOURCE	COST ESTIMATES (THOU)	SCHEDULE (FISCAL YEARS)
HAZARD ELIMINATION PROJECTS						
VARIOUS	W-4716	MEDIAN INLET REPLACEMENT PROJECT.	CONSTRUCTION	HES	650	FY 09
					TOTAL PROJECT COST	650
VARIOUS	W-9999	HIGH HAZARD BALANCE, FISCAL YEARS 07-13.	CONSTRUCTION	HES	129,000	FY 08 09 10 11 12 13
					TOTAL PROJECT COST	129,000
SAFE ROUTES TO SCHOOLS						
VARIOUS	SR-5000	SAFE ROUTES TO SCHOOL PROGRAM. EDUCATIONAL, TRAINING AND OTHER NON-INFRASTRUCTURE NEEDS.	IMPLEMENTATION	SRTS	400 6,572	PRIOR YEARS FY 07 08 09 10 11 12 13
					TOTAL PROJECT COST	6,972
<i>IN PROGRESS</i>						
VARIOUS	SR-5001	SAFE ROUTES TO SCHOOL PROGRAM. PROJECTS TO IMPROVE SAFETY, REDUCE TRAFFIC, FUEL COMSUMPTION AND AIR POLLUTION IN VICINITY OF SCHOOLS.	CONSTRUCTION	SRTS	200 27,622	PRIOR YEARS FY 07 08 09 10 11 12 13
					TOTAL PROJECT COST	27,822
PASSENGER RAIL PROJECTS						
NCRR	P-3414	TRAVEL TIME IMPROVEMENTS TO FREIGHT AND PASSENGER RAIL CORRIDORS BETWEEN RALEIGH AND CHARLOTTE AND MATCH FEDERAL FUNDS.			61,500	PRIOR YEARS
					TOTAL PROJECT COST	61,500
<i>IN PROGRESS</i>						
NCRR/CSX	P-3819	FEDERALLY-DESIGNATED HIGH SPEED RAIL CORRIDOR BETWEEN CHARLOTTE AND VIRGINIA STATE LINE, ENVIRONMENTAL STUDY, PRELIMINARY ENGINEERING, RIGHT OF WAY, DESIGN AND CONSTRUCTION.	CONSTRUCTION	T2001	2,900 8,400	PRIOR YEARS FY 07 08 09 10 11 12 13
					TOTAL PROJECT COST	11,300
CSX "S" LINE	P-3816	RIDGEWAY-APEX-DURHAM, ACQUIRE RAIL RIGHT OF WAY AND TRACK. 86 Mile(s)			100	PRIOR YEARS
					TOTAL PROJECT COST	100
<i>IN PROGRESS</i>						
VARIOUS	P-3309	AT-GRADE CROSSING ELIMINATION AND IMPROVEMENT PROJECTS, CORRIDOR INVENTORIES AND STUDIES IN ALL FOURTEEN (14) DIVISIONS.	CONSTRUCTION CONSTRUCTION	RR T2001	3,870 2,401 2,401	PRIOR YEARS FY 07 08 09 10 11 12 13 FY 07 08 09 10 11 12 13
					TOTAL PROJECT COST	8,672
VARIOUS	P-3418	PLANNING, MANAGEMENT AND RESEARCH STUDIES.	STUDY	T2001	4,767 5,600	PRIOR YEARS FY 07 08 09 10 11 12 13
					TOTAL PROJECT COST	10,367

* INDICATES INTRASTATE PROJECT
 GREEN TEXT INDICATES DELIVERABLE STIP PROJECT

COST AND SCHEDULES ARE PRELIMINARY AND SUBJECT TO
 SIGNIFICANT CHANGE AS MORE INFORMATION BECOMES AVAILABLE

TRANSPORTATION PROGRAM

STATEWIDE

ROUTE/CITY	ID. NO. / BREAK	LOCATION - DESCRIPTION - MILEAGE - BREAK	WORK TYPE	FUNDING SOURCE	COST ESTIMATES (THOU)	SCHEDULE (FISCAL YEARS)
PASSENGER RAIL PROJECTS						
VARIOUS	P-3419	SEALED CORRIDOR-SELECTED SEHSRC CROSSINGS. MEDIAN BARRIERS, ARTICULATED GATES, FOUR- QUADRANT GATES, WARNING DEVICE REVISIONS, SIGNAGE AND CAMERA SYSTEMS.			12,307	PRIOR YEARS
		UNDER CONSTRUCTION			TOTAL PROJECT COST	12,307
VARIOUS	P-3806	PASSENGER CARS AND PRELIMINARY ENGINEERING FOR WESTERN NORTH CAROLINA PASSENGER SERVICE BETWEEN ASHEVILLE AND SALISBURY.			3,441	PRIOR YEARS
		PHASE 2 - PENDING			TOTAL PROJECT COST	3,441
VARIOUS	P-3809	RAILROAD SAFETY INSPECTIONS IN ALL FOURTEEN (14) DIVISIONS.			2,374	PRIOR YEARS
			INSPECTION	RR	434	FY 07 08 09 10 11 12 13
			INSPECTION	T2001	3,155	FY 07 08 09 10 11 12 13
					TOTAL PROJECT COST	5,963
VARIOUS	P-3812	INSTALLATION AND EVALUATION OF INNOVATIVE CROSSING WARNING DEVICE AT A LOCATION TO BE SELECTED.			105	PRIOR YEARS
		UNDER CONSTRUCTION			TOTAL PROJECT COST	105
VARIOUS	P-3814	CROSSING CONSOLIDATION PROJECTS AS IDENTIFIED IN SOUTH END SEHSRC TRAFFIC SEPARATION STUDY. RIGHT OF WAY TO BE ACQUIRED BY MUNICIPALITIES.			597	PRIOR YEARS
		UNDER CONSTRUCTION			TOTAL PROJECT COST	597
VARIOUS	P-3815	CROSSING CONSOLIDATION PROJECTS AS IDENTIFIED IN NEWTON-HICKORY-CONOVER MPO TRAFFIC SEPARATION STUDY.			1,620	PRIOR YEARS
		UNDER CONSTRUCTION			TOTAL PROJECT COST	1,620
VARIOUS	P-4001	RAIL INDUSTRIAL ACCESS PROGRAM.			5,000	PRIOR YEARS
			CONSTRUCTION	T2001	7,000	FY 07 08 09 10 11 12 13
					TOTAL PROJECT COST	12,000
VARIOUS	P-4404	SOUTHEAST HIGH SPEED RAIL CORRIDOR. UPDATE RAIL CROSSING INVENTORY FROM SOUTH CAROLINA STATE LINE TO THE VIRGINIA STATE LINE VIA RALEIGH AND CHARLOTTE AND THE APEX/CARY BYPASS SEGMENT.			150	PRIOR YEARS
		IN PROGRESS			TOTAL PROJECT COST	150
VARIOUS	P-4405	PRIVATE CROSSING SAFETY INITIATIVE TO CLOSE OR ENHANCE PROTECTION AT RAILROAD CROSSINGS BETWEEN RALEIGH AND CHARLOTTE.			1,400	PRIOR YEARS
		UNDER CONSTRUCTION			TOTAL PROJECT COST	1,400

* INDICATES INTRASTATE PROJECT
 GREEN TEXT INDICATES DELIVERABLE STIP PROJECT

TRANSPORTATION PROGRAM

STATEWIDE

ROUTE/CITY	ID. NO. / BREAK	LOCATION - DESCRIPTION - MILEAGE - BREAK	WORK TYPE	FUNDING SOURCE	COST ESTIMATES (THOU)	SCHEDULE (FISCAL YEARS)
PASSENGER RAIL PROJECTS						
VARIOUS	P-4700	RAILROAD STATION REHABILITATION PROJECTS.			3,500	PRIOR YEARS
			CONSTRUCTION	STP	15,400	FY 07 08 09 10 11 12 13
			TOTAL PROJECT COST		18,900	
VARIOUS	P-4701	CAPACITY AND TRAVEL TIME IMPROVEMENTS TO FREIGHT AND PASSENGER RAIL CORRIDORS, NEW EQUIPMENT AND MATCH FOR FEDERAL FUNDS.			48,569	PRIOR YEARS
			CONSTRUCTION	T2001	53,854	FY 07 08 09 10 11 12 13
			TOTAL PROJECT COST		102,423	
VARIOUS	P-4702	MAINTENANCE OF RAILROAD TRACK AND SIGNAL IMPROVEMENTS.			2,587	PRIOR YEARS
			CONSTRUCTION	T2001	5,915	FY 07 08 09 10 11 12 13
			TOTAL PROJECT COST		8,502	
VARIOUS	SB-4100	SAFE ROADS FOR SAFE SCHOOLS PROGRAM. INSTALL RAIL/HIGHWAY CROSSINGS AT SIXTY LOCATIONS ON SCHOOL BUS ROUTES.			6,000	PRIOR YEARS
		<i>UNDER CONSTRUCTION</i>	TOTAL PROJECT COST		6,000	
VARIOUS	Y-4100	HIGHWAY/RAIL CROSSINGS SAFETY IMPROVEMENTS AND INVENTORY (FFY 00 AND 01), PASSENGER ROUTES.			4,100	PRIOR YEARS
		<i>UNDER CONSTRUCTION</i>	TOTAL PROJECT COST		4,100	
VARIOUS	Y-4415	HIGHWAY-RAIL CROSSING INVENTORY.			1,275	PRIOR YEARS
			CONSTRUCTION	RR	2,331	FY 07 08 09 10 11 12 13
		<i>IN PROGRESS</i>	TOTAL PROJECT COST		3,606	
VARIOUS	Y-4800	TRAFFIC SEPARATION STUDY IMPLEMENTATION AND CLOSURES.			8,385	PRIOR YEARS
			CONSTRUCTION	RR	15,575	FY 07 08 09 10 11 12 13
		<i>IN PROGRESS</i>	TOTAL PROJECT COST		23,960	
VARIOUS	Y-9999	HIGHWAY-RAIL CROSSING SAFETY IMPROVEMENTS, PASSENGER ROUTES.			6,725	PRIOR YEARS
			CONSTRUCTION	RR	4,033	FY 07 08 09 10 11 12 13
		<i>IN PROGRESS</i>	TOTAL PROJECT COST		10,758	
VARIOUS	Z-4100	HIGHWAY-RAIL CROSSING SAFETY IMPROVEMENTS AND INVENTORY.			9,000	PRIOR YEARS
		<i>IN PROGRESS</i>	TOTAL PROJECT COST		9,000	

* INDICATES INTRASTATE PROJECT
 GREEN TEXT INDICATES DELIVERABLE STIP PROJECT

COST AND SCHEDULES ARE PRELIMINARY AND SUBJECT TO
 SIGNIFICANT CHANGE AS MORE INFORMATION BECOMES AVAILABLE

TRANSPORTATION PROGRAM

STATEWIDE

ROUTE/CITY	ID. NO. / BREAK	LOCATION - DESCRIPTION - MILEAGE - BREAK	WORK TYPE	FUNDING SOURCE	COST ESTIMATES (THOU)	SCHEDULE (FISCAL YEARS)
PASSENGER RAIL PROJECTS						
VARIOUS	Z-4500	HIGHWAY-RAIL CROSSING SAFETY IMPROVEMENTS.	CONSTRUCTION	RR	12,929 45,233	PRIOR YEARS FY 07 08 09 10 11 12 13
<i>IN PROGRESS</i>			TOTAL PROJECT COST		58,162	
ROADSIDE ENVIRONMENTAL PROJECTS (REST AREA)						
VARIOUS	K-4704	INTERSTATE REST AREA SYSTEM PRESERVATION. PAVEMENT, PAVEMENT MARKING, CURB AND GUTTER, SIDEWALKS AND OTHER REHABILITATION ITEMS.	CONSTRUCTION	IM	695 5,800	PRIOR YEARS FY 07 08 09 10 11 12 13
<i>IN PROGRESS</i>			TOTAL PROJECT COST		6,495	

PUBLIC TRANSPORTATION PROGRAM

STATEWIDE

ROUTE/CITY	ID. NO. / BREAK	LOCATION - DESCRIPTION - MILEAGE - BREAK	WORK TYPE	FUNDING SOURCE	COST ESTIMATES (THOU)	SCHEDULE (FISCAL YEARS)
PUBLIC TRANSPORTATION PROJECTS						
STATEWIDE	C-4900	CREATE A COMMUTER ASSISTANCE PROGRAM MANAGER POSITION IN NCDOT	OPERATIONS OPERATIONS	CMAQ STAT	302 76	FY 07 08 FY 07 08
			TOTAL PROJECT COST		378	
STATEWIDE	TB-4900X	PROVIDE FUNDS FOR THE PURCHASE OF CAPITAL EQUIPMENT TO SUPPORT HUMAN SERVICE AND GENERAL PUBLIC TRANSPORTATION SERVICES PROVIDED BY COMMUNITY TRANSPORTATION SYSTEMS.	CAPITAL CAPITAL	L STCP	861 7,750	FY 07 FY 07
			TOTAL PROJECT COST		8,611	
STATEWIDE	TB-4900Y	PROVIDE FUNDS FOR THE PURCHASE OF CAPITAL EQUIPMENT TO SUPPORT HUMAN SERVICE AND GENERAL PUBLIC TRANSPORTATION SERVICES PROVIDED BY COMMUNITY TRANSPORTATION SYSTEMS.	CAPITAL CAPITAL	L STCP	861 7,750	FY 08 FY 08
			TOTAL PROJECT COST		8,611	
STATEWIDE	TB-4900Z	PROVIDE FUNDS FOR THE PURCHASE OF CAPITAL EQUIPMENT TO SUPPORT HUMAN SERVICE AND GENERAL PUBLIC TRANSPORTATION SERVICES PROVIDED BY COMMUNITY TRANSPORTATION SYSTEMS.	CAPITAL CAPITAL	L STCP	4,305 38,750	FY 09 10 11 12 13 FY 09 10 11 12 13
			TOTAL PROJECT COST		43,055	
STATEWIDE	TF-4900X	PROVIDE FUNDS TO CONSTRUCT AND/OR IMPROVE PUBLIC TRANSPORTATION FACILITIES IN RURAL AREAS.	CAPITAL CAPITAL	L SFCP	66 600	FY 07 FY 07
			TOTAL PROJECT COST		666	

* INDICATES INTRASTATE PROJECT
 GREEN TEXT INDICATES DELIVERABLE STIP PROJECT

PUBLIC TRANSPORTATION PROGRAM

STATEWIDE

ROUTE/CITY	ID. NO. / BREAK	LOCATION - DESCRIPTION - MILEAGE - BREAK	WORK TYPE	FUNDING SOURCE	COST ESTIMATES (THOU)	SCHEDULE (FISCAL YEARS)
PUBLIC TRANSPORTATION PROJECTS						
STATEWIDE	TF-4900Y	PROVIDE FUNDS TO CONSTRUCT AND/OR IMPROVE PUBLIC TRANSPORTATION FACILITIES IN RURAL AREAS.	CAPITAL CAPITAL	L SFCP	66 600	FY 08 FY 08
TOTAL PROJECT COST					666	
STATEWIDE	TF-4900Z	PROVIDE FUNDS TO CONSTRUCT AND/OR IMPROVE PUBLIC TRANSPORTATION FACILITIES IN RURAL AREAS.	CAPITAL CAPITAL	L SFCP	330 3,000	FY 09 10 11 12 13 FY 09 10 11 12 13
TOTAL PROJECT COST					3,330	
STATEWIDE	TI-4900X	STATEWIDE PROGRAM TO PROVIDE OPERATING ASSISTANCE TO EXPAND AND IMPROVE REGIONAL AND INTER-CITY PUBLIC TRANSPORTATION	OPERATIONS OPERATIONS	FNU RIMA	400 400	FY 07 FY 07
TOTAL PROJECT COST					800	
STATEWIDE	TI-4900Y	STATEWIDE PROGRAM TO PROVIDE OPERATING ASSISTANCE TO EXPAND AND IMPROVE REGIONAL AND INTER-CITY PUBLIC TRANSPORTATION	OPERATIONS OPERATIONS	FNU RIMA	400 400	FY 08 FY 08
TOTAL PROJECT COST					800	
STATEWIDE	TI-4900Z	STATEWIDE PROGRAM TO PROVIDE OPERATING ASSISTANCE TO EXPAND AND IMPROVE REGIONAL AND INTER-CITY PUBLIC TRANSPORTATION	OPERATIONS OPERATIONS	FNU RIMA	2,000 2,000	FY 09 10 11 12 13 FY 09 10 11 12 13
TOTAL PROJECT COST					4,000	
STATEWIDE	TJ-4900Z	PROVIDE OPERATING ASSISTANCE ON A FORMULA BASIS TO COUNTIES AND COMMUNITY TRANSPORTATION SYSTEMS TO MEET WORK FIRST AND EMPLOYMENT TRANSPORTATION NEEDS.	OPERATIONS	OAWF	5,000	FY 09 10 11 12 13
TOTAL PROJECT COST					5,000	
STATEWIDE	TK-4900X	PROVIDE FUNDS TO SUPPORT THE ONGOING ADMINISTRATION, OPERATING AND CAPITAL FOR PUBLIC TRANSPORTATION SERVICES IN RURAL AND SMALL URBAN AREAS. INCLUDES TRANSFER FROM SECTION 5310 ELDERLY AND PERSONS WITH DISABILITIES PROGRAM.	ADMINISTRATIVE ADMINISTRATIVE ADMINISTRATIVE	FNU L STAT	18,382 3,217 1,379	FY 07 FY 07 FY 07
TOTAL PROJECT COST					22,978	
STATEWIDE	TK-4900Y	PROVIDE FUNDS TO SUPPORT THE ONGOING ADMINISTRATION, OPERATING AND CAPITAL FOR PUBLIC TRANSPORTATION SERVICES IN RURAL AND SMALL URBAN AREAS. INCLUDES TRANSFER FROM SECTION 5310 ELDERLY AND PERSONS WITH DISABILITIES PROGRAM.	ADMINISTRATIVE ADMINISTRATIVE ADMINISTRATIVE	FNU L STAT	18,382 3,217 1,379	FY 08 FY 08 FY 08
TOTAL PROJECT COST					22,978	

* INDICATES INTRASTATE PROJECT
 GREEN TEXT INDICATES DELIVERABLE STIP PROJECT

PUBLIC TRANSPORTATION PROGRAM

STATEWIDE

ROUTE/CITY	ID. NO. / BREAK	LOCATION - DESCRIPTION - MILEAGE - BREAK	WORK TYPE	FUNDING SOURCE	COST ESTIMATES (THOU)	SCHEDULE (FISCAL YEARS)
PUBLIC TRANSPORTATION PROJECTS						
STATEWIDE	TK-4900Z	PROVIDE FUNDS TO SUPPORT THE ONGOING ADMINISTRATION AND CAPITAL FOR PUBLIC TRANSPORTATION SERVICES IN RURAL AND SMALL URBAN AREAS. INCLUDES TRANSFER FROM SECTION 5310 ELDERLY AND PERSONS WITH DISABILITIES PROGRAM.	ADMINISTRATIVE ADMINISTRATIVE ADMINISTRATIVE	FNU L STAT	91,910 16,085 6,895	FY 08 09 10 11 12 FY 09 10 11 12 13 FY 09 10 11 12 13
TOTAL PROJECT COST					114,890	
STATEWIDE	TL-4900Z	PROVIDE OPERATING ASSISTANCE FOR ADDITIONAL TRANSPORTATION SERVICES TO THE ELDERLY AND DISABLED.	OPERATIONS	EDTAP	27,500	FY 09 10 11 12 13
TOTAL PROJECT COST					27,500	
STATEWIDE	TM-5101	JOB ACCESS/REVERSE COMMUTE IN RURAL AREAS	OPERATIONS OPERATIONS	JARC L	1,378 1,378	FY 07 FY 07
TOTAL PROJECT COST					2,756	
STATEWIDE	TM-5102	JOB ACCESS/REVERSE COMMUTE IN RURAL AREAS	OPERATIONS OPERATIONS	JARC L	1,378 1,378	FY 08 FY 08
TOTAL PROJECT COST					2,756	
STATEWIDE	TM-5103	JOB ACCESS/REVERSE COMMUTE IN RURAL AREAS	OPERATIONS OPERATIONS	JARC L	6,890 6,890	FY 09 10 11 12 13 FY 09 10 11 12 13
TOTAL PROJECT COST					13,780	
STATEWIDE	TM-5110	PROVIDE FUNDING FOR NEW PUBLIC TRANSPORTATION SERVICES BEYOND THOSE REQUIRED BY ADA THAT ASSIST INDIVIDUALS WITH DISABILITIES	OPERATIONS OPERATIONS	FNF L	832 832	FY 07 FY 07
TOTAL PROJECT COST					1,664	
STATEWIDE	TM-5111	PROVIDE FUNDING FOR NEW PUBLIC TRANSPORTATION SERVICES BEYOND THOSE REQUIRED BY ADA THAT ASSIST INDIVIDUALS WITH DISABILITIES	OPERATIONS OPERATIONS	FNF L	832 832	FY 08 FY 08
TOTAL PROJECT COST					1,664	
STATEWIDE	TM-5112	PROVIDE FUNDING FOR NEW PUBLIC TRANSPORTATION SERVICES BEYOND THOSE REQUIRED BY ADA THAT ASSIST INDIVIDUALS WITH DISABILITIES	OPERATIONS OPERATIONS	FNF L	4,160 4,160	FY 09 10 11 12 13 FY 09 10 11 12 13
TOTAL PROJECT COST					8,320	
STATEWIDE	TM-4900X	PROVIDE ADMINISTRATIVE ASSISTANCE FOR COMMUNITY TRANSPORTATION SYSTEMS	ADMINISTRATIVE ADMINISTRATIVE	HSTM L	2,700 476	FY 07 FY 07
TOTAL PROJECT COST					3,176	

* INDICATES INTRASTATE PROJECT

GREEN TEXT INDICATES DELIVERABLE STIP PROJECT

PUBLIC TRANSPORTATION PROGRAM

STATEWIDE

ROUTE/CITY	ID. NO. / BREAK	LOCATION - DESCRIPTION - MILEAGE - BREAK	WORK TYPE	FUNDING SOURCE	COST ESTIMATES (THOU)	SCHEDULE (FISCAL YEARS)
PUBLIC TRANSPORTATION PROJECTS						
STATEWIDE	TN-4900Y	PROVIDE ADMINISTRATIVE ASSISTANCE FOR COMMUNITY TRANSPORTATION SYSTEMS	ADMINISTRATIVE ADMINISTRATIVE	HSTM L	2,700 476	FY 08 FY 08
TOTAL PROJECT COST					3,176	
STATEWIDE	TN-4900Z	PROVIDE ADMINISTRATIVE ASSISTANCE FOR COMMUNITY TRANSPORTATION SYSTEMS	ADMINISTRATIVE ADMINISTRATIVE	HSTM L	13,500 2,380	FY 09 10 11 12 13 FY 09 10 11 12 13
TOTAL PROJECT COST					15,880	
STATEWIDE	TP-4900U	PLANNING PROGRAM (SECTION 5303) TO SUPPORT THE PLANNING ACTIVITIES OF MPOS ACROSS THE STATE	PLANNING/DESIGN PLANNING/DESIGN PLANNING/DESIGN	FMPL L STAT	1,135 142 142	FY 07 FY 07 FY 07
TOTAL PROJECT COST					1,419	
STATEWIDE	TP-4900V	PLANNING PROGRAM (SECTION 5303) TO SUPPORT THE PLANNING ACTIVITIES OF MPOS ACROSS THE STATE	PLANNING/DESIGN PLANNING/DESIGN PLANNING/DESIGN	FMPL L STAT	1,135 142 142	FY 08 FY 08 FY 08
TOTAL PROJECT COST					1,419	
STATEWIDE	TP-4900W	PLANNING PROGRAM (SECTION 5303) TO SUPPORT THE PLANNING ACTIVITIES OF MPOS ACROSS THE STATE	PLANNING/DESIGN PLANNING/DESIGN PLANNING/DESIGN	FMPL L STAT	5,675 710 710	FY 09 10 11 12 13 FY 09 10 11 12 13 FY 09 10 11 12 13
TOTAL PROJECT COST					7,095	
STATEWIDE	TP-4900Y	STATEWIDE PLANNING AND RESEARCH PROGRAM TO PROVIDE STATE ADMINISTRATION AND PLANNING ASSISTANCE FOR THE URBANIZED AREAS OF GREATER THAN 50,000 POPULATION	PLANNING/DESIGN PLANNING/DESIGN	FSPR STAT	296 74	FY 07 FY 07
TOTAL PROJECT COST					370	
STATEWIDE	TP-4900Z	STATEWIDE PLANNING AND RESEARCH PROGRAM TO PROVIDE STATE ADMINISTRATION AND PLANNING ASSISTANCE FOR THE URBANIZED AREAS OF GREATER THAN 50,000 POPULATION	PLANNING/DESIGN PLANNING/DESIGN	FSPR STAT	296 74	FY 08 FY 08
TOTAL PROJECT COST					370	
STATEWIDE	TP-4901A	STATEWIDE PLANNING AND RESEARCH PROGRAM TO PROVIDE STATE ADMINISTRATION AND PLANNING ASSISTANCE FOR THE URBANIZED AREAS OF GREATER THAN 50,000 POPULATION	PLANNING/DESIGN PLANNING/DESIGN	FSPR STAT	1,480 370	FY 09 10 11 12 13 FY 09 10 11 12 13
TOTAL PROJECT COST					1,850	

* INDICATES INTRASTATE PROJECT
 GREEN TEXT INDICATES DELIVERABLE STIP PROJECT

COST AND SCHEDULES ARE PRELIMINARY AND SUBJECT TO
 SIGNIFICANT CHANGE AS MORE INFORMATION BECOMES AVAILABLE

PUBLIC TRANSPORTATION PROGRAM

STATEWIDE

ROUTE/CITY	ID. NO. / BREAK	LOCATION - DESCRIPTION - MILEAGE - BREAK	WORK TYPE	FUNDING SOURCE	COST ESTIMATES (THOU)	SCHEDULE (FISCAL YEARS)
PUBLIC TRANSPORTATION PROJECTS						
STATEWIDE	TQ-4900X	PROVIDE FUNDS FOR STATE ADMINISTRATION OF THE PROGRAM AND SUPPORT OF ONGOING PUBLIC TRANSPORTATION PLANNING ACTIVITIES IN RURAL AND SMALL URBAN AREAS.	PLANNING/DESIGN	FNU	2,000	FY 07
			PLANNING/DESIGN	L	250	FY 07
			PLANNING/DESIGN	STAT	250	FY 07
			TOTAL PROJECT COST		2,500	
STATEWIDE	TQ-4900Y	PROVIDE FUNDS FOR STATE ADMINISTRATION OF THE PROGRAM AND SUPPORT OF ONGOING PUBLIC TRANSPORTATION PLANNING ACTIVITIES IN RURAL AND SMALL URBAN AREAS.	PLANNING/DESIGN	FNU	2,000	FY 08
			PLANNING/DESIGN	L	250	FY 08
			PLANNING/DESIGN	STAT	250	FY 08
			TOTAL PROJECT COST		2,500	
STATEWIDE	TQ-4900Z	PROVIDE FUNDS FOR STATE ADMINISTRATION OF THE PROGRAM AND SUPPORT OF ONGOING PUBLIC TRANSPORTATION PLANNING ACTIVITIES IN RURAL AND SMALL URBAN AREAS.	PLANNING/DESIGN	FNU	10,000	FY 09 10 11 12 13
			PLANNING/DESIGN	L	1,250	FY 09 10 11 12 13
			PLANNING/DESIGN	STAT	1,250	FY 09 10 11 12 13
			TOTAL PROJECT COST		12,500	
STATEWIDE	TR-4900Z	PROVIDE MAINTENANCE ASSISTANCE FOR COMMUNITY TRANSPORTATION SYSTEMS TO SERVE THE RURAL GENERAL PUBLIC.	OPERATIONS	RGP	22,500	FY 09 10 11 12 13
			TOTAL PROJECT COST		22,500	
STATEWIDE	TS-4900X	STATEWIDE PROGRAM TO DEVELOP AND IMPLEMENT TRAINING AND OTHER SUPPORT SERVICES FOR RURAL, SMALL URBAN AREA AND PARATRANSIT OPERATIONS.	ADMINISTRATIVE	L	24	FY 07
			ADMINISTRATIVE	RTAP	217	FY 07
			TOTAL PROJECT COST		241	
STATEWIDE	TS-4900Y	STATEWIDE PROGRAM TO DEVELOP AND IMPLEMENT TRAINING AND OTHER SUPPORT SERVICES FOR RURAL, SMALL URBAN AREA AND PARATRANSIT OPERATIONS.	ADMINISTRATIVE	L	24	FY 08
			ADMINISTRATIVE	RTAP	217	FY 08
			TOTAL PROJECT COST		241	
STATEWIDE	TS-4900Z	STATEWIDE PROGRAM TO DEVELOP AND IMPLEMENT TRAINING AND OTHER SUPPORT SERVICES FOR RURAL, SMALL URBAN AREA AND PARATRANSIT OPERATIONS.	ADMINISTRATIVE	L	120	FY 09 10 11 12 13
			ADMINISTRATIVE	RTAP	1,085	FY 09 10 11 12 13
			TOTAL PROJECT COST		1,205	
STATEWIDE	TT-4900X	PROVIDE FUNDING FOR THE PURCHASE OF ADVANCED TECHNOLOGIES IN URBAN AREAS THAT WILL INCREASE OVERALL SYSTEM EFFICIENCY AND EFFECTIVENESS.	CAPITAL	L	178	FY 07
			CAPITAL	UTCH	1,600	FY 07
			TOTAL PROJECT COST		1,778	

* INDICATES INTRASTATE PROJECT
 GREEN TEXT INDICATES DELIVERABLE STIP PROJECT

PUBLIC TRANSPORTATION PROGRAM

STATEWIDE

ROUTE/CITY	ID. NO. / BREAK	LOCATION - DESCRIPTION - MILEAGE - BREAK	WORK TYPE	FUNDING SOURCE	COST ESTIMATES (THOU)	SCHEDULE (FISCAL YEARS)
PUBLIC TRANSPORTATION PROJECTS						
STATEWIDE	TT-4900Y	PROVIDE FUNDING FOR THE PURCHASE OF ADVANCED TECHNOLOGIES IN URBAN AREAS THAT WILL INCREASE OVERALL SYSTEM EFFICIENCY AND EFFECTIVENESS.	CAPITAL CAPITAL	L UTCH	178 1,600	FY 08 FY 08
TOTAL PROJECT COST					1,778	
STATEWIDE	TT-4900Z	PROVIDE FUNDING FOR THE PURCHASE OF ADVANCED TECHNOLOGIES IN URBAN AREAS THAT WILL INCREASE OVERALL SYSTEM EFFICIENCY AND EFFECTIVENESS.	CAPITAL CAPITAL	L UTCH	890 8,000	FY 09 10 11 12 13 FY 09 10 11 12 13
TOTAL PROJECT COST					8,890	
STATEWIDE	TU-4900X	PROVIDE FUNDING FOR THE PURCHASE OF COMPUTERS AND ADVANCED TECHNOLOGIES IN RURAL AREAS THAT WILL INCREASE OVERALL SYSTEM EFFICIENCY AND EFFECTIVENESS.	CAPITAL CAPITAL	L RTCH	55 500	FY 07 FY 07
TOTAL PROJECT COST					555	
STATEWIDE	TU-4900Y	PROVIDE FUNDING FOR THE PURCHASE OF COMPUTERS AND ADVANCED TECHNOLOGIES IN RURAL AREAS THAT WILL INCREASE OVERALL SYSTEM EFFICIENCY AND EFFECTIVENESS.	CAPITAL CAPITAL	L RTCH	55 500	FY 08 FY 08
TOTAL PROJECT COST					555	
STATEWIDE	TU-4900Z	PROVIDE FUNDING FOR THE PURCHASE OF COMPUTERS AND ADVANCED TECHNOLOGIES IN RURAL AREAS THAT WILL INCREASE OVERALL SYSTEM EFFICIENCY AND EFFECTIVENESS.	CAPITAL CAPITAL	L RTCH	275 2,500	FY 09 10 11 12 13 FY 09 10 11 12 13
TOTAL PROJECT COST					2,775	
STATEWIDE	TV-4901	PROVIDE OPERATING ASSISTANCE FOR SERVICE TO THE ELDERLY AND DISABLED	OPERATIONS OPERATIONS	FED STAT	1,046 1,046	FY 07 FY 07
TOTAL PROJECT COST					2,092	
STATEWIDE	TV-4902	PROVIDE OPERATING ASSISTANCE FOR SERVICE TO THE ELDERLY AND DISABLED	OPERATIONS OPERATIONS	FED STAT	1,046 1,046	FY 08 FY 08
TOTAL PROJECT COST					2,092	
STATEWIDE	TV-4903	PROVIDE OPERATING ASSISTANCE FOR SERVICE TO THE ELDERLY AND DISABLED	OPERATIONS OPERATIONS	FED STAT	5,230 5,230	FY 09 10 11 12 13 FY 09 10 11 12 13
TOTAL PROJECT COST					10,460	

* INDICATES INTRASTATE PROJECT
 GREEN TEXT INDICATES DELIVERABLE STIP PROJECT

**RESOLUTION ADOPTING THE WILMINGTON URBAN AREA
METROPOLITAN AND STATEWIDE TRANSPORTATION IMPROVEMENT
PROGRAM FOR FY 2007-2013**

WHEREAS, the Transportation Advisory Committee has found that the Metropolitan Planning Organization is conducting transportation planning in a continuous, cooperative, and comprehensive manner; and

WHEREAS, the Transportation Advisory Committee has found that the proposed Transportation Improvement Program is in conformity with the Clean Air Act Amendments of 1990; and

WHEREAS, the Transportation Advisory Committee has provided for a 30-day public comment period for the proposed Metropolitan and Statewide Transportation Improvement Program; and

WHEREAS, the Transportation Advisory Committee has solicited public and private transportation comments; and

WHEREAS, the Transportation Advisory Committee has found the proposed Transportation Improvement Program to be in full compliance with Title VI of the Civil Rights Act; and

WHEREAS, the Transportation Advisory Committee has considered how the proposed Transportation Improvement Program will affect Disadvantaged Business Enterprises; and

WHEREAS, the Transportation Advisory Committee has considered how the proposed Transportation Improvement Program will affect the elderly and the disabled; and

WHEREAS, the proposed Transportation Improvement Program, for years one through three, will serve as the project selection document for transportation projects within the Wilmington Urban Area Boundary;

NOW THEREFORE, be it resolved by the Wilmington Urban Area Transportation Advisory Committee that the Metropolitan and Statewide Transportation Improvement Program for FY 2007-2013 be adopted for the Wilmington Urban Area Metropolitan Planning Organization on this 30th day of May 2007.

Lanny Wilson, Chairman
Transportation Advisory Committee

Mike Kozlosky, Secretary

**WILMINGTON URBAN AREA METROPOLITAN PLANNING ORGANIZATION
TRANSPORTATION ADVISORY COMMITTEE**

**RESOLUTION ADOPTING A NEW TRANSPORTATION MODEL FOR THE
WILMINGTON URBAN AREA**

WHEREAS, the transportation model is used by transportation planners and traffic engineers to evaluate existing and predict future travel conditions and evaluate future transportation projects; and

WHEREAS, the last transportation model for the Wilmington Urban Area was completed with a base year of 1997; and

WHEREAS, the previous transportation model was very antiquated therefore the MPO and NCDOT developed a new transportation model for the urban area; and

WHEREAS, the data for the update of the transportation model was collected in 2003 and expanded for a base year of 2005; and

WHEREAS, the new transportation model has a base year of 2005, an interim future year of 2020, and a future year of 2035; and

WHEREAS, this new transportation model will be used to forecast future growth, evaluate transportation projects and predict future travel patterns within the Wilmington Urban Area.

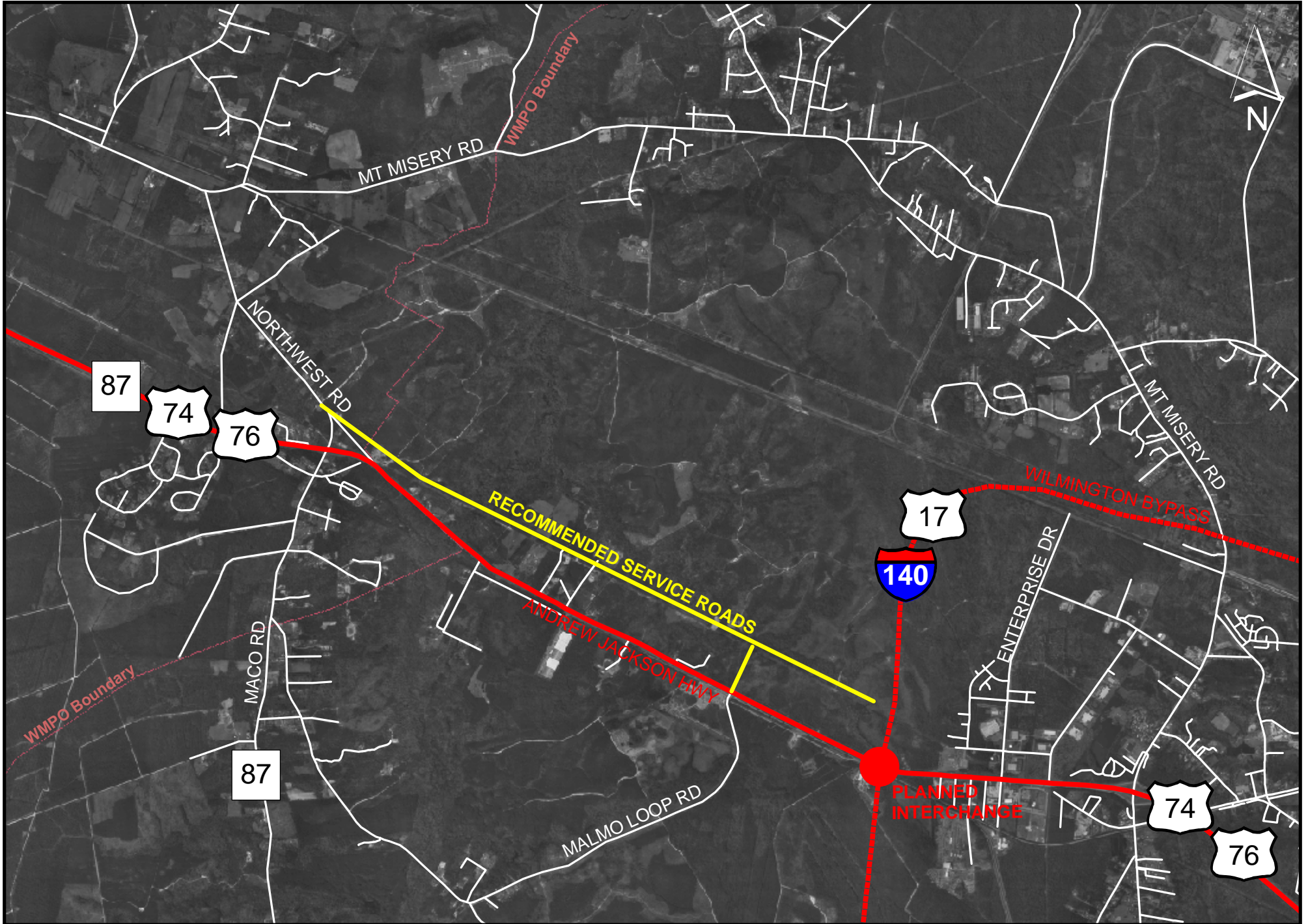
NOW THEREFORE, the Wilmington Urban Area Metropolitan Planning Organization's Transportation Advisory Committee hereby endorses the new transportation model that was presented on May 30, 2007.

ADOPTED at a regular meeting of the Wilmington Urban Area MPO Transportation Advisory Committee on May 30, 2007.

Lanny Wilson, Chair
Transportation Advisory Committee

Mike Kozlosky, Secretary

SERVICE ROAD PARALLEL TO US HIGHWAY 74-76



**WILMINGTON URBAN AREA METROPOLITAN PLANNING ORGANIZATION
TRANSPORTATION ADVISORY COMMITTEE**

**RESOLUTION SUPPORTING A SERVICE ROAD PARALLEL TO US HIGHWAY 74-76 BETWEEN
NORTHWEST ROAD AND THE WILMINGTON BYPASS IN BRUNSWICK COUNTY**

WHEREAS, the Brunswick County is a member of the Wilmington Urban Area Metropolitan Planning Organization, which is tasked with performing transportation planning activities in a continuing, cooperative and comprehensive manner; and

WHEREAS, the Brunswick County is experiencing a significant amount commercial and residential of growth along the US Highway 74-76 corridor; and

WHEREAS, the *Strategic Highway Corridors* were adopted by the North Carolina Board of Transportation on September 2, 2004, and

WHEREAS, the *Strategic Highway Corridors – Vision Plan for Southeastern North Carolina* identifies the US Highway 74-76 corridor as future Interstate 20, and

WHEREAS, the Wilmington Metropolitan Planning Organization wishes to preserve the mobility and integrity of the US Highway 74-76 corridor in order to preserve the possibility of upgrading it to interstate standards in the future; and

WHEREAS, the construction of a continuous service road parallel to and to the north of US Highway 74-76 between Northwest Road and a point just west of the planned Wilmington Bypass will minimize the need to interrupt the control of access along US Highway 74-76 for access to residential, commercial and industrial properties; and

WHEREAS, this continuous service road should be built so as to limit access to US Highway 74-76 to the intersection of Malmo Loop Road NE and the intersection of Northwest Road; and

NOW THEREFORE, be it resolved that the Transportation Advisory Committee of the Wilmington Urban Area Metropolitan Planning Organization does hereby endorse a continuous service road parallel to and to the north of US Highway 74-76 between Northwest Road and a point just west of the planned Wilmington Bypass so as to limit access to US Highway 74-76 to the intersection of Malmo Loop Road NE and the intersection of Northwest Road.

ADOPTED at a regular meeting of the Wilmington Urban Area Metropolitan Planning Organization Transportation Advisory Committee on May 30, 2007.

Lanny Wilson, Chair
Transportation Advisory Committee

Mike Kozlosky, Secretary



STATE OF NORTH CAROLINA
DEPARTMENT OF TRANSPORTATION

MICHAEL F. EASLEY
GOVERNOR

DIVISION OF HIGHWAYS

LYNDO TIPPETT
SECRETARY

April 25, 2007

TIP Projects:

1. **US 17 Wilmington Bypass: R-2405 A...** US 17 north of Wilmington, near Scotts Hill to I-40 contractor has recently opened the "Super-Street" section from Porter's Neck interchange to approximately 0.5 mile north of SR 1571 (Scott's Hill Road). We are still awaiting right of way for the completion of all the bulb-outs, for U-turn movements.

This opens the corridor from US 17 north of Wilmington to US 421 northwest of Wilmington.

2. **Military Cutoff (U-2734)**, constructing a multi-lane facility from US 17 (Market Street) to US 74 (Eastwood Drive). Traffic will be in the final pattern by July 2007.
Estimated Completion August/September 2007
3. **Military Cutoff Road Extension (U-4751) and Hampstead Bypass (R-3300)**: extending Military Cutoff Road from Market Street to the Wilmington Bypass, with an interchange at the Bypass. Also, from this interchange extend the multi-lane roadway to US 17 north of Hampstead. Right of way is scheduled for 2012.
4. **R-3601 US 17/74/76**: Widening across the "causeway", between Leland and Wilmington. Just beginning the planning process. We will move into the merger process afterwards and then to design. A scoping meeting will be held in the next couple of months. The TIP schedule has R/W for 2011 and Construction for 2012
5. **U-4902 A**: construct a concrete median island from SR 2649 (Martin Luther King Parkway) to SR 1272 (New Center Drive). Contract has been awarded to Kinston Contractors.
Estimated Contract Completion Date Spring 2007
6. **U-4902 B**: construct a concrete median island from SR 1402 (Porter's Neck Road) to Colonial Drive (non-system road). Project is in the planning process.
7. **B-0682**: Bridge to Sunset Beach over the intercoastal waterway. **Letting date 7/17/2007**
8. **R-2245**: Second bridge to Oak Island over the intercoastal waterway. **Letting date 5/15/2007**
9. **R-4063**: widen SR 1472 (Village Road) from SR 35 (South Navassa Road) to SR 1438 (Lanvale Road) to multi-lanes. Right of Way 2012 and Construction 2013.

NCMA Brunswick County:

- **NC 211** We will be widening & resurfacing NC 211 from the entrance of St. James to NC 133 (Doscher Cutoff). The work will consist of resurfacing and some widening at the intersection with the entrance to St. James. The current approximate cost of the project is \$3,610,000.00. **Work Complete**

NCMA Pender County:

- **NC 210** from US 17 to NC 50 (going to the beach) will be widen and resurfaced. Pipe replacement work has been completed. **Work Complete**
- **NC 133** from US 117 to NC 210 will be widen and resurfaced. State forces to place pipe in the lateral ditch at certain areas. Pipe replacement work has been completed. Project has been let and the availability date is February 7, 2005. **Work Complete**
- **US 421** from NC 210 to Sampson County Line, resurface. Project has been let and the availability date is February 7, 2005. **Work Complete**

Brunswick County Resurfacing Projects:

- **US 17** the Shallotte Bypass and ramps. The Contractor will not be allowed to work on the weekends. The Contractor is limited to night work from Monday to Thursday. The availability date is January 5, 2005 and the completion date is November 1, 2005. **Work complete**
- **NC 133 Doshier Cutoff Road**, patch and resurface from NC 87 to NC 211. **Work complete**
- **SR 1342 (Big Macedonia Road)** patching and resurfacing from NC 211 to SR 1343 (Little Macedonia Road). **Work complete**
- **SR 1426 (Mt. Misery Road)** resurface from northwestern city limit to SR 1419 (Northwest Road). **Work complete on all these maps**

Also included in the same contract:

SR 1443 (Broadway Street) widen and resurface from SR 1434 (Main Street) to SR 1435 (Navassa Road).

SR 1423 (Vernon Road) resurface from SR 1426 (Mt. Misery Road) to SR 1422 (Blue Banks Loop).

SR 1190 (Oak Island Drive) resurface from 46th Street to 65th Street.

- **NC 87 (Maco Road)** patch and resurface from 0.3 miles north of US 17 to 0.03 miles south of US 74/76. The patching and intermediate course are complete.
Also included in the same contract: (Completion Date 8/1/2007)
SR 1167 (Persimmon Road) resurface from US 17 to NC 179.
SR 1120 (Sabbath Home Road) resurface from 0.06 miles northeast of NC 130 to SR 1122 (Varnamtown Road).
SR 1513 (Danford Road) patch and resurface from US 17 Business to east Bolivia City Limit.
SR 1245 (Maple Creek Road) patch and resurface from SR 1115 (Stone Chimney Road) to the end of state system.

New Hanover County:

- **NC 132** College Road from SR 1318 (Blue Clay Road) to the beginning of the divided highway. **Work complete**
- **Signing Project:** Division and Raleigh Signing are revisiting the signing for the Parkway and the Bypass. Authorization for funding has been approved. Sign structures are in design and we have ordered the signs. Let on August 8, 2006. Under construction Completion Summer 2007
- **US 74/NC 133:** installation of a signal "Mast Arm" pole on bridge #11 (Isabel Holmes Bridge) and connecting it to an existing signal system. **Letting May 8, 2007**
- **SR 1272 (New Center Drive):** widening the 4-lane portion of the roadway to 5-lanes. **Estimated completion date Summer 2007.**
- **US 421** mill and resurface from West Lake Shore Drive (non-system) to Greenfield Street (non-system).
Also included in the same contract: (Let Date 12/19/2006...Comp. Date 6/1/2007)
SR 2048 (Gordon Road) resurface from SR 1175 (Kerr Ave.) to SR 2698 (Netherlands Drive).
SR 1411 (Wrightsville Ave.) resurface from US 117 to West Huntington Road (non-system).
NC 210 mill patch from I-40 to 0.2 miles northwest of US 17. (Length 13.05 miles)
- **NC 132 (North College Road), SR 1322 (Murrayville Road), SR 1327 (Farley Street) and SR 1322 (Bavarian Drive):** roadway improvements for better flow of traffic. Public Workshop is scheduled for 4/17/2007. Work is scheduled to begin Summer 2007.

Pender County:

- **SR 1571 (Scott's Hill Loop Road)** widen and resurface from US 17 to US 17.
Work complete
- **NC 210** resurface from Bladen County line to SR 1101 (Point Caswell Road). Awarded to S. T. Wooten. **Revised Completion Date 5/15/2007**
- These are in the same contract: **Letting April 10, 2007**
 - **SR 1561 (Sloop Point Road)** widen to install a 1.5' paved shoulders from US 17 to SR 1563 (Sloop Point Loop Road). Also, widen 1.5' on SR 1563 from SR 1561 to the change in pavement at the school.
 - **SR 1520 (Shaw Highway)** construct short overlays from NC 210 to the Wildlife Boating Access Road.
 - **SR 1332 (Penderlea Highway)** mill patch at various spots from SR 1400 (Highsmith Road) to SR 1345 (Cora's Grove Road).
 - **US 17** mill patching at various spots from SR 1565 (Country Club Drive) north to the divided section of US 17.
 - **NC 11** mill patching at various spots from US 117 toward SR 1001 (Willard Road).