



NC Statewide Transportation Plan Update

WMPO Briefing

June 2011





2040 Plan Framework

2040 Plan reflects NCDOT
Mission and Goals that drive
the Department's delivery of
transportation infrastructure
and services

NCDOT

OUR MISSION

*Connecting people and places
in North Carolina - safely and
efficiently, with accountability
and environmental sensitivity*

OUR GOALS

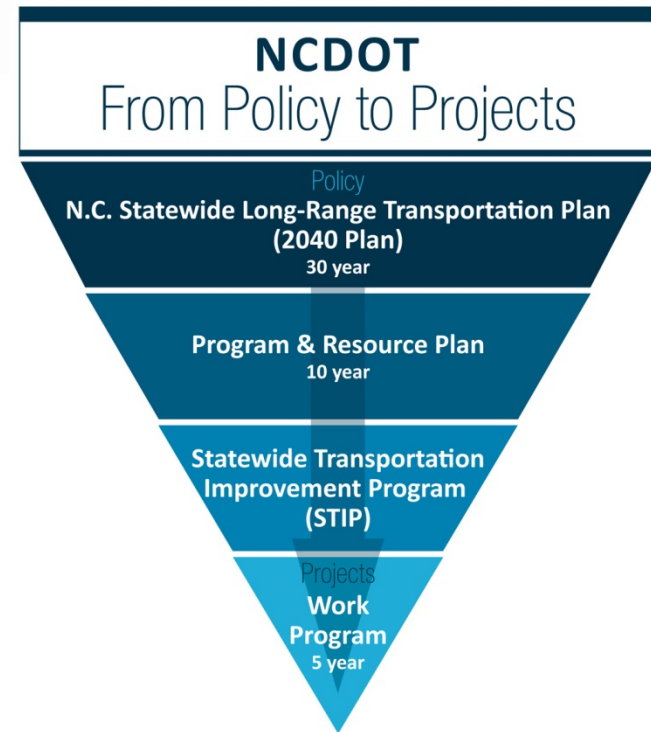
- Make our transportation network **safer**
- Make our transportation network move people and goods more **efficiently**
- Make our infrastructure **last longer**
- Make our organization a place that **works well**
- Make our organization **a great place to work**





2040 Plan Framework

- 2040 Plan is the top level of NCDOT's ongoing Policy-to-Projects process
- Is to be an umbrella for policy and program decisions
- Is a programmatic/policy-oriented document, not a projects-based plan
- Updated every 8 years, Finances updated every 2 years



NCDOT Policy to Projects Process



2040 Plan Framework

Nine study goals are driving 2040 Plan development; goals in three general areas:

- **Modal Effectiveness**
 - 1 – Update Estimates of modal needs to reflect defensible performance standards.
 - 2 – Expand the Strategic Highway Corridors concept to encompass a multimodal system.
 - 3 – Confirm that NCMIN (NC Multi-modal Investment Network) still reflects the state’s development and sustainability goals.

- **Financial Feasibility**
 - 4 – Clearly define the gap between transportation needs and anticipated revenues.
 - 5 – Establish a set of long-term revenue strategies.
 - 6 – Establish a strong rationale for long-term transportation investment strategies.

- **Program Delivery and Vision**
 - 7 – Provide cost-effective, wide-ranging opportunities for public input.
 - 8 – Establish a clear understanding of the long-term challenges and opportunities.
 - 9 – Identify improvements to the Department’s program delivery processes.



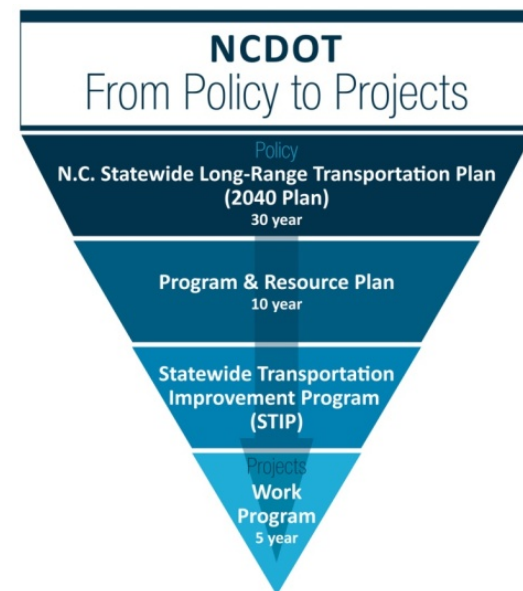


2040 Plan Framework

2040 Plan – Primary Plan

Content:

- Challenges & Opportunities
- Long-term modal infrastructure and service needs
- A sustainable financing plan
- Multimodal spending framework (Safety, Health, Mobility)
- Policy or procedure adjustment needed to meet program delivery targets





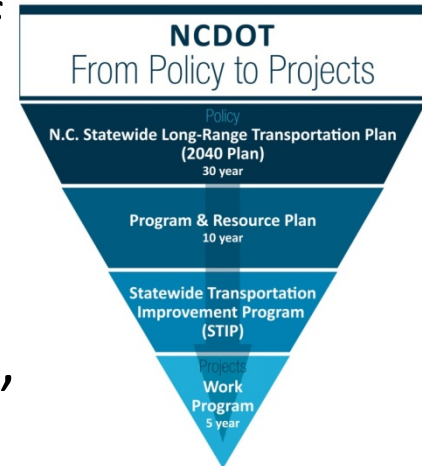
2040 Plan Framework

Relationship of 2040 Plan to MTPs (formerly LRTP) and CTPs:

- Statewide long-range transportation plans are to be developed in cooperation with the affected MPOs.
- States are encouraged to rely on information, studies, or analyses provided by MPOs for parts of the transportation system located in their urban area.

2040 Plan will set state policy and spending direction, identify policy and process changes;

Local/regional plans focus on projects





Schedule

- Needs, funding & processes formulation – summer/fall 2011
- Stakeholder & public review of draft plan – winter 2011 – 2012
- Board of Transportation adoption – June 2012

Task	Major Deliverables	Timing
Project Management	Project Management Plan, Study Schedule	Fall 2010
Public Involvement	Public Involvement Plan PI Delivery	Jan 2011 Mid-April Launch
Issues Identification/Plan Focus	Statewide Economic Activity Forecast Challenges & Opportunities Report	April-June 2011
Modal Elements Identification & Future System Performance /Backlog	Modal Systems Inventory Report Systems Performance Measures Report Modal System Needs Report	Summer, Fall 2011
Financial Analysis	Revenue Forecast and Financial Plan	Fall 2011
Investment Strategy	Program Investment Strategies	Fall 2011
Processes/Policies/Programs	Planning Processes, Policies & Programs Recommendations Report	Winter 2011
Plan Recommendations	Final Report (first draft) Adopted Final Plan	Winter 2011/2012 June 2012



Study Process

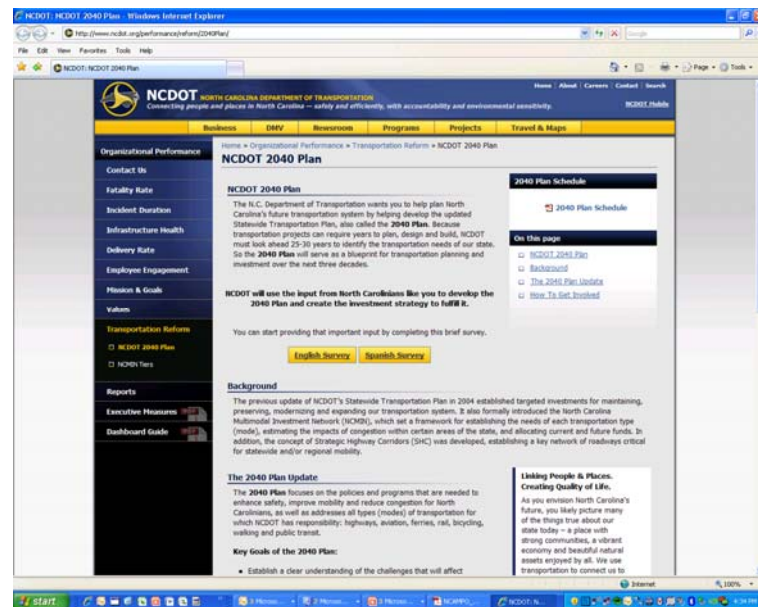
Local Government Participation

- Study Governance: MPOs and RPOs represented on Statewide Plan Steering Committee (NCDOT)
- Study guidance: Local officials represented on Statewide Stakeholders Group:
 - Association of County Commissioners
 - League of Municipalities/Metro Mayors Council
- ***Study input: Opportunity to comment on study approach and comment on study documents***

Study Process

A multi-faceted public Involvement Plan launched in April 2011

- Agency Coordination Group
- Statewide Stakeholder Group
- **MPO & RPO coordination**
- Tribal consultation
- Regional contacts & Speakers' Bureau
- Technology /social media tools
- Initial survey, web site, video



<http://www.ncdot.org/performance/reform/2040Plan/>

Survey open until June 30th, 2011

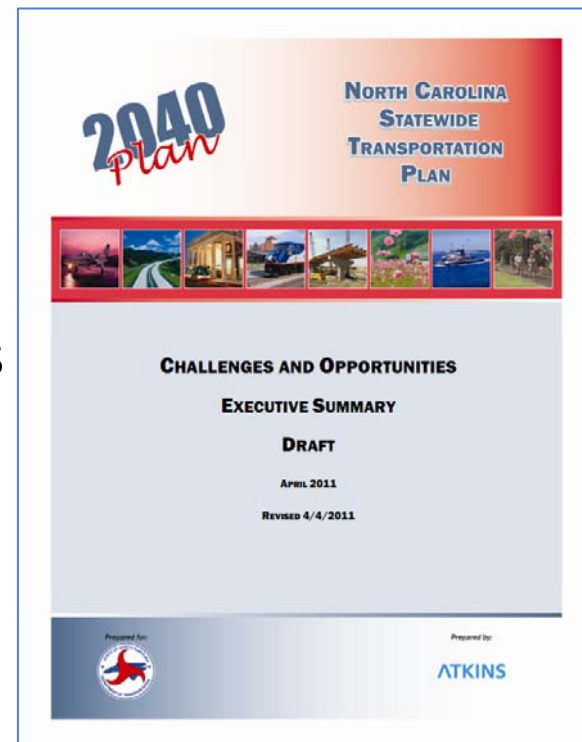
NC Statewide Transportation Plan





Challenges & Opportunities

- C&O Objective: the first building block for the 2040 Plan, to set platform for Plan development
- Content
 1. NCDOT Transportation Reform Process (Policy to Projects)
 2. Snapshot of NC transportation system
 3. Summary of driving economic trends
 4. Key transportation challenges
 5. Transportation opportunities





Challenges & Opportunities

NC future: *expected trends that will impact transportation infrastructure and services*

- 50% increase in population by 2040, to 13.5 million
- Increasing urbanization - 6 major metro areas will grow to 74% of state population.
- Aging population - residents over 65 years of age will increase from 13 to 18% of the state's population, doubling to 2.4 million
- Changing employment - ongoing shift from manufacturing to service-based economy (32% drop in manufacturing); 5.7 million workers



Transportation Challenges

Primary transportation challenges:

- Growing and changing personal mobility needs
- Preservation of our existing transportation infrastructure
- Growing and changing freight movement and logistics needs
- Financial sustainability
- Environmental sustainability



Transportation Opportunities

Transportation opportunities: *situations that contribute to ever-greater economic opportunities, financial sustainability, and environmental stewardship*

- To improve personal mobility with new technology
- To improve commercial/freight mobility by making strategic investments
- To use expanded, more flexible funding initiatives to make “smart” investment decisions
- To benefit from enhanced partnerships
- To create environmentally, economically, and socially sustainable transportation systems



Discussion: Critical Long-term Issues

The 2040 Plan will address each of these areas.

- Spending priorities (safety, health/modernization, mobility)
- Spending priorities (modes)
- Refinement of NC Multimodal Investment Network
- Expected system performance – how good is good enough?



Next Steps

- Refine Challenges & Opportunities
- Continue public involvement program
- Update modal needs and system performance
- Examine financial resources
- Examine plans and policies



Thank you

For more information or to submit additional comments:

Tyler Bray, PE, NCDOT PM, tbray@ncdot.gov

Mark Boggs, Atkins, mark.boggs@atkinsglobal.com