



WILMINGTON URBAN AREA Metropolitan Planning Organization

P.O. Box 1810
Wilmington, North Carolina 28402
910.342.2781 910.341.7801 FAX

The mission of the Wilmington MPO is to develop and implement a comprehensive multi-modal transportation plan that supports the existing and future mobility needs and economic vitality of the Wilmington Urban Area. This shall be accomplished by protecting the environment, safe guarding the social equity, improving the quality of life for the citizens of the community, improving the local economy and providing for the safe and efficient mobility throughout the region. This is achieved through the long range transportation planning process which includes a comprehensive, continuous and cooperative approach from citizens and participating members.

Members:

City of
WILMINGTON
Lead Planning Agency

Town of
CAROLINA BEACH

Town of
KURE BEACH

Town of
WRIGHTSVILLE BEACH

NEW HANOVER
County

Town of
BELVILLE

Town of
LELAND

Town of
NAVASSA

BRUNSWICK
County

PENDER
County

CAPE FEAR
Public Transportation
Authority

North Carolina
BOARD OF
TRANSPORTATION

Technical Coordinating Committee Meeting Agenda

TO: Technical Coordinating Committee Members
FROM: Mike Kozlosky, Executive Director
DATE: August 10, 2012
SUBJECT: August 15, 2012 meeting

A meeting of the WMPO Technical Coordinating Committee will be held on Wednesday, August 15th at 10:00 am. The meeting will be held in the Traffic Conference Room on the 4th Floor of 305 Chestnut Street in downtown Wilmington.

The following is the agenda for the meeting:

- 1) Call to Order
- 2) Approval of Minutes:
 - a. 6/13/12
- 3) New Business
 - a. Opening of the 30-day Public Comment Period for STIP/MTIP Amendments
 - b. Resolution Adopting STIP/MTIP Amendments
 - c. Resolution Adopting the Smoothed Urbanized Area Boundary
 - d. Resolution Supporting Twin-Trailers in New Hanover County on US 17 (John J. Burney Freeway) between US 17 Business (Market Street and I-40; US 17 (also I-140) (John J. Burney Freeway) between I-40 and US 421 (Francis Peter Fensel Highway); US 17 (also US 421) (Francis Peter Fensel Highway) between I-140/US17 (John J. Burney Freeway) and US 74/NC 133; US 17 (Also US 74, US 421 and NC 133) between US 74/NC 133 and Brunswick County Line; in Brunswick County on US 17 (also (US 74 and NC 133) between the New Hanover County Line and US 74/76 (Andrew Jackson Highway)
 - e. Resolution Opposing Twin-Trailers on Market Street between Military Cutoff Road and the Wilmington Bypass and Requesting NCDOT Conduct Additional Public Hearings for Input on this Designation
 - f. Resolution Supporting the Application of Airlie Road for a Scenic Byway Designation
 - g. Resolution Requesting NCDOT Install Crosswalks on All Four Legs of College Road/Oleander Drive
- 4) Discussion
 - a. Wilmington MPO Boundary Expansion
 - b. Wilmington MPO Transportation Management Designation
 - c. MAP-21 Transportation Authorization Bill
- 5) Updates

- a. City of Wilmington/Wilmington MPO
- b. Cape Fear Public Transportation Authority
- c. NCDOT
- 6) Announcements
 - a. Wilmington MPO Bike/Ped meeting-August 28th
- 7) Next meeting –September 26, 2012

Attachments:

- Minutes 6/13/12 meeting
- Proposed STIP/MTIP Amendments- August
- STIP/MTIP Amendments- May
- STIP/MTIP Amendments- June
- Resolution Adopting STIP/MTIP Amendments
- Map of Smoothed Urbanized Area Boundary
- Resolution Adopting the Smoothed Urbanized Area Boundary
- Map Demonstrating the Proposed Twin-Trailer Routes on US 17 in New Hanover and Brunswick Counties
- Letter from NCDOT Requesting Input on the Proposed Designation of Twin-Trailer Routes on US 17 in New Hanover and Brunswick Counties
- Resolution Supporting Twin-Trailers in New Hanover County on US 17 (John J. Burney Freeway) between US 17 Business (Market Street and I-40; US 17 (also I-140) (John J. Burney Freeway) between I-40 and US 421 (Francis Peter Fensel Highway); US 17 (also US 421) (Francis Peter Fensel Highway) between I-140/US17 (John J. Burney Freeway) and US 74/NC 133; US 17 (Also US 74, US 421 and NC 133) between US 74/NC 133 and Brunswick County Line; in Brunswick County on US 17 (also (US 74 and NC 133) between the New Hanover County Line and US 74/76 (Andrew Jackson Highway)
- Map Demonstrating A Proposed Twin-Trailer Route on Market Street between Military Cutoff Road and the Wilmington Bypass
- Letter from NCDOT Requesting Input on the Proposed Designation of Twin-Trailer Routes on Market Street between Military Cutoff Road and the Wilmington Bypass
- Resolution Opposing Twin-Trailers on Market Street between Military Cutoff Road and the Wilmington Bypass and Requesting NCDOT Conduct Additional Public Hearings for Input on this Designation
- Resolution Supporting the Application of Airlie Road for a Scenic Byway Designation
- Map of the intersection of College Road/Oleander Drive
- Resolution Requesting NCDOT Install Crosswalks on All Four Legs of College Road/Oleander Drive
- Maps indicating Possible MPO Planning Area Boundary Expansions
- AMPO's MAP-21 Presentation
- City of Wilmington/Wilmington MPO Project Update (August 2012)
- NCDOT Project Update

**Wilmington Urban Area
Technical Coordinating Committee
Meeting Notes for June 13, 2012**

Members Present:

Mike Kozlosky, City of Wilmington
Robert Waring, Town of Leland
Pat Walsh, Town of Belville
Karyn Crichton, New Hanover County
Sean Ryan, Town of Navassa
Shane York, NCDOT
Karen Fussell, NCDOT
Adrienne Harrington, TDM Coordinator
Don Eggert, Cape Fear COG
Helen Bunch, Brunswick County
Albert Eby, CFPTA

1. Call to Order

Mr. Kozlosky called the meeting to order at 10:04 am.

2. Approval of Minutes

The minutes from the May 16, 2012 meeting were approved unanimously.

3. New Business

a. Resolution Adopting the Agreement between the Wilmington MPO and the Lower Cape Fear Sustainable Communities Consortium

Ms. Rashid told members that the resolution adopting the agreement between the Wilmington MPO and the Lower Cape Fear Sustainable Communities Consortium defines the responsibilities, requirements and commitments of each member organization. HUD requires that all members of the Consortium adopt the agreement.

Ms. Crichton made the motion to support Adopting the Agreement between the Wilmington MPO and the Lower Cape Fear Sustainable Communities Consortium and forward to the TAC for consideration. Mr. Ryan seconded the motion and it carried unanimously.

b. Resolution Adopting the STIP/MTIP Amendment Process

Mr. Kozlosky told members the STIP/MTIP Amendment Process clarifies how changes may be made to the State Transportation Improvement Program (STIP) and Metropolitan Transportation Improvement Program (MTIP) by either administrative modification or formal amendment. He noted that an administrative modification identifies that the MPO will notify the Transportation Advisory Committee of STIP/MTIP administrative modifications, however no action is required by the TAC. A formal amendment requires public review and comment, demonstration of fiscal constraint, or a local transportation conformity determination. Mr. Kozlosky stated that the Board of Transportation adopted the policy.

Mr. Eby made the motion to support Adopting the STIP/MTIP Amendment Process and forward to the TAC for consideration. Ms. Bunch seconded the motion and it carried unanimously.

c. Resolution Requesting Funding for the Miracle Field

Mr. Kozlosky told members that the Miracle League is working to develop a 100% accessible athletic facility at Olsen Park for those with disabilities. It is a local effort that will provide dedicated space for sports, promoting physical activities and camaraderie for children and adults with disabilities. The Miracle League is requesting help to construct an internal road that will provide for drop-off and pick-up

for field users. The resolution is asking the NC General Assembly or NCDOT to help fund construction of this road.

Mr. Waring made the motion to support the Resolution Requesting Funding for the Miracle Field and forward to the TAC for consideration. Ms. Harrington seconded the motion and it carried unanimously.

d. Resolution Supporting Amtrak Service to Wilmington

Mr. Kozlosky told members Amtrak approached staff regarding the opportunity to bring "rubber wheel" service to Wilmington that will link with their facility in Wilson, NC. They are interested in making Wilmington a destination-city and are asking for a resolution supporting this service to the community. The resolution does not provide the logistics for the service, it just identifies community support.

Ms. Bunch made the motion to supporting Amtrak Service to Wilmington and forward to the TAC for consideration. Ms. Harrington seconded the motion and it carried unanimously.

4. Discussion

a. Wilmington MPO Boundary Expansion

Mr. Kozlosky told members he presented three different scenarios depicting options for the WMPO boundary expansion to the TAC at their last meeting and they expressed the desire to study the options and discuss it at the next meeting.

Mr. Kozlosky told TCC member there has been some discussion about expansion of the Myrtle Beach MPO boundary area to the north to encompass the towns of Shallotte and Calabash. He said based of his information there are three different scenarios considered in their boundary expansion.

Mr. Eggert told members one of the scenarios being considered by the Myrtle Beach MPO is to take in Ocean Isle, Sunset Beach, Carolina Shores and the surrounding part of Brunswick County. The second scenario discussed was expanding to include Holden Beach and Varnamtown and the third option included Southport, St. James, Caswell Beach and Ocean Isle. Mr. Kozlosky told member he may take maps depicting boundary expansion to the south to the next TAC meeting.

5. Updates

Project updates for the Wilmington MPO/City of Wilmington and NCDOT are included in the agenda packet.

6. Announcements

7. Adjournment

With no further items, the meeting was adjourned at 10:40 am.

**THE ABOVE MINUTES ARE NOT A VERBATIM RECORD OF THE PROCEEDINGS.
THE ENTIRE PROCEEDINGS ARE RECORDED ON A COMPACT DISC AS PART OF THIS RECORD.**

PROPOSED REVISIONS TO 2012-2020 STIP

PROGRAM

STIP/MTIP ADDITIONS

DIVISION 3

*EB-5544	GARY SHELL CROSS-CITY TRAIL. WILMINGTON.	\$250,000	(STPEB)
New Hanover	CONSTRUCT BICYCLE AND PEDESTRIAN	\$600,000	(O)
	ACCOMODATIONS ON SOUTH 17TH STREET,	<u>\$487,000</u>	(C)
	WALTMORE ROAD, AND BETHEL ROAD.	\$1,337,500	
	<u>ADD CONSTRUCTION IN FY 13 NOT PREVIOUSLY PROGRAMMED.</u>		
*EB-5543	SR 1403 (MIDDLE SOUND LOOP ROAD)	RIGHT-OF-WAY	FY 2013 - \$16,000 (DP)
New Hanover	OGDEN ELEMENTARY SCHOOL TO SR 1986		FY 2013 - \$4,000 (C)
	(OYSTER DRIVE)	CONSTRUCTION	FY 2014 -\$165,000 (DP)
	CONSTRUCT MULTI-USE PATH.		FY 2014 - <u>\$41,000</u> (C)
	<u>ADD RIGHT OF WAY IN FY 13 AND</u>		\$226,000
	<u>CONSTRUCTION IN FY 14 NOT PREVIOUSLY</u>		
	<u>PROGRAMMED USING TCSP FEDERAL</u>		
	<u>DISCRETIONARY GRANT.</u>		
Public Transportation			
*TD-4942	Facility- Maintenance and Ops Center- Design,	\$6,000,000	FBUS US (49 CFR 5309)
New Hanover	Engineer and Construct	\$4,093,095	FUZ US (49 CFR 5307)
		\$1,121,455	FBUS State
		<u>\$1,121,455</u>	FBUS Local
		\$12,336,005	

HIGHWAY PROGRAM

STIP ADDITIONS

STATEWIDE

* K-5500A	COASTAL REGION REST AREA RENOVATIONS.	construction	FY13	\$426,000	(S)
STATEWIDE	REPLACE LIGHTING WITH EFFICIENT LOW MAINTENANCE LED FIXTURES.			\$426,000	
	<u>ADD CONSTRUCTION IN FY 13 NOT PREVIOUSLY PROGRAMMED.</u>				

* K-5500B	PIEDMONT REGION REST AREA RENOVATIONS.	construction	FY13	\$458,000	(S)
STATEWIDE	REPLACE LIGHTING WITH EFFICIENT LOW MAINTENANCE LED FIXTURES.			\$458,000	
	<u>ADD CONSTRUCTION IN FY 13 NOT PREVIOUSLY PROGRAMMED.</u>				

* K-5500C	MOUNTAIN REGION REST AREA RENOVATIONS.	construction	FY13	\$406,000	(S)
STATEWIDE	REPLACE LIGHTING WITH EFFICIENT LOW MAINTENANCE LED FIXTURES.			\$406,000	
	<u>ADD CONSTRUCTION IN FY 13 NOT PREVIOUSLY PROGRAMMED.</u>				

* M-0451	STATEWIDE LANDSCAPE PLANS FOR STIP CONSTRUCTION PROJECTS.	engineering	FY12	\$70,000	(S)
STATEWIDE			FY13	\$70,000	(S)
			FY14	\$70,000	(S)
			FY15	\$70,000	(S)
			FY16	\$70,000	(S)
			FY17	\$70,000	(S)
			FY18	\$70,000	(S)
				\$490,000	
	<u>ADD PRELIMINARY ENGINEERING IN FY 12 THROUGH FY 18.</u>				

STIP MODIFICATIONS

DIVISION 3

W-5132	US 76 (OLEANDER DRIVE), US 117/NC 132 (COLLEGE ROAD). CONSTRUCT A RIGHT TURN LANE ON US 76 WEST-BOUND ONTO US 117/NC 132.	construction	FY16	\$90,000	(HES)
NEW HANOVER				\$90,000	
	<u>DELAY CONSTRUCTION FROM FY 12 TO FY 13 TO ALLOW ADDITIONAL TIME TO ADDRESS UTILITY ISSUES.</u>				

* INDICATES FEDERAL AMENDMENT

Thursday, May 03, 2012

HIGHWAY PROGRAM

STIP MODIFICATIONS

DIVISION 3

* W-5203	VARIOUS, DIVISION 3 RUMBLE STRIPS, GUARDRAIL,	right-of-way	FY12	\$50,000	(HSIP)
BRUNSWICK	SAFETY AND LIGHTING IMPROVEMENTS AT SELECTED		FY13	\$100,000	(HSIP)
NEW HANOVER	LOCATIONS.		FY14	\$100,000	(HSIP)
DUPLIN	<u>ADD RIGHT OF WAY AND CONSTRUCTION IN FY 13</u>		FY15	\$100,000	(HSIP)
ONSLOW	<u>THROUGH FY 15 NOT PREVIOUSLY PROGRAMMED.</u>	construction	FY12	\$100,000	(HSIP)
SAMPSON			FY13	\$600,000	(HSIP)
PENDER			FY14	\$600,000	(HSIP)
			FY15	\$600,000	(HSIP)
				<u>\$2,250,000</u>	

* INDICATES FEDERAL AMENDMENT

Thursday, May 03, 2012

PROPOSED REVISIONS TO 2012-2018 STIP

Public Transportation PROGRAM

STIP/MTIP AMENDMENT

DIVISION 3

TD-5265	City of Wilmington New Freedom Project –	\$24,000	Federal
	install mid-block crosswalk and pedestrian	\$ 3,000	State
	refuge island on a roadway that divides a	\$ 3,000	Local
	public housing project from a transit stop.		

**WILMINGTON URBAN AREA METROPOLITAN PLANNING ORGANIZATION
TRANSPORTATION ADVISORY COMMITTEE**

**RESOLUTION SUPPORTING THE AMENDMENT OF THE
2012-2018 STATE /METROPOLITAN TRANSPORTATION IMPROVEMENT PROGRAMS**

WHEREAS, the Wilmington Urban Area Metropolitan Planning Organization provides transportation planning services for the City of Wilmington, Town of Carolina Beach, Town of Kure Beach, Town of Wrightsville Beach, Town of Belville, Town of Leland, Town of Navassa, New Hanover County, Brunswick County, Pender County, Cape Fear Public Transportation Authority and the North Carolina Board of Transportation; and

WHEREAS, the Transportation Advisory Committee has found that the Wilmington Urban Area Metropolitan Planning Organization is conducting transportation planning in a continuous, cooperative, and comprehensive manner; and

WHEREAS, the North Carolina Board of Transportation adopted the 2012-2018 State Transportation Improvement Program on July 7, 2011 and the Wilmington Metropolitan Planning Organization adopted the Statewide/Metropolitan Transportation Improvement Program on August 11, 2011; and

WHEREAS, the Wilmington MPO desires to amend the State/Metropolitan Transportation Improvement Program for the installation of the mid-block crosswalk and pedestrian improvements on Front Street and statewide initiatives; and

WHEREAS, the Wilmington Metropolitan Planning Organization has conducted a 30-day public comment period to receive citizen input on these transportation projects.

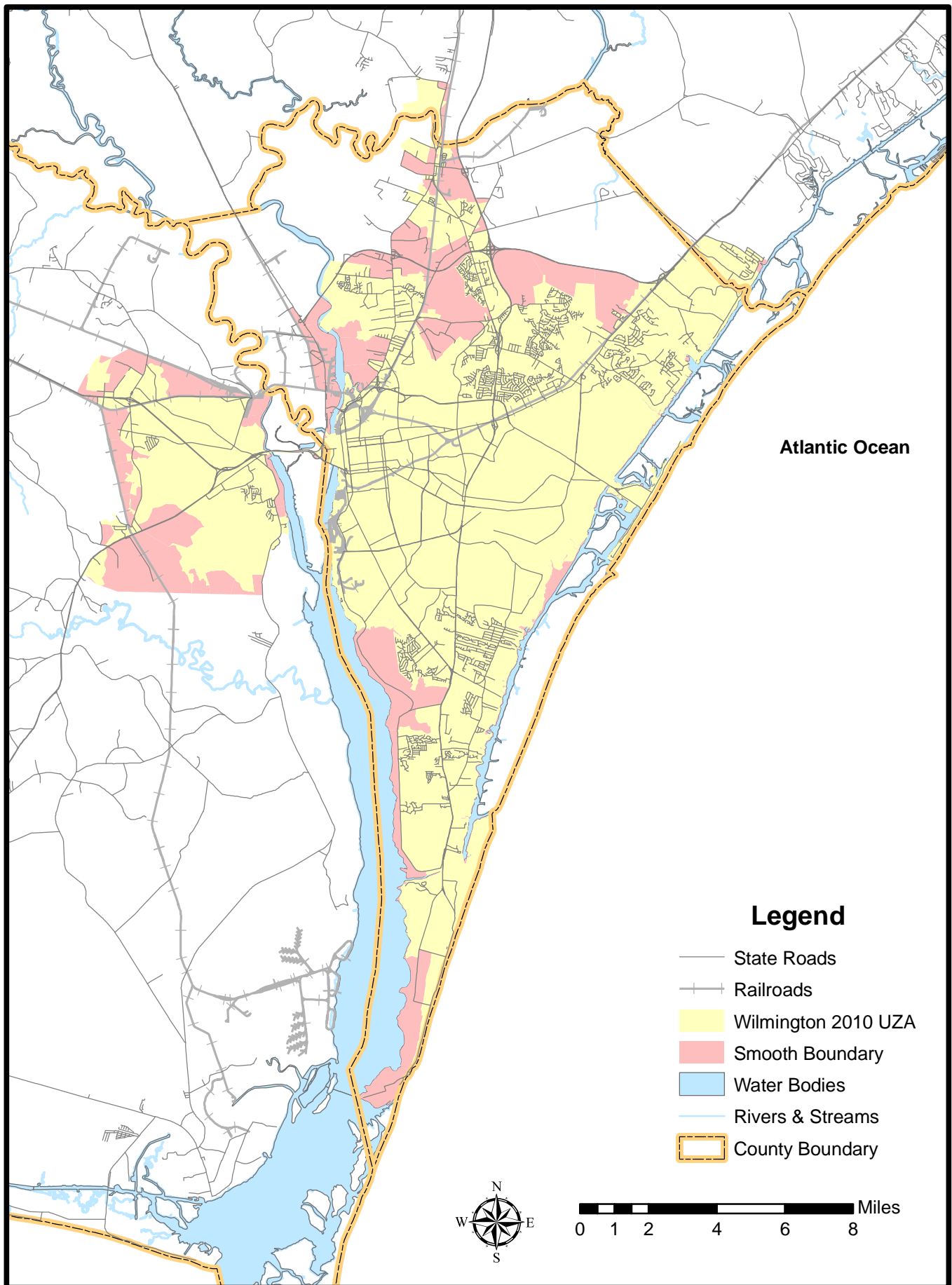
NOW THEREFORE, be it resolved by the Wilmington Urban Area Metropolitan Planning Organization's Transportation Advisory Committee supports amending the 2012-2018 State/Metropolitan Transportation Improvement Programs to fund the installation of the mid-block crosswalk and pedestrian improvements on Front Street and statewide initiatives.

ADOPTED at a regular meeting of the Wilmington Urban Area Metropolitan Planning Organization Transportation Advisory Committee on August 29, 2012.

Laura Padgett, Chair
Transportation Advisory Committee

Mike Kozlosky, Secretary

Wilmington MPO UZA with Smooth Boundary



**WILMINGTON URBAN AREA METROPOLITAN PLANNING ORGANIZATION
TRANSPORTATION ADVISORY COMMITTEE**

**RESOLUTION ADOPTING THE SMOOTHED URBANIZED AREA BOUNDARY FOR THE
WILMINGTON MPO**

WHEREAS, the Wilmington Urban Area Metropolitan Planning Organization provides transportation planning services for the City of Wilmington, Town of Carolina Beach, Town of Kure Beach, Town of Wrightsville Beach, Town of Belville, Town of Leland, Town of Navassa, New Hanover County, Brunswick County, Pender County, Cape Fear Public Transportation Authority and the North Carolina Board of Transportation; and

WHEREAS, on March 26, 2012 the US Census Bureau released the US Census designations for Urbanized Areas and Urban Clusters; and

WHEREAS, the Urbanized Area Boundary serves as the boundary that designates the areas that are considered Urbanized Areas per the US Census definition and are utilized to determine funding for the Wilmington MPO; and

WHEREAS, the Federal Highway Administration requires a smoothed Urbanized Area Boundary to eliminate irregularities in the boundary and maintain logical control points.

NOW THEREFORE, be it resolved that the Wilmington Metropolitan Planning Organization's Transportation Advisory Committee hereby adopts the smoothed Urbanized Area Boundary for the Wilmington MPO.

ADOPTED at a regular meeting of the Wilmington Urban Area Metropolitan Planning Organization Transportation Advisory Committee on August 29, 2012.

Laura Padgett., Chair
Transportation Advisory Committee

Mike Kozlosky, Secretary





STATE OF NORTH CAROLINA
DEPARTMENT OF TRANSPORTATION

BEVERLY EAVES PERDUE
GOVERNOR

EUGENE A. CONTI, JR.
SECRETARY

June 7, 2012

In Reply Refer To
Application D-12-2

Mr. Mike Kozlosky, Executive Director
Wilmington Urban Area - MPO
305 Chestnut Street, Floor 4
Wilmington, NC 28401

Dear Mr. Kozlosky:

The North Carolina Department of Transportation is in the process of designating the following route for use by trucks with twin trailers:

New Hanover County: US 17 (John Jay Burney Jr. Freeway) between US 17 Business (Market Street) and I-40; US 17 (also I-140) (John Jay Burney Jr. Freeway) between I-40 and US 421 (Francis Peter Fensel Highway); US 17 (also US 421) (Francis Peter Fensel Highway) between I-140/US 17 (John Jay Burney Jr. Freeway) and US 74/NC 133; US 17(also US 74, US 421 and NC 133) between US 74/NC133 and Brunswick County Line. Brunswick County: US 17 (also US 74 and NC 133) between New Hanover County Line and US 74/76 (Andrew Jackson Highway).

If the Department designates this route for use by these vehicles, public hearings, or the opportunity for such, will be provided in each of the affected counties. The North Carolina Board of Transportation will render a final decision on designation at a later date.

Please provide any comments you may have by September 6, 2012. If you have any questions or need additional information, you may contact me at (919) 773-2893 or lavery@ncdot.gov.

Sincerely,

Lisa N. Avery
Traffic Safety Project Engineer

LNA:lma

cc: M. Alford, Board of Transportation Member
Eugene A. Conti, Jr., Secretary of Transportation
T. R. Gibson, P.E., State Highway Administrator
J. Nance, P.E., Chief Engineer - Operations
J. K. Lacy, P.E., State Traffic Engineer
K. E. Fussell, P.E., Division Three Engineer
D. C. Kimes, P.E., Division Three Operations Engineer
T. M. Hopkins, P.E., State Traffic Safety Engineer
P. H. Daughtry, III, P.E., CPM, Eastern Regional Field Operations Engineer
R. C. Gray, III, P.E., Cape Fear Regional Traffic Engineer
K. E. Hite, P.E., Division Three Traffic Engineer
B. Mayhew, P.E., Traffic Safety Systems Engineer
S. Lowry, P.E., Highway Safety Improvement Program Engineer

**WILMINGTON URBAN AREA METROPOLITAN PLANNING ORGANIZATION
TRANSPORTATION ADVISORY COMMITTEE**

**RESOLUTION SUPPORTING THE USE OF TWIN-TRAILER TRUCKS IN NEW HANOVER COUNTY
ON US 17 (JOHN J. BURNEY FREEWAY) BETWEEN US 17 BUSINESS (MARKET STREET AND I-40;
US 17 (ALSO I-140) (JOHN J. BURNEY FREEWAY) BETWEEN I-40 AND US 421 (FRANCIS PETER
FENSEL HIGHWAY); US 17 (ALSO US 421) (FRANCIS PETER FENSEL HIGHWAY) BETWEEN I-
140/US17 (JOHN J. BURNEY FREEWAY) AND US 74/NC 133; US 17 (ALSO US 74, US 421 AND NC 133)
BETWEEN US 74/NC 133 AND BRUNSWICK COUNTY LINE; IN BRUNSWICK COUNTY ON US 17
(ALSO (US 74 AND NC 133) BETWEEN THE NEW HANOVER COUNTY LINE AND US 74/76 (ANDREW
JACKSON HIGHWAY)**

WHEREAS, the Wilmington Urban Area Metropolitan Planning Organization provides transportation planning services for the City of Wilmington, Town of Carolina Beach, Town of Kure Beach, Town of Wrightsville Beach, Town of Belville, Town of Leland, Town of Navassa, New Hanover County, Brunswick County, Pender County, Cape Fear Public Transportation Authority and the North Carolina Board of Transportation; and

WHEREAS, the North Carolina Department of Transportation is in the process of designating. US 17 (John J. Burney Freeway) between US 17 Business (Market Street and I-40; US 17 (also I-140) (John J. Burney Freeway) between I-40 and US 421 (Francis Peter Fensel Highway); US 17 (also US 421) (Francis Peter Fensel Highway) between I-140/US17 (John J. Burney Freeway) and US 74/NC 133; US 17 (Also US 74, US 421 and NC 133) between US 74/NC 133 and Brunswick County Line; in Brunswick County on US 17 (also (US 74 and NC 133) between the New Hanover County Line and US 74/76 (Andrew Jackson Highway) ; and

WHEREAS, the North Carolina Department of Transportation has requested comments on this designation by September 6, 2012; and

WHEREAS, these segments of roadway are controlled access facilities or facilities with limited driveway access; and

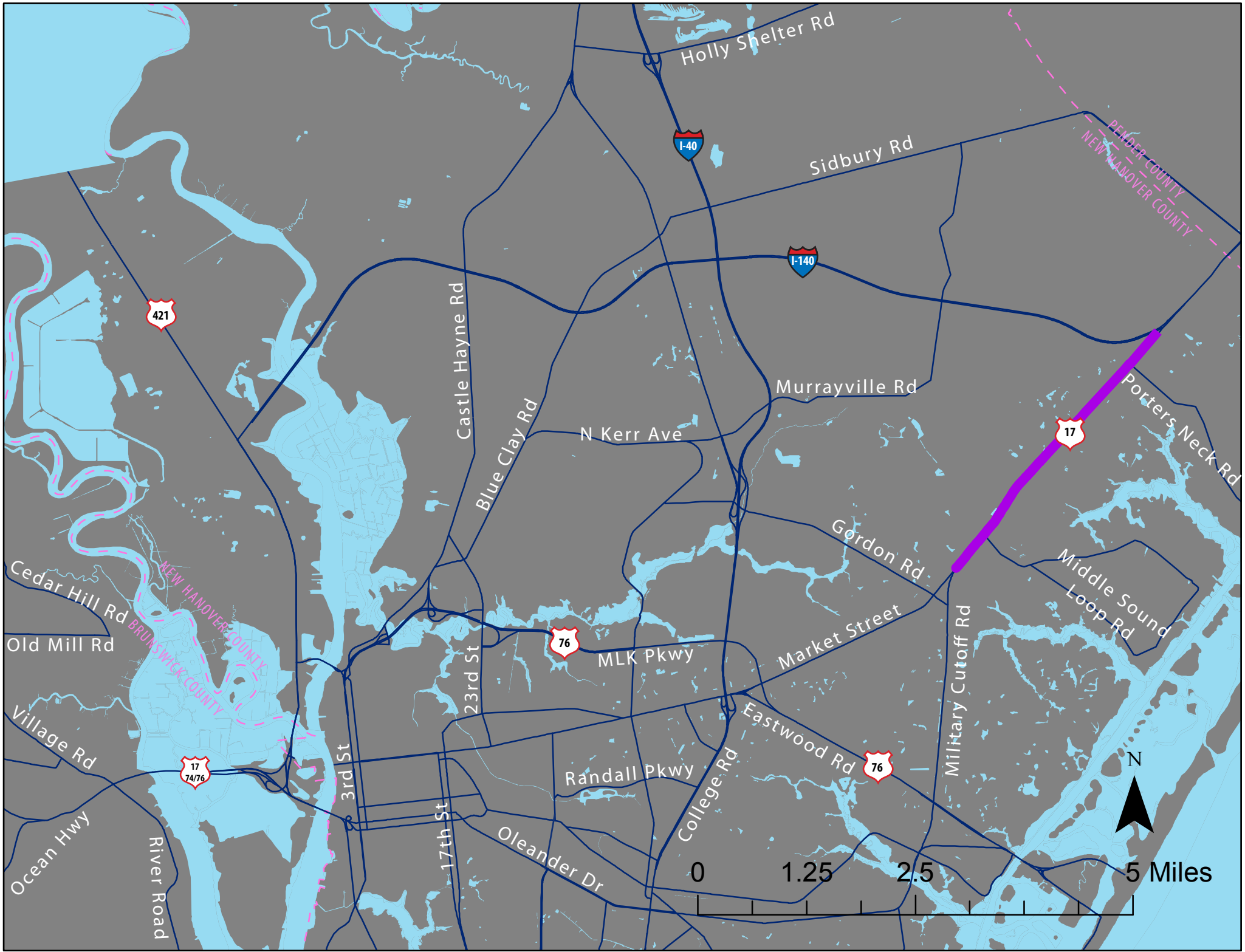
WHEREAS, these segments provide a bypass around the City of Wilmington in an effort to improve mobility throughout the region..

NOW THEREFORE, be it resolved that the Wilmington Metropolitan Planning Organization's Transportation Advisory Committee hereby supports the North Carolina Department of Transportation's designation of US 17 (John J. Burney Freeway) between US 17 Business (Market Street and I-40; US 17 (also I-140) (John J. Burney Freeway) between I-40 and US 421 (Francis Peter Fensel Highway); US 17 (also US 421) (Francis Peter Fensel Highway) between I-140/US17 (John J. Burney Freeway) and US 74/NC 133; US 17 (Also US 74, US 421 and NC 133) between US 74/NC 133 and Brunswick County Line; in Brunswick County on US 17 (also (US 74 and NC 133) between the New Hanover County Line and US 74/76 (Andrew Jackson Highway)for the use of trucks with twin trailers.

ADOPTED at a regular meeting of the Wilmington Urban Area Metropolitan Planning Organization Transportation Advisory Committee on August 29, 2012.

Laura Padgett., Chair
Transportation Advisory Committee

Mike Kozlosky, Secretary





STATE OF NORTH CAROLINA
DEPARTMENT OF TRANSPORTATION

BEVERLY EAVES PERDUE
GOVERNOR

EUGENE A. CONTI, JR.
SECRETARY

June 7, 2012

In Reply Refer To
Application D-12-3

Mr. Mike Kozlosky, Executive Director
Wilmington Urban Area - MPO
305 Chestnut Street, Floor 4
Wilmington, NC 28401

Dear Mr. Kozlosky:

The North Carolina Department of Transportation is in the process of designating US 17 Business (Market Street) between SR 1409 (Military Cut-Off Road) and US 17 (John Jay Burney Jr. Freeway) in New Hanover County for use by trucks with twin trailers. If the Department designates this route for use by these vehicles, public hearings, or the opportunity for such, will be provided in each of the affected counties. The North Carolina Board of Transportation will render a final decision on designation at a later date.

Please provide any comments you may have by September 6, 2012. If you have any questions or need additional information, you may contact me at (919) 773-2893 or lavery@ncdot.gov.

Sincerely,

A handwritten signature in black ink, appearing to read "Lisa N. Avery".

Lisa N. Avery
Traffic Safety Project Engineer

LNA:lma

cc: M. Alford, Board of Transportation Member
Eugene A. Conti, Jr., Secretary of Transportation
T. R. Gibson, P.E., State Highway Administrator
J. Nance, P.E., Chief Engineer - Operations
J. K. Lacy, P.E., State Traffic Engineer
K. E. Fussell, P.E., Division Three Engineer
D. C. Kimes, P.E., Division Three Operations Engineer
T. M. Hopkins, P.E., State Traffic Safety Engineer
P. H. Daughtry, III, P.E., CPM, Eastern Regional Field Operations Engineer
R. C. Gray, III, P.E., Cape Fear Regional Traffic Engineer
K. E. Hite, P.E., Division Three Traffic Engineer
B. Mayhew, P.E., Traffic Safety Systems Engineer
S. Lowry, P.E., Highway Safety Improvement Program Engineer

**WILMINGTON URBAN AREA METROPOLITAN PLANNING ORGANIZATION
TRANSPORTATION ADVISORY COMMITTEE**

RESOLUTION OPPOSING THE USE OF TWIN-TRAILER TRUCKS ON US 17 BUSINESS (MARKET STREET) BETWEEN MILITARY CUTOFF ROAD AND US 17 (JOHN J. BURNEY JR. FREEWAY)

WHEREAS, the Wilmington Urban Area Metropolitan Planning Organization provides transportation planning services for the City of Wilmington, Town of Carolina Beach, Town of Kure Beach, Town of Wrightsville Beach, Town of Belville, Town of Leland, Town of Navassa, New Hanover County, Brunswick County, Pender County, Cape Fear Public Transportation Authority and the North Carolina Board of Transportation; and

WHEREAS, the North Carolina Department of Transportation is in the process of designating US 17 Business (Market Street) between SR 1409 (Military Cutoff Road) and US 17 (John Jay Burney Jr. Freeway) in New Hanover County for use by trucks with twin trailers.; and

WHEREAS, the North Carolina Department of Transportation has requested comments on this designation by September 6, 2012; and

WHEREAS, the 2011 Wilmington Metropolitan Planning Organization's traffic counts on Market Street range from 34,400 to 50,780 vehicles per day; and

WHEREAS, the Market Street Corridor Study corridor studied the crashes for a three-year period from July 2005 to June 2008 along the Market Street corridor from Colonial Drive to Porters Neck Road and indicates that Market Street, in the section studied, had a thirty percent higher occurrence of crashes than comparable corridors; and

WHEREAS, the Wilmington MPO has concerns regarding traffic volumes and crashes along the Market Street corridor between SR 1409 (Military Cutoff Road) and US 17 (John Jay Burney Jr. Freeway) in New Hanover County and the use of trucks with twin trailers could exacerbate the situation on Market Street.

NOW THEREFORE, be it resolved that the Wilmington Metropolitan Planning Organization's Transportation Advisory Committee hereby opposes the North Carolina Department of Transportation's designation of US 17 Business (Market Street) between SR 1409 (Military Cutoff Road) and US 17 (John Jay Burney Jr. Freeway) in New Hanover County for the use of trucks with twin trailers.

NOWTHEREFORE ALSO, be it resolved that if the North Carolina Department of Transportation decides to proceed with this designation, the Wilmington Metropolitan Planning Organization requests a public hearing is held to receive additional public comment on this proposal prior to consideration by the North Carolina Board of Transportation.

ADOPTED at a regular meeting of the Wilmington Urban Area Metropolitan Planning Organization Transportation Advisory Committee on August 29, 2012.

Laura Padgett., Chair
Transportation Advisory Committee

Mike Kozlosky, Secretary

**WILMINGTON URBAN AREA METROPOLITAN PLANNING ORGANIZATION
TRANSPORTATION ADVISORY COMMITTEE**

**RESOLUTION SUPPORTING THE CITY OF WILMINGTON'S APPLICATION
TO THE NORTH CAROLINA DEPARTMENT OF TRANSPORTATION
FOR THE DESIGNATION OF AIRLIE ROAD AS A SCENIC BYWAY**

WHEREAS, the Wilmington Urban Area Metropolitan Planning Organization provides transportation planning services for the City of Wilmington, Town of Carolina Beach, Town of Kure Beach, Town of Wrightsville Beach, Town of Belville, Town of Leland, Town of Navassa, New Hanover County, Brunswick County, Pender County, Cape Fear Public Transportation Authority and the North Carolina Board of Transportation; and

WHEREAS, the North Carolina Department of Transportation has designated 54 Scenic Byways throughout the state; and

WHEREAS, these byways are designated to give travelers a chance to experience North Carolina history, geography and culture while raising awareness for their protection and preservation; and

WHEREAS, the City of Wilmington plans to submit an application to the North Carolina Department of Transportation for the designation of the Airlie Road Scenic Byway; and

WHEREAS, the Airlie Road Scenic Byway offers visitors an abbreviated tour of the beautiful Atlantic Intracoastal Waterway, a picturesque route with natural surroundings and diverse architectural character, access to the region's prized public park at Airlie Gardens, and ample opportunity for outdoor activities such as walking, biking, tours and health and educational programs; and

WHEREAS, the Airlie Road Scenic Byway also seeks to highlight the historical, cultural, and educational assets to the Wilmington area nestled between Bradley Creek and the Atlantic Intracoastal Waterway.

NOW THEREFORE, be it resolved by the Wilmington Urban Area Metropolitan Planning Organization's Transportation Advisory Committee hereby supports the City of Wilmington's application for Airlie Road to be designated as a Scenic Byway.

ADOPTED at a regular meeting of the Wilmington Urban Area Metropolitan Planning Organization Transportation Advisory Committee on August 29, 2012.

Laura Padgett, Chair
Transportation Advisory Committee

Mike Kozlosky, Secretary

Opportunities for Pedestrian Improvements with 2013 TIP and Resurfacing Projects on Oleander Drive

Walgreens Drug Store



Trader Joes Grocery Store (Future)



(Existing ADA Ramp)

(Existing Sidewalks)

CROSSWALK OPPORTUNITY

1 2013 Project will install right turn lane (currently no ADA ramp installation)

2 2013 Project will resurface Oleander Drive

CROSSWALK OPPORTUNITY

CROSSWALK OPPORTUNITY

(Existing Sidewalks)

(Existing ADA Ramp)

CVS Pharmacy



0

100

200 Feet



**WILMINGTON URBAN AREA METROPOLITAN PLANNING ORGANIZATION
TRANSPORTATION ADVISORY COMMITTEE**

**RESOLUTION REQUESTING THE NORTH CAROLINA DEPARTMENT OF
TRANSPORTATION (NCDOT) TO INSTALL CROSSING IMPROVEMENTS ACROSS ALL
FOUR LEGS OF THE INTERSECTION OF COLLEGE AND OLEANDER**

WHEREAS, the Wilmington Urban Area Metropolitan Planning Organization provides transportation planning services for the City of Wilmington, Town of Carolina Beach, Town of Kure Beach, Town of Wrightsville Beach, Town of Belville, Town of Leland, Town of Navassa, New Hanover County, Brunswick County, Pender County, Cape Fear Public Transportation Authority and the North Carolina Board of Transportation; and

WHEREAS, the duties and responsibilities of the Wilmington Urban Area Metropolitan Planning Organization (WMPO) Bicycle and Pedestrian Advisory Committee include supporting the enforcement of traffic laws for all roadway users; providing recommendations to the WMPO Transportation Advisory Committee with regards to bicycle and pedestrian accommodations; promoting the use of bicycling and walking for transportation, fitness and recreation; developing safe bicycle and pedestrian facilities; and

WHEREAS, the Wilmington Urban Area Metropolitan Planning Organization Bicycle and Pedestrian Advisory Committee adopted a resolution requesting that NCDOT install crossing improvements to allow for safe and accessible multi-modal transportation along all four legs of the intersection of College Road/NC 132 and Oleander Drive/US 76 on July 26th, 2012; and

WHEREAS, in September 2009 the WMPO adopted *Walk Wilmington: A Comprehensive Pedestrian Plan* which incorporates a thorough list of recommendations for implementation of pedestrian policies, regulations and facilities; and

WHEREAS, crossing improvements at the intersection of Oleander Drive/US 76 and College Road/NC 132 are specifically identified in the adopted *Walk Wilmington: A Comprehensive Pedestrian Plan*.

WHEREAS, the North Carolina Board of Transportation adopted a Complete Streets Policy in July 2009 that directs NCDOT to consider and incorporate all modes of transportation when building new projects or making improvements to existing infrastructure; and

WHEREAS, NCDOT has plans to install a right-turn lane along with a resurfacing project at the intersection of Oleander Drive/US 76 and College Road/NC 132; and

WHEREAS, it is likely that bicycles and pedestrians will cross at the intersection of Oleander Drive/US 76 and College Road as it is within a half mile of several pedestrian and bicycle trip generators to include a major county park, an elementary school, a church, a new grocery store, a major bike route; and

NOW THEREFORE, be it resolved that the Wilmington Urban Area Metropolitan Planning Organization Transportation Advisory Committee requests that NCDOT install crossing improvements to allow for safe and accessible multi-modal transportation along all four legs of the intersection of College Road/NC 132 and Oleander Drive/US 76.

ADOPTED at a regular meeting of the Transportation Advisory Committee on August 29, 2012.

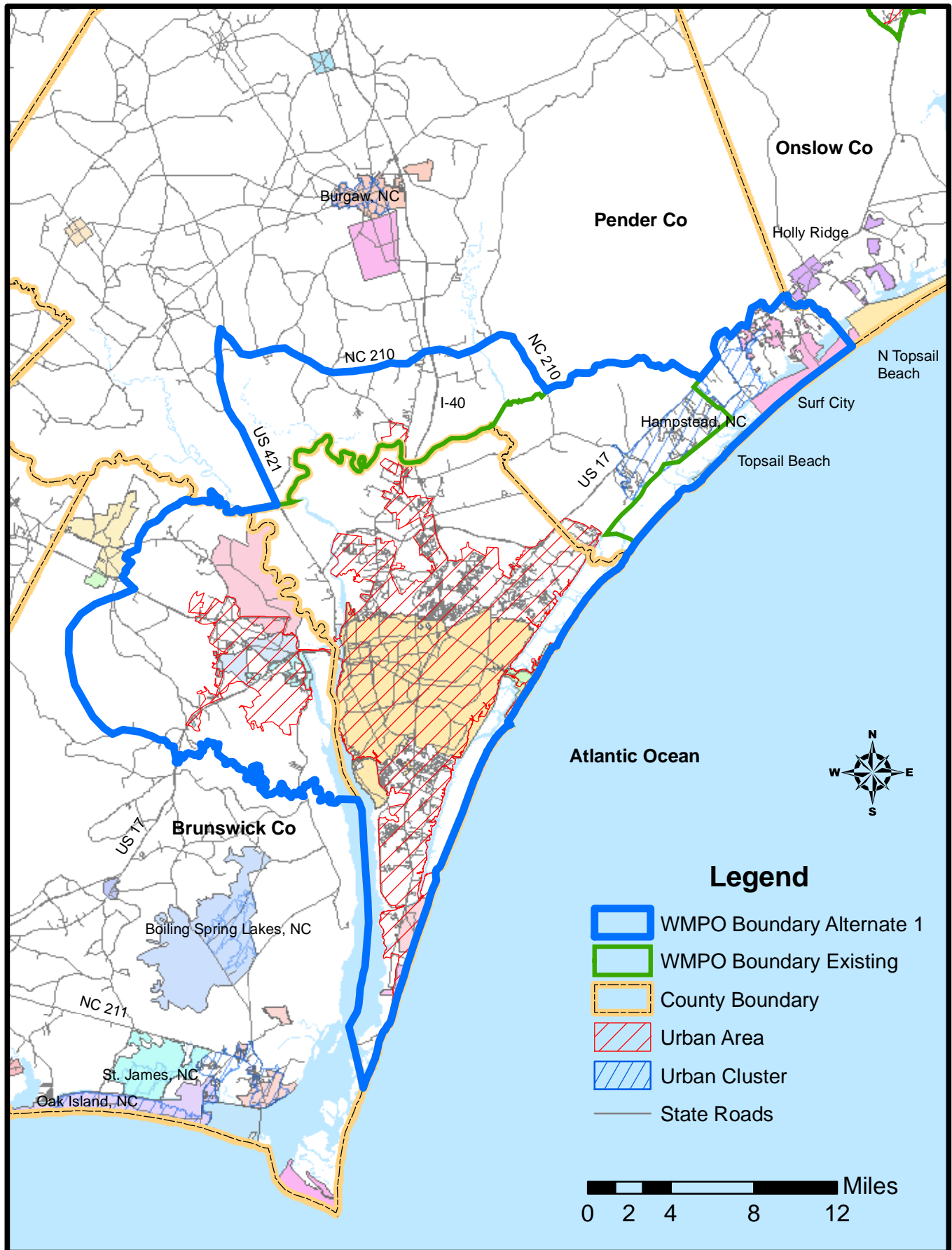
Laura Padgett, Chair
Transportation Advisory Committee

Mike Kozlosky, Secretary

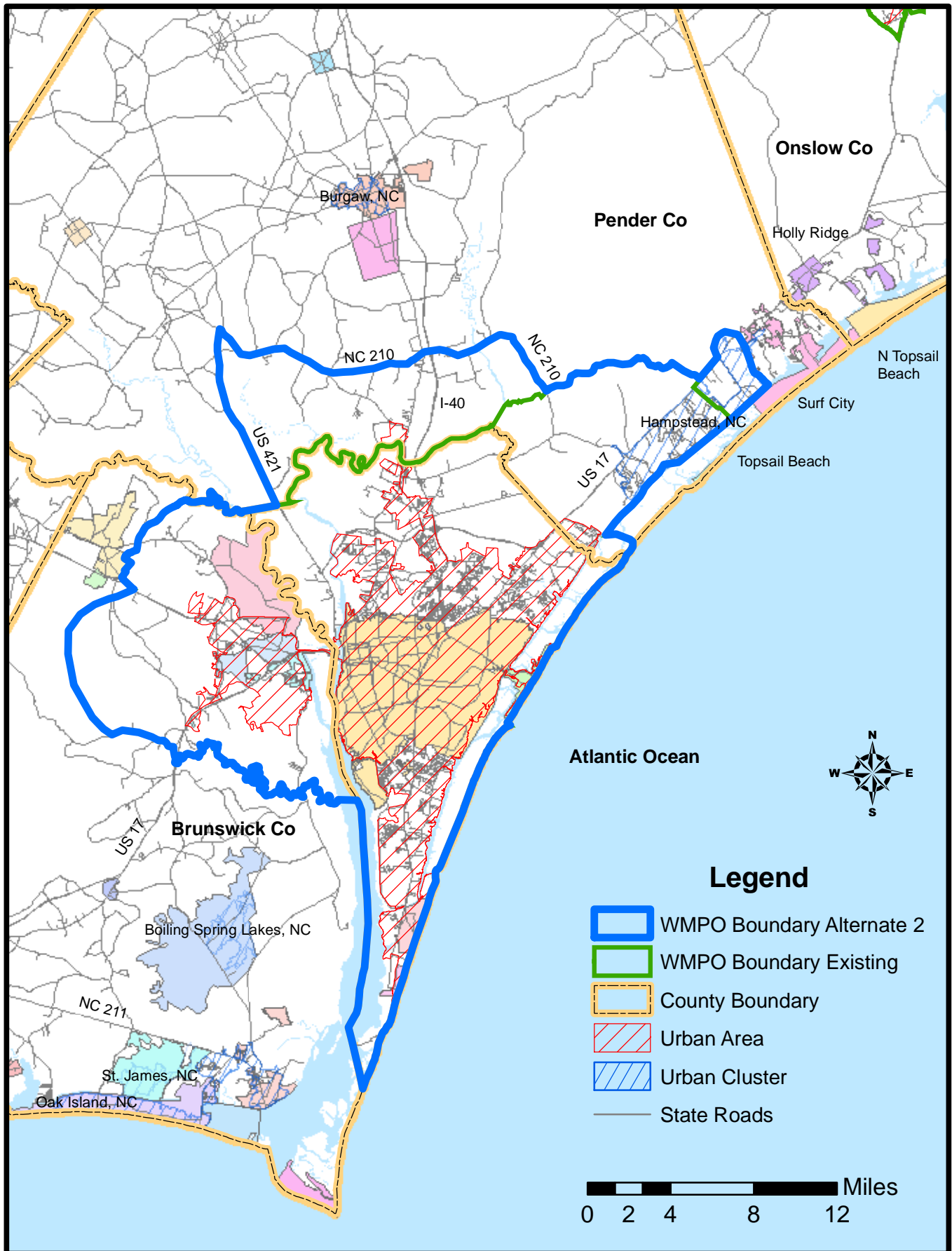
Full Extent of Potential Boundary Expansion



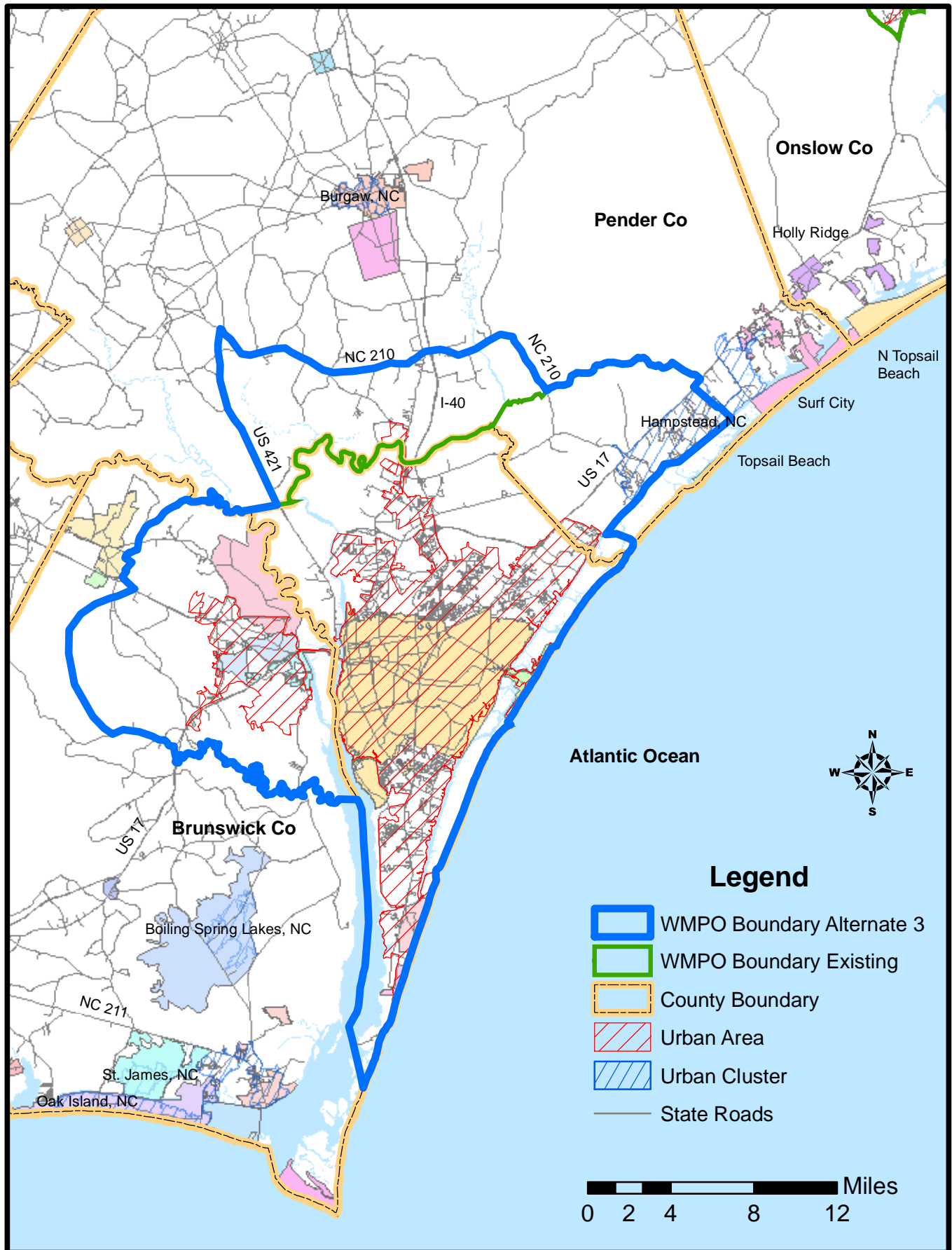
Wilmington MPO Boundary Alternate 1



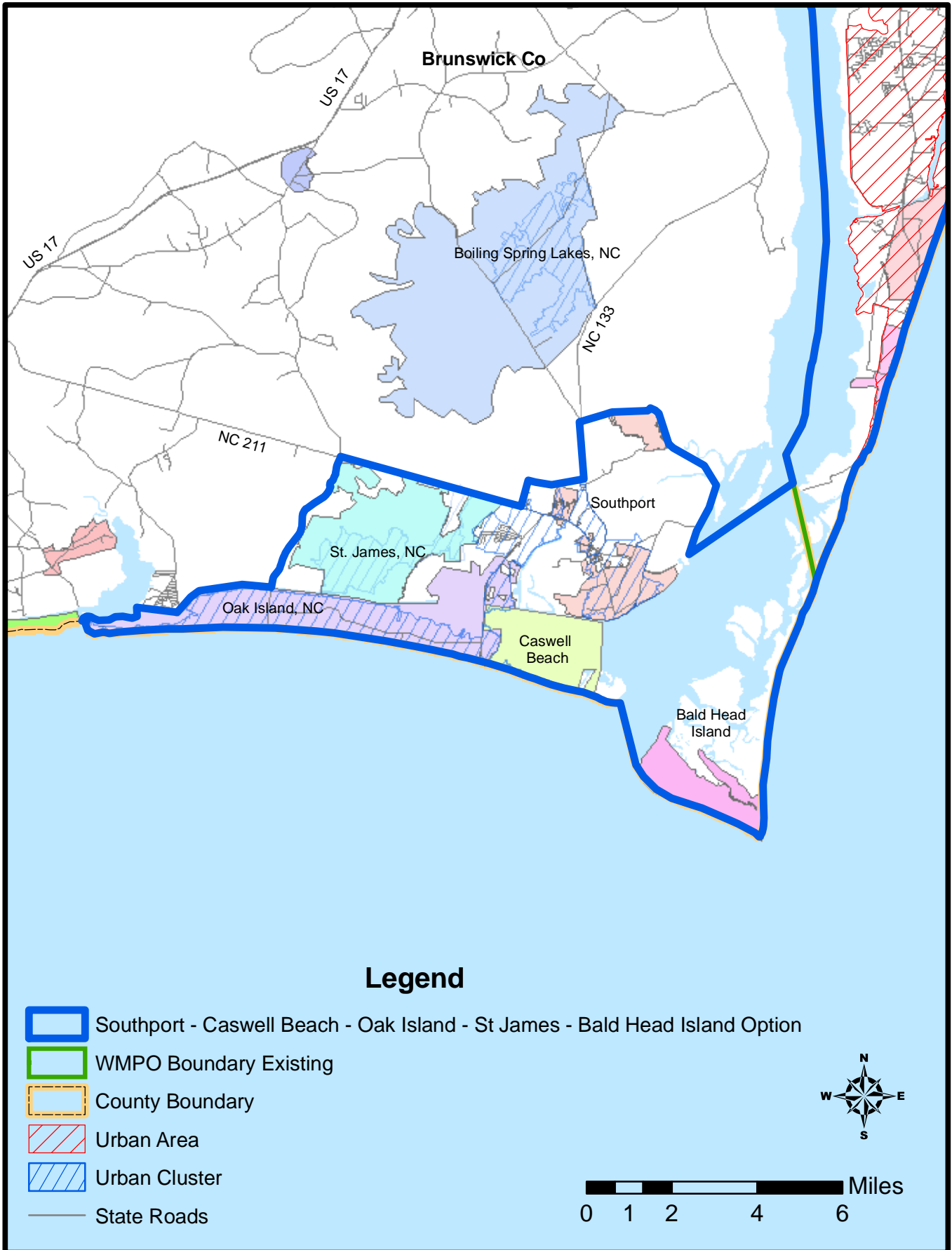
Wilmington MPO Boundary Alternate 2



Wilmington MPO Boundary Alternate 3



Wilmington MPO Boundary Southport-Caswell Beach-Oak Island-St. James-Bald Head Island Option





Moving Ahead for Progress in the 21st Century (MAP-21)

General Legislative Update

- Congress passed, and the President signed, a 27 month surface transportation authorization bill, MAP-21
- Funding is authorized through the end of FY14
- \$105 billion authorized for FY13 and FY14
- Funds programs at current levels plus inflation
- Extends HTF and tax collections through end of FY16
- Maintains approximate 80/20 highway/transit split
- According to CBO, without more general fund infusions, HTF to run out of funds in FY15
- Highway limitation on obligations
 - \$39.7B in FY13
 - \$40.3B in FY14

Federal Highway Program

Program	FY2012	FY2013	FY2014
Total Federal-aid Highway	\$35.7 billion	\$37.5 billion	\$37.8 billion
Metro Planning	\$283.8 million	\$311.7 million	\$314.3 million
CMAQ	\$2.32 billion	\$2.21 billion	\$2.23 billion
STP	\$8.8 billion	\$10 billion	\$10.1 billion
TIFIA	\$112 million	\$750 million	\$1 billion
Transportation Alternatives	\$1.2 billion	\$806.8 million	\$819.9 million
FHWA admin	\$423.7 million	\$454.2 million	\$440 million

Metro Planning under MAP-21

- Generally similar to current law
- Designation threshold remains at 50,000 in population
- Senate bill provisions concerning tiering and project selection eliminated by conference committee
- Basic timing and structure of Long Range Plans and TIPs retained

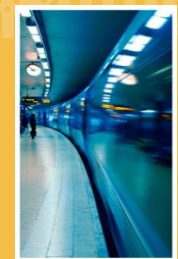
Metro Planning – New Policy

- Board structure
 - Within 2 years of enactment each TMA MPO shall include representation by providers of public transportation
 - An MPO may restructure to meet the new structure requirements without going through a re-designation
- Performance targets
 - MPOs establish targets to track progress towards attainment of outcomes for the region
 - Targets established in coordination with the state and providers of public transportation
 - Establish targets not later than 180 days after the state or the public transportation providers establish their performance targets



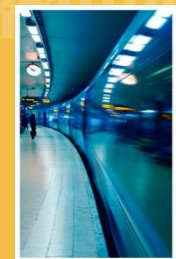
Metro Planning – New Policy Cont'd

- Plans and TIPs developed through a performance-driven, outcome-based approach
- Plan includes a description of performance measures and targets, and system performance report
- TIP contains: projects consistent with current plan; reflects investment priorities in the plan; and is designed to make progress toward achieving targets
- TIP includes anticipated effects of linking investments to targets
- Voluntary scenario planning



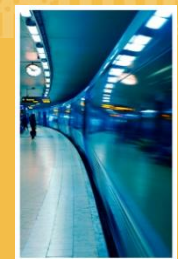
Congestion Mitigation and Air Quality (CMAQ)

- Largely retains current form, with added focus in PM2.5 areas to projects that are proven to reduce PM2.5, including diesel retrofits
 - MPOs 1 million and above must develop performance plan
 - Removes 10% Transportation Enhancements set-aside
 - Drops Senate bill provision requiring CMAQ funds be suballocated
 - CMAQ funds may be used to establish electric vehicle charging stations or natural gas vehicle refueling stations
 - Retains current law prohibition on construction of single-occupancy vehicle lanes
-



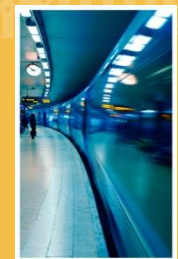
Surface Transportation Program (STP)

- Continues broad eligibility of current STP program
- 50% obligated by population, 50% obligated in any area of the state (previously 62.5% by pop and 37.5% to state after enhancements set-aside)
- 10% transportation enhancements requirement eliminated, still eligible
- Requires expenditures on bridges off the Federal-aid system if justified
- Suballocation protected from penalties incurred by state



Transportation Alternatives

- Replaces the Transportation Enhancement set-aside under STP
- Requires 2% of amount apportioned to states be set-aside for TA
- Includes enhancements, bike/ped facilities, safe routes to schools, recreational trails, and boulevards
- Suballocates 50% by population. MPOs over 200,000 in population operate competitive grant programs and make awards to projects that are eligible
- States may opt out of spending their 50% on TA and flex that money to other highway projects
- States are allowed to opt out of the recreational trails program



Project Delivery

- MAP-21 includes many provisions to expedite project delivery process

Selected Changes:

- State acquisition of real property interests before completion of NEPA process without affecting approvals
- Secretary may designate single modal agency to lead multi-agency project
- Establishes an issues resolution process undertaken when deadlines are not met during federal reviews
- Agencies may incur financial penalties for failure to render a decision
- Secretary shall establish and meet a 4 year deadline for projects that have been in NEPA review without a ROD for at least 2 years
- Expands modes the Secretary can assign and the state may assume responsibilities of the Secretary under NEPA. Expands the opportunity to all states

Federal Transit Program

Program	FY2012	FY2013	FY2014
Formula Grants	\$4.160 billion	\$4.398 billion	\$4.459 billion
Planning Set-Aside	\$113.5 million	\$126.9 million	\$128.8 million
TOD Pilot project	N/A	\$10 million	\$10 million
Elderly and Disabled (includes New Freedom)	\$133.5 million	\$254.8 million	\$258.3 million
JARC	\$164.5 million	N/A	N/A
Bus and Bus Facilities Grants	\$984 million	\$422 million	\$427.8 million
State of Good Repair Grants	N/A	\$2.136 billion	\$2.166 billion
New Starts	\$1.955 billion	\$1.907 billion	\$1.907 billion

Metro Planning under Transit Title

- Planning provisions in the public transportation title essentially mirror the provisions in the highway title
- Adds one new provision directing the Secretary to establish a \$10M per year pilot program to award planning grants to states or local government authorities for transit oriented development



Other Transit Items

- Urban Area Formula Grants - Operating Assistance
 - Allows transit systems to use 5307 grant funds for bus operations based on the number of buses operated during peak service hours
- New Starts
 - Streamlines process
 - Expands funding to programs of interrelated projects
- Consolidates Elderly and Disabled program with New Freedom
- JARC funding eliminated, but funding for these activities available under the urban and rural formula programs
- Strengthens FTA oversight over safety

TRANSPORTATION PLANNING

AUGUST 2012

CROSSING OVER THE CAPE FEAR RIVER

Project Description/Scope: Construct a new crossing over the Cape Fear River that will link from in the vicinity of US 17 to Independence Boulevard and Carolina Beach Road.

Next Steps:

- **August 29th update to the Transportation Advisory Committee on the status of the project**
- **The NCTA continues to work through the environmental review process.**

CITY OF WILMINGTON COLLECTOR STREET PLAN

Project Description/Scope: Complete a city-wide area collector street plan including Monkey Junction.

Next Steps:

- **October Public Workshops with local neighborhoods**

COMPREHENSIVE GREENWAY PLAN

Project Description/Scope: Complete a Comprehensive Greenway Plan for the City of Wilmington and New Hanover County. The greenway plan would lay the foundation for a comprehensive greenway network throughout the community.

Next Steps:

- **August 22nd Steering Committee meeting**
- **September 11th Public Workshop at Wilmington City Hall**
- **September 12th Public Workshop at Carolina Beach Town Hall**
- **September 13th Public Workshop at Ogden Elementary School**
- **October Final Draft**
- **December Adoption by local municipalities and New Hanover County**

CONNECTING NORTHERN BRUNSWICK COUNTY

Project Description/Scope: Create a Collector Street Plan for the Towns of Leland, Belville, Navassa and a portion of northern unincorporated Brunswick County.

Next Steps:

- **Complete presentations to jurisdictional boards by August 27th 2012**
- **Website launched with online questionnaire August 28th 2012**
- **September 17th First Public Workshop at Leland Town Hall**
- **First draft of plan released December 2012**
- **Second Public Workshop to be scheduled January 2012**
- **Final Plan Presented to jurisdictional boards February 2013**
- **Final deliverables and adoption by local entities March 2013**

MULTI-MODAL TRANSPORTATION CENTER (No significant change)

Project Description/Scope: Purchase right-of-way, develop design plans and construct the Wilmington Multi-modal Transportation Center between N. 3rd, N. 4th, Hanover and Red Cross streets.

Next Steps:

- NCDOT identify the necessary funding for construction and amend the STIP/MTIP to appropriate the construction funding
- Completion of the Environmental Document

N. 3RD STREET CORRIDOR STREETScape IMPROVEMENTS

Project Description/Scope: The North 3rd Street Streetscape Improvement project will upgrade North 3rd Street between Market Street and Davis Street. The project could include decorative mast-arm traffic signals and street lighting, underground utilities, pedestrian improvements, a landscaped median, street trees, and other aesthetic improvements. **The water and sewer work has been completed.**

Next Steps

- Continue the sidewalk, conduit installation, tree pits, brick pavers, street light foundations, etc. on both sides between Grace and Campbell Streets.
- The project is expected to be completed by November 2012.

SEE, SHARE AND BE AWARE

Project Description/Scope: Several community and government organizations including the City of Wilmington and Wilmington MPO have come together to create a safety and awareness campaign called “See Share Be Aware.” **The website has been updated, three additional educational videos are in production, and four audience-specific distribution plans have been created.**

Next Steps:

- Continue spreading the message to the general public through presence at community events, distribution of posters, and promotional items directing the public to the website.
- Complete the educational videos and air them on government channels by September 2012.
- Launch billboards in September 2012
- Launch the four audience-specific distribution plans to (1) K-12 Schools, (2) Higher Education, (3) Business Owners, (4) Government Organizations

SITE DEVELOPMENT REVIEW

Project Descriptions/Scope: The Wilmington MPO assists with site development and transportation impact analysis review for the MPO’s member jurisdictions. During the last month, staff has reviewed the following development proposals:

Development Plan Reviews: 23

Concept Plan Reviews: 1

TIA Scopings: 4

TIA Reviews: 5

Development Inquiries: 3

TRANSPORTATION DEMAND MANAGEMENT PROGRAM

Project Description/Scope: UNCW is taking the role as lead employer for the Cape Fear region. The WMPO will coordinate with UNCW to work with other major employers in the region to identify opportunities for ride sharing.

Next Steps:

- Complete geocoding for permanent UNCW employees
- Analyze survey results from UNCW employees and students
- Explore opportunities for UNCW to present at NCDOT conference
- Schedule monthly meetings with TDM consultant, WMPO and UNCW.

WRIGHTSVILLE BEACH COMMUNITY TRANSPORTATION PLAN

Project Description/Scope: Complete a Community Transportation Plan for the Town of Wrightsville Beach and Wilmington Urban Area Metropolitan Planning Organization, which includes all modes of Transportation (Biking, Walking, and Driving), and considers the Town's Critical Intersections and develops plans for Access, Safety and Congestion. The WB CTP plan would lay the foundation for a comprehensive transportation plan throughout the town, create a vision for the future and identify incremental steps to achieve it.

Next Steps:

- Publish WB CTP questionnaire on-line and within the town.
- September 18th conduct Stakeholders Interviews at Wrightsville Beach Town Hall Convention Center starting at 10 AM.
- September 18th Evening Public Workshop at Wrightsville Beach Parks and Recreation Center.



STATE OF NORTH CAROLINA
DEPARTMENT OF TRANSPORTATION

BEVERLY EAVES PERDUE
GOVERNOR

EUGENE A. CONTI, JR.
SECRETARY

August 10, 2012

TIP Projects:

Memorial Bridge – painting of the Memorial Bridge.

Lane closures are not allowed from Memorial Day to Labor Day (fall/winter time) for the following times: 5:00 AM to 7:00 PM

Lane closures are not allowed from Memorial Day to Labor Day (spring/summer time) for the following times: 6:00 AM to 7:00 PM Monday thru Thursday

Contractor to re-mobilize mid-April 2012, working at night with full bridge closures

Work Complete

R-2633 AA & AB: Construction of I-140 (Wilmington Bypass) from US 17 to US 74/76.

Estimated Contract Completion Date July 2013

R-3324 – Long Beach Road Extension construct a 2-lane, 2-way roadway on new location from NC 211 to NC 87.

Let Date of February 2013

R-3432 – SR 1163 (Georgetown Road) extend from SR 1184 (Ocean Isle Beach Road) to NC 179.

Start Date June 2013

R-3601 US 17/74/76: Widening across the “causeway”, between Leland and Wilmington.

Start Date February 2014

R-2633 B: Construction of I-140 (Wilmington Bypass)

R-2633 BA construct I-140 from US 74/76 to SR 1430 (Cedar Hill Road).

Start Date September 2013

R-2633 BB construct I-140 from SR 1430 (Cedar Hill Road) to US 421.

Start Date September 2013

U-3338 B: Widening of Kerr Ave. from Randall Parkway to Martin Luther King, Jr. Parkway.

Start Date March 2014

Military Cutoff Road Extension (U-4751): extending Military Cutoff Road from Market Street to the Wilmington Bypass, with an interchange at the Bypass.

Start Date December 2016

R-5021: NC 211 widening, from NC 87 to SR 1500 (Midway Road).

Start Date January 2021

U-4434: Independence Blvd. Extension from Randall Parkway to MLK Parkway.

Post Year

R-3434 – SR 1500 (Midway Road) and SR 1401 (Galloway Road) widening Midway Road from NC 211 to US 17 Bypass.

Post Year

R-4063: widen SR 1472 (Village Road) from SR 1435 (South Navassa Road) to SR 1438 (Lanvale Road).

Post Year

R-3300 Hampstead Bypass: extending from Wilmington Bypass to US 17 north of Hampstead.

Post Year

U-5300: NC 132 (College Road) from SR 1272 (New Center Drive) to SR 2048 (Gordon Road) widen to multi-lanes.

Start Date March 2022

Division Project:

Dow Road: SR 1573 (Dow Road) widen roadway for pave shoulders and left turn lanes at three locations, from US 421 to curb & gutter located on K Avenue.

Estimated Contract Completion Date December 2012

Wrightsville Beach Draw Bridge: Replacing the grates, bridge tender's house and other internal mechanical and electrical upgrades.

March 15, 2012 to October 1, 2012 (SUMMER) contractor will not be allowed to close a lane of traffic, during the following times:

from 7:00 AM to 9:00 AM

& from 3:00 PM to 6:00 PM

& from 7:00 AM Friday to 6:00 PM Sunday

October 2012 to March 2013 (WINTER), Traffic will be in a two-lane, two-way pattern (on the bridge) for the replacement of the grates. Contractor will not be allowed to close a lane of traffic:

from 7:00 AM to 9:00 AM

& from 3:00 PM to 6:00 PM

& from 7:00 AM Friday to 6:00 PM Sunday

Estimated Contract Completion Date July 2013

Memorial & Isabel Holmes Bridges: Mechanical (replacement of lock assemblies, auxiliary drive, brakes & gears) and electrical repairs (terminal cabinets, auxiliary drives and switches)

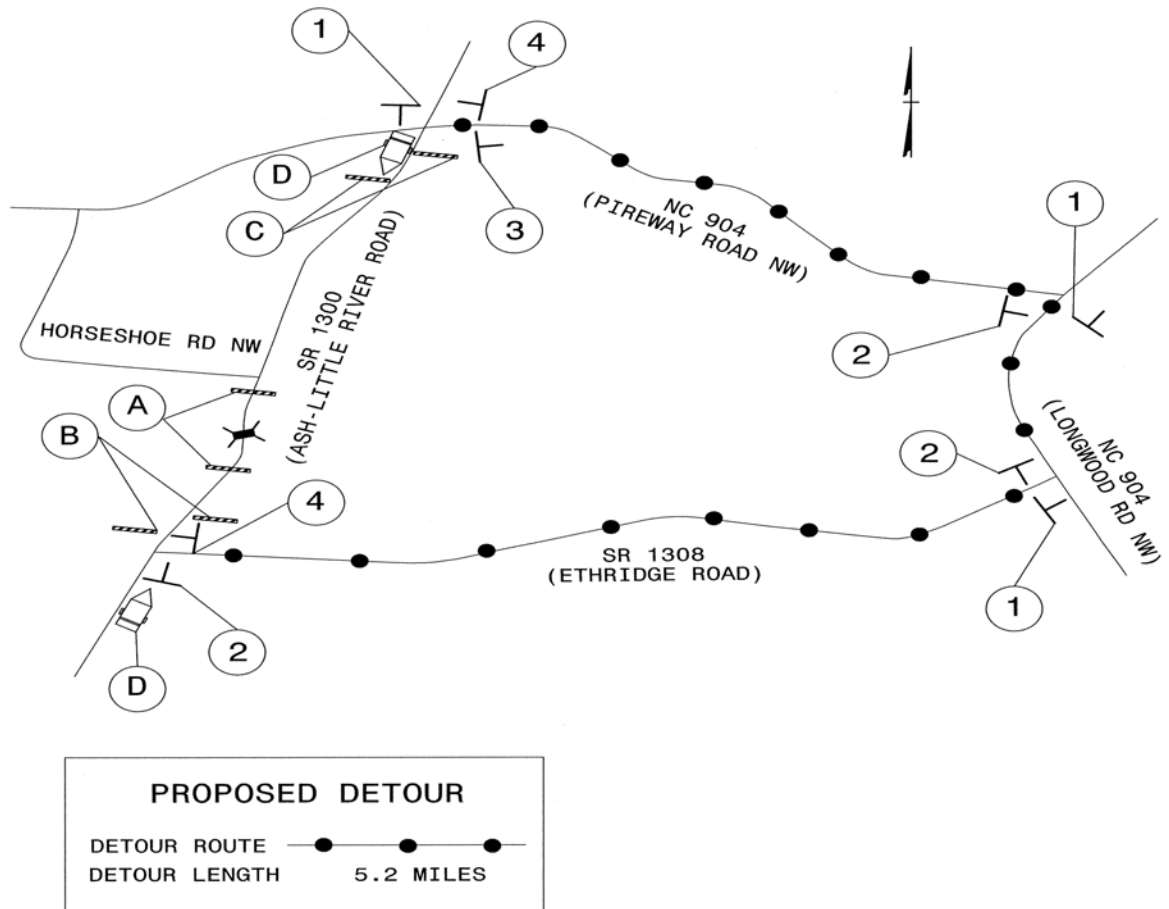
Contractor should be complete with all the work on both bridges, by May 2012, except for replacing cables, in the Memorial Bridge towers. This work will be completed in the Fall of 2012. This work will require shutting down the entire bridge for 3 consecutive days, on two occasions. At that time, the Department will issue a media release prior to the closure.

Estimated Contract Completion Date Fall 2012

Low Impact Bridge Program:

BD-5103B (Brunswick County) – replace Bridge #77 on SR 1300 (Ash-Little River Road) over Scipieo Creek.

Work Complete



Resurfacing Contracts:

Brunswick, New Hanover & Pender contract: C202680

Brunswick County:

NC 904 milling & resurfacing from NC 179 to East/West Second Street at Ocean Isle Beach

SR 1331 (Mill Branch Rd) resurfacing from NC 130 to SR 1335 (Big Neck Rd)

SR 1143 (Brick Landing Rd) resurfacing from NC 179 to end of system

New Hanover County:

US 17 Business (Market Street) milling & resurfacing from 0.206 miles south of SR 2251 (Barclay Hills Drive) at CSX RR tracks to 0.223 miles north of US 74 (MLK Parkway) intersection at the end of the curb & gutter

US 17/US 421 milling & resurfacing from 0.091 miles south of US 74/NC 133 intersection at new pavement joint to 0.208 miles north of I-140 overpass at "new" pavement joint

Wilmington Bypass leveling courses, at various locations: @ bridge approaches, @ CSX RR fly-over, & @ low areas around interchange of US 17 and US 17 Bus.

SR 1175 (Kerr Ave.) resurfacing from NC 132 to 0.14 mile south of Randall Pkwy

SR 1402 (Edgewater Club Rd) resurfacing from SR 1491 (Porter's Neck Rd) to end of system

SR 2127 (Judges Rd) resurfacing from US 17 Bus. to SR 2213 (Albemarle Rd)

SR 2219 (Green Meadows Rd) resurfacing from US 117 Bus. to SR 2281 (Spicewood St)

SR 1002 (Holly Shelter Rd) mill patch from US 117 to Pender Co. line

Pender County:

US 117 resurfacing from New Hanover County line at Northeast Cape Fear River Bridge to 0.30 mile north of NC 210

NC 53 milling & resurfacing from 0.53 miles west of SR 1400 (North/South Smith Street) to 0.03 miles east of US 117 Business in Burgaw

Estimated Completion Date Fall 2012

Brunswick & New Hanover Counties: C202916

Brunswick County:

US 17 NBL & SBL from US 17 Business (south end of Bolivia) to US 17 Business (north end of Shallotte)

NC 211 from US 17 to Lockwood Folly River Bridge.

US 17 Bus. (Shallotte) from US 17 to NC 179.

SR 1402 (Randolphville Road) from US 17 Bus. to SR 1401 (Galloway Road).

SR 1137 (Boones Neck Road) from NC 130 to end of system.

SR 1345 (Royal Oak Road) from US 17 to SR 1342 (Big Macedonia Road).

SR 1141 (Kirby Road) from SR 1139 (Seashore Road) to NC 130, 2' widening.

New Hanover County:

US 74/US 76 from 0.04 mile east of Summer Rest Road to US 76.

US 74 from US 76 to westside of Banks Channel Bridge #24.

SR 1002 (Holly Shelter Road) 2' widening, mill & resurface from US 117 (Castle Hayne

Road) to Pender County line.

SR 1521 (Piner Road) patching & resurface from 0.13 mile east of US 421 to SR 1492 (Masonboro Loop Road).

SR 1520 (Grissom Road) patching & resurfacing from SR 1521 to SR 1492.

SR 1492 patching & resurface from SR 1520 to Whiskey Creek bridge (Wilmington City Limits).

SR 1695 (Shannon Road) patching & resurface from SR 1492 (Myrtle Grove Road) to end of system.

SR 1336 (Sidbury Road) mill & resurface from SR 1318 (Blue Clay Road) to SR 2181 (Dairy Farm Road).

SR 1336 2' widening, patching & resurface from SR 2181 to Pender County line.

Estimated Contract Completion Date November 2012

Pender County: 3CR.20711.132

SR 1563 (Sloop Point Loop Road) - Mat coat with #5 Stone and resurface from SR 1561 (Sloop Point Road) to SR 1607 (Hickory Point Road).

SR 1564 (Lewis Road) widen from SR 1569 (Hoover Road) to end of system.

SR 1570 (Factory Road) resurface from US 17 to end of system.

Estimated Contract Completion Date June 2012

Pender County: C202927

SR 1572 (Sidbury Road) mill patch, widen & resurface from US 17 to New Hanover County line.

Estimated Contract Completion Date November 2012

Patching Contract:

Patching in Brunswick County:

US 74/US 76 (Joint Repairs) from Columbus County line to 0.36 mile east of SR 1417 (Malmo Loop Rd.).

NC 211 (Two bridge approaches) from 0.62 mile west of SR 1340 (Camp Branch Road) to 0.79 mile west of SR 1340.

US 74/US 76 EBL & WBL from US 17 to 0.10 mile west of SR 1722 (Mercantile Drive).

US 17 NBL & SBL from the New Hanover County line to SR 1414 (Goodman Road).

NC 130 from SR 1116 (Ocean Blvd.) to ICWW Bridge.

NC 130 from SR 1130 (Mt. Pisgah Road) to 0.18 mile east of Edgewater Drive (eastern limits of Smith Avenue).

NC 179 from NC 904 to SR 1143 (Bricklanding Road).

NC 87/NC 133 from NC 211 to NC 133.

Patching in New Hanover County:

US 17 Business from 0.142 mile north of SR 1409 (Military Cut-Off) to SR 1455 (Porters Neck Road).

US 117/NC 133 from Pender County line to NC 133.

NC 133 from US 117 to SR 1310 (Division Drive).

US 117/NC 132 NBL & SBL from US 74 (MLK Parkway) to I-40.

Patching in Pender County:

US 421 from where the divided highway begins/ends just north of NC 210 to the New Hanover County line.

Estimated Completion Date Summer/Fall 2012

If you have any questions, please contact Mr. Patrick Riddle: priddle@ncdot.gov