



WILMINGTON URBAN AREA Metropolitan Planning Organization

P.O. Box 1810
Wilmington, North Carolina 28402
910.342.2781 910.341.7801 FAX

The mission of the Wilmington MPO is to develop and implement a comprehensive multi-modal transportation plan that supports the existing and future mobility needs and economic vitality of the Wilmington Urban Area. This shall be accomplished by protecting the environment, safe guarding the social equity, improving the quality of life for the citizens of the community, improving the local economy and providing for the safe and efficient mobility throughout the region. This is achieved through the long range transportation planning process which includes a comprehensive, continuous and cooperative approach from citizens and participating members.

Members:

City of
WILMINGTON
Lead Planning Agency

Town of
CAROLINA BEACH

Town of
KURE BEACH

Town of
WRIGHTSVILLE BEACH

NEW HANOVER
County

Town of
BELVILLE

Town of
LELAND

Town of
NAVASSA

BRUNSWICK
County

PENDER
County

CAPE FEAR
Public Transportation
Authority

North Carolina
BOARD OF
TRANSPORTATION

Technical Coordinating Committee Meeting Agenda

TO: Technical Coordinating Committee Members
FROM: Mike Kozlosky, Executive Director
DATE: August 7, 2014
SUBJECT: August 13th meeting

A meeting of the WMPO Technical Coordinating Committee will be held on Wednesday, August 13th at 10 am. The meeting will be held in the Traffic Conference Room on the 4th Floor of 305 Chestnut Street in downtown Wilmington.

The following is the agenda for the meeting:

- 1) Call to Order
- 2) Approval of Minutes:
 - a. 7/9/14
- 3) Presentation
 - a. WMPO Role in Transportation Project Delivery – Adrienne Harrington
- 4) Consent Agenda
 - a. Resolution approving the STIP/MTIP Amendments (June and July)
 - b. Resolution approving STIP/MTIP Modifications (June)
 - c. Resolution providing comments on Performance Measures for MAP-21
 - d. Resolution supporting the Shipyard sidewalk and bus pull-out for 2013 STP-DA funding
 - e. Resolution supporting the City of Wilmington's Transportation Infrastructure (Streets and Sidewalks) Bond Initiative
- 5) Regular Agenda
 - a. Resolution adopting the Final Local Input Methodology Ranking and Scoring for Prioritization 3.0
 - b. Resolution supporting the utilization of funds from the UPWP to complete an update to the US 17 Business Corridor Study
 - c. Resolution supporting the utilization of funds from the UPWP to complete an update to the Coastal Pender Collector Street Plan
 - d. Resolution supporting the removal of the US 17 Designation from the Wilmington Bypass and applying the designation to certain streets in New Hanover County and City of Wilmington
- 6) Discussion
 - a. STIP/MTIP Modification (August)
- 7) Updates
 - a. Crossing over the Cape Fear River Work Group
 - b. Wilmington MPO

- c. Cape Fear Public Transportation Authority
- d. NCDOT Division
- e. NCDOT Transportation Planning Branch
- 8) Announcements
 - a. Wilmington MPO Bike/Ped meeting-August 21, 2014
- 9) Next meeting –September 10, 2014

Attachments:

- Minutes 7/9/14 meeting
- STIP/MTIP Amendments (June)
- STIP/MTIP Amendments (July)
- Resolution approving the STIP/MTIP Amendments (June and July)
- STIP/MTIP Modifications (June)
- Resolution approving STIP/MTIP Modifications (June)
- Performance Measures for MAP-21 Memo dated July 1, 2014
- Resolution providing comments on Performance Measures for MAP-21
- Map of proposed Shipyard Boulevard sidewalk and bus pull-out
- Resolution supporting the Shipyard sidewalk and bus pull-out for 2013 STP-DA funding
- Resolution supporting the City of Wilmington's Transportation Infrastructure (Streets and Sidewalks) Bond Initiative
- Approved DRAFT Local Input Methodology Ranking and Scoring- Regional
- Approved DRAFT Local Input Methodology Ranking and Scoring- Division
- Resolution adopting the Final Local Input Methodology Ranking and Scoring for Prioritization 3.0
- Resolution supporting the utilization of funds from the UPWP to complete an update to the US 17 Business Corridor Study
- Resolution supporting the utilization of funds from the UPWP to complete an update to the Coastal Pender Collector Street Plan
- NCDOT Route Change Request Form
- Map of US 17 Designation proposed re-assignment
- Resolution supporting the removal of the US 17 Designation from the Wilmington Bypass and applying the designation to certain streets in New Hanover County and City of Wilmington
- STIP/MTIP Modification (August)
- Wilmington MPO Project Update (August)
- Cape Fear Public Transportation Authority Update (August)
- NCDOT Project Update

**Wilmington Urban Area
Technical Coordinating Committee
Meeting Notes for July 9, 2014**

Members Present:

Mike Kozlosky, Wilmington MPO
Helen Bunch, Brunswick County
Don Bennett, City of Wilmington
Adrienne Harrington, TDM Coordinator
Karyn Crichton, New Hanover County
Ed Parvin, Town of Carolina Beach
Athina Williams, Town of Belville
Nora McCann, NCDOT Transportation Planning Branch

Megan Matheny, WAVE Transit
James Burke, Town of Navassa
Patrick Riddle, NCDOT Division 3
Ashli Barefoot, Town of Leland
Allen Serken, Cape Fear COG
Kyle Breuer, Pender County

Others Present:

Corey Knight, WMPO Engineer

1. Call to Order

Mr. Kozlosky called the meeting to order at 10:03 am.

2. Approval of Minutes

The minutes for the June 11, 2014 meeting were approved unanimously.

3. Presentation

a. Project Submittals for STP-DA and TAP-DA projects

Ms. Harrington and Mr. Knight gave a presentation on the Project Submittals for STP-DA and TAP-DA projects and the lessons learned from the last round of project submittals. Mr. Knight told members that staff wanted to review the common themes heard and the items missed during last year's applications process prior to this year's call for projects. He noted that many of the project submittals did not include design and administrative fees over-and-above the construction costs. Right-of-way acquisition and construction inspection services should be included in the project cost estimate. He suggested that a contingency fund should also be included as part of the budget submittal. Following the presentation Ms. Harrington told members the project review committee will be accepting applications for early review in October and the final deadline for project submittals will be November 17th.

4. Consent Agenda

a. Resolution approving the STIP/MTIP Amendments (May)

b. Opening of the 30-day public comment period for STIP/MTIP Amendments (July)

c. Resolution encouraging Congress to approve a Transportation Re-authorization Bill prior to the expiration of MAP-21

Mr. Serken made the motion to approve the items on the consent agenda and forward to the TAC for consideration. Mr. Bennett seconded the motion and it carried unanimously

5. Regular Agenda

a. Approval of the "Draft" Local Input Methodology Ranking and Scoring

Mr. Kozlosky told members that based on the adopted local input methodology, staff provided a recommended assignment of points at the Regional and the Division Tiers. He noted that in scoring projects, the Department used a threshold of \$40 million at the Regional Tier and \$30 million at the Division Tier for their assignment of local input points. Any projects over that threshold were not given points because they were deemed too expensive. Staff agreed with their methodology and recommended that points not be assigned to projects exceeding that cost threshold because it is very unlikely that those projects will be funded.

Ms. Bunch asked if it would be possible take projects that were determined to be too expensive and break them down into sections so that they might rank higher and be eligible for funding. Mr. Kozlosky said he thought that would be possible in Prioritization 4.0.

Mr. Kozlosky told members the next step in the process is to take the recommended "draft" ranking and scoring for projects to the TAC for consideration and if approved, open the public comment period. TAC members will approve a final list of projects at their August 27th meeting.

Ms. Crichton made the motion to approve the draft ranking and scoring for projects in Prioritization 3.0 and forward to the TAC for consideration. Ms. Harrington seconded the motion and it carried unanimously.

b. Opening of the Public Comment Period on the Local Input Methodology

Ms. Matheny made the motion to support the opening of the Public Comment Period on the "draft" ranking and scoring for projects and forward to the TAC for consideration. Ms. McCann seconded the motion and it carried unanimously.

c. Resolution approving Point Sharing in the Local Input Methodology

Mr. Kozlosky told members that point sharing is allowed based on conversations with NCDOT. The Cape Fear RPO approached the MPO regarding the possibility of transferring points to projects within the MPO's planning area boundary. The RPO will determine if they have points available to share at their meeting in mid-August. If those points are available, the MPO must have a mutually agreed upon process for the transfer of points. That can be done by resolution from both entities supporting the transfer of points. The TAC would have to approve the points in their final methodology.

Ms. Barefoot made the motion to support the transfer of points from the Cape Fear RPO to the Wilmington MPO so long as the TAC approves of the allocation of points to the requested projects and forward to the TAC for consideration. Ms. Bunch seconded the motion and it carried unanimously.

6. Discussion

a. Performance measures for MAP-21

Mr. Rashid told members that FHWA and FTA issued a Notice of Proposed Rulemaking on revisions to the regulations governing the development of metropolitan transportation plans and programs for urbanized areas. They are soliciting comments on the proposed rulemaking. The comments are due by September 2nd.

Ms. Rashid told members that staff drafted a memo in response to the revisions on the key items that will affect the MPO. She noted that some of the key issues are performance management requirements, state funding, MTP and TIP changes. Ms. Rashid told members it's anticipated that in

order to comply with the changes, an additional 1,800 hours of staff time will be needed. She noted that the changes will not affect the 2040 MTP that is due December of 2015, but it would affect the next MTP. Ms. Rashid reviewed the information contained in the memo and encouraged members to go to the website link provided within the memo for more details on the revisions to the regulations. She noted that staff will be bringing a resolution providing comments on Performance Measures for MAP-21 to the next meeting for consideration.

b. NCDOT Bike/Pedestrian - STI

Mr. Kozlosky told members that staff sent an email notifying members that NCDOT Bike/Pedestrian Division is requesting letters of local commitment for Bike/Pedestrian projects in SPOT Prioritization 3.0. He noted that a template was included with the email and the letters are due back by August 29th.

Mr. Kozlosky said because the state match for bike/pedestrian projects has been removed by the Legislature, the State will provide the 80% Federal fund pass-through and they need a commitment from local jurisdictions stating that they are willing to fund the remaining 20% of those projects. He noted that the letters are not binding and jurisdictions will still need to complete a municipal agreement for each of the selected projects.

7. Updates

Updates are included in the agenda packet.

8. Announcements

9. Adjournment

With no further items, the meeting was adjourned at 11:17am.

**THE ABOVE MINUTES ARE NOT A VERBATIM RECORD OF THE PROCEEDINGS.
THE ENTIRE PROCEEDINGS ARE RECORDED ON A COMPACT DISC AS PART OF THIS RECORD.**

PROPOSED REVISIONS TO 2012-2020 STIP PROGRAM

STIP/MTIP Additions (June)

* ER-5600 STATEWIDE PROJ.CATEGORY STATEWIDE REGIONAL DIVISION	VARIOUS, VEGETATION MANAGEMENT - CLEAR ZONE IMPROVEMENT AND MANAGEMENT STATEWIDE. ADD CONSTRUCTION IN FY 14 AND FY 15 NOT PREVIOUSLY PROGRAMMED.	CONSTRUCTION	FY 2014 - \$4,325,000 (TA) FY 2015 - <u>\$4,325,000</u> (TA) \$8,650,000
W-5601 STATEWIDE PROJ.CATEGORY STATEWIDE REGIONAL DIVISION	VARIOUS, RUMBLE STRIPS, GUARDRAIL, SAFETY AND LIGHTING IMPROVEMENTS AT SELECTED LOCATIONS. ADD RIGHT-OF-WAY IN FY 15 AND CONSTRUCTION IN FY 15 NOT PREVIOUSLY PROGRAMMED.	RIGHT-OF-WAY CONSTRUCTION	FY 2015 - \$1,400,000 (HSIP) FY 2015 - <u>\$8,400,000</u> (HSIP) \$9,800,000
* AV-5702 NEW HANOVER PROJ.CATEGORY STATEWIDE	WILMINGTON INTERNATIONAL, REHABILITATE GENERAL AVIATION APRON NORTH. ADD CONSTRUCTION IN FY 15 NOT PREVIOUSLY PROGRAMMED.	CONSTRUCTION	FY 2015 - \$500,000 (T) FY 2015 - <u>\$3,000,000</u> (O) \$3,500,000
* U-5702 NEW HANOVER PROJ.CATEGORY STATEWIDE	NC 132 (COLLEGE ROAD), SR 2048 (GORDON ROAD) TO US 421 (CAROLINA BEACH ROAD). WIDEN WITH ACCESS IMPROVEMENTS. PROGRAMMED FOR PLANNING AND ENVIRONMENTAL STUDY ONLY TO EXPEDITE DELIVERY OF NEW STI STATEWIDE PROJECT.		
* U-5704 NEW HANOVER PROJ.CATEGORY STATEWIDE	US 76 (OLEANDER DRIVE), US 117/NC 132 (COLLEGE ROAD) INTERSECTION. CONVERT AT-GRADE INTERSECTION TO SINGLE POINT URBAN INTERCHANGE. PROGRAMMED FOR PLANNING AND ENVIRONMENTAL STUDY ONLY TO EXPEDITE DELIVERY OF NEW STI STATEWIDE PROJECT.		
* U-5710 NEW HANOVER PROJ.CATEGORY STATEWIDE	US 74 (EASTWOOD ROAD), SR 1409 (MILITARY CUTOFF ROAD) INTERSECTION. CONVERT AT-GRADE INTERSECTION TO AN INTERCHANGE. PROGRAMMED FOR PLANNING AND ENVIRONMENTAL STUDY ONLY TO EXPEDITE DELIVERY OF NEW STI STATEWIDE PROJECT.		

[illegible]

**WILMINGTON URBAN AREA METROPOLITAN PLANNING ORGANIZATION
TRANSPORTATION ADVISORY COMMITTEE**

**RESOLUTION APPROVING AMENDMENTS OF THE
2012-2020 STATE /METROPOLITAN TRANSPORTATION IMPROVEMENT PROGRAMS**

WHEREAS, the Wilmington Urban Area Metropolitan Planning Organization provides transportation planning services for the City of Wilmington, Town of Carolina Beach, Town of Kure Beach, Town of Wrightsville Beach, Town of Belville, Town of Leland, Town of Navassa, New Hanover County, Brunswick County, Pender County, Cape Fear Public Transportation Authority and the North Carolina Board of Transportation; and

WHEREAS, the Transportation Advisory Committee has found that the Wilmington Urban Area Metropolitan Planning Organization is conducting transportation planning in a continuous, cooperative, and comprehensive manner; and

WHEREAS, the North Carolina Board of Transportation adopted the 2012-2020 State Transportation Improvement Program on July 7, 2011 and the Wilmington Metropolitan Planning Organization adopted the Statewide/Metropolitan Transportation Improvement Program on August 11, 2011; and

WHEREAS, the Wilmington MPO desires to amend the State/Metropolitan Transportation Improvement Programs for the following: ER-5600 Various Vegetation Management- Clear Zone Improvement and Management Statewide (add construction in FY 14 and 15 not previously programmed), W-5601 Various Rumble Strips, Guardrail, Safety, and Lighting Improvements at Selected Locations (add right-of-way in FY 15 and construction in FY 15 not previously programmed), AV-5702 Wilmington International-Rehabilitate General Aviation Apron North (add construction in FY not previously programmed), U-5702 NC 132 (College Road), SR 2048 (Gordon Road) to US 421 Carolina Beach Road) Widen with Access Improvements (programmed for planning and environmental study only to expedite delivery of new STI statewide project), U-5704 US 76 (Oleander Drive), US 117/NC 132 (College Road) Intersection. Convert At-grade intersection to Single Point Urban Interchange (programmed for planning and environmental study only to expedite delivery of new STI statewide project), U-5710 US 74 (Eastwood Road), SR 1409 (Military Cutoff Road) Intersection. Convert At-Grade Intersection to an Interchange, U-5525 Various Wilmington Urban Area Metropolitan Planning Organization Planning Allocation and Unified Work Program (add Engineering in FY 15 not previously programmed), and TN-5135 for the design, engineer and installation of 8 bus stop shelters; and

WHEREAS, the Wilmington Metropolitan Planning Organization has conducted a 30-day public comment period to receive citizen input on these transportation projects.

NOW THEREFORE, be it resolved by the Wilmington Urban Area Metropolitan Planning Organization's Transportation Advisory Committee approves amending the 2012-2020 State/Metropolitan Transportation Improvement Programs for the following: ER-5600 Various Vegetation Management- Clear Zone Improvement and Management Statewide (add construction in FY 14 and 15 not previously programmed), W-5601 Various Rumble Strips, Guardrail, Safety, and Lighting Improvements at Selected Locations (add right-of-way in FY 15 and construction in FY 15 not previously programmed), AV-5702 Wilmington International- Rehabilitate General Aviation Apron North (add construction in FY not previously programmed), U-5702 NC 132 (College Road), SR 2048 (Gordon Road) to US 421 Carolina Beach Road) Widen with Access Improvements (programmed for planning and environmental study only to expedite delivery of new STI statewide project), U-5704 US 76 (Oleander Drive), US 117/NC 132 (College Road) Intersection. Convert At-grade intersection to Single Point Urban Interchange (programmed for planning and environmental study only to expedite delivery of new STI statewide project), U-5710 US 74 (Eastwood Road), SR 1409 (Military Cutoff Road) Intersection. Convert At-Grade Intersection to an Interchange, U-5525 Various Wilmington Urban Area Metropolitan Planning Organization Planning Allocation and Unified Work Program (add Engineering in FY 15 not previously programmed), and TN-5135 for the design, engineer and installation of 8 bus stop shelters.

ADOPTED at a regular meeting of the Wilmington Urban Area Metropolitan Planning Organization Transportation Advisory Committee on August 27, 2014.

Laura Padgett, Chair
Transportation Advisory Committee

Mike Kozlosky, Secretary

**PROPOSED REVISIONS TO 2012-2020 STIP
PROGRAM**

**STIP/MTIP Modifications
(June)**

* I-5357	I-40, SOUTH OF NC 210 (MILE POST 408.6) IN PENDER	CONSTRUCTION FY 2015 - \$8,600,000 (NHPIM)
PENDER	COUNTY TO END OF I-40 (MILE POST 420) IN NEW	\$8,600,000
NEW HANOVER	HANOVER COUNTY. PAVEMENT REHABILITATION.	
PROJ.CATEGORY	<i>ACCELERATE CONSTRUCTION FROM FY 18 TO FY 15.</i>	
STATEWIDE	<i>PROJECT SCHEDULE CHANGED WITH I-5302 BASED ON PAVEMENT CONDITION NEEDS.</i>	

**WILMINGTON URBAN AREA METROPOLITAN PLANNING ORGANIZATION
TRANSPORTATION ADVISORY COMMITTEE**

**RESOLUTION APPROVING THE MODIFICATION OF THE
2012-2020 STATE /METROPOLITAN TRANSPORTATION IMPROVEMENT PROGRAMS**

WHEREAS, the Wilmington Urban Area Metropolitan Planning Organization provides transportation planning services for the City of Wilmington, Town of Carolina Beach, Town of Kure Beach, Town of Wrightsville Beach, Town of Belville, Town of Leland, Town of Navassa, New Hanover County, Brunswick County, Pender County, Cape Fear Public Transportation Authority and the North Carolina Board of Transportation; and

WHEREAS, the Transportation Advisory Committee has found that the Wilmington Urban Area Metropolitan Planning Organization is conducting transportation planning in a continuous, cooperative, and comprehensive manner; and

WHEREAS, the North Carolina Board of Transportation adopted the 2012-2020 State Transportation Improvement Program on July 7, 2011 and the Wilmington Metropolitan Planning Organization adopted the Statewide/Metropolitan Transportation Improvement Program on August 11, 2011; and

WHEREAS, the Wilmington MPO desires to modify the State/Metropolitan Transportation Improvement Programs for pavement rehabilitation on I-40, South of NC 210 (milepost 408.6) in Pender County to end of I-40 (milepost 420) in New Hanover to accelerate construction from FY 18 to FY 15.

NOW THEREFORE, be it resolved by the Wilmington Urban Area Metropolitan Planning Organization's Transportation Advisory Committee approves modifying the 2012-2020 State/Metropolitan Transportation Improvement Programs for pavement rehabilitation on I-40, South of NC 210 (milepost 408.6) in Pender County to end of I-40 (milepost 420) in New Hanover to accelerate construction from FY 18 to FY 15.

ADOPTED at a regular meeting of the Wilmington Urban Area Metropolitan Planning Organization Transportation Advisory Committee on August 27, 2014.

Laura Padgett, Chair
Transportation Advisory Committee

Mike Kozlosky, Secretary



WILMINGTON URBAN AREA Metropolitan Planning Organization

P.O. Box 1810
Wilmington, North Carolina 28402
910.342.2781 910.341.7801 FAX

MEMORANDUM

TO: TCC Members

FROM: Suraiya Rashid

DATE: July 1, 2014

SUBJECT: FHWA Notice of Proposed Rulemaking: Statewide and Nonmetropolitan Transportation Planning; Metropolitan Transportation Planning (Performance Management Framework)

Members:

City of
WILMINGTON
Lead Planning Agency

Town of
CAROLINA BEACH

Town of
KURE BEACH

Town of
WRIGHTSVILLE BEACH

NEW HANOVER
County

Town of
BELVILLE

Town of
LELAND

Town of
NAVASSA

BRUNSWICK
County

PENDER
County

CAPE FEAR
Public Transportation
Authority

North Carolina
BOARD OF
TRANSPORTATION

The Federal Highway Administration (FHWA) and the Federal Transit Administration (FTA) jointly issued a Notice of Proposed Rulemaking (NPRM) to propose revisions to regulations governing the development of metropolitan transportation plans and programs for urbanized areas on June 2, 2014. This draft rulemaking is based on MAP-21 and has several implications for Metropolitan Planning Organizations (MPOs). In particular, the proposed rulemaking proposes changes to the way MPOs coordinate with other planning processes, how MPOs are structured, and how we collect data and document compliance with MAP-21-required performance management.

FHWA & FTA are soliciting comments on the proposed rulemaking. The comment period on the proposed rulemaking extends to September 2, 2014.

The proposed rulemaking can be found at:

<https://www.federalregister.gov/articles/2014/06/02/2014-12155/statewide-and-nonmetropolitan-transportation-planning-metropolitan-transportation-planning>

Below you will find a synopsis on the main aspects of the proposed rulemaking that affect MPOs, and how the WMPO is affected in particular.

Key Items affecting the WMPO: (additional detail in following pages)

- 1) State Funding
- 2) MPO Agreement (MOU)
- 3) Performance Management Framework – Creation of Targets
- 4) Performance Management Framework – Data Collection Efforts
- 5) MTP changes
- 6) TIP changes

Timeframe of proposed rulemaking:

Release Date & Comment Period Initiated: June 2, 2014

Comment Period Closes: September 2, 2014

Performance Management Phasing: 2 years from date of final rule (2040 MTP not affected). Potentially accelerates next cycle of the MTP

Anticipated staff time to WMPO (TMA): 1,800 hours

Key Items affecting the WMPO:

- 1) Changes affecting the State's Planning Funds
 - Proposed rule specifies that state planning funds can be used for MPOs (Section 450.308(a))
- 2) MPO Agreement (MOU)
 - Proposed rule specifies that TMAs must include a representative from public transportation providers (also an element that must be included in the self-certification process for an MPO)
 - Proposed rule specifies that MPOs must identify in their MPO Agreements a coordinated process for:
 - Collection of transportation system performance data
 - Selection of performance targets for the MPO
 - Reporting of the metropolitan area targets
 - Reporting of actual system performance related to targets
 - Roles & responsibilities for collection of data for the NHS
- 3) Performance Management Framework – Creation of Targets
 - Proposed rule requires coordination in the development of each MPO's performance management frameworks with the following plans created by the following entities: *(coordinating goals, objectives, performance measures, and targets)*
 - State Asset Management Plan for NHS – *NCDOT (data collection in part by MPOs)*
 - Investment priorities of public transit asset management plans - *NCDOT*
 - Strategic Highway Safety Plan - *NCDOT*
 - Public Transportation Agency Safety Plan – *CFPTA*
 - Transit Asset Management Rule – *FTA*
 - National & Public Transportation Safety Plans Rule - *FTA*
 - State Freight Plans - *NCDOT*
 - Proposed rule requires that performance management must be used to measure the following:
 - Safety
 - Infrastructure conditions
 - System reliability
 - Emissions
 - Freight movements
 - Safety – Transit
 - State of Good Repair – Transit
 - Proposed rule specifies that MPO Performance targets must be set no later than 180 days after the State or Public Transportation Provider establishes their MAP-21 performance targets
- 4) Performance Management Framework – Data Collection Efforts
 - Proposed rule requires that progress in system performance must be documented between MTP & TIP cycles
 - Proposed rule requires that MPOs coordinate data collection efforts for performance targets
 - Proposed rule requires that MPOs play a role in the data collection efforts for the State Asset Management Plan for the NHS

5) MTP changes

- Proposed rule requires that the current transportation demand of persons and goods be noted in the MTP
- Proposed rule requires integration of goals, objectives, performance measures and strategies from
 - SHSP
 - Public Transportation Agency Safety Plan
- Proposed rule requires that financial element of MTPs must consider State Asset Management Plan for NHS and priorities of public transit authorities
- Proposed rule requires that progress in system performance must be documented between MTP cycles
- Proposed rule requires that the MTP must evaluate performance management through:
 - (1) describing performance targets
 - (2) evaluating condition and performance of the transportation system
 - (3) reporting on progress towards achievement of targets

6) TIP changes

- Proposed rule requires that the TIP must reflect investment priorities in MTP
- Proposed rule requires that progress in system performance must be documented between TIP cycles
- Proposed rule requires that the TIP must be tied to the State Asset Management Plan for NHS and to established priorities of public transit providers

Anticipated Impacts to WMPO:

- Additional coordination with several other entities on the timing and content of their plans
- Changes to the MPO Agreement/Memorandum of Understanding
- Additional participation of member agencies in data collection efforts
- Additional data collection and documentation
- Creation and tracking of performance measures
- Integration of additional fiscal considerations into MTP Financial Element
- Additional analysis and tracking of TIP performance
- Estimated additional 1,800 hours of staff time (estimate from NPRM)

Initial Draft Comments to FHWA/FTA on Proposed Rulemaking:

- Significant additional staff time will be required of MPOs to coordinate performance management goals, objectives, measures, and targets with other entities
- Additional burdens are being placed on MPO member jurisdictions in terms of data collection for the State Asset Management Plans for the NHS
- Without an identified flow of information for coordination, the logistics of aligning the performance measurement framework between multiple agencies with different timetables will be incredibly difficult. The framework for the coordination effort should be laid out in advance of the requirement.
- It is difficult to comment on the performance measurement requirements without knowing what degree of performance measurements MPOs must enact – additional guidance on the performance measure creation and data collection is required to ascertain the capability of MPOs to comply with this rule

- Coordination on establishing and tracking the performance in the TIP should be a requirement of NCDOT, the entity that programs our TIPs, rather than MPOs in the state of North Carolina.
- In light of the proposed rulemaking, NCDOT may consider having the MPO program the funds much like what is done in other states.
- In light of the additional staffing requirements placed on MPOs and TMAs, NCDOT may consider sharing funds provided under 40 U.S.C. 5305 (e) or other sources to aid MPOs in carrying out the proposed requirements in this proposed rulemaking.

**WILMINGTON URBAN AREA METROPOLITAN PLANNING ORGANIZATION
TRANSPORTATION ADVISORY COMMITTEE**

**RESOLUTION PROVIDING COMMENTS TO FHWA REGARDING THE NOTICE OF
PROPOSED RULEMAKING ON METROPOLITAN TRANSPORTATION PLANNING**

WHEREAS, the Wilmington Urban Area Metropolitan Planning Organization provides transportation planning services for the City of Wilmington, Town of Carolina Beach, Town of Kure Beach, Town of Wrightsville Beach, Town of Belville, Town of Leland, Town of Navassa, New Hanover County, Brunswick County, Pender County, Cape Fear Public Transportation Authority and the North Carolina Board of Transportation; and

WHEREAS, the Federal Highway Administration (FHWA) issued a notice of proposed rulemaking (NPRM) on a number of topics to include Metropolitan Transportation Planning on June 2, 2014; and

WHEREAS, FHWA requested comments on the NPRM by September 2, 2014; and

WHEREAS, the Wilmington MPO has reviewed the NPRM on Metropolitan Transportation Planning and provides the following comments:

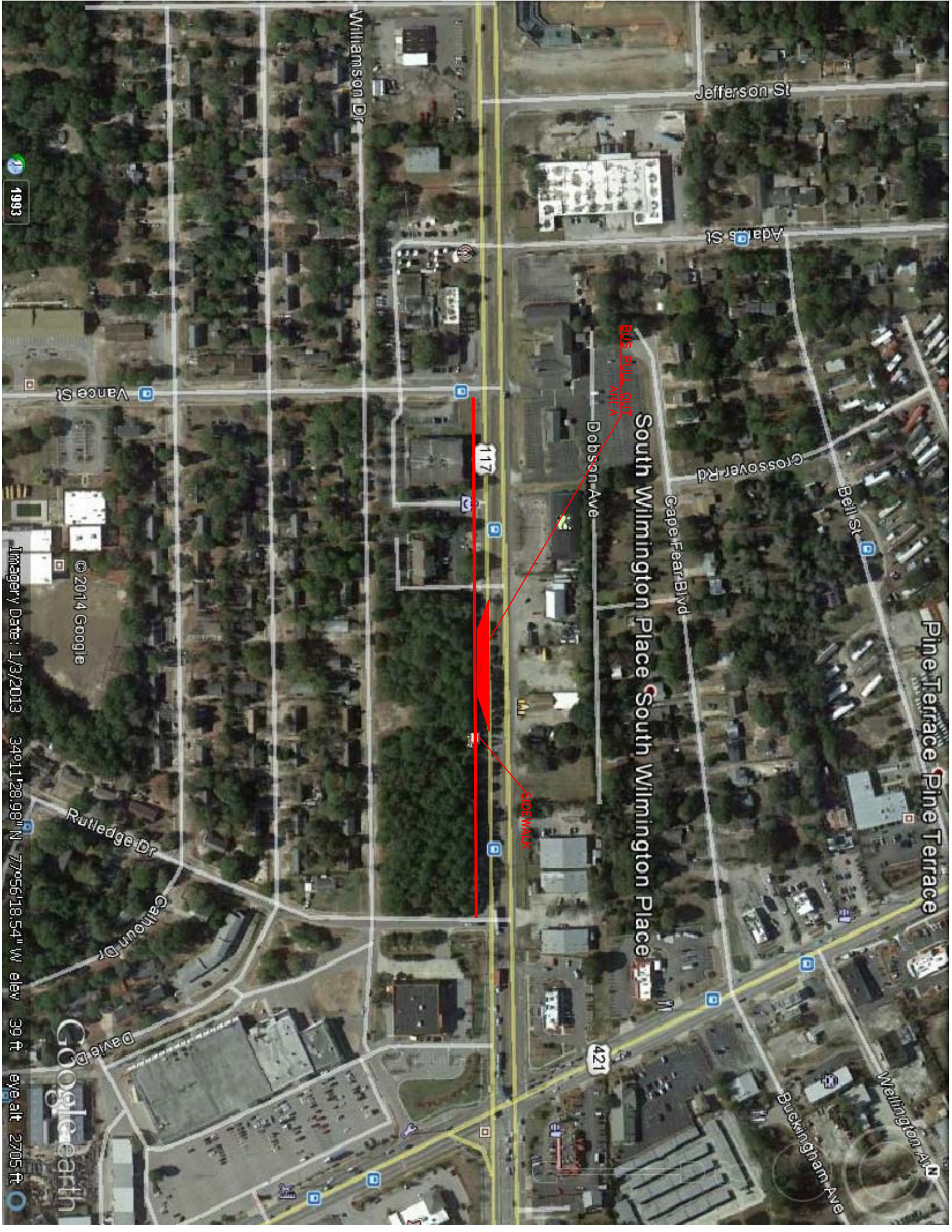
- The Wilmington MPO is concerned that significant additional staff time will be required of MPOs to coordinate performance-based planning goals, objectives, measures, and targets with other entities. In light of the additional staffing requirements placed on MPOs and TMAs, FHWA should consider making additional funding sources available to the MPOs to carry out these transportation planning tasks. NCDOT should also consider sharing funds provided under 40 U.S.C. 5305 (e) or other sources to aid MPOs in carrying out the proposed requirements.
- The Wilmington MPO has concerns about additional burdens being placed on MPO member jurisdictions in terms of data collection for the State Asset Management Plans and other aspects of performance-based planning. FHWA should consider the impacts/burdens placed on MPOs and should consider encouraging the minimization of new data collection efforts through emphasizing the utilization of existing data collection processes for evaluation of targets.
- In reference to proposed revisions to 23 CFR 450.340; the Wilmington MPO encourages FHWA to clarify phase-in requirements and processes. FHWA should consider defining a process by which federal, state, and local coordination of performance targets occurs in a sequential fashion to make a clear critical path for organizational development of performance targets.
- In order to ensure that performance-based planning is an effective process in light of dwindling federal transportation revenues, FHWA should consider giving MPOs flexibility in how performance target progress is addressed. Without adequate funding for infrastructure improvements, it is logical to anticipate decline in system performance in future years.
- In reference to proposed revisions to 23 CFR 450.326; FHWA should consider requiring NCDOT, rather than MPOs, to be responsible for establishing and tracking performance in the TIP in the state of North Carolina. In light of the proposed rulemaking, FHWA should also consider encouraging NCDOT to allow MPOs to program funds in the TIP much like what is done in other states.
- In reference to proposed revisions to 23 CFR 450.314; the Wilmington MPO has concerns about referencing the processes for performance measurement data collection, selection of targets, reporting targets and roles & responsibilities of parties in the MPO agreement as these processes will need to be adaptable to frequent change. FHWA should consider allowing these items to be adopted by resolution.

NOW, THEREFORE, BE IT RESOLVED, that the Wilmington Metropolitan Planning Organization's Transportation Advisory Committee hereby provides the aforementioned comments to FHWA regarding the notice of proposed rulemaking (NPRM) on Metropolitan Transportation Planning.

ADOPTED at a regular meeting of the Wilmington Urban Area Metropolitan Planning Organization Transportation Advisory Committee on August 27, 2014.

Laura Padgett, Chair
Transportation Advisory Committee

Mike Kozlosky, Secretary



Jefferson St

Adams St

Dobson Ave

South Wilmington Place

Cape Fear Blvd

Crossover Rd

Bell St

Pine Terrace

Wellington Ave

Buckingham Ave

Vance St

Rutledge Dr

Cathoun Dr

David Dr

1993

Imagery Date: 1/3/2013

34°11'28.98" N 77°56'18.54" W elev 39 ft

eye alt 2705 ft

Google Earth

**WILMINGTON URBAN AREA METROPOLITAN PLANNING ORGANIZATION
TRANSPORTATION ADVISORY COMMITTEE**

**RESOLUTION SUPPORTING THE ALLOCATION OF SURFACE TRANSPORTATION
PROGRAM- DIRECT ATTRIBUTABLE (STP-DA) FUNDS TO THE SHIPYARD BOULEVARD
SIDEWALK AND BUS PULL-OUT PROJECT**

WHEREAS, the Wilmington Urban Area Metropolitan Planning Organization provides transportation planning services for the City of Wilmington, Town of Carolina Beach, Town of Kure Beach, Town of Wrightsville Beach, Town of Belville, Town of Leland, Town of Navassa, New Hanover County, Brunswick County, Pender County, Cape Fear Public Transportation Authority and the North Carolina Board of Transportation; and

WHEREAS, on July 18, 2012 the Federal Transit Administration (FTA) and the Federal Highways Administration (FHWA) designated the Wilmington Urban Area Metropolitan Planning Organization as a Transportation Management Area (TMA); and

WHEREAS, Surface Transportation Direct Attributable (STP-DA) funds are available for all designated TMAs; and

WHEREAS, the Wilmington Urban Area Metropolitan Planning Organization Transportation Advisory Committee adopted the prioritization process and modal target investment strategies to disperse FY 2013 STP-DA funding on October 31, 2012; and

WHEREAS, the approval included a 20% allocation for public transportation however, a portion of this allocation was unspent; and

WHEREAS, the construction of a sidewalk and bus pull-out along Shipyard Boulevard between Vance Street and Rutledge Drive would improve access to transit facilities in this area and also improve traffic flow along Shipyard Boulevard; and

WHEREAS, the estimated cost of the sidewalk and bus pull-out is estimated to cost \$300,000 with the City of Wilmington providing the required 20% local match.

NOW, THEREFORE, be it resolved that the Wilmington Metropolitan Planning Organization's Transportation Advisory Committee hereby supports the allocation of 2013 STP-DA funds to Shipyard Boulevard Sidewalk and Bus Pull-out project.

ADOPTED at a regular meeting of the Wilmington Urban Area Metropolitan Planning Organization Transportation Advisory Committee on August 27, 2014.

Laura Padgett, Chair
Transportation Advisory Committee

Mike Kozlosky, Secretary

**WILMINGTON URBAN AREA METROPOLITAN PLANNING ORGANIZATION
TRANSPORTATION ADVISORY COMMITTEE**

**RESOLUTION SUPPORTING THE CITY OF WILMINGTON'S TRANSPORTATION
INFRASTRUCTURE (STREETS AND SIDEWALKS) BOND INITIATIVE**

WHEREAS, the Wilmington Urban Area Metropolitan Planning Organization provides transportation planning services for the City of Wilmington, Town of Carolina Beach, Town of Kure Beach, Town of Wrightsville Beach, Town of Belville, Town of Leland, Town of Navassa, New Hanover County, Brunswick County, Pender County, Cape Fear Public Transportation Authority and the North Carolina Board of Transportation; and

WHEREAS, the City of Wilmington has transportation needs that are identified in Cape Fear Commutes 2035 Transportation Plan, Walk Wilmington: A Comprehensive Pedestrian Plan, Wilmington/New Hanover Comprehensive Greenway Plan and other adopted plans; and

WHEREAS, the City of Wilmington has a lack of capacity in the City's Capital Improvement Program to fund these much needed transportation infrastructure improvements; and

WHEREAS, citizen surveys conducted by the City of Wilmington have indicated that residents were most willing to support bond referendums to improve the maintenance of city streets and sidewalks and to improve the City's transportation network; and

WHEREAS, Cape Fear Commutes 2035 Transportation Plan is the fiscally constrained long-range transportation plan and includes local bonding as a revenue source; and

WHEREAS, the City of Wilmington has developed a \$55 million dollar transportation infrastructure (Streets and Sidewalks) bond package that will include financing in the amount of \$44 million and also includes \$11 million from the City's Capital Improvement Program; and

WHEREAS, the City has set a special bond referendum for November 4, 2014; and

WHEREAS, if approved by the voters, the City's transportation infrastructure (Streets and Sidewalks) bond initiative will improve mobility and safety and fund much needed transportation infrastructure across the City of Wilmington.

NOW THEREFORE, be it resolved by the Wilmington Urban Area Metropolitan Planning Organization's Transportation Advisory Committee hereby supports the City of Wilmington's efforts in the Transportation Infrastructure (Streets and Sidewalks) bond initiative.

ADOPTED at a regular meeting of the Wilmington Urban Area Metropolitan Planning Organization Transportation Advisory Committee on August 27, 2014.

Laura Padgett, Chair
Transportation Advisory Committee

Mike Kozlosky, Secretary

	SPOT ID	Project Category	TIP	Project Name	From	To	Description	NCDOT Estimate	Reduces Mean Travel Time	Reduces Conflicts	Includes Access Movements	Adopted Local Support	Prioritization	Local Preference	SPOT 3.0 Score	SPOT Sliced (Regional)	Consistency with Plans	Status of Development	Total (Regional)	WMPO Recommendation	Project Justification
									Data Out of 100	(Yes/No) * Yes= 100 No = 0	(Yes/No) * Yes= 100 No = 0	(Yes/No) * Yes= 100 No = 0	Points 50 or 30 or 10	Points Out of 100	50% 20%	20% Sliding Scale of 1-20	20% Out of 20	10% Out of 10	100% Out of 100		
1	H090390-C	Statewide Mobility	U-3338C	Kerr Avenue & US74/MLK Parkway Interchange	US 74 (Martin Luther King, Jr. Parkway)	Kerr Avenue	Convert at-Grade intersection to interchange.	\$ 20,755,000	36.26	100	0	100	50	63.6	28.61	11	20	10	72.8	100	
2	H110989	Regional Impact		US17BUS/Market Street Road Diet	US 17 (South 17th Street)	Covil Avenue	Construct a Road Diet, Add Bicycle Lanes	\$ 6,840,000	59.20	100	100	100	10	82.0	23.11	7	20	3	71.0	100	
3	H129646	Statewide Mobility	U-4738	Cape Fear River Crossing	US 17 in Brunswick County	US 421 (Independence Boulevard) in New Hanover County	Construct Freeway on New Location with a Structure Over the Cape Fear River (toll)	\$ 641,996,000	60.25	100	100	100	10	82.3	25.95	9	20	0	70.1	-	Too Expensive
4	H090499-B	Regional Impact	U-4902B	US17BUS/Market Street Access Management (B)	Colonial Drive	SR 1272 (New Centre Drive)	Construct Access Management Improvements	\$ 3,375,000	74.01	100	0	100	50	72.0	27.54	10	20	3	69.0	100	
5	H090215	Statewide Mobility	R-3300	Hampstead Bypass	US 17 South of Hampstead	US 17 North of Hampstead	Construct Multi-Lanes on New Location.	\$ 232,415,000	50.09	100	0	100	50	66.7	23.55	7	20	5	65.3	-	Too Expensive
6	H110978	Statewide Mobility		Isabell Holmes Bridge Interchange	US 17/421	US74/NC133	Construct a Flyover and Free-Flow Ramp at interchange	\$ 15,500,000	46.47	100	0	100	30	61.4	33.91	14	20	0	64.7	100	
7	H110992	Statewide Mobility		US117/NC132/College Road Upgrade	Randall Parkway	US 76 (Oleander Drive)	Upgrade Arterial, Add Bicycle Lanes and Sidewalks.	\$ 11,970,000	83.77	0	100	100	10	65.3	30.35	12	20	0	64.6	100	
8	H110976	Regional Impact		US421/Carolina Beach Road at NC132/College Road Flyovers	NC 132 (South College Road)	US421 (Carolina Beach Road)	Construct Flyovers at intersection	\$ 15,500,000	80.76	100	0	100	30	69.1	23.83	8	20	0	62.5	100	
9	H110979	Statewide Mobility		US117/NC132/College Road Upgrade	US 17 Business (Market Street)	Randall Parkway	Upgrade Roadway, Add Bicycle Lanes and Sidewalks.	\$ 5,814,000	74.14	0	100	100	10	63.1	27.59	10	20	0	61.6	100	
10	H110975	Statewide Mobility		US74/MLK Parkway at US17/Market Street Flyovers	US17/Market Street	US74/MLK Parkway	Construct Flyovers at intersection	\$ 15,500,000	70.59	100	0	100	10	62.4	25.58	9	20	0	60.2	100	
11	H141228	Statewide Mobility		US74/MLK Parkway at US17BUS/Market Street Interchange	US17BUS/Market Street	US74/MLK Parkway	Convert at-grade intersection to a SPUI	\$ 25,110,000	70.59	100	0	100	10	62.4	24.15	8	20	0	59.2	-	Duplicate of #10
12	H110980	Regional Impact		NC133/Castle Hayne Road Widening	I-140/US17 (Wilmington Bypass)	Division Drive	Widen Highway, Add Multi-Use Path	\$ 28,897,000	55.15	0	100	100	10	58.9	25.59	9	20	0	58.5	100	
13	H110987	Regional Impact		US421/Carolina Beach Road Streetscape	US 421 (Burnett Boulevard)	US 117 (Shipyard Boulevard)	Upgrade Arterial with a Landscaped Median and Bulb-Outs	\$ 10,206,000	66.97	0	0	100	10	39.3	39.83	18	20	0	57.7	100	
14	H090293	Statewide Mobility	R-4732	US17 Access Management	South Carolina State Line	US 74/76	Access Management Improvements at Various Locations.	\$ 426,139,000	27.95	100	0	100	50	61.8	15.48	2	20	3	55.9	-	Too Expensive
15	H142202	Statewide Mobility		US117/NC132/College Road Widening	SR 2048 (Gordon Road)	US 421 (Carolina Beach Road)	Widen NC 132 (College Road) with access improvements	\$ 42,943,000	81.43	100	100	100	10	87.0	30.2	12	0	0	55.5	-	Funded/Cash Flowed beyond 2025
16	H090711	Statewide Mobility		US117/NC132/College Road Widening	SR 2048 (Gordan Road)	SR 1272 (New Centre Drive)	Upgrade College Road from Gordon Road to the SR 1272 (New Centre Drive).	\$ 84,213,000	77.25	0	0	100	30	46.1	30.08	12	20	0	55.0	-	Too Expensive
17	H110994	Regional Impact		NC133/River Road Streetscape	US 17/74/76	SR 1554 (Old River Road)	Upgrade Arterial; Add Landscaped Median, Left-Turn Lanes, Bicycle Lanes and Sidewalks	\$ 5,130,000	62.96	0	100	100	10	60.7	18.97	4	20	0	54.3	100	
18	H141231	Statewide Mobility		US76/Oleander Drive at US117/NC132/College Road Interchange	US117/NC132 (College Road)	US76/Oleander Drive	Convert at-grade intersection to a SPUI	\$ 25,110,000	90.15	100	0	100	10	66.7	41.5	20	0	0	53.4	-	Funded/Cash Flowed beyond 2025
19	H110981	Regional Impact		US421TRUCK/South Front Street Widening	US 17 Business/76/421 (Cape Fear Memorial Bridge)	US 421 (Burnett Boulevard)	Widen to Four Lane Divided Arterial, Add Multi-Use Path and Sidewalk	\$ 9,952,000	45.57	0	0	100	10	34.6	31.54	13	20	0	50.3	100	
20	H090713	Regional Impact		NC133/River Road Widening	Rabon Way SE	US 17/74/76	Widen NC 133 (River Road) from the Rabon Way SE to the interchange at US 17/74/76	\$ 34,401,000	43.86	0	100	100	10	56.4	13.95	1	20	0	49.2	100	
21	H090360	Regional Impact	U-2724	NC133/Castle Hayne Road Widening	US 74 (Martin Luther King, Jr. Parkway)	SR 1002 (Holly Shelter Road)	US 74 (Martin Luther King, Jr. Parkway) to SR 1002 (Holly Shelter Road) at Castle Hayne and Along SR 1002 to I-40. Widen to Multi- Lanes.	\$ 111,437,000	49.09	0	0	100	10	35.4	23.61	7	20	0	44.7	-	Too Expensive

	SPOT ID	Project Category	TIP	Project Name	From	To	Description	NCDOT Estimate	Reduces Mean Travel Time	Reduces Congestion Points	Includes Access to - additional lands	Adopted Local Support or	Prioritization 200 Points	Local Preference Total	SPOT 3.0 Score (Regional)	SPOT Slided (Regional)	Consistency with Plans	Status of Development	Total (Regional)	WMPO Recommendation	Project Justification
									Data Out of 100	(Yes/No) * Yes= 100 No = 0	(Yes/No) * Yes= 100 No = 0	(Yes/No) * Yes= 100 No = 0	Points 50 or 30 or 10	Points Out of 100		Sliding Scale of 1-20	Out of 20	Out of 10	Out of 100		
22	H090803	Statewide Mobility		US17 Safety Improvements to Onslow County Line	Wilmington Bypass	Onslow County Line	Improve Safety and Preserve the Capacity of the Highway from the Mpo Boundary to the onslow County Line (Tip # Fs-0803B).	\$ 148,089,000	26.63	100	0	100	50	61.5	16.43	2	10	0	42.7	-	Too Expensive
23	H110988	Regional Impact		US421/Carolina Beach Road Streetscape	US 117 (Shipyards Boulevard)	George Anderson Drive	Upgrade Arterial By Adding a Landscaped Median	\$ 8,066,000	53.15	0	0	100	10	36.3	18.74	4	20	0	42.1	100	
24	H090287-A	Statewide Mobility	R-4462	US74 Upgrade	Whiteville	I-140/US 17 Wilmington Bypass	Upgrade Roadway to interstate Standards	\$ 54,000,000	17.65	100	0	100	50	59.5	15.58	2	10	0	41.7	-	Too Expensive
25	H141537	Statewide Mobility		US17 Improvements through Hampstead	near SR 1582 (Washington Acres Road)	Near SR 1563 (Sloop Point Loop Road)	Construct a super-street design	\$ 19,410,000	67.54	100	0	0	10	39.5	30.58	12	10	0	41.7	100	
26	R140031	Statewide Mobility		Construct Track and/or Structure Improvements (Freight Service)			Restoration of the Wallace to Castle Hayne Rail Corridor from just north of Wilmington to Wallace.	\$ 118,250,000	0	0	0	100	10	24.4	26.24	9	20	0	41.2		
27	H141226	Statewide Mobility		US74/MLK Parkway at US117/NC132/College Road Interchange	US117/NC132 (College Road)	US74/MLK Parkway	Convert at-grade intersection to a SPUI	\$ 25,110,000	59.97	100	0	100	10	60.0	28.33	11	0	0	41.0		
28	H141235	Regional Impact		NC210 at Island Creek Road Intersection Improvements	SR1002 (Island Creek Rd)		Improve safety at intersection of NC210 and SR1002 Island Creek Road in Pender County	\$ 1,240,000	18.15	100	0	100	10	50.7	13.51	1	10	0	36.3		
29	H090712	Regional Impact		US117 and NC133 Roundabout	US117	NC133	Construct a Roundabout at the intersection of US 117 and NC 133	\$ 775,000	44.12	100	0	0	10	34.2	38.8	18		0	35.1		
30	H141534	Statewide Mobility		US17BUS/Market Street at US17BYP/Wilmington Bypass Interchange	US17BUS/Market Street	US17BYP/Wilmington Bypass	Reconfigure ramps & add multi-lane northbound ramp from US 17 Business onto US 17.	\$ 8,370,000	48.43	100	0	100	10	57.4	19.21	4	0	0	32.7		
31	H090717	Regional Impact		US421/Carolina Beach Road Widening	Sanders Road	Piner Road	Widen Carolina Beach Road from Sanders Road to College Road/NC 132/Piner Road	\$ 9,574,000	87.12	0	0	100	30	48.2	22.38	7	0	0	31.1		
32	H090714	Statewide Mobility		Scientific Park Drive Extension	23rd Street	Creekwood Neighborhood	Construct the Extension of Scientific Park Drive from 23Rd Street to the Creekwood Neighborhood. This Will Allow the Closure of the only Existing Access on Martin Luther King Jr. Parkway Which Will Allow It to Become a Fully Controlled Access Facility	\$ 9,006,000	30.00	100	0	100	30	57.8	15.27	2	0	0	30.9		
33	A130507	Statewide Mobility		TAXIWAY A AND H WIDENING AND PAVED SHOULDERS			The airport has had plans to widen the North - South TWY system to make the width consistent throughout. Currently the TWY systemwidth ranges from 51- to 75 feet. The project will also add shoulders and to keep the TWY lights on pavement to reduce mowing andmaintenance. (includes Project Request Numbers: 2988)	\$ 500,000	0	0	0	100	10	24.4	21.29	6	0	0	18.2		
34	F130015	Regional Impact		Southport - Ft Fisher (NC 211)			Port Expansion: Additional Mooring Facilities to future additional boat	\$ 1,500,000	8.9	0	0	100	10	26.4	16.52	3	0	0	16.2		

	SPOT ID	Project Category	TIP	Project Name	From	To	Description	NCDOT Estimate	Reduces Mean Travel Time	Reduces Conflicts	Increases Access to Multimodal Transportation	Adopted Local Support	Prioritization 2.0 Points	Local Preference Total	SPOT 3.0 Score (Division)	SPOT Sliding (Division)	Consistency with Plans	Status of Prevailing Conditions	Total (Division)	WMPO Recommendation	Project Justification
									Data	(Yes/No)	(Yes/No)	(Yes/No)	Points	Points							
									Out of 100	* Yes= 100 No = 0	* Yes= 100 No = 0	* Yes= 100 No = 0	50 or 30 or 10	Out of 100		Sliding Scale of 1-20	Out of 20	Out of 10	Out of 100		
1	H110989	Regional Impact		US17BUS/Market Street Road Diet	US 17 (South 17th Street)	Covil Avenue	Construct a Road Diet, Add Bicycle Lanes	\$ 6,840,000	59.20	100	100	100	10	82.0	29.95	14	20	3	78.0	100	
2	H129646	Statewide Mobility	U-4738	Cape Fear River Crossing	US 17 in Brunswick County	US 421 (Independence Boulevard) in New Hanover County	Construct Freeway on New Location with a Structure Over the Cape Fear River (toll)	\$ 641,996,000	60.25	100	100	100	10	82.3	29.51	14	20	0	75.1	-	Too Expensive
3	H090499-B	Regional Impact	U-4902B	US17BUS/Market Street Access Management (B)	Colonial Drive	SR 1272 (New Centre Drive)	Construct Access Management Improvements	\$ 3,375,000	74.01	100	0	100	50	72.0	33.6	16	20	3	75.0	100	
4	H090390-C	Statewide Mobility	U-3338C	Kerr Avenue & US74/MLK Parkway Interchange	US 74 (Martin Luther King, Jr. Parkway)	Kerr Avenue	Convert at-Grade intersection to interchange.	\$ 20,755,000	36.26	100	0	100	50	63.6	28.12	13	20	10	74.8	100	
5	H110992	Statewide Mobility		US117/NC132/College Road Upgrade	Randall Parkway	US 76 (Oleander Drive)	Upgrade Arterial, Add Bicycle Lanes and Sidewalks.	\$ 11,970,000	83.77	0	100	100	10	65.3	37.77	18	20	0	70.6	100	
6	H090215	Statewide Mobility	R-3300	Hampstead Bypass	US 17 South of Hampstead	US 17 North of Hampstead	Construct Multi-Lanes on New Location.	\$ 232,415,000	50.09	100	0	100	50	66.7	25.63	11	20	5	69.3	-	Too Expensive
7	H110976	Regional Impact		US421/Carolina Beach Road at NC132/College Road Flyovers	NC 132 (South College Road)	US421 (Carolina Beach Road)	Construct Flyovers at intersection	\$ 15,500,000	80.76	100	0	100	30	69.1	30.35	14	20	0	68.5	100	
8	H090389	Division Needs	U-3337	US17/74/76 at Old Fayetteville Road Interchange	SR 1437 (Old Fayetteville Road)	US17/74/76	Convert Grade Separation to interchange	\$ 7,700,000	21.41	100	100	100	50	82.5	16.49	7	20	0	68.3	100	
9	H110979	Statewide Mobility		US117/NC132/College Road Upgrade	US 17 Business (Market Street)	Randall Parkway	Upgrade Roadway, Add Bicycle Lanes and Sidewalks.	\$ 5,814,000	74.14	0	100	100	10	63.1	33.03	15	20	0	66.6	100	
10	H129637	Division Needs	U-4434	Independence Boulevard Extension	Randall Parkway	US 74 (Martin Luther King, Jr. Parkway)	Construct Multi-Lanes on New Location	\$ 86,100,000	56.48	0	100	100	10	59.2	29.14	13	20	3	65.6	-	Too Expensive
11	H090448-A	Division Needs	U-3831A	Gordon Road Widening	NC 132 interchange	SR 2270 (Wood Sorrell Road)	Widen to Three Lanes	\$ 1,100,000	90.61	0	0	100	50	53.5	32.82	15	20	3	64.7	100	
12	H141228	Statewide Mobility		US74/MLK Parkway at US17BUS/Market Street Interchange	US17BUS/Market Street	US74/MLK Parkway	Convert at-grade intersection to a SPUI	\$ 25,110,000	70.59	100	0	100	10	62.4	27.86	13	20	0	64.2	100	
13	H110975	Statewide Mobility		US74/MLK Parkway at US17/Market Street Flyovers	US17/Market Street	US74/MLK Parkway	Construct Flyovers at intersection	\$ 15,500,000	70.59	100	0	100	10	62.4	27.86	13	20	0	64.2	100	
14	H110978	Statewide Mobility		Isabell Holmes Bridge Interchange	US 17/421	US74/NC133	Construct a Flyover and Free-Flow Ramp at interchange	\$ 15,500,000	46.47	100	0	100	30	61.4	29.41	13	20	0	63.7	100	
15	B141213	Bike&Ped, Division Needs		South 17th Street Multi-Use Path	(Hospital Plaza Drive)	(Independence Boulevard)	Construct a multi-use path on South 17th Street from Hospital Plaza Drive to Independence Boulevard	\$ 832,000	0	0	100	100	50	55.6	32.7	15	20	0	62.8	100	
16	H110980	Regional Impact		NC133/Castle Hayne Road Widening	I-140/US17 (Wilmington Bypass)	Division Drive	Widen Highway, Add Multi-Use Path	\$ 28,897,000	55.15	0	100	100	10	58.9	28.97	13	20	0	62.5	100	
17	H110994	Regional Impact		NC133/River Road Streetscape	US 17/74/76	SR 1554 (Old River Road)	Upgrade Arterial; Add Landscaped Median, Left-Turn Lanes, Bicycle Lanes and Sidewalks	\$ 5,130,000	62.96	0	100	100	10	60.7	27.23	12	20	0	62.3	100	
18	B141312	Bike&Ped, Division Needs		Peachtree Avenue Bicycle lanes	(Park Avenue)	(MacMillan Avenue)	Construct Bicycle Lanes along Peachtree Avenue from Park Avenue to Macmillan Avenue	\$ 209,000	0	0	100	100	10	46.7	38.32	18	20	0	61.3	100	
19	H142202	Statewide Mobility		US117/NC132/College Road Widening	SR 2048 (Gordon Road)	US 421 (Carolina Beach Road)	Widen NC 132 (College Road) with access improvements	\$ 42,943,000	81.43	100	100	100	10	87.0	35.59	17	0	0	60.5		
20	H090711	Statewide Mobility		US117/NC132/College Road Widening	SR 2048 (Gordan Road)	SR 1272 (New Centre Drive)	Upgrade College Road from Gordon Road to the SR 1272 (New Centre Drive).	\$ 84,213,000	77.25	0	0	100	30	46.1	35.34	17	20	0	60.0		
21	H090293	Statewide Mobility	R-4732	US17 Access Management	South Carolina State Line	US 74/76	Access Management Improvements at Various Locations.	\$ 426,139,000	27.95	100	0	100	50	61.8	16.35	6	20	3	59.9		
22	H090448-B	Division Needs	U-3831B	Gordon Road Widening	NC 132 interchange Road	West of US 17 (Market Street)	Widen to Multi-Lanes	\$ 17,300,000	83.69	0	0	100	30	47.5	31.57	15	20	0	58.7		

	SPOT ID	Project Category	TIP	Project Name	From	To	Description	NCDOT Estimate	Reduces Mean Travel Time	Reduces Conflicts Points	Includes Access to Multimodal Transportation	Adopted Local Support	Prioritization Points	Local Preference Total	SPOT Score (Division)	SPOT Sliding (Division)	Consistency with Plans	Status of Development	Total (Division)	WMP Recommendation	Project Justification
Data	(Yes/No)	(Yes/No)	(Yes/No)	Points	Points	50%	20%	20%	20%	10%	100%										
Out of 100	* Yes= 100 No = 0	* Yes= 100 No = 0	* Yes= 100 No = 0	50 or 30 or 10	Out of 100		Sliding Scale of 1-20	Out of 20	Out of 10	Out of 100											
23	B141261	Bike&Ped, Division Needs		North 23rd Street Bicycle Lanes	SR1318 (Blue Clay Rd)	US17BUS (Market Street	Construct Bicycle Lanes on North 23rd Street from SR1318 Blue Clay Road to US17 Market Street	\$ 1,132,000	0	0	100	100	30	51.1	28.99	13	20	0	58.6		
24	B141327	Bike&Ped, Division Needs		NC132 N College Road Multi-Use Path	SR2208 (New Town Drive)	Danny Pence Drive	Construct a multi-use path along North College Road from New Town Drive to Danny Pence Drive and along Danny Pence Drive to school entrance	\$ 148,000	0	0	100	100	10	46.7	31.35	15	20	0	58.3		
25	B141307	Bike&Ped, Division Needs		US76 Wooster Street Sidewalk	(8th Street)	US76 (Oleander Drive)	Construct a sidewalk on US76 Wooster Street from 8th Street to US76 Oleander Drive	\$ 113,000	0	0	100	100	50	55.6	40.68	20	10	0	57.8		
26	H110987	Regional Impact		US421/Carolina Beach Road Streetscape	US 421 (Burnett Boulevard)	US 117 (Shipyard Boulevard)	Upgrade Arterial with a Landscaped Median and Bulb-Outs	\$ 10,206,000	66.97	0	0	100	10	39.3	37.59	18	20	0	57.7		
27	B141258	Bike&Ped, Division Needs		Carolina Beach Road Multi-Use Path	SR1140 (Burnett Boulevard)	US117 (Shipyard Boulevard)	Construct a multi-use path from SR1140 (Burnett Boulevard) to US117 (Shipyard Boulevard	\$ 782,000	0	0	100	100	10	46.7	29.73	14	20	0	57.3		
28	B141317	Bike&Ped, Division Needs		Independence Boulevard Multi-Use Path	(South 17th Street)	US421 (Carolina Beach Road)	Construct a multi-use path along Independence Boulevard from South 17th Street to US421 Carolina Beach Road	\$ 387,000	0	0	100	100	10	46.7	29.23	13	20	0	56.3		
29	H090713	Regional Impact		NC133/River Road Widening	Rabon Way SE	US 17/74/76	Widen NC 133 (River Road) from the Rabon Way SE to the interchange at US 17/74/76	\$ 34,401,000	43.86	0	100	100	10	56.4	19.54	8	20	0	56.2		
30	B141322	Bike&Ped, Division Needs		Clarendon Avenue Multi-Use Path and 5th Street Sidewalk	SR1573 (Dow Road)	Cape Fear Boulevard	Construct a multi-use path on Clarendon Avenue from SR1573 Dow Road to S 5th Street and a sidewalk along 5th Street from Clarendon Avenue to Cape Fear Boulevard	\$ 361,000	0	0	100	100	10	46.7	24.7	11	10	10	54.3		
31	B141916	Bike&Ped, Division Needs		SR 1492 Masonboro Loop Road MUP	(Andrews Reach Loop)	Parsley Elementary School	Construct a multi-use path from Andrew's Reach Loop to Parsley Elementary School	\$ 152,000	0	0	100	100	10	46.7	24.64	11	20	0	54.3		
32	H110991	Division Needs		Kerr Avenue Extension	SR 1411 (Wrightsville Avenue)	US 76 (Oleander Drive)	Construct Extension of Existing Roadway on New Location	\$ 13,191,000	55.02	0	0	100	30	41.1	28.94	13	20	0	53.6		
33	B141813	Bike&Ped, Division Needs		Brunswick Nature Park MUP	(Clarendon Road SE)	(Ocean Gate Plaza)	Construct a multi-use path between Westgate at Ocean Gate Plaza and Brunswick Nature Park at Clarendon Road SE in Brunswick County	\$ 2,030,000	0	0	100	100	10	46.7	22.24	10	20	0	53.3		
34	H129648	Division Needs	U-4436	I-140/Wilmington Bypass at Blue Clay Road Interchange	SR 1318 (Blue Clay Road)		Convert Grade Separation to interchange	\$ 10,800,000	20.57	100	0	100	10	51.2	16.88	7	20	0	52.6		
35	B141816	Bike&Ped, Division Needs		Ogden Park Multi-Use Path	(Olsen Park Lane)	SR2777 (Ogden Park Drive West)	Construct a multi-use path between Olsen Park, Smith Creek Park, and Ogden Park	\$ 1,269,000	0	0	100	100	10	46.7	21.19	9	20	0	52.3		
36	H111303	Division Needs	R-4063	Village Road Widening Phase II	West of SR 1437 (Old Fayetteville Road)	SR 1438 (Lanvale Road)	Widen to Multi-Lanes with bicycle accommodations	\$ 20,850,000	25.79	100	0	100	10	52.4	15.98	6	20	0	52.2		
37	H141231	Statewide Mobility		US76/Oleander Drive at US117/NC132/College Road Interchange	US117/NC132 (College Road)	US76/Oleander Drive	Convert at-grade intersection to a SPUI	\$ 25,110,000	90.15	100	0	100	10	66.7	38.4	18	0	0	51.4		
38	B141819	Bike&Ped, Division Needs		Pleasure Island Greenway MUP	(Grenville Ave)	(Alabama Ave)	Construct a multi-use path from Greenville Avenue to Alabama Avenue in Carolina Beach	\$ 471,000	0	0	100	100	10	46.7	21.05	8	20	0	51.3		
39	H110981	Regional Impact		US421TRUCK/South Front Street Widening	US 17 Business/76/421 (Cape Fear Memorial Bridge)	US 421 (Burnett Boulevard)	Widen to Four Lane Divided Arterial, Add Multi-Use Path and Sidewalk	\$ 9,952,000	45.57	0	0	100	10	34.6	30.04	14	20	0	51.3		

	SPOT ID	Project Category	TIP	Project Name	From	To	Description	NCDOT Estimate	Reduces Mean Travel Time	Reduces Conflicts	Included Access to Multimodal Transportation	Adopted Local Support	Prioritization 2.0 Points	Local Preference Total	SPOT 3.0 Score (Division)	SPOT Sliding Scale (Division)	Consistency with Plans	Status of Prevailing Conditions	Total (Division)	WMPO Recommendation	Project Justification
									Data Out of 100	(Yes/No) * Yes= 100 No = 0	(Yes/No) * Yes= 100 No = 0	(Yes/No) * Yes= 100 No = 0	Points 50 or 30 or 10	Points Out of 100	20%	20%	20%	10%	100%		
40	T130053	Division Needs		Wilmington-Multimodal Facility			Renovation of contributing historical structures for transit portion of Downtown Wilmington Multimodal Transportation Center. Property for transit and rail portion of the project purchased by NCDOT and City of Wilmington and owned by NCDOT. Transit portion would encompass downtown transfer location for Wave Transit with over 10,000 monthly passengers. Project would include office and meeting space for Wilmington Urban Area MPO.	\$ 686,000	0	0	100	100	50	55.6	9.36	3	20	0	50.8		
41	H110993	Division Needs		Kerr Avenue Widening	Patrick Avenue	SR 1411 (Wrightsville Avenue)	Widen Arterial from Two to Four Lanes with a Median	\$ 49,197,000	46.17	0	0	100	10	34.7	27.61	13	20	0	50.4		
42	B141254	Bike&Ped, Division Needs		Pine Grove Drive Bicycle Lanes	Holly Tree Road	Andrews Reach Loop	Construct bicycle lanes on Pine Grove Drive from Holly Tree Road to Andrews Reach Loop	\$ 498,000	0	0	100	100	10	46.7	18.07	7	20	0	50.3		
43	H090360	Regional Impact	U-2724	NC133/Castle Hayne Road Widening	US 74 (Martin Luther King, Jr. Parkway)	SR 1002 (Holly Shelter Road)	US 74 (Martin Luther King, Jr. Parkway) to SR 1002 (Holly Shelter Road) at Castle Hayne and Along SR 1002 to I-40. Widen to Multi-Lanes.	\$ 111,437,000	49.09	0	0	100	10	35.4	25.93	12	20	0	49.7		
44	H110988	Regional Impact		US421/Carolina Beach Road Streetscape	US 117 (Shipyard Boulevard)	George Anderson Drive	Upgrade Arterial By Adding a Landscaped Median	\$ 8,066,000	53.15	0	0	100	10	36.3	24.94	11	20	0	49.1		
45	H090721	Division Needs		North 23rd Street Widening	US 74 (Martin Luther King, Jr. Parkway)	NC 133 (Castle Hayne Road)	Widen North 23Rd Street from US 74 (Martin Luther King, Jr. Parkway) to NC 133 (Castle Hayne Road).	\$ 8,692,000	51.52	0	0	100	10	35.9	22.07	10	20	0	47.9		
46	H090803	Statewide Mobility		US17 Safety Improvements to Onslow County Line	Wilmington Bypass	Onslow County Line	Improve Safety and Preserve the Capacity of the Highway from the Mpo Boundary to the onslow County Line (Tip # Fs-0803B).	\$ 148,089,000	26.63	100	0	100	50	61.5	17.01	7	10	0	47.7		
47	H090722	Division Needs		Plantation Road	Military Cutoff Road Extension	Market Street	Construct a Route on New Location from Military Cutoff Road Extension to Market Street	\$ 14,289,000	36.52	0	0	100	10	32.6	20.4	9	20	0	45.3		
48	H141226	Statewide Mobility		US74/MLK Parkway at US117/NC132/College Road Interchange	US117/NC132 (College Road)	US74/MLK Parkway	Convert at-grade intersection to a SPUI	\$ 25,110,000	59.97	100	0	100	10	60.0	31.53	15	0	0	45.0		
49	H141537	Statewide Mobility		US17 Improvements through Hampstead	near SR 1582 (Washington Acres Road)	Near SR 1563 (Sloop Point Loop Road)	Construct a super-street design	\$ 19,410,000	67.54	100	0	0	10	39.5	31.9	15	10	0	44.7		
50	B141319	Bike&Ped, Division Needs		Old Fayetteville Road Multi-Use Path	(Pickett Road)	US74/76 (Andrew Jackson Highway)	Construct a multi-use path along Old Fayetteville Road from Pickett Road to US74/76 Andrew Jackson Highway	\$ 204,000	0	0	100	100	10	46.7	25.38	11	10	0	44.3		
51	H140400	Division Needs		SR-1114 Blueberry Road Widening	US 421	NC 210	Modernize roadway to improve traffic safety from two 9-10 foot lanes to two 12-foot lanes with 5-foot paved shoulders, per Pender Co. CTP.	\$ 4,103,000	5.98	100	100	100	10	70.2	11.04	4	5	0	44.1		
52	B141815	Bike&Ped, Division Needs		SR1455 (Porters Neck Road) Multi-Use Path	US17 (Market Street)	SR1363 (Bayshore Dr)	Construct a multi-use path along SR1455 Porters Neck Road from US17 Market Street to SR1363 Bayshore Drive	\$ 4,466,000	0	0	100	100	10	46.7	22.23	10	10	0	43.3		
53	H090287-A	Statewide Mobility	R-4462	US74 Upgrade	Whiteville	I-140/US 17 Wilmington Bypass	Upgrade Roadway to interstate Standards	\$ 54,000,000	17.65	100	0	100	50	59.5	9.35	3	10	0	42.7		

	SPOT ID	Project Category	TIP	Project Name	From	To	Description	NCDOT Estimate	R e d u c e s M e a n T r a v e l T i m e	R e d u c e s C o n f l i c t P o i n t s	I n c l u d e A s c c M o u m l t o i d - a m t o d o a n l s	A d o p t e d L o c a l S u p p o r t	P r i o r i t i z a t i o n 2 . 0 P o i n t s	L o c a l P r e f e r e n c e T o t a l	S P O T 3 . 0 S c o r e (D i v i s i o n)	S P O T S l i d (D i n g v i S s c i a o l n e)	C o n s i s t e n c y w i t h P l a n s	S t a t u s o f D P e r v o e j l e o c p t m e i n n t	T o t a l (D i v i s i o n)	W M P O R e c o m m e n A d l e d o c P a t i o n t	P r o j e c t J u s t i f i c a t i o n
									50%	20%	20%	20%	10%	100%							
									Data	(Yes/No)	(Yes/No)	(Yes/No)	Points	Points		Sliding					
									Out of 100	* Yes= 100 No = 0	* Yes= 100 No = 0	* Yes= 100 No = 0	50 or 30 or 10	Out of 100		Scale of 1- 20	Out of 20	Out of 10	Out of 100		
54	B141263	Bike&Ped, Division Needs		Holly Shelter Road Sidewalk	NC133 (Castle Hayne Road)	(Roger Haynes Drive)	Construct a sidewalk along SR1002 Holly Shelter Road from NC133 Castle Hayne Road to Roger Haynes Drive	\$ 263,000	0	0	100	100	30	51.1	17.83	7	10	0	42.6		
55	H090718	Division Needs		Masonboro Loop Extension	Sanders Road	Piner Road	Construct a New Route on New Location from Carolina Beach Road (US 421) to Piner Road	\$ 7,098,000	47.92	0	0	100	10	35.1	14.13	5	20	0	42.5		
56	B141823	Bike&Ped, Division Needs		NC133 (River Road) Multi-Use Path	SR1554 (Old River Road)	(Morecamble Boulevard)	Construct a multi-use path along NC133 River Road from Old River Road to Morecamble Boulevard with crosswalks at Belville Elementary School and at Morecamble Boulevard	\$ 352,000	0	0	100	100	10	46.7	19.52	8	10	0	41.3		
57	H141235	Regional Impact		NC210 at Island Creek Road Intersection Improvements	SR1002 (Island Creek Rd)		Improve safety at intersection of NC210 and SR1002 Island Creek Road in Pender County	\$ 1,240,000	18.15	100	0	100	10	50.7	14.03	5	10	0	40.3		
58	H090717	Regional Impact		US421/Carolina Beach Road Widening	Sanders Road	Piner Road	Widen Carolina Beach Road from Sanders Road to College Road/NC 132/Piner Road	\$ 9,574,000	87.12	0	0	100	30	48.2	33.74	16	0	0	40.1		
59	H110974	Division Needs		Cape Fear Riverway	Independence Boulevard	US 421 (Snows Cut Bridge Road)	Widen from 2 to 4 Lane Highway with Portions Constructed As 4 Lane Highway on New Location, with a Multi-Use Path	\$ 115,483,000	19.08	0	0	100	10	28.7	13.85	5	20	0	39.3		
60	R140031	Statewide Mobility		Construct Track and/or Structure Improvements (Freight Service)			Restoration of the Wallace to Castle Hayne Rail Corridor from just north of Wilmington to Wallace.	\$ 118,250,000	0	0	0	100	10	24.4	17.44	7	20	0	39.2		
61	H141534	Statewide Mobility		US17BUS/Market Street at US17BYP/Wilmington Bypass Interchange	US17BUS/Market Street	US17BYP/Wilmington Bypass	Reconfigure ramps & add multi-lane northbound ramp from US 17 Business onto US 17.	\$ 8,370,000	48.43	100	0	100	10	57.4	22.34	10	0	0	38.7		
62	H141233	Division Needs		SR-1437 Old Fayetteville Road Widening	US74/76 (Andrew Jackson Highway)	SR1472 (Village Road)	Widen Old Fayetteville Road from SR1472Village Road to US74/76 Andrew Jackson Highway interchange	\$ 15,391,000	20.27	0	100	100	10	51.2	16.63	7	5	0	37.6		
63	H141187	Division Needs		Basin Street to Graham Street Connection	SR1437 (Old Fayetteville Road)	SR1472 (Village Road)	Construct a project on new location from SR1437 (Old Fayetteville Road) at Basin St NE to SR1472 (Village Road) at Graham Dr NE in Leland, NC.	\$ 8,325,000	25.82	0	100	100	10	52.4	16.13	6	5	0	37.2		
64	H090714	Statewide Mobility		Scientific Park Drive Extension	23rd Street	Creekwood Neighborhood	Construct the Extension of Scientific Park Drive from 23Rd Street to the Creekwood Neighborhood. This Will Allow the Closure of the only Existing Access on Martin Luther King Jr. Parkway Which Will Allow It to Become a Fully Controlled Access Facility	\$ 9,006,000	30.00	100	0	100	30	57.8	16.62	7	0	0	35.9		
65	H090712	Regional Impact		US117 and NC133 Roundabout	US117	NC133	Construct a Roundabout at the intersection of US 117 and NC 133	\$ 775,000	44.12	100	0	0	10	34.2	26.03	12		0	29.1		
66	H090724	Division Needs		New Route between Mt. Misery Road and Cedar Hill Road	Mount Misery Road	Cedar Hills Road	Construct New Route	\$ 14,495,000	11.42	0	0	100	10	27.0	7.97	2	10	0	25.5		
67	H090725	Division Needs		Magnolia Drive Extension	Mount Misery Road	Old Mill Road	Constuct An Improved Facility Between Mt. Misery Road and Old Mill Road	\$ 8,034,000	10.47	0	0	100	10	26.8	5.8	1	10	0	24.4		
68	H090291	Division Needs	R-4708	SR-1573 Dow Road	US 421 in Carolina Beach	US 421 in Kure Beach	Widen to Multi-Lanes	\$ 27,930,000	21.79	0	100	0	50	38.2	14.28	5		0	24.1		
69	H090261	Division Needs	R-3824	SR-1644 Extension	NC 210	SR 1569 (Hoover Road)	NC 210 to SR 1569 (Hoover Road). Upgrade Roadway to Secondary Standards, Some New Location.	\$ 9,576,000	0.00	0	0	100	10	24.4	5.52	1	10	0	23.2		

	SPOT ID	Project Category	TIP	Project Name	From	To	Description	NCDOT Estimate	Reduces Mean Travel Time	Reduces Conflicts	Included Access Movements to and from lands	Adopted Local Support	Prioritization 2.0 Points	Local Preference Total	SPOT 3.0 Score (Division)	SPOT Sliding (Division)	Consistency with Plans	Status of Prevailing Conditions	Total (Division)	WMPO Recommendation and Allocation	Project Justification
									Data	(Yes/No) * Yes= 100 No = 0	(Yes/No) * Yes= 100 No = 0	(Yes/No) * Yes= 100 No = 0	Points 50 or 30 or 10	Points Out of 100	50% 20%	20% 20%	20% Out of 20	10% Out of 10	100% Out of 100		
									Out of 100							Sliding Scale of 1-20					
70	F130015	Regional Impact		Southport - Ft Fisher (NC 211)			Port Expansion: Additional Mooring Facilities to future additional boat	\$ 1,500,000	8.9	0	0	100	10	26.4	14.7	6	0	0	19.2		
71	F130016	Division Needs		Southport - Ft Fisher (NC 211)			New River Class Vessel (to increase capacity)	\$ 12,000,000	8.9	0	0	100	10	26.4	14.7	6	0	0	19.2		
72	A130507	Statewide Mobility		TAXIWAY A AND H WIDENING AND PAVED SHOULDERS			The airport has had plans to widen the North - South TWY system to make the width consistent throughout. Currently the TWY systemwidth ranges from 51- to 75 feet. The project will also add shoulders and to keep the TWY lights on pavement to reduce mowing andmaintenance. (includes Project Request Numbers: 2988)	\$ 500,000	0	0	0	100	10	24.4	15.76	6	0	0	18.2		
73	H090720	Division Needs		River Road Relocation	South of Shipyard Boulevard	River Road	Relocate River Road South of Shipyard Boulevard to River Road	\$ 4,267,000	18.57	0	0	0	10	6.3	5.16	1	0	0	4.2		

**WILMINGTON URBAN AREA METROPOLITAN PLANNING ORGANIZATION
TRANSPORTATION ADVISORY COMMITTEE**

**RESOLUTION APPROVING THE FINAL RANKING AND SCORING FOR PROJECTS IN
PRIORITIZATION 3.0**

WHEREAS, the Wilmington Urban Area Metropolitan Planning Organization provides transportation planning services for the City of Wilmington, Town of Carolina Beach, Town of Kure Beach, Town of Wrightsville Beach, Town of Belville, Town of Leland, Town of Navassa, New Hanover County, Brunswick County, Pender County, Cape Fear Public Transportation Authority and the North Carolina Board of Transportation; and

WHEREAS, the Strategic Transportation Investments is a new formula to determine how the North Carolina Department of Transportation (NCDOT), in partnership with local governments, will fund and prioritize transportation projects in the state of North Carolina; and

WHEREAS, Metropolitan Planning Organizations (MPOs), Rural Planning Organizations (RPOs) and Division Engineers will assign local input points to projects in the Regional and Division tiers; and

WHEREAS, the Wilmington MPO adopted a Local Input Methodology on February 26, 2014; and

WHEREAS, the Wilmington MPO will allocated 1,500 points at the Regional tier and 1,500 points at the Division tier; and

WHEREAS, the Wilmington MPO has reviewed the projects in Prioritization 3.0 and consistent with the approved methodology assigned a draft ranking and scoring to these projects in the Prioritization 3.0 process on July 23, 2014; and

WHEREAS, the Wilmington MPO conducted a public comment period as outlined in the adopted Local Input Methodology.

NOW THEREFORE, be it resolved that the Wilmington Metropolitan Planning Organization's Transportation Advisory Committee hereby approves the final ranking and scoring for projects at the Regional tier and Division tier for Prioritization 3.0.

ADOPTED at a regular meeting of the Wilmington Urban Area Metropolitan Planning Organization Transportation Advisory Committee on August 27, 2014.

Laura Padgett, Chair
Transportation Advisory Committee

Mike Kozlosky, Secretary

**WILMINGTON URBAN AREA METROPOLITAN PLANNING ORGANIZATION
TRANSPORTATION ADVISORY COMMITTEE**

**RESOLUTION SUPPORTING THE USE OF FUNDS FROM THE UPWP TO UPDATE THE US
17 BUSINESS CORRIDOR STUDY**

WHEREAS, the Wilmington Urban Area Metropolitan Planning Organization provides transportation planning services for the City of Wilmington, Town of Carolina Beach, Town of Kure Beach, Town of Wrightsville Beach, Town of Belville, Town of Leland, Town of Navassa, New Hanover County, Brunswick County, Pender County, Cape Fear Public Transportation Authority and the North Carolina Board of Transportation; and

WHEREAS, the US 17 Business Corridor Study, undertaken by STV/Ralph Whitehead Associates, Inc. was adopted by the Wilmington MPO's Transportation Advisory Committee on May 30, 2007 and by the Wilmington City Council on July 10, 2007; and

WHEREAS, the study recommended that following the construction of Independence Boulevard extension, the conversion of Market Street to a median-divided facility with one vehicle lane in each direction, bicycle lanes and limited parking at designated locations along the corridor; and

WHEREAS, a key requirement of the recommendation was that any conversion was to be contingent upon first completing Independence Boulevard extension from Randall Parkway to the Martin Luther King Jr. Parkway; and

WHEREAS, the Independence Boulevard extension project is currently unfunded in the State Transportation Improvement Program (STIP); and

WHEREAS, despite this recommended requirement, many citizens have continued to request the implementation of the "road diet" on Market Street; and

WHEREAS, an update to this study would determine whether traffic volumes and patterns have significantly changed since 2007 to warrant a reconsideration of this requirement; and

WHEREAS, on August 5, 2014 the City of Wilmington requested the Wilmington MPO update the US 17 Business Corridor Study to re-examine the conditions in the study corridor and specifically the feasibility of implementing a "road diet" on US 17 Business (Market Street) without first connecting the Independence Boulevard extension and the Council allocated City funds in the amount \$15,000 to assist in the update of the study; and

WHEREAS, the adopted Unified Planning Work Program includes funds in the Special Studies line item for consultants to be contracted to assist in the completion of the special studies for the MPO.

NOW THEREFORE, be it resolved by the Wilmington Urban Area Metropolitan Planning Organization's Transportation Advisory Committee hereby supports the utilization of funds from the Unified Planning Work Program's Special Studies line item to update the US 17 Business Corridor Study.

ADOPTED at a regular meeting of the Wilmington Urban Area Metropolitan Planning Organization Transportation Advisory Committee on August 27, 2014.

Laura Padgett, Chair
Transportation Advisory Committee

Mike Kozlosky, Secretary

**WILMINGTON URBAN AREA METROPOLITAN PLANNING ORGANIZATION
TRANSPORTATION ADVISORY COMMITTEE**

**RESOLUTION SUPPORTING THE USE OF FUNDS FROM THE UPWP TO UPDATE THE
COASTAL PENDER COLLECTOR STREET PLAN**

WHEREAS, the Wilmington Urban Area Metropolitan Planning Organization provides transportation planning services for the City of Wilmington, Town of Carolina Beach, Town of Kure Beach, Town of Wrightsville Beach, Town of Belville, Town of Leland, Town of Navassa, New Hanover County, Brunswick County, Pender County, Cape Fear Public Transportation Authority and the North Carolina Board of Transportation; and

WHEREAS, in August 2006, the Wilmington MPO expanded the MPO's planning area boundary to encompass a portion of Coastal Pender County along the US Highway 17 corridor in Hampstead and Scott's Hill; and

WHEREAS in May 2007, the Pender County Board of Commissioners and Wilmington MPO's TAC adopted the "Coastal Pender Collector Street Plan" to outline a future transportation network to accommodate all modes of transportation; and

WHEREAS, in 2012 the Wilmington MPO's planning area boundary was expanded to include southern US Hwy 421 near the Pender Commerce Park as well as a majority of the Rocky Point area along the NC 210 corridor; and

WHEREAS, on February 18, 2014 the Pender County Board of Commissioners requested that the Wilmington MPO develop a collector street plan for the recently amended jurisdictional boundary; and

WHEREAS, Pender County has included funds in their adopted FY 2015 budget to assist in updating the Coastal Pender Collector Street Plan; and

WHEREAS, the adopted Unified Planning Work Program includes funds in the Special Studies line item for consultants to be contracted to assist in the completion of the special studies completed for the MPO.

NOW THEREFORE, be it resolved by the Wilmington Urban Area Metropolitan Planning Organization's Transportation Advisory Committee hereby supports the utilization of funds from the Unified Planning Work Program's Special Studies line item to update the Coastal Pender Collector Street Plan.

ADOPTED at a regular meeting of the Wilmington Urban Area Metropolitan Planning Organization Transportation Advisory Committee on August 27, 2014.

Laura Padgett, Chair
Transportation Advisory Committee

Mike Kozlosky, Secretary

North Carolina Department of Transportation
Transportation Mobility and Safety Division

Route Change Request Form

This form shall be completed for all route number change requests affecting Interstates and Primary (US and NC) routes and submitted to the Staff Engineer of the Transportation Mobility and Safety Division (TMSD). A map (or maps) shall also be attached indicating the affected counties and routes.

Route Number/s: US 17/US 17 Business

County/s: New Hanover/Brunswick

Division/s: 3 TIP Project/s: _____

General description of request (starting/ending points, etc.):

US 17 begins at milepost 15.80 near Market Street (US 17 Business) and runs along Market Street (US 17 Bus) to milepost 8.931 at SR 1409 (Military Cutoff Road), then US 17 shall run concurrent with SR 1409 between milepost 0.000 at Market St. and milepost 2.609 at US 74 (Eastwood Rd); then along US 76 (Oleander Dr./Wooster/Dawson/Andrew Jackson Hwy) between milepost 8.601 at US 74 (Eastwood Rd) and milepost 0.000 at the Brunswick CL. US 76 between New Hanover CL MP 15.467 and MP 14.804.

Total length = 15.628 miles

Reason/Justification for this route change:

With the routing of NC-140 and eventually a complete I-140 to the north of Wilmington, US 17 should be routed into the developed section of New Hanover County to better serve industry and commerce. This routing will allow US 17 Business to remain on Market Street from SR 1409 (Military Cutoff Road) to US 76 Couplet (Dawson and Wooster Streets) in Wilmington.

Requestor Name: Robert Coke Gray III Date: 06/17/14

Requestor Signature: *Robert Coke Gray III*

State Traffic Engineer (initial approval): *[Signature]* Date: 6/19/2014

Attachments: Map/s

cc: Ordinance Program Coordinator

June 6, 2011



STATE OF NORTH CAROLINA
DEPARTMENT OF TRANSPORTATION


PATRICK L. MCCRORY
GOVERNOR

ANTHONY J. TATA
SECRETARY

June 17, 2014

MEMORANDUM

TO: Renee B. Roach, P.E.
Traffic Engineering & Safety Systems Branch Staff Engineer

FROM: R. Coke Gray, P.E.
Cape Fear Regional Traffic Engineer 

SUBJECT: Request to Reroute US 17 and US 17 Business in New Hanover County

Attached is a request to reroute US 17 between the northern terminus of US 17 Business and US 74/76 in Brunswick County. The route will traverse the Wilmington Corporate Limits.

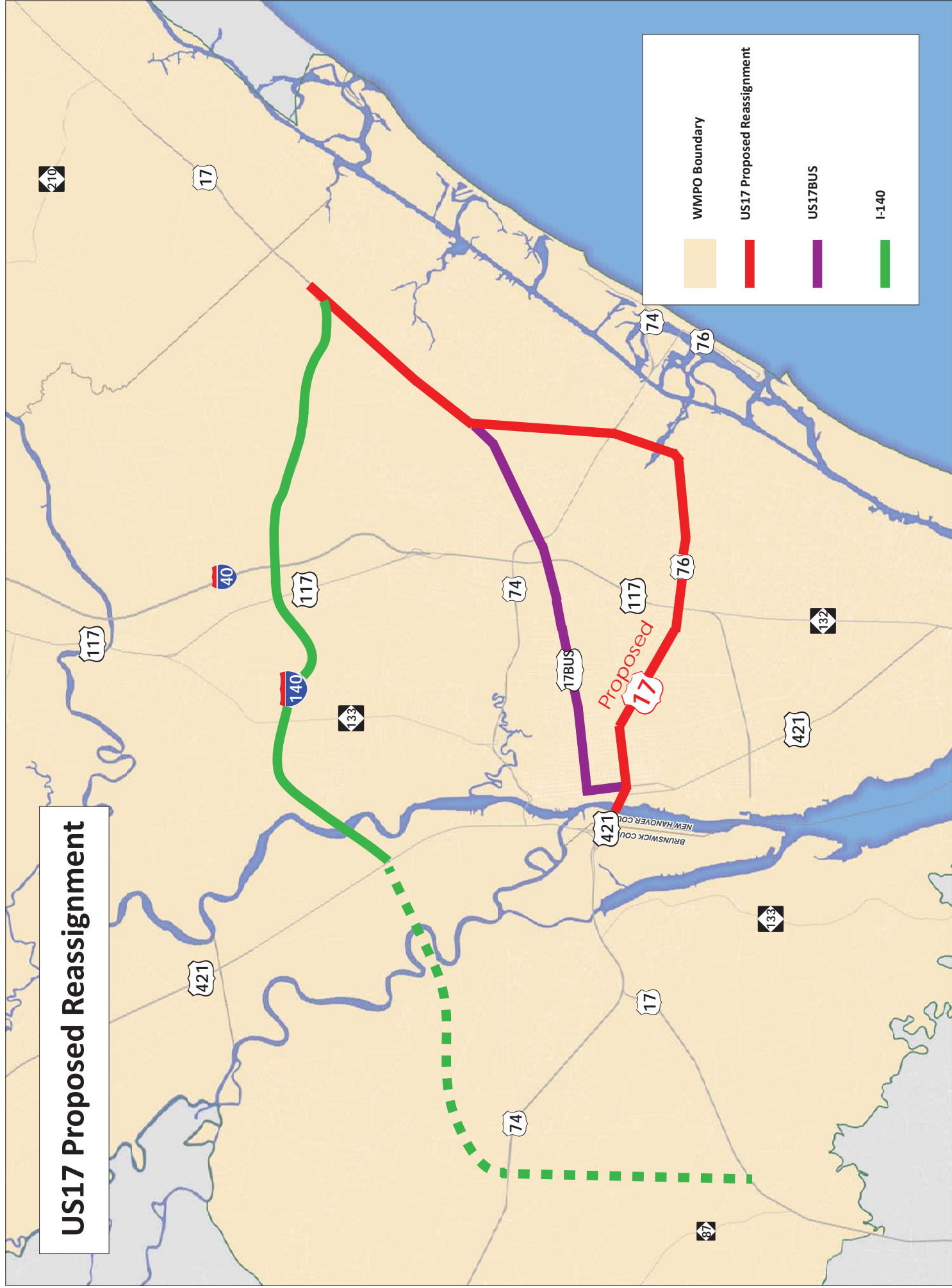
Please let me know if you have any questions or need additional information for this request.

RCG:cg

Attachments

Cc w/att: J.K. Lacy, P.E.
K.E. Fussell, P.E.
T.M. Hopkins, P.E.
P.H. Daughtry, III, P.E.
C.D. Kimes, P.E.
R.W. King, P.E.
K.E. Hite, P.E.
R.J. Jaeger, P.E.
L.N. Avery

US17 Proposed Reassignment



**WILMINGTON URBAN AREA METROPOLITAN PLANNING ORGANIZATION
TRANSPORTATION ADVISORY COMMITTEE**

**RESOLUTION SUPPORTING NCDOT'S EFFORTS TO RE-ASSIGN THE US 17
DESIGNATION TO VARIOUS STREETS IN NEW HANOVER COUNTY AND THE
CITY OF WILMINGTON**

WHEREAS, the Wilmington Urban Area Metropolitan Planning Organization provides transportation planning services for the City of Wilmington, Town of Carolina Beach, Town of Kure Beach, Town of Wrightsville Beach, Town of Belville, Town of Leland, Town of Navassa, New Hanover County, Brunswick County, Pender County, Cape Fear Public Transportation Authority and the North Carolina Board of Transportation; and

WHEREAS, with the re-routing of NC-140 and eventual completion of I-140 to the north of Wilmington, US 17 should be routed into the developed section of New Hanover County to better serve industry and commerce; and

WHEREAS, this routing will allow US 17 Business to remain on Market Street from SR 1409 (Military Cutoff Road) to 16th Street and 17th Street in Wilmington; and

WHEREAS, NCDOT's description of the request is to route the designation with: US 17 begins at milepost 15.80 near Market Street (US 17 Business) and runs along Market Street (US 17 Business) to milepost 8.931 at SR 1409 (Military Cutoff Road), then US 17 shall run concurrent with SR 1409 between milepost 0.000 at Market Street and milepost 2.609 at US 17 (Eastwood Road) then along US 76 (Oleander Drive/Wooster Street/Dawson Street/Andrew Jackson Highway) between milepost 8.601 at US 74 (Eastwood Road) and milepost 0.000 Brunswick CL. US 76 between New Hanover CL MP 15.467 and MP 14.804; and

WHEREAS, the Wilmington MPO's Transportation Advisory Committee finds it important to consider the North Carolina Department of Transportation's proposals to re-route designations in the Wilmington MPO's planning area boundary; and

WHEREAS, the proposal would route the US 17 designation into developed sections of New Hanover County and the City of Wilmington.

NOW THEREFORE, be it resolved by the Wilmington Urban Area Metropolitan Planning Organization's Transportation Advisory Committee hereby supports the re-assignment of the US 17 designation as proposed by NCDOT to certain streets in New Hanover County and the City of Wilmington.

ADOPTED at a regular meeting of the Wilmington Urban Area Metropolitan Planning Organization Transportation Advisory Committee on August 27, 2014.

Laura Padgett, Chair
Transportation Advisory Committee

Mike Kozlosky, Secretary

Proposed Revisions to 2012-2020 STP Program

STIP/MTIP Modifications (August)

U-4751
NEW HANOVER
PROJECT J. CATEGORY
STATEWIDE

WILMINGTON URBAN AREA
METROPOLITAN PLANNING ORGANIZATION

SR 1409 (MILITARY CUTOFF ROAD EXTENSION), SR
1409 (MILITARY CUTOFF ROAD) TO US 17 IN
WILMINGTON. MULTI-LANES ON NEW LOCATION.
**DELAY CONSTRUCTION FROM FY 17 TO FY 18 FOR
PLANNING AND DESIGN.**

RIGHT-OF-WAY	FY 2015 - \$22,500,000 (T)
	FY 2016 - \$22,500,000 (T)
UTILITIES	FY 2015 - \$650,000 (T)
MITIGATION	FY 2016 - \$3,271,000 (T)
CONSTRUCTION	FY 2018 - \$14,750,000 (T)
	FY 2019 - \$14,750,000 (T)
	FY 2020 - \$14,750,000 (T)
	FY 2021 - \$14,750,000 (T)
	\$107,921,000

WILMINGTON MPO
TRANSPORTATION PLANNING
AUGUST 2014

CROSSING OVER THE CAPE FEAR RIVER

Project Description/Scope: Construct a new crossing over the Cape Fear River that will link from in the vicinity of US 17 to Independence Boulevard and Carolina Beach Road. On January 30, 2013 the Wilmington MPO's TAC formally created a work group to assist in the development of the project.

Next Steps:

- A summary report detailing conclusions of the Red-cockaded Woodpecker and Bald Eagle field surveys has been finalized
- The draft Natural Resources Technical Report (NRTR) is under review by NCDOT. It is anticipated this report will be finalized within the next few months.
- Functional Design Plans for the 12 detailed study alternatives (DSAs) are under development. Draft designs are anticipated to be submitted to NCDOT for review in the fall.
- The draft updated Traffic Forecast Report is under review by NCDOT.
- Traffic capacity analyses have begun. It is anticipated a draft Traffic Capacity Analysis will be submitted to NCDOT for review in the fall.
- Initial hydraulic analysis of the DSAs is currently being scoped and work is anticipated to begin next month.
- Initial field surveys have been completed for the Historic Architecture Survey Report. It is anticipated the draft report will be submitted to NCDOT for review next month.
- The NCDOT continues to work through the environmental review process. The Record of Decision is expected in 2017.

CONGESTION MANAGEMENT PROCESS

Project Description/Scope: Comply with a Federal mandate to create and adopt a process to evaluate the region's most congested corridors through locally-defined multi-modal performance measures in an effort to suggest improvements that would alleviate traffic congestion in the region. The CMP was adopted by the TAC on December 11, 2013. Data collection procedures have been developed. A schedule for collection logistics has been drafted and data collection will continuously be monitored and updated as needed.

Next Steps:

- Continue data collection and monitoring of congestion

METROPOLITAN TRANSPORTATION PLAN

Project Description/Scope: Update the Federally-mandated Metropolitan Transportation Plan/Long-Range Transportation Plan for the Wilmington Urban Area Metropolitan Planning Organization. Project data was gathered and processed in March 2014. Fiscal analysis data collection commenced in March 2014. Modal subcommittees completed initial project recommendations in July 2014.

Next Steps:

- WMPO Travel Demand Model continues development through August 2014

- CAC, TCC, and TAC to review project lists and provide final recommendations for project prioritization through October 2014

17TH STREET STREETScape

Project Descriptions/Scope: The 17th Street streetscape project will include upgrades to 17th Street between Wrightsville Avenue and Princess Place Drive. The project will provide for a more efficient transportation system by reduced travel speeds, removal of the lateral shift, improved pedestrian crossings, improved safety and enhance the aesthetics of the area. The project may also include aesthetic improvements that will enhance the entryway into Carolina Heights and provide a pocket park. The City has completed the design plans and received an encroachment agreement from NCDOT.

Next Steps:

- Hold a public workshop. Staff is working to schedule this meeting in September.
- Construct the streetscape enhancements.

SITE DEVELOPMENT REVIEW

Project Descriptions/Scope: The Wilmington MPO assists with site development and transportation impact analysis review for the MPO's member jurisdictions. During the last month, staff has reviewed the following development proposals:

- New Hanover County Development Plan Reviews: 3 reviews
- New Hanover County Informal Plan Reviews: 1 reviews
- New Hanover Concept Reviews: 0 reviews
- Brunswick County Informal Plan Reviews 0 reviews
- TIA Reviews: 12 total (New Hanover County -4, City of Wilmington -6, and Brunswick County-1 and Carolina Beach- 1) new 5 and ongoing - 7
- Pender County Development Plan Reviews: 6 reviews
- Pender County Informal Plan Reviews: 1reviews
- City of Wilmington Formal Reviews: 19, (5 new, 14 on-going)
- City of Wilmington Informal Reviews: 10 (1 new, 9 on-going)
- City of Wilmington Concept Reviews: 8 new concept reviews- 2 on-going concept
- COW Project Releases: 1 Full releases

STP-DA/TAP-DA FY 2013 Project Status

STP-DA

U-5534A - TOWN OF NAVASSA – MAIN STREET BICYCLE LANES –This project will include planning, design, and construction of an additional 4 feet on either side of Main Street for bike lanes starting at the existing Navassa bike path east of Brooklyn Street to Old Mill Road. The Letter of Interest (LOI) has been advertised.

Next Steps:

- Town is preparing contract for Ramey Kemp
- Design Kickoff Meeting anticipated late August.
- Letting date anticipated in February 2015

U-5534B - CITY OF WILMINGTON- HEIDI TRASK DRAWBRIDGE – This project consists of construction of a public walkway/pier underneath the Heidi Trask Drawbridge to provide for a safe crossing for cyclists and pedestrians across US 74 (Wrightsville Avenue) on the mainland side of the drawbridge in Wilmington.

Next Steps:

- Design work is anticipated to be complete October 2014
- Letting date anticipated January 2015

U-5534C - WRIGHTSVILLE AVENUE/GREENVILLE AVENUE TO HINTON AVENUE – The project is for construction of intersection re-alignment improvements at the intersection of Wrightsville Avenue/Greenville Avenue and bike lanes and sidewalks along Greenville Avenue from Wrightsville Avenue to Hinton Avenue.

Next Steps:

- Inquiry with property owners about possibility of right-of-way acquisition is ongoing.
- Right-of-way acquisition is anticipated to begin in October 2014
- Letting date anticipated March 2015

U-5534D - TOWN OF LELAND - OLD FAYETTEVILLE ROAD MUP – This project is for design and construction of a ten foot (10') wide multi use path, separate but adjacent to Old Fayetteville Road, beginning at or around the corner of the Leland Town Hall Campus and ending at the driveway of the North Brunswick High School.

Next Steps:

- URS is in design
- Letting date is anticipated November 2014

U-5534E - TOWN OF CAROLINA BEACH - ISLAND GREENWAY AND HARPER AVENUE – This project is for the design and construction of an off-road multi-use path that begins at Mike Chappell Park and winds along the existing cleared fire path and terminates at Greenville Avenue and the Harper Avenue bike lanes will consist of a bicycle boulevard on existing pavement on each side of Harper Avenue from Dow Road to Lake Park Boulevard. The Town desires to combine the project with the awarded 2014 STP-DA project.

Next Steps:

- The LOI for professional engineering firms advertised. The LOI due date of August 22,2014
- U-5534 E and U-5534 L will be combined with a new Right of Way and Planning date of February 2015.

TAP-DA

CITY OF WILMINGTON – MILITARY CUTOFF ROAD MULTI-USE PATH – This project is for the design and construction of a10-foot wide, asphalt multi-use path on Military Cutoff Road from Gordon Road to Eastwood Road.

Next Steps:

- Schematic design underway for design alternates.
- Easement/ROW inquiry underway.

- Letting for construction is anticipated July 2015

SHIPYARD BOULEVARD SIDEWALK

Project Description: The construction of a sidewalk and bus pull-out along Shipyard Boulevard between Vance Street and Rutledge Drive. This will be a partnership between the City of Wilmington, Cape Fear Public Transportation Authority and Wilmington MPO.

Next Steps:

- TAC to consider STIP/MTIP amendment to allocate \$300,000 to the project
- Complete surveying and design

TRANSPORTATION DEMAND MANAGEMENT PROGRAM

Project Description/Scope: UNCW is taking the role as lead employer for the Cape Fear region. The WMPO will coordinate with UNCW to work with other major employers in the region to identify opportunities for public outreach, marketing, carpooling, vanpooling, alternative/compressed work schedules, Guaranteed Ride Home, park and ride lots, etc.

Next Steps:

- Finalize the draft 5-year TDM plan
- Continue drafting the 25-year TDM plan
- Begin developing the marketing plan for the 5-year TDM plan
- Finalize Park & Ride Lot locations for MTP
- Coordinate TDM strategies and recommendations with other MTP modal chapters



Cape Fear Public Transportation Authority

Project Update

August 2014

1. **Operations center** - (no change) construction of 37,621 square foot maintenance and operations facility located on Castle Hayne Road which will serve as operation center for all Wave Transit fixed route and Paratransit operations. Will include compressed natural gas fueling station. Estimated completion, fall 2014.
Project awarded to Clancy & Theys Construction of Wilmington
2. **Wavepool program** - vanpool program currently serving Elizabethtown and Jacksonville. Additional vanpools requested in Elizabethtown. Vanpool placed into service. Additional vans in process of being sited.
3. **Fleet replacement & conversion to CNG** - (no change) identifying state and federal funding opportunities to replace 17 thirty-five foot buses. FTA funding for 80% of two CNG buses has been identified under FTA §5316 and §5316 program and local funding is included in City of Wilmington FY 2015 budget. New buses to be fueled by compressed natural gas. Fleet replacement programmed at a cost of \$8,100,000. Bid awarded to Gillig, LLC on June 26, 2014. Purchase order for two buses issued on June 26, 2014. Delivery to be determined.
4. **Seahawk Station (Fisher University Union Transportation Hub Project)** - (no significant change) Hardware and benches installed. Programming complete. Opening in conjunction with UNCW fall semester.
5. **Interlocal Agreement** - (no change) The Authority is working with funding partners to develop an Interlocal agreement for public transportation services in the region. Wilmington City Attorney and New Hanover County Attorney have been tasked with drafting the Interlocal.
6. **FTA §5310 Program** - Designation from NC Governor as designated recipient for FTA §5310 Elderly and Disabled Transportation Program designated recipient completed in July. Authority staff in pre planning stage to determine distribution of funds and community outreach plan to develop a Locally Coordinated Plan (LCP) to allocate the funding. LCP will include a program of projects funded by the grant(s).
7. **Partnership with Carolina Beach** - to expand the regional footprint of public transportation service in the region, the Authority and Carolina Beach have begun discussions for a partnership on Route 301 with the Town of Carolina Beach. Project specifics are currently being developed.



STATE OF NORTH CAROLINA
DEPARTMENT OF TRANSPORTATION

PAT MCCRORY
GOVERNOR

ANTHONY J. TATA
SECRETARY

August 5, 2014

TIP Projects:

R-2633 AA & AB: (Wilmington Bypass) construct a 4-lane divided highway from US 17 (near Town Creek) to US 74/76 (near Malmo).

Revised Completion Date Fall 2014

R-3324 – Long Beach Road Extension construct a 2-lane, 2-way roadway from NC 133 (near Jump & Run Creek) to NC 87. Most of this roadway will be on new location.

Estimated Contract Completion Date May 13, 2016

R-2633 BB – (Wilmington Bypass) construct a 4-lane divided highway from SR 1430 (Cedar Hill Road) to US 421 (where I-140 currently ends in New Hanover County...this includes the large bridge over the Cape Fear River).

Estimated Contract Completion Date April 30, 2018

Open to traffic on November 1, 2017

R-2633 BA – (Wilmington Bypass) construct a 4-lane divided highway from US 74/76 (near Malmo) to SR 1430 (Cedar Hill Road).

Estimated Contract Completion Date April 30, 2018

Open to traffic on November 1, 2017

R-3432 – SR 1163 (Georgetown Road) extend from SR 1184 (Ocean Isle Beach Road) to NC 179.

Estimated Contract Completion Date May 13, 2016

R-3601 (US 17/74/76): Widening across the “causeway”, between Leland/Belville and the Cape Fear River. Replacing the bridges over the Brunswick River and one of the bridges over the Alligator Creek.

Estimated Contract Completion Date November 2016

B-4591: replace bridge #4 over Island Creek on SR 1002 (Holly Shelter Road/Island Creek Road)

Road closure has been delayed due to utility relocation issues

S, T. Wooten will have 154 days to complete project, once they have started the work

U-3338 B: Widening of Kerr Ave. from Randall Parkway to Martin Luther King, Jr. Parkway.

Let Date April 2015

B-5103: replace bridge #35 over the abandoned railroad on SR 1627 (3rd Street), in Wilmington.

Let Date February 2015

Military Cutoff Road Extension (U-4751): extending Military Cutoff Road from Market Street to the Wilmington Bypass, with an interchange at the Bypass.

Right of Way November 2014

R-5021 (NC 211): widening to a 4-lane divided highway from NC 87 (near Southport) to SR 1500 (Midway Road).

Post Year

B-4929: Bridge @ Surf City NC 50/210 - replace bridge #16 over the inter-coastal waterway with a fixed span high rise structure.

Right of Way is scheduled for February 20, 2015

Post Year

U-4434: Independence Blvd. Extension from Randall Parkway to MLK Parkway.

Post Year

R-3434 – SR 1500 (Midway Road) and SR 1401 (Galloway Road) widening Midway Road from NC 211 to US 17 Bypass.

Post Year

R-4063: widen SR 1472 (Village Road) from SR 1435 (South Navassa Road) to SR 1438 (Lanvale Road).

Post Year

R-3300 Hampstead Bypass: extending from Wilmington Bypass to US 17 north of Hampstead.
Post Year

U-5300: NC 132 (College Road) from SR 1272 (New Center Drive) to SR 2048 (Gordon Road) widen to multi-lanes.
Post Year

Division Projects & Maintenance Projects:

Thomas Rhodes Bridge: US 421 - this is the high rise fixed span bridge over the Cape Fear River, contractor will rehab the bridge deck & structure.
US 421 **northbound** contractor will not be able to close a lane of traffic from 6:00 AM to 6:00 PM.
US 421 **southbound** contractor will not be able to close a lane of traffic from 7:00 AM to 7:00 PM.

Estimated Contract Completion Date October 2014

G.V. Barbee Bridge: bridge over ICWW, contractor to rehab bridge deck and structure, at Oak Island.

Estimated Contract Completion Date October 2014

W-5306 Castle Hayne Roundabout: construct a roundabout at the intersection of US 117, NC 132 & NC 133.

Let Date September 4, 2014

Greenfield Lake Culvert: replace the large culvert under 3rd Street and US 421 Truck/Front Street...Utility relocation work will begin late 2013 and finish prior to let date

Let Date Tentative Fall/Winter 2014

Low Impact Bridge Program:

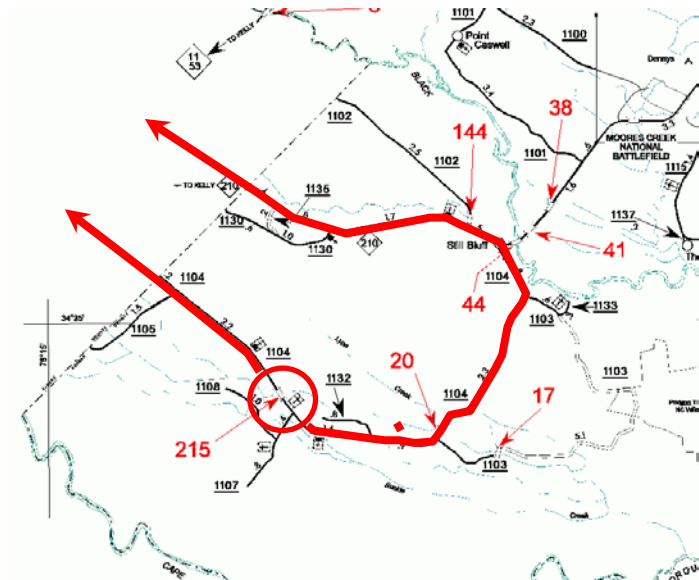
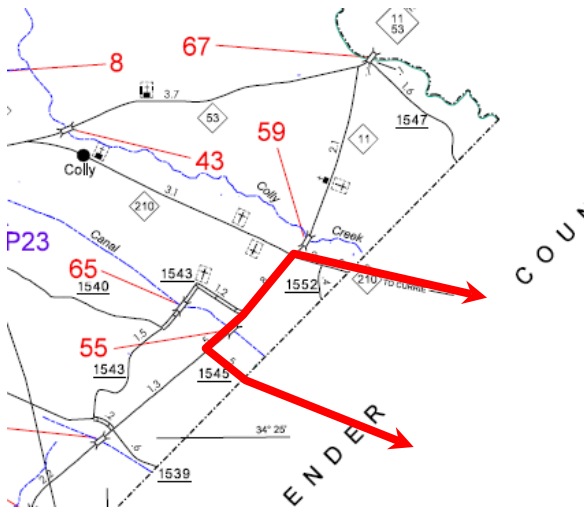
Design/Build contract to replace 9 bridges in Brunswick & Pender Counties:

Estimated Contract Completion Date November 1, 2015 (for all 9 bridge replacements)

17BP.3.R.26: replace bridge #215 over Buckle Creek on SR 1104 (Canetuck Road)

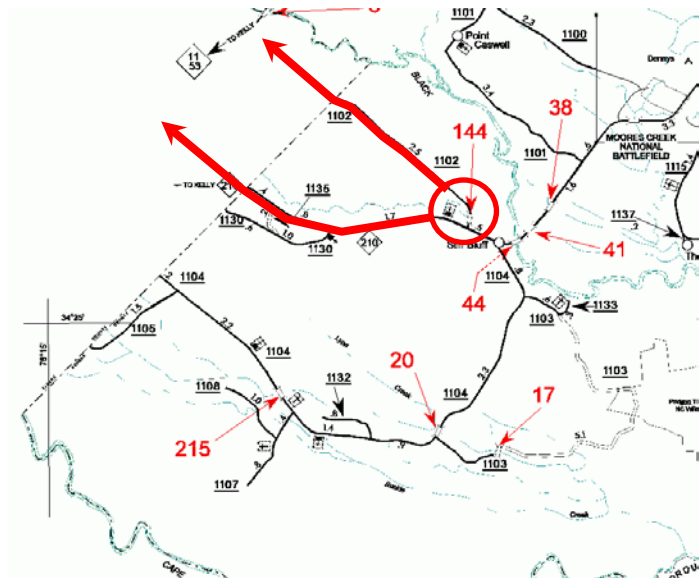
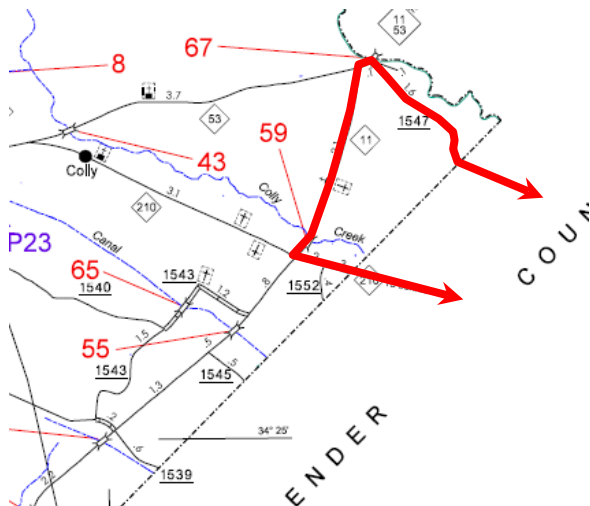
Pender Bridge 215

Detour Route



SR 1104 (Canetuck Road), Crossing into Bladen County SR 1545 (Still Bluff Road) to NC 11 () to NC 210() Crossing into Pender County back to SR 1104 (Canetuck Road)

Pender Bridge 144
Detour Route



SR 1102 (Morgan Road) to NC 210, crossing into Bladen County to NC 11 to NC 11 / 53
to SR 1547 (Kelly Road), crossing into Pender County SR 1102 (Morgan Road)

Resurfacing Contracts:

Contract C-203192 S.T. Wooten

New Hanover County 3CR.10651.138 & 3CR.201651.138

US 117/NC 132 (North College Road) Mill & resurface from SR 2048 (Gordon Road) to 0.18 mile south of SR 1322 (Murrayville Road)

US 74 (Eastwood Road) Mill & resurface from 0.17 mile west of SR 1409 (Military Cutoff Road) to 0.27 mile east of ICWW Bridge (Heidi Trask Bridge)

US 76 (Oleander Drive) Mill & resurface from 0.05 mile west of Hawthorne (non-system) to 0.15 mile south of US 74 (Eastwood Road)

US 117 (Shipyard Blvd) NBL & SBL lanes mill, widen, & resurface from 0.06 mile north of US 421 to NC 132

US 117/NC 132 (South College Road) mill & resurface from US 117 (Shipyard Blvd) to 0.07 mile south of SR 2313 (Wilshire Blvd)

SR 1175 (North Kerr Ave) resurface from 0.03 mile north of Green Tree Road (non-system) to SR 1322 (Bavarian Road)

SR 1302 (23rd Street) resurface from end of C&G (near waste water treatment facility) to NC 133 (Castle Hayne Road)

SR 1327 (Farley Road) resurface from SR 1322 (N. Kerr Ave.) to SR 1175 (Bavarian Road)

SR 1518 (Whipporwill Lane) resurface from SR 1492 (Masonboro Loop Road) to end of system

SR 1620 (Channel Haven Drive) resurface from SR 1492 (Masonboro Loop Road) to SR 1621 (Channel Haven)

SR 1621 (Channel Haven) resurface from SR 1622 (Aqua Drive) to SR 1623 (Marsh Hen Drive)

SR 1622 (Aqua Drive) resurface from SR 1621 to end of system

SR 1623 (Marsh Hen Drive) resurface from end of system to end of system

SR 1706 (Brighton Road) resurface from SR 1643 (Horndale Drive) to end of system

SR 1707 (Cornwell Court) resurface from SR 1706 to end of system

SR 2009 (Shelley Drive) resurface from SR 2006 (Browning Road) to SR 2016 (Lord Thomas Road)

SR 2217 (Golden Rod Drive) resurface from SR 2269 (Bird's Nest Court) to SR 2218 (Silkwood Court)

SR 2048 (Gordon Road) resurface from SR 1175 (Kerr Avenue) to US 117/NC 132 (N. College Road).

SR 2048 (Gordon Road) widen & resurface from US 117/NC 132 (N. College Rd.) to SR 2698 (Netherlands Drive).

US 76 (Oleander Drive) in west bound direction, install right turn lane onto northbound US 117/NC 132 (College Road).

Contract C-203192 (Continued)

Brunswick County 3CR.10101.138 & 3CR.20101.138

NC 133 widen & resurface from SR 1518 (Daws Creek Road) to 0.28 mile south of SR 1554 (Old River Road).

Contractor has completed asphalt work and will be reconstructing shoulders.

SR 1340 (Exum Road) mill patch from SR 1335 (Big Neck Road) to SR 1342 (Camp Branch Road)

SR 1119 (Stanley Road) widen & resurface from SR 1130 (Mt. Pisgah Road) to Cedar Grove Middle School.

SR 1132 (Civietown Road) widen & resurface from NC 130 to SR 1130 (Mt. Pisgah Road).

SR 1184 (Ocean Isle Beach Road) mill patch from US 17 to 0.27 mile from NC 179.

New Hanover & Pender County 46280.3.3

Interstate 40 mill & resurface all of the ramps & loops in New Hanover (excluding I-140 interchange) and Pender County.

Estimated Contract Completion Date Late Summer 2014

Resurfacing Contract: C-203480 3CR.10101.150, 3CR.20101.150, 3CR.10651.150, 3CR.20651.150 & 3CR.10711.150 Barnhill Contracting

Brunswick County primary routes:

US 17 Business – mill & resurface from US 17 (south end of US 17 Bus.) to US 17 (@ nose of concrete island)...Bolivia area

US 17 Bypass (Southbound lanes) – patch, mill & resurface from 0.17 miles north of SR 1401 (Galloway Road) to 0.09 miles south of SR 1401

Brunswick County secondary routes:

SR 1104 (Beach Drive) – patching, milling, resurface & leveling from beginning of curb & gutter section to end of SR 1104

SR 1828 (Kings Lynn Drive) – patching, mill & resurface from SR 1104 (West Beach Drive) to SR 1828

SR 1401 (Galloway Road) – resurface from US 17 to SR 1402 (Randolphville Road)

SR 1435 (North Navassa Road) – patching, mill & resurface from SR 1472 (Village Road Northeast) to SR 1432 (Old Mill Road Northeast)

SR 1430 (Cedar Hill Road) – patching, mill & resurface from SR 1435 (North Navassa Road) to 0.58 miles south of SR 1431 (Royster Road Northeast)

SR 1430 (Cedar Hill Road) – patching, mill & resurface from 0.54 miles north of SR 1431 (Royster Road Northeast) to SR 1426 (Mount Misery Road)

Mill & resurface the following primary routes in New Hanover County:

US 421 (Carolina Beach Road) – from 0.26 miles south of Independence Blvd. (non-system portion) to west of Lake Shore Drive (non-system)

US 117 Northbound Lanes (Shipyard Blvd) – from US 421 to 0.05 miles east of US 421 (Carolina Beach Road)

US 117 Southbound Lanes (Shipyard Blvd) – from 0.20 miles east of US 421 to US 421 (Carolina Beach Road)

US 421 Southbound Lanes (South 3rd Street) – from US 76 (Dawson Street) to Greenfield Street (non-system)

US 421 Northbound Lanes (South 3rd Street) – from Greenfield Street (non-system) to US 76 (Dawson Street)

US 17 Business (South 3rd Street) – from US 76 eastbound lanes to US 76 westbound lanes

Mill & resurface the following secondary routes in New Hanover County:

SR 1218 (16th Street) – from US 76 westbound lanes (Wooster Street) to US 76 eastbound lanes (Dawson Street)

SR 1371 (16th St.) - from Grace Street (non-system) to US 17 Business (Market Street)

SR 2816 (16th St.) - from US 17 Business (Market Street) to US 76 westbound lanes (Wooster Street)

SR 1301 (17th Street) - from US 17 Business (Market Street) to Grace Street (non-system)

SR 2817 (17th Street) - from US 76 eastbound lanes (Dawson Street) to US 17 Business (Market Street)

SR 1411 (Wrightsville Avenue) - from Dawson Street Extension (non-system) to SR 1209 (Independence Blvd.)

Resurface the following secondary routes in New Hanover County:

SR 2699 (Amsterdam Way) - from SR 2700 (Old Dairy Rd.) to SR 2048 (Gordon Rd.)

SR 2701 (Antilles Ct.) - from SR 2698 (Netherlands Dr.) to end maintenance

SR 2698 (Netherlands Dr.) - from SR 2048 (Gordon Rd.) to SR 2700 (Old Dairy Rd.)

SR 2700 (Old Dairy Rd.) - from US 17 Bus. (Market St.) to SR 2699 (Amsterdam Way)

SR 2220 (Windmill Way) - from SR 2219 (N. Green Meadows Dr.) to SR 2700 (Old Dairy Rd)

SR 2183 (Spring Rd) - from NC 133 (Castle Hayne Rd.) to SR 2184 (Fairfield Rd.)

SR 2184 (Fairfield Rd.) - from SR 2183 (Spring Rd) to SR 1318 (Blue Clay Rd)

Widen & resurface following routes in New Hanover County:

SR 1940 (Covil Farm Rd) - from SR 1409 (Military Cut-Off Rd) to SR 1916 (Red Cedar Rd)

SR 2717 (Torchwood Blvd.) - from US 17 Bus. (Market St.) to SR 2718 (Beacon Dr.)

Mill & resurface a section & just resurface another section of SR 1363 (Bayshore Dr.) from US 17 Bus. (Market St.) to SR 1393 (Biscayne Dr.)

Pender County primary routes:

US 117 - mill & resurface from 0.30 miles north of NC 210 to 0.026 miles north of US 117 Business

NC 11/53 - mill & resurface from begin curb & gutter @ western city limits of Town of Atkinson to end curb & gutter @ the eastern city limits of Town of Atkinson.

NC 53 - Patch ONLY from I-40 to US 117 (Town of Burgaw).

Estimated Contract Completion Date May 2015

If you have any questions, please contact Patrick Riddle at the Division 3 Office:

priddle@ncdot.gov