



305 Chestnut Street  
PO Box 1810  
Wilmington, NC 28402  
Ph: (910) 341-3258  
Fax: (910) 341-7801  
www.wmpo.org

*Create and execute continuing, cooperative and comprehensive regional long-range planning efforts that pro-actively drive transportation decisions to improve safety, connectivity, economic development and quality of life in the Wilmington region.*

### **Technical Coordinating Committee Meeting Agenda**

**TO:** Technical Coordinating Committee Members  
**FROM:** Mike Kozlosky, Executive Director  
**DATE:** February 2, 2017  
**SUBJECT:** February 8<sup>th</sup> meeting

A meeting of the Wilmington Urban Area MPO's Technical Coordinating Committee will be held on Wednesday, February 8<sup>th</sup> at 10 am. The meeting will be held in the Lord Spencer Compton Conference Room at 102 North 3rd Street in downtown Wilmington.

The following is the agenda for the meeting:

- 1) Call to Order
- 2) Approval of the Agenda
- 3) Presentation
  - a. Initiating the WMPO's 2045 MTP Development, Suraiya Motsinger, WMPO
- 4) Consent Agenda
  - a. Opening of the 30-day public comment for the Wilmington Urban Area MPO's Draft FY 18 Unified Planning Work Program
  - b. Resolution approving the STIP/MTIP Modifications (January)
  - c. Resolution adopting the 2017-2021 Strategic Business Plan Targets, Objectives and Strategies
- 5) Regular Agenda
  - a. Resolution supporting the Re-alignment of North Carolina Bicycling Highways 3 and 5 and requesting for NCDOT to Re-analyze Bicycling Highways Statewide
- 6) Discussion
  - a. Potential Options for Expenditure of the Remaining FY 17 Direct Attributable Allocations
  - b. STBGP-DA and TASA Process Improvements
  - c. Unobligated PL Balances
  - d. STIP/MTIP Modifications (February)
  - e. Prioritization 5.0 Project Development/Evaluations
- 7) Updates
  - a. Crossing over the Cape Fear River
  - b. Wilmington Urban Area MPO
  - c. Cape Fear Public Transportation Authority
  - d. NCDOT Division

### **Wilmington Urban Area Metropolitan Planning Organization**

City of Wilmington • Town of Carolina Beach • Town of Kure Beach • Town of Wrightsville Beach  
County of New Hanover • Town of Belville • Town of Leland • Town of Navassa • County of Brunswick  
County of Pender • Cape Fear Public Transportation Authority • North Carolina Department of Transportation

- 
- e. NCDOT Transportation Planning Branch
- 8) Announcements
- a. WMPO Bike/Ped Committee Meeting April 11<sup>th</sup>
- 9) Next meeting –March 15, 2017

**Attachments:**

- Draft FY 18 Unified Planning Work Program
- STIP/MTIP Modifications (January)
- Resolution approving the STIP/MTIP Modifications (January)
- Memo outlining the Wilmington Urban Area MPO's 2017-2021 Strategic Business Plan Targets, Objectives and Strategies
- Resolution adopting the 2017-2021 Strategic Business Plan Targets, Objectives and Strategies
- Map of Proposal to Re-align North Carolina Bicycling Highways 3 and 5
- Resolution supporting the Re-alignment of North Carolina Bicycling Highways 3 and 5 and requesting for NCDOT to Re-analyze Bicycling Highways Statewide
- Memo for Potential Options for Expenditure of the Remaining FY 17 Direct Attributable Allocations
- STIP/MTIP Modifications (February)
- Memo for Prioritization 5.0 Projects to Investigate through the Pre-submittal Process
- Cape Fear River Crossing Update (February)
- Wilmington MPO Project Update (February)
- Cape Fear Public Transportation Authority Update (February)
- NCDOT Project Update (February)





***Unified Planning Work Program***

**Fiscal Year 2018**

**DRAFT**

**FY 2017-2018 UNIFIED PLANNING WORK PROGRAM  
for the  
WILMINGTON, NORTH CAROLINA URBAN AREA**

**TABLE OF CONTENTS**

| <b><u>Subject</u></b>   | <b><u>Page</u></b> |
|---|--------------------|
| Table of Contents .....   | 2                  |
| Introduction .....  | 3                  |
| Narrative of Section 104(f) Work Tasks to be Performed in FY 2017-2018 .....    | 4                  |
| Tables of UPWP FTA Section 5303 Work Tasks to be Performed in FY 2017-2018..... | 8                  |
| Planning Work Program Funding Sources FY 2017-2018.....                         | 17                 |
| Anticipated DBE Contracting Opportunities for FY 2017-2018 .....                | 18                 |
| Resolution of Approval .....  | 19                 |
| MPO Certification.....  | 20                 |

## **Introduction**

In compliance with Federal law and in the spirit of cooperation, the Wilmington Urban Area conducts a “cooperative, comprehensive, and continuing....” transportation planning process. This Planning Work Program (PWP) outlines the tasks and associated funding sources dedicated to the Wilmington Urban Area MPO transportation planning process during fiscal year 2017-2018. Depending on the specific funding source, tasks funded through the PWP are eligible for reimbursement of 80-90% of their cost from the Federal Highway Administration and Federal Transit Administration through the North Carolina Department of Transportation.

The PWP for the Wilmington Urban Area identifies four separate funding sources for Urban Area transportation planning. A brief description of these funding sources follows:

- Statewide Planning and Research Programs (SPR)-These funds are used by NCDOT to conduct work for the Wilmington Urban Area MPO.
- Federal Highway Administration Section 104(f) Funds-These funds are dedicated to the urban area to perform transportation planning. They require a 20% local match.
- Federal Transit Administration Section 5303 Funds-These funds are used for transit planning in the urban area. The Federal Transit Administration provides 80% of these funds, NCDOT 10%, and there is a required 10% local match.
- Surface Transportation Program-Direct Attributable Funds- These funds are dedicated to Transportation Management Areas and these funds can be used to perform transportation planning. They require a 20% local match.

The local match requirements will be shared by all members of the Wilmington Urban Area MPO in direct proportion to population as defined in the Wilmington Urban Area MPO Memorandum of Understanding.

**Narrative of PWP Section 104(f) Work Tasks to be Performed in FY 2017-2018**

(Primary work to be performed by lead planning agency staff except where noted.)

Line Item Code

II-A1 Traffic Volume Counts- Wilmington MPO staff maintains an ongoing traffic counting program. An annual summary of the urban area traffic counts and accident data will be prepared and uploaded to the WMPO website.

II-A2 Vehicle Miles of Travel- Establish VMT as measure of effectiveness of transportation system. Measure the VMT with the new travel demand model.

II-A3 Street System Changes- No tasks forseen.

II-A4 Traffic Accidents-Currently MPO staff conducts an ongoing effort to summarize traffic accident data for specific projects. MPO staff also utilizes accident data for specific inquiries.

II-A5 Transit System Data- Update of transit system database as needed.

II-A6 Dwelling Unit, Population, Employment Changes- Will measure land use changes by Transportation Analysis Zone between 2010 Census and travel demand model base year. Staff will provide capacity analysis for proposed developments within the Wilmington planning area boundary.

II-A7 Air Travel- Assistance to Wilmington International Airport as needed.

II-A8 Vehicle Occupancy Rate Counts- Monitor VOC as needed.

II-A9 Travel Time Studies- No tasks forseen.

II-A10 Mapping- Keep Geographic Information System files current and produce maps to support the TCC and TAC, transportation plans, programs, and projects.

II-A11 Central Area Parking Inventory- No tasks foreseen.

II-A12 Bicycle and Pedestrian Facilities Inventory- Update bicycle suitability assessment of federal-aid functionally classed roadways.

II-B1 Collection of Base Year Data- No tasks foreseen.

II-B2 Collection of Network Data- No tasks foreseen.

II-B3 Travel Model Updates- In concert with the North Carolina Department of Transportation, MPO staff will assist in the development of the 2045 travel demand model.

II-B4 Travel Surveys- No tasks foreseen.

II-B5 Forecast of Data to Horizon Year-No tasks foreseen.

II-B6 Community Goals and Objectives- Monitor public input as it pertains to goals and objectives set forth in the adopted Metropolitan Transportation Plan. Implementation of the Performance Measures from MAP-21 and the FAST ACT.

II-B7 Forecast of Future Year Travel Patterns- No tasks foreseen.

II-B8 Capacity Deficiency Analysis- Identify areas of deficient capacity through use of travel demand model for further analysis as potential long range transportation improvement projects.

II-B9 Highway Element of Metropolitan Transportation Plan (MTP)- Identification of highway deficiencies, priorities, and proposed highway improvement solutions and strategies. Provide documentation of process and recommendations in the MTP. Implementation of the Performance Measures from MAP-21 and the FAST ACT.

II-B10 Transit Element of Metropolitan Transportation Plan- Identify public transportation deficiencies, priorities, and proposed transit improvement solutions for inclusion in the update of the MTP. Provide documentation of process and recommendations in the update of the MTP. Implementation of the Performance Measures from MAP-21 and the FAST ACT.

II-B11 Bicycle and Pedestrian Element of the Metropolitan Transportation Plan- Identify bicycle deficiencies, priorities, and proposed bicycle and pedestrian improvement solutions and strategies. Provide documentation of the process and recommendations in the update of the MTP. Implementation of the Performance Measures from MAP-21 and the FAST ACT.

II-B12 Airport/Air Travel Element of the Metropolitan Transportation Plan - Identify airport and air service deficiencies, priorities, and proposed airport and air service improvement solutions and strategies. Provide documentation of process and recommendations in the update of the MTP. Implementation of the Performance Measures from MAP-21 and the FAST ACT.

II-B13 Collector Street Element of Metropolitan Transportation Plan- Develop regionally acceptable collector street policies and program recommendations for inclusion in the update of the MTP. Implementation of the Performance Measures from MAP-21 and the FAST ACT.

II-B14 Rail, Waterway and Other Elements of Metropolitan Transportation Plan - Identify rail and waterway deficiencies, priorities, and proposed rail and waterway improvement solutions and strategies. Provide documentation of process and recommendations in the update of the MTP. Implementation of the Performance Measures from MAP-21 and the FAST ACT.

II-B15 Freight Movement/Mobility Planning- Identification of freight movement deficiencies, priorities, and proposed improvement solutions and strategies. Provide documentation of

process and recommendations in the update of the MTP. Implementation of the Performance Measures from MAP-21 and the FAST ACT.

II-B16 Financial Planning- Develop realistic, best estimates of funding sources available and project cost estimates throughout the forecast years for the MTP. Ensure fiscal constraint in the update of the MTP. Implementation of the Performance Measures from MAP-21 and the FAST ACT.

II-B17 Congestion Management Strategies- Develop strategies to address and manage congestion by increasing transportation system supply, reducing demand by application of alternative mode solutions, and transportation system management strategies. Evaluate strategies developed for the Congestion Management Process. Document process and solutions in the update of the MTP and CMP report. Implementation of the Performance Measures from MAP-21 and the FAST ACT.

II-B-18 Air Quality Planning/ Conformity Analysis- No tasks foreseen.

III-A Planning Work Program- Evaluation of FY 2018 PWP and development of FY 2019 PWP.

III-B Transportation Improvement Program- Adopt the 2018-2027 Transportation Improvement Program. Review and amend the 2018-2027 Transportation Improvement Program on an as needed basis.

III-C1 Title VI Compliance- Work to insure compliance with the requirements of Title VI in urban area policies and practices.

III-C2 Environmental Justice- Analysis and outreach to insure that transportation plans and projects comply with Environmental Justice policies.

III-C3 MBE Planning- Activities to encourage participation of minority-owned business enterprises in contractual and supply opportunities.

III-C4 Planning for the Elderly and Disabled- Ensure the special needs of the elderly and disabled are addressed in all transportation planning projects.

II-C5 Safety/Drug Control Planning- No tasks foreseen.

III-C6 Public Involvement- Extensive Public Participation effort will be carried out to solicit input and reaction to the completion of planning studies within the Wilmington Urban Area MPO's planning area boundary.

III-C7 Private Sector Participation- Activities to encourage private sector participation in planning and project activities.

III-D1 Transportation Enhancement Planning- Prepare and submit applications for potential transportation enhancement funding in the Wilmington Urban Area.

II-D2 Environmental and Pre-TIP Planning- Conduct environmental analysis and planning for the development of transportation projects in the Wilmington Urban Area.

III-D3 Special Studies- Consultant will be contracted to assist in the completion of the Metropolitan Transportation Plan and other studies completed by the MPO. These special studies include Leland Street Design Manual, Northern New Hanover Collector Street Plan, Wrightsville Beach Drawbridge Feasibility Study, and the Pender County Bike/Pedestrian Plan. The Cape Fear Public Transportation Authority will also work toward the completion of the Authority's Short-range Transit Plan.

III-D4 Statewide and Regional Planning- Coordination of urban area activities with statewide and regional initiatives.

III-E Management and Operations- Required ongoing administrative and operational tasks to support MPO committees and reporting requirements.

|                                      |  |
|--------------------------------------|--|
| MPO                                  | Wilmington   |
| FTA Code                             | 442100 - Program Support Administration  |
| Task Code                            | II-A-5   |
| Title                                | Transit System Data  |
| Task Objective                       | Collect and analyze data for route planning and submission to NTD  |
| Tangible Product Expected            | Accurate data from multiple data collection devices onboard Wave Transit vehicles and other sources to ensure compliance with National Transit Database requirements |
| Expected Completion Date of Products | June 2018  |
| Previous Work                        | Collection of data and submission to NTD   |
| Relationship                         | This is a collaborative effort of the Wilmington MPO and the Cape Fear Public Transportation Authority (Wave Transit)  |
| Responsible Agency                   | CFPTA  |
| SPR - Highway - NCDOT 20%            |  |
| SPR - Highway - F11WA 80%            |  |
| Section 104 (f) PL, Local 20%        |  |
| Section 104 (f) PL, FHWA 80%         |  |
| Section 5303 Local 10%               | 1,200  |
| Section 5303 NCDOT 10%               | 1,200  |
| Section 5303 FTA 80%                 | 9,600  |
| Section 5307 Transit - Local 10%     |  |
| Section 5307 Transit - NCDOT 10%     |  |
| Section 5307 Transit - FTA 80%       |  |
| Additional Funds - Local 100%        |  |



|                                      |   |
|--------------------------------------|---|
| MPO                                  | Wilmington  |
| FTA Code                             | 442100 - Program Support Administration   |
| Task Code                            | II-B-6  |
| Title                                | Community Goals & Objectives  |
| Task Objective                       | Interpret and communicate with members of the Authority and WMPO TCC and TAC adopted planning documents defining community goals and objectives |
| Tangible Product Expected            | Service offerings that are compliant with adopted plans that outlined the goals of the community for public transportation in the region        |
| Expected Completion Date of Products | June 2018   |
| Previous Work                        | Communication of goals and objectives to decision makers and the public   |
| Relationship                         | This is a collaborative effort of the Wilmington MPO and the Cape Fear Public Transportation Authority (Wave Transit)                           |
| Responsible Agency                   | CFPTA   |
| SPR - Highway - NCDOT 20%            |   |
| SPR - Highway - F11WA 80%            |   |
| Section 104 (f) PL, Local 20%        |   |
| Section 104 (f) PL, FHWA 80%         |   |
| Section 5303 Local 10%               | 400   |
| Section 5303 NCDOT 10%               | 400   |
| Section 5303 FTA 80%                 | 3,200   |
| Section 5307 Transit - Local 10%     |   |
| Section 5307 Transit - NCDOT 10%     |   |
| Section 5307 Transit - FTA 80%       |   |
| Additional Funds - Local 100%        |   |

|                                      |   |
|--------------------------------------|---|
| MPO                                  | Wilmington  |
| FTA Code                             | 442100 - Program Support Administration   |
| Task Code                            | II-B-10   |
| Title                                | Transit Element of the LRTP   |
| Task Objective                       | Provide input to CAC, TCC and TAC regarding long range transit plans for the region   |
| Tangible Product Expected            | Informed decisions regarding long range public transportation plans leading to a realistic planning document for the region |
| Expected Completion Date of Products | June 2018   |
| Previous Work                        | Provided input and educated decision makers regarding the federal and state public transportation program                   |
| Relationship                         | This is a collaborative effort of the Wilmington MPO and the Cape Fear Public Transportation Authority (Wave Transit)       |
| Responsible Agency                   | CFPTA   |
| SPR - Highway - NCDOT 20%            |   |
| SPR - Highway - F11WA 80%            |   |
| Section 104 (f) PL, Local 20%        |   |
| Section 104 (f) PL, FHWA 80%         |   |
| Section 5303 Local 10%               | 400   |
| Section 5303 NCDOT 10%               | 400   |
| Section 5303 FTA 80%                 | 3,200   |
| Section 5307 Transit - Local 10%     |   |
| Section 5307 Transit - NCDOT 10%     |   |
| Section 5307 Transit - FTA 80%       |   |
| Additional Funds - Local 100%        |   |

|                                      |  |
|--------------------------------------|--|
| MPO                                  | Wilmington   |
| FTA Code                             | 442100 - Program Support Administration  |
| Task Code                            | II-B-16  |
| Title                                | Financial Planning   |
| Task Objective                       | Plan capital and operating cost estimates to ensure fiscal compliance and maintain the adopted level of transit service  |
| Tangible Product Expected            | Short range financial plans based on current federal and state legislation to ensure that transit services are provided in a consistent manner utilizing the most economical and efficient methods |
| Expected Completion Date of Products | June 2018  |
| Previous Work                        | Financial planning of the public transportation program  |
| Relationship                         | This is a collaborative effort of the Wilmington MPO and the Cape Fear Public Transportation Authority (Wave Transit)  |
| Responsible Agency                   | CFPTA  |
| SPR - Highway - NCDOT 20%            |  |
| SPR - Highway - F11WA 80%            |  |
| Section 104 (f) PL, Local 20%        |  |
| Section 104 (f) PL, FHWA 80%         |  |
| Section 5303 Local 10%               | 800  |
| Section 5303 NCDOT 10%               | 800  |
| Section 5303 FTA 80%                 | 6,400  |
| Section 5307 Transit - Local 10%     |  |
| Section 5307 Transit - NCDOT 10%     |  |
| Section 5307 Transit - FTA 80%       |  |
| Additional Funds - Local 100%        |  |

|                                      |   |
|--------------------------------------|---|
| MPO                                  | Wilmington  |
| FTA Code                             | 442100 - Program Support Administration   |
| Task Code                            | II-C-1  |
| Title                                | Title VI  |
| Task Objective                       | Interpret and prepare Title VI documents and monitor Title VI efforts to ensure compliance with FTA approved Title VI program |
| Tangible Product Expected            | Compliance with the Title VI circular and adopted Title VI program  |
| Expected Completion Date of Products | June 2018   |
| Previous Work                        | Title VI program development and compliance efforts   |
| Relationship                         | This is a collaborative effort of the Wilmington MPO and the Cape Fear Public Transportation Authority (Wave Transit)         |
| Responsible Agency                   | CFPTA   |
| SPR - Highway - NCDOT 20%            |   |
| SPR - Highway - F11WA 80%            |   |
| Section 104 (f) PL, Local 20%        |   |
| Section 104 (f) PL, FHWA 80%         |   |
| Section 5303 Local 10%               | 800   |
| Section 5303 NCDOT 10%               | 800   |
| Section 5303 FTA 80%                 | 6,400   |
| Section 5307 Transit - Local 10%     |   |
| Section 5307 Transit - NCDOT 10%     |   |
| Section 5307 Transit - FTA 80%       |   |
| Additional Funds - Local 100%        |   |

|                                      |  |
|--------------------------------------|--|
| MPO                                  | Wilmington   |
| FTA Code                             | 442100 - Program Support Administration  |
| Task Code                            | II-C-3   |
| Title                                | Minority Business Enterprise   |
| Task Objective                       | Implement and monitor the MBE program to be compliant with adopted MBE program, update MBE goals as required, and undertake MBE outreach |
| Tangible Product Expected            | MBE participation that is equal to or greater than the adopted and approved MBE goal   |
| Expected Completion Date of Products | June 2018  |
| Previous Work                        | MBE program oversight  |
| Relationship                         | This is a collaborative effort of the Wilmington MPO and the Cape Fear Public Transportation Authority (Wave Transit)                    |
| Responsible Agency                   | CFPTA  |
| SPR - Highway - NCDOT 20%            |  |
| SPR - Highway - F11WA 80%            |  |
| Section 104 (f) PL, Local 20%        |  |
| Section 104 (f) PL, FHWA 80%         |  |
| Section 5303 Local 10%               | 800  |
| Section 5303 NCDOT 10%               | 800  |
| Section 5303 FTA 80%                 | 6,400  |
| Section 5307 Transit - Local 10%     |  |
| Section 5307 Transit - NCDOT 10%     |  |
| Section 5307 Transit - FTA 80%       |  |
| Additional Funds - Local 100%        |  |

|                                      |  |
|--------------------------------------|--|
| MPO                                  | Wilmington   |
| FTA Code                             | 442100 - Program Support Administration  |
| Task Code                            | II-C-6   |
| Title                                | Public Involvement   |
| Task Objective                       | Hear and analyze public comment from monthly meetings of the Authority, email comments, written comments and other comments outlined in the Authority Public Involvement Program. Work with public to update LCP, LRTP, SRTP and other planning documents. |
| Tangible Product Expected            | Make recommendations to appropriate parties from comments made to the Authority by members of the community  |
| Expected Completion Date of Products | June 2018  |
| Previous Work                        | Public comment   |
| Relationship                         | This is a collaborative effort of the Wilmington MPO and the Cape Fear Public Transportation Authority (Wave Transit)  |
| Responsible Agency                   | CFPTA  |
| SPR - Highway - NCDOT 20%            |  |
| SPR - Highway - F11WA 80%            |  |
| Section 104 (f) PL, Local 20%        |  |
| Section 104 (f) PL, FHWA 80%         |  |
| Section 5303 Local 10%               | 800  |
| Section 5303 NCDOT 10%               | 800  |
| Section 5303 FTA 80%                 | 6,400  |
| Section 5307 Transit - Local 10%     |  |
| Section 5307 Transit - NCDOT 10%     |  |
| Section 5307 Transit - FTA 80%       |  |
| Additional Funds - Local 100%        |  |

|                                      |   |
|--------------------------------------|---|
| MPO                                  | Wilmington  |
| FTA Code                             | 442100 - Program Support Administration   |
| Task Code                            | III-D-3   |
| Title                                | Special Studies   |
| Task Objective                       | The CFPTA, with assistance from the MPO, will engage consulting services for the development of the Authority's Five Year Short Range Transit Plan (FY18-FY22). |
| Tangible Product Expected            | Compliance with FTA and NCDOT requirements and a Short Range Planning Report that meets the mass transportation needs of the community for the next five years. |
| Expected Completion Date of Products | December 2017   |
| Previous Work                        | The Authority's Five Year Short Range Transit Plan Final Report dated June 2012.  |
| Relationship                         | This is a collaborative effort of the Wilmington MPO and the Cape Fear Public Transportation Authority (Wave Transit)   |
| Responsible Agency                   | CFPTA   |
| SPR - Highway - NCDOT 20%            |   |
| SPR - Highway - F11WA 80%            |   |
| Section 104 (f) PL, Local 20%        |   |
| Section 104 (f) PL, FHWA 80%         |   |
| Section 5303 Local 10%               |   |
| Section 5303 NCDOT 10%               |   |
| Section 5303 FTA 80%                 |   |
| Section 5307 Transit - Local 10%     | 7,500   |
| Section 5307 Transit - NCDOT 10%     | 7,500   |
| Section 5307 Transit - FTA 80%       | 60,000  |
| Additional Funds - Local 100%        |   |

|                                      |   |
|--------------------------------------|---|
| MPO                                  | Wilmington  |
| FTA Code                             | 442100 - Program Support Administration   |
| Task Code                            | III-E   |
| Title                                | Management & Operations   |
| Task Objective                       | MPO and CFPTA staff will conduct required administrative and operational tasks to support Wave Transit. Periodical reviews of administrative agreements and procedures. Staff will perform daily operations to disseminate planning information to the TAC/TCC committee members, the public and/or other agencies. |
| Tangible Product Expected            | Compliance with FTA and NCDOT requirements, well informed community and elected officials about the public transit program, and functional system that meets the needs of the community   |
| Expected Completion Date of Products | June 2018   |
| Previous Work                        | Collection of data and submission to NTD  |
| Relationship                         | This is a collaborative effort of the Wilmington MPO and the Cape Fear Public Transportation Authority (Wave Transit)   |
| Responsible Agency                   | CFPTA   |
| SPR - Highway - NCDOT 20%            |   |
| SPR - Highway - F11WA 80%            |   |
| Section 104 (f) PL, Local 20%        |   |
| Section 104 (f) PL, FHWA 80%         |   |
| Section 5303 Local 10%               | 2,800   |
| Section 5303 NCDOT 10%               | 2,800   |
| Section 5303 FTA 80%                 | 22,400  |
| Section 5307 Transit - Local 10%     |   |
| Section 5307 Transit - NCDOT 10%     |   |
| Section 5307 Transit - FTA 80%       |   |
| Additional Funds - Local 100%        |   |





## Wilmington Urban Area Metropolitan Planning Organization

FY2018 Unified Planning Work Program

Draft

| TASK CODE | TASK DESCRIPTION                    | SEC. 104 (f) PL                   |                                     |         | SECTION 5303 |              |            |              | STBGP-DA    |          |              | TDM          |              | SECTION 5307 |              |            |          | TASK FUNDING SUMMARY |             |         |        |
|-----------|-------------------------------------|-----------------------------------|-------------------------------------|---------|--------------|--------------|------------|--------------|-------------|----------|--------------|--------------|--------------|--------------|--------------|------------|----------|----------------------|-------------|---------|--------|
|           |                                     | Highway / Transit<br>LOCAL<br>20% | FWHA<br>80%                         | Transit | LOCAL<br>10% | NCDOT<br>10% | FTA<br>80% | LOCAL<br>20% | FWHA<br>80% | Transit  | LOCAL<br>50% | NCDOT<br>50% | LOCAL<br>10% | Transit      | NCDOT<br>10% | FTA<br>80% | LOCAL    | NCDOT                | FEDERAL     | TOTAL   |        |
| II-A      | SURVEILLANCE OF CHANGE              |                                   |                                     |         |              |              |            |              |             |          |              |              |              |              |              |            |          |                      |             |         |        |
|           |                                     | II-A-1                            | Traffic Volume Counts               | 10,600  | 42,400       |              |            |              |             |          |              |              |              |              |              |            |          | 10,600               |             | 42,400  | 53,000 |
|           |                                     | II-A-2                            | Vehicle Miles of Travel             | 50      | 200          |              |            |              |             |          |              |              |              |              |              |            |          | 50                   |             | 200     | 250    |
|           |                                     | II-A-4                            | Traffic Accidents                   | 600     | 2,400        |              |            |              |             |          |              |              |              |              |              |            |          | 600                  |             | 2,400   | 3,000  |
|           |                                     | II-A-5                            | Transit System Data                 | 100     | 400          |              |            |              |             |          |              |              |              |              |              |            |          | 2,300                | 1,200       | 14,000  | 17,500 |
|           |                                     | II-A-6                            | Dwelling Unit, Pop. & Emp. Change   | 400     | 1,600        |              |            |              |             |          |              |              |              |              |              |            |          | 400                  |             | 1,600   | 2,000  |
|           |                                     | II-A-7                            | Air Travel                          | 50      | 200          |              |            |              |             |          |              |              |              |              |              |            |          | 50                   |             | 200     | 250    |
|           |                                     | II-A-8                            | Vehicle Occupancy Rates             | 50      | 200          |              |            |              |             |          |              |              |              |              |              |            |          | 50                   |             | 200     | 250    |
|           |                                     | II-A-10                           | Mapping                             | 2,000   | 8,000        |              |            |              |             |          |              |              |              |              |              |            |          | 11,967               |             | 47,869  | 59,836 |
|           |                                     | II-A-12                           | Bike & Ped. Facilities Inventory    | 600     | 2,400        |              |            |              |             |          |              |              |              |              |              |            |          | 600                  |             | 2,400   | 3,000  |
|           |                                     |                                   |                                     |         |              |              |            |              |             |          |              |              |              |              |              |            |          |                      |             |         |        |
|           |                                     | II-B                              | LONG RANGE TRANSPORTATION PLANNING  |         |              |              |            |              |             |          |              |              |              |              |              |            |          |                      |             |         |        |
| II-B-3    | Travel Model Updates                |                                   |                                     | 2,000   | 8,000        |              |            |              |             |          |              |              |              |              |              |            |          | 2,000                |             | 8,000   | 10,000 |
| II-B-6    | Community Goals & Objectives        |                                   |                                     | 4,000   | 16,000       |              |            |              |             |          |              |              |              |              |              |            |          | 5,400                | 400         | 23,200  | 29,000 |
| II-B-8    | Capacity Deficiency Analysis        |                                   |                                     | 400     | 1,600        |              |            |              |             |          |              |              |              |              |              |            |          | 1,400                |             | 5,600   | 7,000  |
| II-B-9    | Highway Element of th L RTP         |                                   |                                     | 4,800   | 19,200       |              |            |              |             |          |              |              |              |              |              |            |          | 4,800                |             | 19,200  | 24,000 |
| II-B-10   | Transit Element of the L RTP        |                                   |                                     | 400     | 1,600        |              |            |              |             |          |              |              |              |              |              |            |          | 800                  | 400         | 4,800   | 6,000  |
| II-B-11   | Bicycle & Ped. Element of the L RTP |                                   |                                     | 4,000   | 16,000       |              |            |              |             |          |              |              |              |              |              |            |          | 4,000                |             | 16,000  | 20,000 |
| II-B-12   | Airport/Air Travel Element of L RTP |                                   |                                     | 1,000   | 4,000        |              |            |              |             |          |              |              |              |              |              |            |          | 1,000                |             | 4,000   | 5,000  |
| II-B-13   | Collector Street Element of L RTP   |                                   |                                     | 600     | 2,400        |              |            |              |             |          |              |              |              |              |              |            |          | 600                  |             | 2,400   | 3,000  |
| II-B-14   | Rail, Water or other mode of L RTP  |                                   |                                     | 1,000   | 4,000        |              |            |              |             |          |              |              |              |              |              |            |          | 1,000                |             | 4,000   | 5,000  |
| II-B-15   | Freight Movement/Mobility Planning  |                                   |                                     | 600     | 2,400        |              |            |              |             |          |              |              |              |              |              |            |          | 600                  |             | 2,400   | 3,000  |
| II-B-16   | Financial Planning                  |                                   |                                     | 400     | 1,600        |              |            |              |             |          |              |              |              |              |              |            |          | 1,200                | 800         | 8,000   | 10,000 |
| II-B-17   | Congestion Management Strategies    | 1,000                             | 4,000                               |         |              |              |            |              |             |          |              |              |              |              |              | 2,000      |          | 8,000                | 10,000      |         |        |
|           |                                     |                                   |                                     |         |              |              |            |              |             |          |              |              |              |              |              |            |          |                      |             |         |        |
| III-A     | PLANNING WORK PROGRAM               | 224                               | 896                                 |         |              |              |            |              |             |          |              |              |              |              |              |            | 224      |                      | 896         | 1,120   |        |
| III-B     | TRANSPORTATION IMPROVEMENT PROGRAM  | 200                               | 800                                 |         |              |              |            |              |             |          |              |              |              |              |              |            | 200      |                      | 800         | 1,000   |        |
|           |                                     |                                   |                                     |         |              |              |            |              |             |          |              |              |              |              |              |            |          |                      |             |         |        |
| III-C     | CVL RGTS. CMP./OTR. REG. REQS.      |                                   |                                     |         |              |              |            |              |             |          |              |              |              |              |              |            |          |                      |             |         |        |
|           |                                     | III-C-1                           | Title VI                            | 250     | 1,000        | 800          |            |              |             |          |              |              |              |              |              |            | 1,050    | 800                  | 7,400       | 9,250   |        |
|           |                                     | III-C-2                           | Environmental Justice               | 600     | 2,400        |              |            |              |             |          |              |              |              |              |              |            |          | 600                  |             | 2,400   | 3,000  |
|           |                                     | III-C-3                           | Minority Business Enterprise        | 200     | 800          | 800          |            |              |             |          |              |              |              |              |              |            |          | 1,000                | 800         | 7,200   | 9,000  |
|           |                                     | III-C-4                           | Planning for the Elderly & Disabled | 50      | 200          |              |            |              |             |          |              |              |              |              |              |            |          | 50                   |             | 200     | 250    |
|           |                                     | III-C-6                           | Public Involvement                  | 1,000   | 4,000        | 800          |            |              |             |          |              |              |              |              |              |            |          | 1,800                | 800         | 10,400  | 13,000 |
|           |                                     | III-C-7                           | Private Sector Participation        | 400     | 1,600        |              |            |              |             |          |              |              |              |              |              |            |          | 400                  |             | 1,600   | 2,000  |
| III-D     | INCIDENTAL PLNG./PROJECT DEV.       |                                   |                                     |         |              |              |            |              |             |          |              |              |              |              |              |            |          |                      |             |         |        |
| III-D-1   | Transportation Enhancement Plng.    | 50                                | 200                                 |         |              |              |            |              |             |          |              |              |              |              |              | 50         |          | 200                  | 250         |         |        |
| III-D-2   | Enviro. Analysis & Pre-TIP Plng.    | 50                                | 200                                 |         |              |              |            |              |             |          |              |              |              |              |              | 50         |          | 200                  | 250         |         |        |
| III-D-3   | Special Studies                     | 2,000                             | 8,000                               |         |              |              |            |              |             |          |              |              |              |              |              | 7,500      | 7,500    | 112,000              | 140,000     |         |        |
| III-D-4   | Regional or Statewide Planning      | 100                               | 400                                 |         |              |              |            |              |             |          |              |              |              |              |              | 100        |          | 400                  | 500         |         |        |
| III-E     | MANAGEMENT & OPERATIONS             | 28,000                            | 112,000                             | 2,800   | 2,800        | 2,800        | 22,400     | 60,000       | 240,000     | 60,000   | 60,000       |              |              |              |              |            | 150,800  | 62,800               | 374,400     | 588,000 |        |
| TOTALS    |                                     | \$67,774                          | \$271,096                           | \$8,000 | \$8,000      | \$8,000      | \$64,000   | \$84,967     | \$339,869   | \$60,000 | \$60,000     | \$7,500      | \$7,500      | \$7,500      | \$60,000     | \$228,241  | \$75,500 | \$734,965            | \$1,038,706 |         |        |

## Anticipated DBE Contracting Opportunities for FY 2017-2018

Name of MPO: Wilmington Urban Area MPO

Person Completing Form: Mike Kozlosky Telephone Number: 910-342-2781

| <b>Prospectus Task Code</b> | <b>Prospectus Description</b> | <b>Name of Agency Contracting Out</b> | <b>Type of Contracting Opportunity (Consultant, etc.)</b> | <b>Federal Funds to be Contracted Out</b> | <b>Total Funds to be Contracted Out</b> |
|-----------------------------|-------------------------------|---------------------------------------|---|---|---|
| III-D-3                     | Special Studies               | City of Wilmington                    | Consultant  | \$36,000                                  | \$45,000                                |
| III-D-3                     | Special Studies               | Cape Fear Public Transit Authority    | Consultant  | \$60,000                                  | \$75,000                                |

**RESOLUTION**  
APPROVING THE FY 2017-2018 PLANNING WORK PROGRAM  
OF THE WILMINGTON URBAN AREA

**WHEREAS**, a comprehensive and continuing transportation planning program must be carried out cooperatively in order to ensure that funds for transportation projects are effectively allocated to the Wilmington Urban Area;

**WHEREAS**, the City of Wilmington has been designated as the recipient of Federal Transit Administration Metropolitan Planning Program (Section 5303) funds and Federal Highway Administration Metropolitan Planning (Section 104(f)) funds;

**WHEREAS**, members of the Wilmington Urban Area Metropolitan Planning Organization Board agree that the Planning Work Program will effectively advance transportation planning for State Fiscal Year 2017-2018;

**NOW THEREFORE**, be it resolved that the Board of the Wilmington Urban Area Metropolitan Planning Organization hereby endorses the FY 2017-2018 Planning Work Program for the Wilmington Urban Area.

\*\*\*\*\*

I, Gary Doetsch, Chair of the Board of the Wilmington Urban Area Metropolitan Planning Organization do hereby certify that the above is a true and correct copy of an excerpt from the minutes of a meeting of the Board, duly held on this the 29<sup>th</sup> day of March, 2017.

\_\_\_\_\_  
Gary Doetsch, Chair

\*\*\*\*\*

Subscribed and sworn to me this the \_\_\_\_ day of \_\_\_\_\_, 2017.

\_\_\_\_\_  
Notary Public

My commission expires\_\_\_\_\_.

## **RESOLUTION CONFIRMING TRANSPORTATION PLANNING PROCESS**

### **RESOLUTION CERTIFYING THE WILMINGTON METROPOLITAN PLANNING ORGANIZATION'S TRANSPORTATION PLANNING PROCESS FOR FY 2017**

**WHEREAS**, the Wilmington Urban Area Metropolitan Planning Organization provides transportation planning services for the City of Wilmington, Town of Carolina Beach, Town of Kure Beach, Town of Wrightsville Beach, Town of Belville, Town of Leland, Town of Navassa, New Hanover County, Brunswick County, Pender County, Cape Fear Public Transportation Authority and the North Carolina Board of Transportation; and

**WHEREAS**, the Board has found that the Metropolitan Planning Organization is conducting transportation planning in a continuous, cooperative, and comprehensive manner in accordance with 23 U.S.C. 134 and 49 U.S.C. 1607; and

**WHEREAS**, the Board has found the Transportation Planning Process to be in full compliance with Title VI of the Civil Rights Act of 1964 and the Title VI Assurance executed by each State under 23 U.S.C. 324 and 29 U.S.C. 794; and

**WHEREAS**, the Board has considered how the Transportation Planning Process will affect the involvement of Disadvantaged Business Enterprises in the FHWA and the FTA funded planning projects (Section 1003(b) of ISTEA of 1991 (Pub. L. 102-240), Sec. 105(f), Pub. L. 97-424, 96 Stat. 2100, 49 CFR part 23); and

**WHEREAS**, the Board has considered how the Transportation Planning Process will affect the elderly and the disabled per the provision of the Americans With Disabilities Act of 1990 (Pub. L. 101-336, 104 Stat. 327, as amended) and the U.S. DOT implementing regulations (49 CFR parts 27, 37, and 38); and

**WHEREAS**, the Transportation Plan has a planning horizon year of 2040, and meets all the requirements for an adequate Transportation Plan.

**NOW THEREFORE**, be it resolved that the Board of the Wilmington Urban Area Metropolitan Planning Organization hereby certifies the transportation planning process for the Wilmington Metropolitan Planning Organization on this the 29<sup>th</sup> day of March, 2017.

---

Gary Doetsch, Chair

---

Mike Kozlosky, Secretary

## Proposed Revisions to 2016-2025 STIP/MTIP Program

### STIP/MTIP Modifications (January 2017)

|  |  |                |                               |
|--|--|----------------|-------------------------------|
| * C-5600<br>STATEWIDE<br>PROJ.CATEGORY<br>EXEMPT | VARIOUS, STATEWIDE CMAQ PROJECTS TO<br>IMPROVE AIR QUALITY WITHIN<br>NONATTAINMENT AND MAINTENANCE AREAS.<br><u><b>ADD ENGINEERING, RIGHT OF WAY, AND<br/>IMPLEMENTATION IN FY 17 NOT PREVIOUSLY<br/>PROGRAMMED, AT REQUEST OF<br/>TRANSPORTATION PLANNING BRANCH.</b></u> | ENGINEERING    | FY 2017 - \$3,405,000 (CMAQ)  |
|  |  |                | FY 2017 - \$851,000 (S(M))    |
|  |  | RIGHT OF WAY   | FY 2017 - \$1,989,000 (CMAQ)  |
|  |  |                | FY 2017 - \$497,000 (S(M))    |
|  |  | CONSTRUCTION   | FY 2017 - \$23,127,000 (CMAQ) |
| * C-5601<br>STATEWIDE<br>PROJ.CATEGORY<br>EXEMPT | VARIOUS, CMAQ PROJECTS TO IMPROVE AIR<br>QUALITY ACROSS MULTIPLE NONATTAINMENT<br>AND MAINTENANCE AREAS.<br><u><b>ADD OTHER-CATEGORY FUNDING IN FY 17 NOT<br/>PREVIOUSLY PROGRAMMED, AT REQUEST OF<br/>TRANSPORTATION PLANNING BRANCH.</b></u>                             | IMPLEMENTATION | FY 2017 - \$5,782,000 (S(M))  |
|  |  |                | FY 2017 - \$2,400,000 (CMAQ)  |
|  |  |                | FY 2017 - \$600,000 (S(M))    |
|  |  |                | <u>\$38,651,000</u>           |
|  |  | OTHER          | FY 2017 - \$4,494,000 (CMAQ)  |
|  |  |                | FY 2017 - \$1,124,000 (L)     |
|  |  |                | <u>\$5,618,000</u>            |

**WILMINGTON URBAN AREA METROPOLITAN PLANNING ORGANIZATION  
BOARD**

**RESOLUTION APPROVING MODIFICATIONS TO THE  
2016-2025 STATE /METROPOLITAN TRANSPORTATION IMPROVEMENT  
PROGRAMS**

**WHEREAS**, the Wilmington Urban Area Metropolitan Planning Organization provides transportation planning services for the City of Wilmington, Town of Carolina Beach, Town of Kure Beach, Town of Wrightsville Beach, Town of Belville, Town of Leland, Town of Navassa, New Hanover County, Brunswick County, Pender County, Cape Fear Public Transportation Authority and the North Carolina Board of Transportation; and

**WHEREAS**, the Transportation Advisory Committee has found that the Wilmington Urban Area Metropolitan Planning Organization is conducting transportation planning in a continuous, cooperative, and comprehensive manner; and

**WHEREAS**, the North Carolina Board of Transportation adopted the 2016-2025 State Transportation Improvement Program on June 4, 2015 and the Wilmington Urban Area Metropolitan Planning Organization adopted the Statewide/Metropolitan Transportation Improvement Program on June 24, 2015; and

**WHEREAS**, the Wilmington Urban Area Metropolitan Planning Organization desires to modify the State/Metropolitan Transportation Improvement Programs for projects C-5600 and C-5601.

**NOW THEREFORE**, be it resolved that the Board of the Wilmington Urban Area Metropolitan Planning Organization hereby approves amending the 2016-2025 State/Metropolitan Transportation Improvement Programs for projects C-5600 and C-5601.

**ADOPTED** at a regular meeting of the Wilmington Urban Area Metropolitan Planning Organization's Board on February 22, 2017.

---

Gary Doetsch, Chair

---

Mike Kozlosky, Secretary



305 Chestnut Street  
PO Box 1810  
Wilmington, NC 28402  
Ph: (910) 341-3258  
Fax: (910) 341-7801  
www.wmpo.org

## MEMORANDUM

TO: Board members

FROM: Mike Kozlosky, Executive Director

DATE: February 2, 2016

SUBJECT: Wilmington Urban Area MPO 2017-2021 Strategic Business Plan

---

### **Target: Cape Fear Crossing**

#### **Objective:**

Identify the environmental impacts related to the Cape Fear Crossing project and long-term replacement of the Cape Fear Memorial Bridge

#### *Strategies:*

- Complete environmental document for Cape Fear Crossing Project
- Merger Team selects the Least Environmentally Damaging Practical Alternative (LEDPA) for the Cape Fear Crossing Project
- Identify opportunities and constraints for the replacement of the Cape Fear Memorial Bridge
- Identify negative consequences of not beginning pursuit of the replacement of the Cape Fear Memorial Bridge for economic development, safety and regional mobility

#### **Objective:**

Identify and secure funding sources to accelerate the project(s)

#### *Strategies:*

- Identify potential funding sources for MEGA projects
- Collaborate/coordinate with other MPOs / RPOs, NCDOT, etc. to explore and develop funding programs for MEGA projects
- Identify and secure funding to construct the project(s)

#### **Objective:**

Identify and promote the regional benefits of the Cape Fear Crossing and replacement of the Cape Fear Memorial Bridge through public engagement

---

Wilmington Urban Area Metropolitan Planning Organization

City of Wilmington • Town of Carolina Beach • Town of Kure Beach • Town of Wrightsville Beach  
County of New Hanover • Town of Belville • Town of Leland • Town of Navassa • County of Brunswick  
County of Pender • Cape Fear Public Transportation Authority • North Carolina Department of Transportation

---

*Strategies:*

- Promote regional collaboration
- Improve communication about new location and/or upgrade existing options and replacement
- Educate Board/Community/Leaders, etc. on processes
- Show how project plays into the regional puzzle of transportation goals and the network

**Target: Hampstead Bypass**

**Objective:**

Identify and secure funding sources to accelerate the project as quickly as possible

*Strategies:*

- Identify funding sources to accelerate right of way as soon as possible
- Pursue right of way acquisition for all phases of the project

**Objective:**

Identify and promote regional benefits of Hampstead Bypass through outreach and public engagement

*Strategies:*

- Show how project plays into the regional puzzle of transportation goals and the network

**Objective:**

Continue to work to protect the corridor to in an effort to preserve it from development

*Strategies:*

- Ensure Prioritization 4.0/5.0 addresses Map Act
- Address repeal of Map Act
- Continue to have a “champion” for the project

**Target: Independence Boulevard Extension**

**Objective:**

Identify the environmental impacts related to potential alignments for Independence Boulevard Extension

*Strategies:*

- Complete environmental document

**Objective:**

Identify and secure funding for the project



---

*Strategies:*

- Work through STI to develop a strategy to fund the project
- Evaluate other potential funding sources to accelerate the projects construction

**Objective:**

Identify the desired design for Independence Boulevard Extension through engagement with the MPO Board, Wilmington City Council and community

*Strategies:*

- Develop what the project will look like through visualization techniques
- Receive guidance and a position from Board/City Council on elevated vs. at grade design options
- Attain regional concurrence
- Provide information to the Board in an effort to educate on relocation/right of way acquisition process
- Provide information to the Board regarding environmental justice issues/concerns
- Show how project plays into the regional puzzle of transportation goals and the network

**Objective:**

Continue to work to protect the corridor in an effort to preserve it from future development

*Strategies:*

- Protect corridor – reserve/address when selected
- Work with City of Wilmington and NCDOT on the location for the City’s police firing range

**Target: Rail Re-alignment**

**Objective:**

Identify the opportunities and constraints related to the rail re-alignment and re-purposing of the existing rail corridor

*Strategies:*

- Complete feasibility study
- Show how project plays into the regional puzzle of transportation goals and the network

**Objective:**

Identify and assist in securing funding sources to construct the rail re-alignment and re-purposing of the existing rail corridor

*Strategies:*

- Research past grant opportunities
- Identify potential funding sources
- Identify and secure funding sources to accelerate the project

---

**Objective:**

Identify and promote regional benefits of rail re-alignment and re-purposing of the rail line through outreach and public engagement

*Strategies:*

- Work with the City and NCDOT to prepare information on what the rail corridor looks like now vs. in the future

**Objective:**

Identify and gather support from stakeholders to include state, local, and congressional delegation

*Strategies:*

- Secure resolutions and letters of support for the project

**Target: Wallace to Castle Hayne****Objective:**

Identify and secure funding sources to implement the re-establishment of the rail line between Wallace and Castle Hayne

*Strategies:*

- Identify potential funding sources available through STI and grants
- Determine if feasibility study on construction is needed
- Work with other MPOs / RPOs, Port of Wilmington, NCDOT, etc. to pursue re-establishment

**Objective:**

Promote regional benefits of the re-establishment of the rail line through outreach and public engagement

*Strategies:*

- Champion this project through collaboration with other MPOs/RPOs, NCDOT, etc.
- Show how project plays into the regional puzzle of transportation goals and the network

**Target: Increase ILM Direct Routes****Objective:**

Identify and assist ILM in securing additional funding that will allow ILM to grow and expand

*Strategies:*

- Support ILM infrastructure improvements for airport expansion
- Support surrounding roadway infrastructure

---

**Objective:**

Identify and help ILM promote regional benefits of the airport through outreach and public engagement

*Strategies:*

- Assist ILM in promoting their services and making ILM more attractive for existing and potential customers
- Show how project plays into the regional puzzle of transportation goals and the network

**Objective:**

Identify and assist ILM in the expansion of services provided to residents, businesses and visitors

*Strategies:*

- Work with ILM Board to try to attract low cost providers/additional providers
- Promote economic development on and surrounding the airport and within the free trade zone

**WILMINGTON URBAN AREA METROPOLITAN PLANNING ORGANIZATION  
BOARD**

**RESOLUTION ADOPTING THE WILMINGTON URBAN AREA METROPOLITAN  
PLANNING ORGANIZATION'S 2017-2021 STRATEGIC BUSINESS PLAN TARGETS,  
OBJECTIVES AND STRATEGIES**

**WHEREAS**, the Wilmington Urban Area Metropolitan Planning Organization provides transportation planning services for the City of Wilmington, Town of Carolina Beach, Town of Kure Beach, Town of Wrightsville Beach, Town of Belville, Town of Leland, Town of Navassa, New Hanover County, Brunswick County, Pender County, Cape Fear Public Transportation Authority and the North Carolina Board of Transportation; and

**WHEREAS**, the Wilmington Urban Area Metropolitan Planning Organization is required under Federal law to complete the transportation planning process in a Continuous, Comprehensive and Coordinated manner and to complete a fiscally constrained Metropolitan Transportation Plan; and

**WHEREAS**, the Wilmington Urban Area Metropolitan Planning Organization's Board adopted Cape Fear Transportation 2040 in November 2015 and this plan serves as the long-range transportation plan for the region; and

**WHEREAS**, the Wilmington Urban Area Metropolitan Planning Organization's Board has developed a strategic business plan that will guide the focus of the organization over the course of the next 5 years; and

**WHEREAS**, the Wilmington Urban Area Metropolitan Planning Organization's strategic business plan outlines the Board's targets, objectives and strategies and represents the Board's priorities.

**NOW THEREFORE**, be it resolved that the Board of the Wilmington Urban Area Metropolitan Planning Organization hereby adopts the 2017-2021 Strategic Business Plan Targets, Objectives and Strategies.

**ADOPTED** at a regular meeting of the Wilmington Urban Area Metropolitan Planning Organization's Board on February 22, 2017.

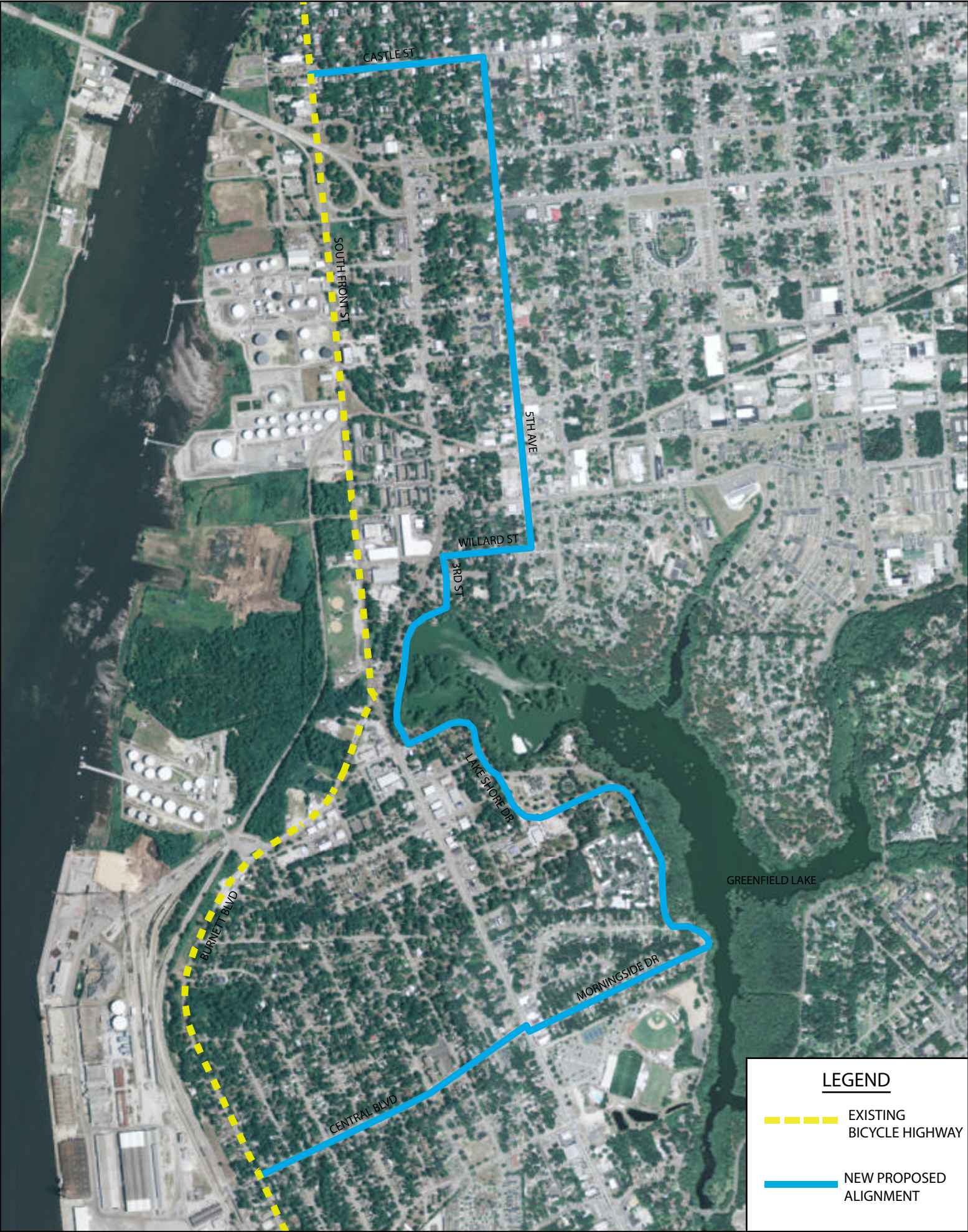
---

Gary Doetsch, Chair

---

Mike Kozlosky, Secretary







**WILMINGTON URBAN AREA METROPOLITAN PLANNING ORGANIZATION  
BOARD**

**RESOLUTION SUPPORTING THE REALIGNMENT OF NORTH CAROLINA  
BICYCLING HIGHWAYS 3 AND 5 AND A REQUEST FOR NCDOT TO REANALYZE  
BICYCLING HIGHWAYS STATEWIDE**

**WHEREAS**, the Wilmington Urban Area Metropolitan Planning Organization provides transportation planning services for the City of Wilmington, Town of Carolina Beach, Town of Kure Beach, Town of Wrightsville Beach, Town of Belville, Town of Leland, Town of Navassa, New Hanover County, Brunswick County, Pender County, Cape Fear Public Transportation Authority and the North Carolina Board of Transportation; and

**WHEREAS**, the responsibility of the Wilmington Urban Area Metropolitan Planning Organization (WMPO) Bicycle and Pedestrian Advisory Committee is to provide recommendations to the WMPO Board with regards to bicycle and pedestrian accommodations; and

**WHEREAS**, in 2016 more than 16,000 trucks moved through the Port of Wilmington, nearly all of which utilized South Front Street to access the Cape Fear Memorial Bridge; and

**WHEREAS**, the North Carolina State Ports Authority requested an alternate route be designated for North Carolina Bicycling Highways 3 and 5 along South Front Street, expressing concerns about the combination of commercial truck traffic and the bicycle highway designations; and

**WHEREAS**, the Wilmington Urban Area MPO Bicycle and Pedestrian Advisory Committee formed a subcommittee composed of NC Ports staff, WMPO Bicycle and Pedestrian Advisory Committee members and WMPO staff to investigate alternatives for the South Front Street corridor; and

**WHEREAS**, the subcommittee determined that the best solution would be to revise North Carolina Bicycling Highways 3 and 5 to better accommodate all groups of cyclists in the region; and

**WHEREAS**, the recommendation is a proposed new route alignment directing cyclist away from the South Front Street corridor onto Caste Street, onto 5<sup>th</sup> Avenue, onto Willard Street, onto 3<sup>rd</sup> Street which leads to a multi-use path around Greenfield Lake, onto Lake Shore Drive, onto Morningside Drive, crossing to Central Boulevard, which dead ends into Burnett Boulevard picking back up onto the current Bicycle Highways 3 and 5; and

**WHEREAS**, the Wilmington Urban Area Metropolitan Planning Organization's Bicycle and Pedestrian Advisory Committee approved this recommendation on January 17, 2017.

**NOW THEREFORE**, be it resolved that the Board of the Wilmington Urban Area Metropolitan Planning Organization hereby supports the Bicycle and Pedestrian Advisory Committee's recommendation for the re-alignment of North Carolina Bicycling Highways 3 and 5 to the aforementioned route.

**NOW THEREFORE**, also be it resolved that the Board of the Wilmington Urban Area Metropolitan Planning Organization hereby requests that the North Carolina Department of Transportation create a process to re-analyze designated Bicycling Highways statewide.

**ADOPTED** at a regular meeting Wilmington Urban Area Metropolitan Planning Organization's Board on February 22, 2017.

---

Gary Doetsch, Chair

---

Mike Kozlosky, Secretary



305 Chestnut Street  
PO Box 1810  
Wilmington, NC 28402  
Ph: (910) 341-3258  
Fax: (910) 341-7801  
www.wmpo.org

## MEMORANDUM

TO: TCC members

FROM: Mike Kozlosky, Executive Director

DATE: February 1, 2017

SUBJECT: Remaining STBGP-DA and TASA-DA Balance

As discussed at the January Board meeting, the MPO has \$2,809,338 available for award in the 2017 Surface Transportation Block Grant Program-Direct Attributable (STBGP-DA) and Transportation Alternatives Set Aside- Direct Attributable (TASA-DA) programs; however, only \$1,297,776 was requested in the FY 2017 Call for Projects. This leaves a total of \$1,511,562 in un-allocated funds. A goal of the organization is to ensure the utilization of these funds on an annual basis. Staff has identified several options below in which these funds could be utilized by the Board:

**A. Hold in Reserve which would allow the member jurisdictions to request additional federal dollars towards their existing projects**

It has been brought to staff's attention that many of the existing Surface Transportation Program- Direct Attributable and Transportation Alternatives Program- Direct Attributable projects are likely to be under-funded based upon current construction cost estimates and un-anticipated charges. At this point, it is estimated that the total federal match balance needed to address this shortfall is between \$1 million and \$1.5 million. Holding these funds in reserve would allow the members to tap into these federal funds for these anticipated cost overruns.

**B. Open up a second call for projects to interested member jurisdictions**

The Wilmington Urban Area MPO issued a call for projects in September 2016 with submittals due in November 2016. The MPO received 4 submittals and awarded funds to each of these projects. A second call for projects would make these funds available to our members for project development and implementation. If a second call is desired by the Board, discussions would need to take place with our members to determine if there is sufficient staff capacity to manage these additional projects. The Board would also need to determine whether members which have already been awarded funds in 2017 could apply for additional projects.

Wilmington Urban Area Metropolitan Planning Organization



---

**C. Contact NCDOT to gauge interest in utilizing funds or to offset funding shortfalls on NCDOT STIP projects in the region**

There are a number of roadway projects that are being managed by the North Carolina Department of Transportation in our region. One option is to provide funding directly to the Department to be utilized on their projects or to cover un-anticipated shortfalls. If this is the desired use of these funds, additional discussions would need to take place between the MPO and NCDOT to determine which projects these funds could be allocated to in our MPO boundary.

**D. Flex funding for the purchase of buses for the Cape Fear Public Transportation Authority**

Another potential use would be to flex these funds to the Federal Transit Administration (FTA) for the replacement of Cape Fear Public Transportation Authority buses. The Authority could utilize \$1,488,000 in funding for the purchase of four CNG buses to be used throughout the region. Under this proposal by the Authority, a 20% local match in the amount of \$372,000 could be provided by the City of Wilmington and UNCW. Additional matching assistance would also be sought from NCDOT. The purchase of the buses could occur as soon as the funds are flexed from FHWA to FTA, and the maximum delivery time of the buses is no more than 365 days under the current contract with the manufacturer.

**E. Provide funding to determine the Least Environmentally Damaging Practical Alternative (LEDPA) for the Cape Fear Crossing**

The North Carolina Department of Transportation continues work on the environmental document for the Cape Fear Crossing project. The Department plans to present to the MPO Board in March and Merger Team in April in hopes of receiving approval on Concurrence Point 2A (Bridging Decisions and Alignment Review). Since the project did not receive funding through the most recent round of prioritization, the Department has proposed to cease work on the study following approval of this step. The estimated cost to continue from Concurrence Point 2A to Concurrence Point 3- Least Environmentally Damaging Practical Alternative (LEDPA) is \$1.8 million. Providing these remaining funds to this project would carry the current study past Concurrence Point 2A to the LEDPA. This will result in obtaining the final selection for the corridor and the draft environmental report. This option is consistent with the priorities that the Board has identified as part of the strategic business plan.

Staff is seeking direction from the Board regarding interest in pursuing one and/or a combination of these options, or any other options that may be desired by the Board.

Proposed Revisions to 2016-2025 STIP/MTIP Program

STIP/MTIP Modifications  
(February 2017)

|  |   |   |  |
|--|---|---|--|
| U-5729A<br>NEW HANOVER<br>STATEWIDE<br>PROJ.CATEGORY | US 421, US 117 (SHIPYARD BOULEVARD).<br>INTERSECTION IMPROVEMENTS.<br><u>TO ALLOW ADDITIONAL TIME FOR PLANNING<br/>AND DESIGN AND FOR RIGHT OF WAY<br/>ACQUISITION AND UTILITY RELOCATION, DELAY<br/>RIGHT-OF-WAY FROM FY 18 TO FY 19 AND<br/>CONSTRUCTION FROM FY 21 TO FY 22.</u>                                   | RIGHT OF WAY<br>UTILITIES<br>CONSTRUCTION | FY 2019 - \$1,000,000 (T)<br>FY 2019 - \$500,000 (T)<br>FY 2022 - <u>\$2,400,000 (T)</u><br>\$3,900,000  |
| U-5729B<br>NEW HANOVER<br>REGIONAL<br>PROJ.CATEGORY  | US 421, US 421 (BURNETT AVENUE) TO US 117<br>(SHIPYARD BOULEVARD) IN WILMINGTON.<br>UPGRADE ROADWAY.<br><u>TO ALLOW ADDITIONAL TIME FOR PLANNING<br/>AND DESIGN AND FOR RIGHT OF WAY<br/>ACQUISITION AND UTILITY RELOCATION, DELAY<br/>RIGHT-OF-WAY FROM FY 18 TO FY 19 AND<br/>CONSTRUCTION FROM FY 21 TO FY 22.</u> | RIGHT OF WAY<br>UTILITIES<br>CONSTRUCTION | FY 2019 - \$3,000,000 (T)<br>FY 2019 - \$275,000 (T)<br>FY 2022 - \$3,333,000 (T)<br>FY 2023 - \$3,333,000 (T)<br>FY 2024 - <u>\$3,334,000 (T)</u><br>\$13,275,000 |



305 Chestnut Street  
PO Box 1810  
Wilmington, NC 28402  
Ph: (910) 341-3258  
Fax: (910) 341-7801  
www.wmpo.org

**TO:** TCC Members  
**FROM:** Suraiya Motsinger, Senior Transportation Planner  
**DATE:** February 2, 2017  
**SUBJECT:** **WMPO Prioritization 5.0 Projects to Investigate through Pre-Submittal Process**

---

The North Carolina Department of Transportation (NCDOT) Strategic Prioritization Office of Transportation (SPOT) released a schedule outlining the Prioritization 5.0 (P 5.0) process. The P 5.0 Process will include a pre-submittal window in March 2017 to allow MPOs, RPOs and Division Engineers to test aspects of project scoring before the final P 5.0 submittal. The details of the pre-submittal process have not yet been finalized, but WMPO Staff has prepared a list of potential projects to test by mode during this P 5.0 pre-submittal window as opportunities arise. It is important to note that the pre-submittal procedures have not yet been released by NCDOT and the WMPO's ability to test potential projects may be limited by the finalized pre-submittal procedures. The projects in the list below encompass staff's proposal of anticipated new project submittals appropriate for testing as allowed in the finalized pre-submittal process:

#### **Roadway**

1. R-4 Castle Hayne Road Widening (US74/MLK Jr. Parkway to Holly Shelter Road)
2. R-6 Gordon Road Widening (NC132 Interchange to US17BUS/Market Street)
3. R-33 Kerr Avenue Widening (Patrick Avenue to Wrightsville Avenue)
4. R-34 Old Fayetteville Road Widening (Village Road to US74/76/Andrew Jackson Highway)
5. R-35 N 23<sup>rd</sup> Street Widening (NC133/Castle Hayne Road to US74/MLK Jr. Parkway)
6. R-36 NC210 Improvements (NC210/Island Creek Road to US17)
7. R-39 Country Club/Doral Drive and Sloop Point Loop Road
8. R-40 Kerr Avenue Extension (Wrightsville Avenue to US76/Oleander Drive)
9. R-41 I-74 Upgrade (US17/74/76 to WMPO Boundary)
10. R-43 Front Street and Carolina Beach Road Intersection
11. R-44 Old Fayetteville Road Interchange
12. R-46 Greenville Avenue & Oleander Drive Intersection
13. R-47 Shipyard Boulevard Access Management (US421/Carolina Beach Road to Rutledge Drive)
14. R-50 Burnett Boulevard Widening (US421/Carolina Beach Road to Myers Street)
15. R-52 US17 to NC133 Connection (US17 to NC133)
16. R-53 NC133 River Road Widening (US17/74/76 to Rabon Way SE)
17. R-55 Magnolia Drive Extension (Mount Misery Road to Old Mill Road)
18. R-57 River Road Widening (Independence Boulevard to US421/Carolina Beach Road)
19. R-58 Cape Fear River Crossing\* (US17/Andrew Jackson Highway to US421/Carolina Beach Road)

*\*If feasible through NCDOT SPOT pre-submittal procedures, staff intends to evaluate both the options of a new location project and a project to upgrade existing facilities.*

---

#### Wilmington Urban Area Metropolitan Planning Organization

City of Wilmington • Town of Carolina Beach • Town of Kure Beach • Town of Wrightsville Beach  
County of New Hanover • Town of Belville • Town of Leland • Town of Navassa • County of Brunswick  
County of Pender • Cape Fear Public Transportation Authority • North Carolina Department of Transportation

---

### **Bicycle and Pedestrian**

1. BP-1 S. 17<sup>th</sup> Street (Hospital Plaza to Independence Blvd)
2. BP-2 Peachtree Ave (Park Ave to MacMillan Ave)
3. BP-3 N. College Rd (New Town Rd to Danny Pence Dr)
4. BP-4 Wooster St (S. 8<sup>th</sup> Street to Oleander Dr)
5. BP-5 Wilshire Blvd (Wrightsville Ave to Kerr Ave)
6. BP-6 College Rd & Wilshire Blvd
7. BP-7 5<sup>th</sup> Ave (Ann St to Greenfield Lake Park)
8. BP-8 College Rd (Hurst Dr to Randall Pkwy)
9. BP-9 5<sup>th</sup> Ave (Rail Line North of Cambell St to Ann St)
10. BP-10 Wilshire Blvd (Kerr Ave to MacMillan Ave)
11. BP-12 College Rd (Wrightsville Ave to Wilshire Blvd)
12. BP-13 College Rd & Oleander Dr
13. BP-14 23<sup>rd</sup> St (One Tree Hill Way to Princess Place Dr)
14. BP-15 N College Rd (NE Northchase Pkwy to New Village Way)
15. BP-16 New Centre Dr (Market St to College Rd)
16. BP-18 Carolina Beach Rd & Front St/Burnett Blvd
17. BP-19 Independence Blvd Ext (Randall Pkwy to South of MLK Pkwy)
18. BP-21 College Rd (Randall Pkwy to New Centre Dr)
19. BP-23 Dow Rd (Clarendon Ave to Lake Park Blvd)

### **Public Transportation**

1. Route 103 Amenity Upgrades (Oleander East)
2. Route 104 Amenity Upgrades (Northeast)
3. Route 106 Amenity Upgrades (Shipyard Boulevard)
4. Route 201 Amenity Upgrades (Carolina Beach Road)
5. Route 202 Amenity Upgrades (Oleander West)
6. Route 204 Amenity Upgrades (Brunswick Connector)
7. Route 205 Amenity Upgrades (Long Leaf Park)
8. MT-119 Wilmington Multimodal Transportation Center

### **Rail**

1. FR-3 Front Street lead railroad signalization and gates
2. FR-4 Study at-grade rail crossings conflicts on WTRY and spur lines near Port of Wilmington (multiple locations)
3. FR-5 US421 Railroad crossing safety improvements south of I-140/Dan Cameron Bridge
4. FR-6 US421 Railroad extension from Invista to Pender Commerce Park
5. FR-7 - At-Grade rail crossing conflicts on NCDOT and CSX lines (multiple locations)
6. FR-16 Freight rail connection from Castle Hayne to Wallace
7. FR-17 Construct rail across the Cape Fear River between NC Port Of Wilmington and Davis Yard
8. FR-24 Wilmington Multimodal Transportation Center

### **Aviation**

1. A-1 GA Apron Development, Phase II
2. A-5 Airport Layout Plan
3. A-6 Terminal Improvements Phase I (Design)
4. A-7 Terminal Improvements Phase I (Construction)

- 
5. A-8 Terminal Improvements Phase II (Design and Construction)
  6. A-9 Rehab GA Apron Ramp North; Pipe Ditch in FBO #2 Area; Direct to EDDB (Construction)
  7. A-10 Outbound Beg Room Retrofit
  8. A-11 Taxiway A and H Widening and Paved Shoulders
  9. A-12 BCA/EA for Runway 24 Extension
  10. A-13 Extend Runway 24 - Phase II of IV
  11. A-14 Design and Construction of Boat Launch for Water Access
  12. A-15 Map on Airport Utilities
  13. A-16 Hanger Taxilane
  14. A-17 Air Carrier Apron Expansion (Design)\*
  15. A-18 Air Carrier Apron Expansion (Construction)
  16. A-19 Taxiway B Improvements
  17. A-20 Perimeter Road Improvements
  18. A-21 Kerr Avenue Drainage Upgrades for Runway
  19. A-22 Widen Taxiways

**Ferry**

1. F-1 New river class vessel (Southport to Ft. Fisher)
2. F-2 Southport Additional Mooring Facilities



# Cape Fear Crossing

## STIP U-4738

### Brunswick and New Hanover Counties

---

#### PROJECT STATUS REPORT

January 31, 2017

##### Project Description

The Cape Fear Crossing project is proposed as a roadway extending from the vicinity of US 17 Bypass and I-140 in Brunswick County to US 421 in New Hanover County, including a crossing of the Cape Fear River. The project is programmed in the approved 2016-2025 and draft 2017-2027 STIP for planning and environmental studies only using STPDA funding from the Wilmington MPO.

The following list includes tasks during the month of January:

##### Current Activities

- The project team continues to coordinate and correspond with project stakeholders.
- Studies for the Traffic Noise Analysis and Air Quality Analysis are ongoing.
- An update to the Draft Natural Resources Technical Report is ongoing.
- The Draft Sea Level Rise Assessment is under review by NCDOT.
- The Draft Archaeological Predictive Model Update is under review by NCDOT.
- Right-of-Way cost estimates and relocation reports have been initiated.
- NCDOT is currently evaluating an additional alternative proposed by the WMPO near the Port of Wilmington. There are currently 12 alternatives being designed and evaluated for inclusion in the draft environmental document. NCDOT is coordinating with the NCSPA regarding this alternative; if it is determined this alternative is reasonable, studies may need to be redone to include this alternative.

##### Upcoming Activities

- The project team will provide the State Historic Preservation Office with additional information regarding impacts to various resources to finalize the Section 106 effect calls.
- The project team will plan to present the status of the project to the WMPO TAC in March 2017 before holding the next NEPA/Section 404 Merger Team Meeting.

##### Past Activities

- The project team held the Section 106 Effects meeting with the State Historic Preservation Office and Federal Highway Administration on 12/08/2016.
- The NEPA/Section 404 Merger Team reached Concurrence Point 1 – “Purpose and Need and Study Area Defined” on 12/12/2013.
- The NEPA/Section 404 Merger Team reached Concurrence Point 2 – “Detailed Study Alternatives Carried Forward” on 2/10/2014.
- Technical documents that have been finalized are available on the project website under “Project Documents.”

##### Contact Information

NCDOT – Jay McInnis, [jmcinnis@ncdot.gov](mailto:jmcinnis@ncdot.gov), 919.707.6029

AECOM – Joanna Rocco, [joanna.rocco@aecom.com](mailto:joanna.rocco@aecom.com), 919.239.7179

Website: <http://www.ncdot.gov/projects/capefear/>

Email: [capefear@ncdot.gov](mailto:capefear@ncdot.gov)

Hotline: 1.800.233.6315

**WILMINGTON MPO**  
**TRANSPORTATION PLANNING**  
**FEBRUARY 2017**

**17TH STREET STREETScape**

**Project Descriptions/Scope:** The 17th Street streetscape project will include upgrades to 17th Street between Wrightsville Avenue and Princess Place Drive. The project will provide for a more efficient transportation system by reduced travel speeds, removal of the lateral shift, improved pedestrian crossings, improved safety and enhance the aesthetics of the area. The project may also include aesthetic improvements that will enhance the entryway into Carolina Heights and provide a pocket park. The project had a bid opening on March 3rd. The City awarded the construction contract to Lanier Construction on June 21st. Construction began on August 22nd. Construction is on-going and anticipated to last 9 months.

**Next Steps:**

- Complete construction of the improvements

**GULCH GREENWAY MASTER PLAN**

**Project Description/Scope:** Create a master plan to guide the development of a section of trail located in the former railroad bed between 3rd and McRae Streets in downtown Wilmington. This section of trail is identified in the Wilmington/New Hanover County Comprehensive Greenway Plan as part of the top-ranked “Downtown Trail”. A lease for the right-of-way for this section of future trail has been authorized through SB174. The master plan will utilize broad community and stakeholder engagement to lay out a conceptual design towards successful funding and construction of this project. This plan is being created through a joint effort between the Wilmington MPO, NCDOT, City of Wilmington, and the Cape Fear Public Transportation Authority.

**Next Steps:**

- Implement the Public Outreach Plan to develop public engagement/marketing tools to include a project website, a PowerPoint template, and other marketing materials
- Officially launch the project and engage the public/stakeholders in the development of the plan
- Finalize existing conditions analysis work to inform the development of the trail’s conceptual design

**MAYOR’S RAIL RE-ALIGNMENT TASK FORCE**

**Project Description/Scope:** The City of Wilmington has appointed a Mayor’s Task Force to evaluate the feasibility of re-aligning the rail line that currently traverses the City of Wilmington and potentially re-purpose this rail line for another use. This project is jointly funded by the City of Wilmington, North Carolina Department of Transportation and Wilmington MPO. Moffatt & Nichol is completing the study. The draft Physical Conditions, Socio-economic Conditions, Financial Conditions and Legal Conditions reports have been reviewed and comments have been provided to the consultant.

**Next Steps:**

- The consultant is currently evaluating potential rail alignments and preparing the draft Engineering Analysis, Environmental Analysis and Financial Analysis reports.
- Prepare the implementation schedule, cost/benefit analysis and executive summary
- Host public meetings on February 20<sup>th</sup> and February 22<sup>nd</sup>

## **METROPOLITAN TRANSPORTATION PLAN**

**Project Description/Scope:** Update the Federally-mandated Metropolitan Transportation Plan/Long-Range Transportation Plan for the Wilmington Urban Area Metropolitan Planning Organization. The plan was adopted by all Wilmington Urban Area Metropolitan Planning Organization member jurisdictions and the WMPO Board. The MPO is developing the 2017-2021 Strategic Business Plan in an effort to implement the MTP. Consensus of the Board was to move forward with formal approval at the February meeting.

### **Next Steps:**

- Seek formal Board approval at the February 22<sup>nd</sup> meeting

## **ON-CALL PLANNING STUDIES**

**Project Description/Scope:** The Wilmington Urban Area MPO will be utilizing on-call consultants to assist with special studies. The MPO solicited proposals and received 15 responses for these planning services. The MPO has selected 4 firms. These firms will be used to complete long-range planning studies to include the Leland Street design manual and northern New Hanover County Collector Street Plan funded in the current fiscal year and future planning projects funded by the MPO in the Unified Planning Work Program.

### **Next Steps:**

- Select Firms to complete the Leland Street Design Manual and northern New Hanover Collector Street Plan

## **SITE DEVELOPMENT REVIEW**

**Project Descriptions/Scope:** The Wilmington MPO assists with site development and transportation impact analysis review for the MPO's member jurisdictions. During the last month, staff has reviewed the following development proposals:

- New Hanover County Development Plan Reviews: 3 reviews
- New Hanover County Informal Plan Reviews: 1 reviews
- New Hanover Concept Reviews: 0 reviews
- Town of Leland Formal Reviews: 2 reviews
- Town of Leland Informal Reviews: 2 reviews
- Town of Carolina Beach Formal Reviews: 2 reviews
- Town of Carolina Beach Informal Reviews: 0 reviews
- Brunswick County Formal Plan Reviews: 0 reviews
- Brunswick County Informal Plan Reviews: 0 reviews
- TIA Reviews: 16 total (New Hanover County 3, City of Wilmington 7, Carolina Beach 0, Leland 1, and Pender County 5) new 0 and ongoing 16
- Pender County Development Plan Reviews: 9 reviews
- Pender County Informal Plan Reviews: 1 reviews
- Pender County Concept Reviews: 0 reviews
- City of Wilmington Formal Reviews: 40 (3 new, 37 on-going)
- City of Wilmington Informal Reviews: 20 ( 5 new, 15 on-going)
- City of Wilmington Concept Reviews: 7 ( 5 new concept reviews- 2 on-going concept)
- COW Project Releases: 6 Full releases



**STP-DA/TAP-DA FY 2013, 2014 and 2015 Project Status**  
**STP-DA**

**U-5534A - TOWN OF NAVASSA – MAIN STREET BICYCLE LANES**

**Project Descriptions/Scope:** This project will include planning, design, and construction of an additional 4 feet on either side of Main Street for bike lanes starting at the existing Navassa bike path east of Brooklyn Street to Old Mill Road. A resolution was approved to remove this project from the STIP and re-allocate the funds to the Navassa Park Multi-use project.

**Next Steps:**

- Removal in process

**U-5534B - CITY OF WILMINGTON- HEIDI TRASK DRAWBRIDGE**

**Project Descriptions/Scope:** This project consists of construction of a public walkway/pier underneath the Heidi Trask Drawbridge to provide for a safe crossing for cyclists and pedestrians across US 74 (Wrightsville Avenue) on the mainland side of the drawbridge in Wilmington.

**Next Steps:**

- Construction contract awarded to Intercoastal Marine, LLC
- Preliminary plan to address utility conflict has been received and circulated to the contractor
- NCDOT and contractor's engineer working out helical pile and cross-bracing design
- Alternative selected for addressing later loads on the piles. Supplier providing details for contractor pricing.

**U-5534C - WRIGHTSVILLE AVENUE/GREENVILLE AVENUE TO HINTON AVENUE**

**Project Descriptions/Scope:** The project is for construction of intersection re-alignment improvements at the intersection of Wrightsville Avenue/Greenville Avenue and bike lanes and sidewalks along Greenville Avenue from Wrightsville Avenue to Hinton Avenue.

**Next Steps:**

- Final plan package and contract documents anticipated submission March 15, 2017
- Property acquisition issues on two of the parcels (same owner). Anticipate R/W acquisition completed May 2017.
- Finalizing comments from CFPUA

**U-5534D - TOWN OF LELAND - OLD FAYETTEVILLE ROAD MUP**

**Project Descriptions/Scope:** This project is for design and construction of a ten foot (10') wide multi use path, separate but adjacent to Old Fayetteville Road, beginning at or around the corner of the Leland Town Hall Campus and ending at the driveway of the North Brunswick High School.

**Next Steps:**

- Revised 75% Submittal anticipated May 2017
- Begin R/W acquisition anticipated December 2017
- Construction contract let is anticipated in May 2018

**U-5534E - TOWN OF CAROLINA BEACH - ISLAND GREENWAY AND HARPER AVENUE**

**Project Descriptions/Scope:** This project is for the design and construction of an off-road multi-use path that begins at Mike Chappell Park and winds along the existing cleared fire path and terminates at Alabama Avenue and the Harper Avenue bike lanes will consist of a bicycle boulevard on existing pavement on each side of Harper Avenue from Dow Road to Lake Park Boulevard. The Town desires to combine the project with the awarded 2014 STP-DA project. The right of way certification received December 14, 2016.

**Next Steps:**

- Comments on 95% plans and contract documents received 1/10/17
- Anticipated let date needs adjustment: March 16, 2017 is no longer a valid date since construction fund authorization has not been requested. The project could be delayed to May or June 2017 depending on when funds are requested.

**U-5534F – CITY OF WILMINGTON – PARK AVENUE MUP – PHASE II**

**Project Descriptions/Scope:** This project is for the design and construction of an off-road multi-use path between Audubon Boulevard and Kerr Avenue. The right of Way certification was received November 2, 2016.

**Next Steps:**

- Final plans, specifications, contract documents, and final cost estimate need to be submitted to NCDOT for review
- Project let anticipated August 2017

**U-5534S (Formerly U-5534M)– Coral Drive Sidewalks**

**Project Descriptions/Scope:** The construction of sidewalks along coral drive will install approximately 954 feet of 5 foot wide sidewalk on Coral Drive adjacent to Wrightsville Beach Elementary. The Letters of Interest has closed and the Town has received proposals.

**Next Steps:**

- The Town is working through contract negotiations with the consultant. Anticipated design NTP late February 2017.
- Anticipated Let Date: November 2017. May need to push to contractor NTP to summer 2018 due to amount of school traffic on the roadway.

**U-5534H – HINTON AVE MULTI-USE PATH**

**Project Descriptions/Scope:** This project consists of the construction of a 10' wide multi-use path along Hinton Avenue from Park Avenue to Greenville Avenue.

**Next Steps:**

- Plan comments have been received from NCDOT
- City following up on revised scope from McKim and Creed
- Revised 60% plans anticipated by May 2017
- Anticipated Let Date of Fall 2018

**U-5534G –HOOKER ROAD MULTI-USE PATH**

**Project Descriptions/Scope:** The project consist of the construction of a 10' wide multi-use path along Hooker Road from Wrightsville Avenue to Mallard Drive/Rose Ave intersection

**Next Steps:**

- Plan comments have been received from NCDOT
- City following up on revised scope from McKim and Creed
- Revised 60% plans anticipated by May 2017
- Anticipated Let Date of Fall 2018

**U-5534K –LELAND MIDDLE SCHOOL SIDEWALK**

**Project Descriptions/Scope:** The construction of 5 foot wide concrete sidewalk adjacent to Old Fayetteville Road from Ricefield Branch Rd to the Hwy 74/76 overpass after Glendale Drive with connections to Leland Middle School and the surrounding neighborhoods. The design plans are complete.

**Next Steps:**

- Right of way acquisition underway
- Right of way Certification anticipated April 2017
- Anticipated Let Date: August 20172017
- LOI for CEI services has been reviewed. Interviews underway.

**U-5534J –OLD FAYETTEVILLE LOOP ROAD PEDESTRIAN LOOP**

**Project Descriptions/Scope:** The construction of 5 foot wide sidewalks in three locations: along Village Road from Town Hall Drive going southeast to the existing sidewalk in front of the apartment complex, along Town Hall Drive from Village Road NE to the sidewalk currently under construction by the new Town Hall, and along Old Fayetteville Road from the existing sidewalk in front of the apartment complex to Village Road NE. The design plans are complete.

**Next Steps:**

- Right of way acquisition underway
- Right of way Certification anticipated April 2017
- Anticipated Let Date: August 20172017
- LOI for CEI services has been reviewed. Interviews underway.

**U-5534I –VILLAGE ROAD MULTI-USE PATH EXTENSION**

**Project Descriptions/Scope:** The construction of a 10 foot wide asphalt multi-use path routed across Perry Ave, behind the library, out to Village Road, down Village Road ending on the western edge of the First Baptist Church property before the Sturgeon Creek Bridge. The design plans are complete.

**Next Steps:**

- Right of way acquisition underway
- Right of way Certification anticipated April 2017
- Anticipated Let Date: August 20172017
- LOI for CEI services has been reviewed. Interviews underway

**SHIPYARD BOULEVARD SIDEWALK-**

**Project Description/Scope:** The construction of a sidewalk and bus pull-out along Shipyard Boulevard between Vance Street and Rutledge Drive. This will be a partnership between the City of Wilmington, Cape Fear Public Transportation Authority and Wilmington MPO.

**Next Steps:**

- 25% plan submittal provided to NCDOT 1/23/17. Anticipating comments by 2/17/17.
- Design completion anticipated August 2017

**U-5534O Cape Fear Blvd Multi-Use Path –**

**Project Description/Scope:** The construction of approximately 3200 lf of 10' wide paved off-road Multi-use Path along the south side of Cape Fear Blvd. from 6<sup>th</sup> Street to Dow Road.

**Next Steps:**

- Design consultant agreement executed
- 25% plan review completed by WMPO. Review underway by NCDOT in Raleigh.

**U-5534Q –S. College/Holly Tree Crosswalks –**

**Project Description/Scope:** The project will install sidewalk, ADA ramps, Curb and gutter, markings and traffic signal revisions required to install actuated pedestrian crossings of S. College Road and crossings on Holly Tree Road.

**Next Steps:**

- City working on consultant contract
- City to provide the survey for the project

**U-5534P –Westgate Multi-Use Path (Design Phase) –**

**Project Description/Scope:** funding for preliminary engineering and design phase services for this project in the amount of \$96,172

**Next Steps:**

- PE authorization request has been rescinded
- Project is on hold until the Town determines the route for the project

**TAP-DA****CITY OF WILMINGTON – MILITARY CUTOFF ROAD MULTI-USE PATH**

**Project Descriptions/Scope:** This project is for the design and construction of a 10-foot wide, asphalt multi-use path on Military Cutoff Road from Eastwood Road to Drysdale Drive.

**Next Steps:**

- City is negotiating with LJB for design services
- Anticipated let date Fall 2018

**U-5527B CITY OF WILMINGTON – 5<sup>th</sup> AVE INTERSECTION UPGRADES**

**Project Descriptions/Scope:** This project is for the construction of high visibility crosswalks, curb ramps, and pedestrian activated signals on 5th Ave at the Dawson Street and Wooster Street intersections.

**Next Steps:**

- City of Wilmington is preparing plans for the project
- Signal plans sent to NCDOT for review.
- Quantities and specs are complete

- Right-of-way certification has been obtained
- PCE approval received
- Anticipated Let Date: April 2017

#### **U-5527C NEW HANOVER COUNTY – MIDDLE SOUND GREENWAY – EXTENSION TO MIDDLE SOUND VILLAGE**

**Project Descriptions/Scope:** This project is for the construction of a multi-use path along Middle Sound Loop Road from Oyster Lane to the Middle Sound Village driveway.

##### **Next Steps:**

- NHC conducting interviews for consultant selection

#### **U-5527D HARPER AVE. MULTI-USE PATH**

**Project Descriptions/Scope:** The construction of approximately 2104 lf of 10' wide paved multi-use path along Harper Ave. from Dow Road to 6th Street

##### **Next Steps:**

- NCDOT Agreement is in place
- PE funds authorized August 2, 2016
- Anticipating advertisement for PE services January 2017
- Anticipated let date June 2018

#### **TRANSPORTATION DEMAND MANAGEMENT PROGRAM**

**Project Description/Scope:** UNCW is taking the role as lead employer for the Cape Fear region. The WMPO will coordinate with UNCW to work with other major employers in the region to identify opportunities for public outreach, marketing, carpooling, vanpooling, alternative/compressed work schedules, Emergency Guaranteed Ride Home, park and ride lots, etc. The MPO established 2 park and ride lots in Brunswick County and a ridesharing program that began on January 5, 2015. The MPO adopted "Work Cape Fear: Expanding Commuter Options in the Cape Fear Region" TDM Short Range Plan on January 28, 2015 and also authorized staff to apply for a TDM grant through NCDOT that if approved would fund a full-time TDM Coordinator position. The Agreement with NCDOT for the full-time TDM Coordinator position was approved on November 4, 2015. The Wilmington MPO has hired a full-time TDM Coordinator. Pulsar is continuing to develop branding materials for the TDM program.

##### **Next Steps:**

- Continue regularly scheduled TDM Committee meetings
- Meet with TDM Committee and Pulsar to review proposed branding materials
- Partner with K-12 schools in WMPO jurisdiction to provide carpool opportunities to parents
- Partner with UNCW to explore carpool matching options and guaranteed ride home strategies
- Coordinate with employers to implement 2 additional vanpool programs and potential Park & Ride lot locations
- Coordinate bike share presentations for interested employers



## **Cape Fear Public Transportation Authority**

### **Project Update**

**February 2017**

#### **GENERAL AUTHORITY PROJECTS**

- 1. Bus fleet replacement** - (no significant change) identifying state and federal funding opportunities to replace ten thirty-five foot buses and two trolleys. The Authority continues to seek federal funding for replacement buses.
- 2. Short Range Transportation Plan** - (no significant change) following adoption of Cape Fear Transportation 2040 by the Wilmington Metropolitan Planning Organization (WMPO), Wave Transit is preparing to begin its latest short range plan. The plan will set a course for public transportation initiatives, route structure and revenue programming for the next five years. The plan will also include a financial element to ensure that transit programs are compliant with FTA rules and regulations.  
Under the direction of the Authority's Operations and Planning Committee made up of Board members, staff, WMPO staff, passengers, interested citizens, and professional transit planning consultants, the 9 - 12 month plan is an important tool in identifying and quantifying the public transportation needs of the community. Marketing, public relations and community support for financing transit in Southeastern North Carolina will also be a focus of the plan. A key component of the plan will be extensive surveying to assess the needs of current and prospective passengers. An RFP for consulting services to undertake the plan was issued November 01, 2016. Proposals are being evaluated with an expected award on February 26, 2017.
- 3. Long Term Funding** - (no significant change) currently, the Authority does not have a dedicated source of local funding. An initiative to analyze long term revenue stability of Wave Transit has also been proposed by the City of Wilmington. This effort is critical to the long term financial health of the Authority. Strategies to meet future revenue requirements will be identified during SRTP development. The Authority has drafted a short range final plan which was adopted on January 26, 2017. A copy of the plan will be issued to members of the WMPO Board.
- 4. Shelter Program** - (no significant change) a program to replace and add up to 50 bus shelters and 25 benches at bus stops is underway. Construction of the first five shelters is complete. Construction of an additional three shelters is nearing completion. Phase two, consisting of 12 shelters and 15 benches is expected to begin in March 2017. Phase three consisting of three super stops at Independence Mall, Hanover Center, and Monkey Junction is in the engineering and permitting phase.

#### **WMPO SPONSORED PROJECTS**

- 1. Pleasure Island Special Appropriation** - an STBGP-DA transfer was approved by the WMPO in 2016 for \$75,000 to support Wave Transit route 301. The process of flexing the funds from FHWA to FTA is in process and expected to be complete in the first quarter of calendar 2017.

- 2. Wilmington Multimodal Transportation Center** - An Interlocal Agreement between Authority, City of Wilmington, WMPO, and NCDOT has been executed. Demolition of Haul building is complete. The NEPA document has been submitted and approved by FTA making the project eligible for federal funding. Thanks to generous support from the WMPO, STP-DA funding in the amount of \$2,400,000 has been flexed by FHWA to FTA for the project and a formal grant with FTA has been submitted. Approval of the grant application is expected in the first quarter of calendar 2017.

The real property transfer is complete. A contract with HR Associates for stabilization construction management and design of the renovations to the Neuwirth Motors and Thomas Grocery buildings has been executed. Due to issues with the original stabilization design under contract to NCDOT, stabilization design and engineering will need full revision. A Task Order in the amount of \$54,900 has been issued by the Authority to HR Associates of Wilmington for stabilization redesign. Stabilization redesign is expected to take four to five weeks. Stabilization construction has been moved to spring 2017 for completion in summer/fall 2017. Renovation of the Neuwirth Building expected to commence fall 2017 with completion early in 2018.
- 3. Preventive Maintenance & ADA** - STP-DA funding in the amount of \$350,000 for preventive maintenance and ADA service throughout the region was approved by the WMPO in 2016. The process of flexing the funds from FHWA to FTA is in process and expected to be complete in the first quarter of calendar 2017. The funds will assist the Authority in maintaining its fleet of fixed route buses and FTA funded facilities to meet the FTA *State of Good Repair Requirement*. The preventive maintenance funding will ensure that Wave Transit vehicles are safe, reliable, and provide a positive and comfortable experience on Wave Transit routes throughout the region.

Americans with Disabilities Act (ADA) compliance utilized under the funding will be used to offset the cost of providing complementary ADA service for passengers unable to access Wave Transit fixed routes. Paratransit services provided under the WMPO authorized funding include specialized origin to destination van service. In December 2016 the Authority provided 1,674 ADA passenger trips. The period of performance for the project is 07/01/2016 through 06/30/2017.
- 4. Preventive Maintenance & ADA** - STBGP-DA funding in the amount of \$510,778 for preventive maintenance and ADA service throughout the region was approved by the WMPO in 2016. The process of flexing the funds from FHWA to FTA is in process and expected to be complete in the second quarter of calendar 2017. The funds will assist the Authority in maintaining its fleet of fixed route buses and FTA funded facilities to meet the FTA *State of Good Repair Requirement*. The preventive maintenance funding will ensure that Wave Transit vehicles are safe, reliable, and provide a positive and comfortable experience on Wave Transit routes throughout the region.

Americans with Disabilities Act (ADA) compliance utilized under the funding will be used to offset the cost of providing complementary ADA service for passengers unable to access Wave Transit fixed routes. Paratransit services provided under the WMPO authorized funding include specialized origin to destination van service. The period of performance for the project is 07/01/2017 through 06/30/2018.

February 2, 2017

**WMPO**

**TIP Projects Under Construction**

**R-3601 (US 17/74/76: C203359)** Widening across the “CAUSEWAY”, between Leland/Belville and the Cape Fear River. Replacing the bridges over the Brunswick River and one of the bridges over Alligator Creek.

**Contractor: S.T. Wooten**

**Estimated Contract Completion Date November 2016**

**Causeway is in final traffic pattern**

**Percent Complete: 99.0%. Waiting on final estimate**

**R-2633 BA – (Wilmington Bypass: C203199)** construct a 4-lane divided highway from US 74/76 (near Malmo) to SR 1430 (Cedar Hill Road).

**Estimated Contract Completion Date April 30, 2018**

**Open to traffic on November 2017**

**Contractor: Barnhill Contracting**

**Percent Complete: 65.0%**

**R-2633 BB – (Wilmington Bypass: Bridge over Cape Fear River: C203198)** construct a 4-lane divided highway from SR 1430 (Cedar Hill Road) to US 421 (where I-140 currently ends in New Hanover County...this includes the large bridge over the Cape Fear River).

**Estimated Contract Completion Date June, 2018**

**Open to traffic on November 2017**

**Contractor: Balfour Beatty Infrastructure**

**Percent Complete: 78.6%**

**R-3324 – (Long Beach Road Extension: C202155)** construct a 2-lane, 2-way roadway from NC 133 (near Jump & Run Creek) to NC 87. Most of this roadway will be on new location.

**Contractor: Balfour Beatty Infrastructure**

**Waiting on Final Estimate**

**Percent Complete: 96.7%**



**B-5103: (C203540)** replace bridge #35 over the abandoned railroad on SR 1627 (3<sup>rd</sup> Street), in Wilmington.

Estimated Contract Completion Date September 28, 2016, small “punch list” of items to be completed.

Contractor: Carolina Bridge Company

Percent Complete: 99.9%. Waiting on final estimate.

**U-3338 B: (C203772)** Widening of Kerr Ave. from Randall Parkway to Martin Luther King, Jr. Parkway.

Estimated Contract Completion Date September 2019

Contractor: Sealand Contractors Corp.

Percent Complete: 28.0%

**Wrightsville Avenue (EB-4411C: DC00119):**

Widen for bike lanes on SR 1411 (Wrightsville Ave.) from Huntington Ave. to US 76 (Oleander Drive). Pavement markings have been placed.

Estimated Contract Completion Date September 2016. Pushed back

Contractor: Highland Paving Company

Percent Complete: 100.0%. Waiting on Final Estimate

**B-4929: (C203789) Bridge @ Surf City NC 50/210** - replace bridge #16 over the inter-coastal waterway with a fixed span high rise structure. No activity to report to date. Pender County

Availability Date September 26, 2016

Estimated Contract Completion Date November 11, 2020

Contractor: Balfour Beatty Infrastructure

Percent Complete: 12.2%

**R-3432: SR 1163 (Old Georgetown Road Ext. C203163):** Add roadway extension from SR 1184 (Ocean Isle Beach Road), to NC 179.

Completion Date May 2016

Contractor: A.O.Hardee & Son, Inc.

Project is Complete. Waiting on final walk through.

### TIP Projects not under Construction

**US 421: C203922:** Grading, drainage, paving and install signal and culvert at the intersection of SR 1436 / US 421 and SR 1140 South of Willard Street. Miles (0.170).

Let Date: November 2016

**B-5236:** replace bridge #19 over Lords Creek on SR 1100 (River Road)

Let Date September 2017

**U-4751: Military Cutoff Road Extension:** extending Military Cutoff Road from Market Street to the Wilmington Bypass, with an interchange at the Bypass. **No activity to report to date.**  
**Let Date October 2017**

**R-5021:** widening of NC 211 from NC 87 to SR 1500 (Midway Road) to a 4-lane divided facility.  
**Let Date June 2018**

**U-4902 C&D: US 17 Business (Market Street)** construct a “super-street” (median) from SR 2734 (Marsh Oaks Drive) to Lendire Drive & from Station Road to US 74 (MLK Parkway/Eastwood Road).  
**Let Date October 2018**

**B-4590:** replace bridge #29 over Smith Creek on NC 133 (Old Castle Hayne Road)  
**Let Date December 2018**

**U-5729: US 421 (Carolina Beach Road)** from Burnett Avenue to US 117 (Shipyard Blvd) upgrade the roadway  
**Let Date July 2021**

**U-5790: US 421 (Carolina Beach Road)** widen existing US 421 from Sanders Road to NC 132 (College Road) and construct fly-overs at Monkey Junction intersection  
**Design Build Selection Date January 2020**

**U-5732: US 17 (Ocean Highway in Hampstead)**  
Convert to superstreet from SR 1582 (Washington Acres Road) to SR 1563 (Sloop Point Loop Road).  
**Let Date September 2020**

**U-5710: US 74 (Eastwood Road)** construct an interchange at the at-grade intersection of SR 1409 (Military Cutoff Road) & US 74 (Eastwood Road)  
**Let Date January 2022**

**Greenfield Lake Culvert:** replace the large culvert under 3<sup>rd</sup> Street and US 421 Truck/Front Street...Utility relocation work will begin late 2013 and finish prior to let date. Let Date: **Winter 2016.**

**FS-1503A: Feasibility Study US 17 Bus. (Market Street)** study the at-grade intersection of US 17 Business (Market Street), US 74 (MLK Parkway) & US 74 (Eastwood Road) for installment of an interchange.

**FS U-5734: Feasibility Study S. Front Street** study the widening of S. Front Street from the intersection of Burnett Blvd. and US 421 (Carolina Beach Road), to Dawson Street.

**Environmental Assessment in progress.**

## **Resurfacing Contracts - New Hanover County**

### **Mill & resurface the following primary routes in New Hanover County: 2017CPT.03.07.20651**

- SR 1318 (Blue Clay Rd.)** – from radius at intersection of SR 1322 (Kerr Ave.) to pvmt seam at US 117. 2.89 miles.
- SR 1324 (Sheridan Dr.)** – from NC 133 to SR 1325 (Long Leaf Drive).
- SR 1325 (Long Leaf Dr.)** – from SR 1326 (Laurel Drive) to SR 1358 (Holland Drive).
- SR 1326 (Laurel Dr.)** – from SR 1358 (Holland Drive) to dead end.
- SR 1332 (Chair Rd.)** – from NC 133 west on NC 133.
- SR 1382 (Garden Place Dr.)** – from NC 132 to SR 1387 (Hyacinth Ave.)
- SR 1383 (Wedgewood Rd.)** – from SR 1382 (Garden Place Dr.) to dead end.
- SR 1387 (Hyacinth Ave.)** – from SR 1382 (Garden Place Dr.) to dead end.
- SR 1668 (Balsam Dr.)** – from SR 1667 (Hickory Knoll Dr.) to SR 1668 (Balsam Dr.).
- SR 1669 (Darley Ln.)** – from SR 1667 (Hickory Knoll Dr.) to SR 1686 (Royal Oak Dr.)
- SR 1686 (Royal Oak Dr.)** – SR 1492 (Myrtle Grove Rd.) to SR 1667 (Hickory Knoll Dr.)
- SR 2071 (Arlene Dr.)** – from NC 133 to end of maintenance.
- SR 2181 (Blue Clay Rd. / Dairy Farm Rd.)** – from SR 1002 (Holly Shelter Rd.) to SR 1336 (Sidbury Rd.).
- SR 2199 (Creekstone Ln.)** – from SR 1335 (Parmele Rd.) to end of maintenance.
- SR 2200 (Plum Tree Lane)** – from SR 2199 (Creekstone Ln.) to end of maintenance.
- SR 2501 (Access Rd. to Monkey Jct.)** – from US 421 to US 421.
- SR 1322 (Murrayville Rd.)** – from SR 2234 (Brittany Rd.) to SR 2691 (Retriever Dr.).
- SR 2313 (Wilshire Blvd.)** – from west of SR 1175 (Kerr Ave.) to east of Rosemont Ave.
- SR 1400 (Flutch Creek Rd./Champ Davis Rd.)** – from south of SR 2845 (Market Street) to SR 1491 (Porters Neck Rd.)
- SR 2652 (Northchase Pkwy. NE)** – from US 117 to cul-de-sac

**Let Date Spring: 2017**

### **Mill & resurface the following primary routes in New Hanover County:**

- US 421 (Carolina Beach Road)** – from 0.26 miles south of Independence Blvd. (non-system portion) to west of Lake Shore Drive (non-system)
- US 117 Northbound Lanes (Shipyard Blvd)** – from US 421 to 0.05 miles east of US 421 (Carolina Beach Road)
- US 117 Southbound Lanes (Shipyard Blvd)** – from 0.20 miles east of US 421 to US 421 (Carolina Beach Road)
- US 421 Southbound Lanes (South 3<sup>rd</sup> Street)** – from US 76 (Dawson Street)

to Greenfield Street (non-system)

**US 421 Northbound Lanes (South 3<sup>rd</sup> Street)** – from Greenfield Street (non-system) to US 76 (Dawson Street)

**US 17 Business (South 3<sup>rd</sup> Street)** – from US 76 eastbound lanes to US 76 westbound lanes

**Mill & resurface the following secondary routes in New Hanover County:**

**SR 1218 (16<sup>th</sup> Street)** – from US 76 westbound lanes (Wooster Street) to US 76 eastbound lanes (Dawson Street)

**SR 1371 (16<sup>th</sup> St.)** - from Grace Street (non-system) to US 17 Business (Market Street)

**SR 2816 (16<sup>th</sup> St.)** - from US 17 Business (Market Street) to US 76 westbound lanes (Wooster Street)

**SR 1301 (17<sup>th</sup> Street)** - from US 17 Business (Market Street) to Grace Street (non-system)

**SR 2817 (17<sup>th</sup> Street)** - from US 76 eastbound lanes (Dawson Street) to US 17 Business (Market Street)

**SR 1411 (Wrightsville Avenue)** - from Dawson Street Extension (non-system) to SR 1209 (Independence Blvd.)

**Resurface the following secondary routes in New Hanover County:**

**SR 2699 (Amsterdam Way)** - from SR 2700 (Old Dairy Rd.) to SR 2048 (Gordon Rd.)

**SR 2701 (Antilles Ct.)** - from SR 2698 (Netherlands Dr.) to end maintenance

**SR 2698 (Netherlands Dr.)** - from SR 2048 (Gordon Rd.) to SR 2700 (Old Dairy Rd.)

**SR 2700 (Old Dairy Rd.)** - from US 17 Bus. (Market St.) to SR 2699 (Amsterdam Way)

**SR 2220 (Windmill Way)** - from SR 2219 (N. Green Meadows Dr.) to SR 2700 (Old Dairy Rd.)

**SR 2183 (Spring Rd)** - from NC 133 (Castle Hayne Rd.) to SR 2184 (Fairfield Rd.)

**SR 2184 (Fairfield Rd.)** - from SR 2183 (Spring Rd) to SR 1318 (Blue Clay Rd)

**Widen & resurface following routes in New Hanover County:**

**SR 1940 (Covil Farm Rd)** - from SR 1409 (Military Cut-Off Rd) to SR 1916 (Red Cedar Rd)

**SR 2717 (Torchwood Blvd.)** - from US 17 Bus. (Market St.) to SR 2718 (Beacon Dr.)

**Mill & resurface a section & just resurface another section of SR 1363 (Bayshore Dr.)** from US 17 Bus. (Market St.) to SR 1393 (Biscayne Dr.)

**New Hanover:**

**I-40** – milling & resurfacing from Gordon Road interchange to NC 210 interchange

**I-40** – milling & resurfacing from US 117 interchange to mile post 393 (approximately 3.5 miles east of US 117 interchange)

**Estimated Contract Completion Date December 2016**

**No activity to report to date**

**Resurfacing Contract: 2016CPT.03.07.20651**

**New Hanover County: Various Secondary Rds. & NC State Port Authority Property**

**SR 1335 (Parmele Road)** resurfacing from NC 133 (Castle Hayne Road) to US 117/NC 132 (North College Road)

**SR 1276 (Cathay Road)** resurfacing from US 421 (Carolina Beach Road) to SR 1281 (Ventura Drive)

**SR 1524 (Golden Road)** resurfacing from US 421 (Carolina Beach Road) to SR 1492 (Myrtle Grove Road)

**SR 1544 (Friendly Lane)** resurfacing from SR 1492 (Masonboro Loop Road) to end of system

**SR 1616 (Pelican Point)** resurfacing from SR 1492 (Masonboro Loop Road) to end of system

**SR 1386 (Hall Drive)** resurfacing from SR 1318 (Blue Clay Road) to SR 1312 (Trask Drive)

**SR 1311 (Gardner Drive)** resurfacing from SR 1312 (Trask Drive) to SR 1312 (Trask Drive)

**SR 1312 (Trask Drive)** resurfacing from SR 1311 (Gardner Drive) to SR 1311 (Gardner Drive)

**State Port Roadway resurfacing**

**Estimated Contract Completion Date Summer 2016**

**Progress Schedule is at 100%. Waiting on final estimate.**

**New Hanover County: Resurfacing Contract: DC00155**

**SR 1310 (Division Drive)** from NC 133 (Castle Hayne Road) to SR 1302 (23<sup>rd</sup> Street)

**SR 2270 (Wood Sorrell Road)** from SR 2048 (Gordon Road) to SR 2219 (N. Green Meadows Road)

**SR 2281 (Spicewood Street)** from Wood Sorrell Road to N. Green Meadows

**SR 2054 (Diamond Dr)** from SR 2154 (Little Creek Rd) to SR 2053 (Apple Road)

**SR 2219 (N. Green Meadows Rd)** from Wood Sorrell Rd to Spicewood St.

**SR 2266 (Twin Leaf Rd)** from SR 2286 (Strawfield Dr) to SR 2018 (Fitzgerald Dr)

**SR 2267 (Bracken Fern Road)** from Twin Leaf Road to cul-de-sac

**SR 2268 (Butterfly Court)** from Bracken Fern Road to cul-de-sac

**SR 2271 (Rushwood Court)** from Wood Sorrell Road to cul-de-sac

**SR 2272 (Sunwood Circle)** from Wood Sorrell Road to Wood Sorrell Road

**SR 2273 (Cainslash Court)** from Sunwood Circle to cul-de-sac

**SR 2274 (Emberwood Road)** from Wood Sorrell Road to cul-de-sac

**SR 2275 (Vinewood Court)** from Emberwood Road to cul-de-sac

SR 2276 (**Pearwood Court**) from Vinewood Court to cul-de-sac  
SR 2277 (**Mintwood Court**) from Wood Sorrell Road to cul-de-sac  
SR 2278 (**Wood Sorrell Loop**) from Wood Sorrell Road to Wood Sorrell Road  
SR 2279 (**Red Bay Court**) from Wood Sorrell Road to cul-de-sac  
SR 2280 (**Red Bay Loop Road**) from Red Bay Court to Red Bay Court  
SR 2282 (**Low Bush Court**) from Spicewood Street to cul-de-sac  
SR 2283 (**Spicewood Loop Road**) from Spicewood Street to cul-de-sac  
SR 2284 (**Lupine Court**) from Spicewood Street to cul-de-sac  
SR 2285 (**Golden Astor Court**) from Spicewood Street to cul-de-sac  
SR 2286 (**Strawfield Drive**) from N. Green Meadows Road to  
N. Green Meadows Road  
SR 2287 (**Sweetbay Court**) from Strawfield Drive to cul-de-sac  
SR 2294 (**Silver Grass Court**) from Wood Sorrell Road to cul-de-sac  
SR 2295 (**Cherry Laurel Court**) from Wood Sorrell Road to cul-de-sac  
SR 2297 (**Nettle Circle**) from Strawfield Drive to Strawfield Drive  
SR 2298 (**Fern Court**) from Nettle Circle to cul-de-sac  
SR 2299 (**Batsonwood Court**) from Wood Sorrell Road to cul-de-sac  
SR 2618 (**High Bush Court**) from Strawfield Drive to cul-de-sac  
SR 2687 (**Legend Drive**) from SR 2683 (Enterprise Drive) to cul-de-sac  
SR 2688 (**Promenade Court**) from Legend Drive to cul-de-sac  
SR 1327 (**Farley Road**) from SR 1175 (Kerr Ave.) to Kerr Ave.  
SR 2686 (**Justus Court**) from Enterprise Drive to cul-de-sac  
SR 2685 (**Drewman Court**) from Enterprise Drive to cul-de-sac

**Estimated Contract Completion Date November 2016**

**Contractor: Highland Paving Company**

**Percent Complete: 20.5%**

**New Hanover County: Resurfacing Contract: C203868, I-5760**

I-140 (**Wilmington Bypass**) resurface from I-40 to US 421 & reconstruction of bridge approaches, joint repair & signals. **No activity to report to date.**

**Contractor: Barnhill Contracting Company**

**Availability Date September 26, 2016**

**Estimated Contract Completion Date August 2017**

**New Hanover County: Resurfacing Contract: 2017CPT.03.01.10651 C203888**

**US 117/NC 132 (College Road)** from US 17 Business (Market Street) to  
SR 2313 (Wilshire Blvd.)

**Includes safety projects:**

**W-5203AA** construct offset left turn lanes on College Road & Hurst/Hoggard Drive upgrade pedestrian facilities to high visibility crosswalks w/ countdown pedestrian heads. Extend sidewalk to connect with existing sidewalk.

**W-5601BB** install high visibility crosswalks & push button pedestrian signals at the intersection of College Road & New Center Drive.

**WBS #36249.3622** City of Wilmington signal plan modifications & work to install pedestrian upgrades at the intersection of US 117/NC 132 (College Road) and SR 2313 (Wilshire Blvd).

No activity to report to date.

**Contractor: Barnhill Contracting Company**

**Availability Date September 26, 2016**

**Estimated Contract Completion Date February 2018**

## Resurfacing Projects - Brunswick County

**Resurfacing Contract: C203923, 2017CPT.03.06.10101 & 2017CPT.03.06.20101**

**Brunswick County primary routes: US 74/US 76/NC 87, NC 179, NC 904/179 & Various Roads**

**Let Date: October 2016**

**Resurfacing Contract: C203480**

**Brunswick County primary routes:**

**US 17 Business** – mill & resurface from US 17 (south end of US 17 Bus.) to US 17 (@ nose of concrete island)...Bolivia area

**US 17 Bypass (Southbound lanes)** – patch, mill & resurface from 0.17 miles north of SR 1401 (Galloway Road) to 0.09 miles south of SR 1401

**Contractor: Barnhill Contracting**

**Percent Complete: 98.7%. Waiting on final estimate**

**Resurfacing Contract: I-5357, C203630, WBS #46176.3.FS1, Brunswick County secondary routes:**

**SR 1104 (Beach Drive)** – patching, milling, resurface & leveling from beginning of curb & gutter section to end of SR 1104

**SR 1828 (Kings Lynn Drive)** – patching, mill & resurface from SR 1104 (West Beach Drive) to SR 1828

**SR 1401 (Galloway Road)** – resurface from US 17 to SR 1402 (Randolphville Road)

**SR 1435 (North Navassa Road)** – patching, mill & resurface from SR 1472 (Village Road Northeast) to SR 1432 (Old Mill Road Northeast)

**SR 1430 (Cedar Hill Road)** – patching, mill & resurface from SR 1435 (North Navassa Road) to 0.58 miles south of SR 1431 (Royster Road Northeast)

**SR 1430 (Cedar Hill Road)** – patching, mill & resurface from 0.54 miles north of SR 1431 (Royster Road Northeast) to SR 1426 (Mount Misery Road)

**Completion Date: October 2016**

**Contractor: S.T. Wooten**

**Percent Complete: 90.1%. Waiting on estimate to be finalized**

**Resurfacing Contract: DC00117, Brunswick County:**

**NC 87/NC 133 (River Road)** resurfacing from project limits of R-3324 (Long Beach Road Extension) to SR 1526 (Jabbertown Road)  
**SR 1100 (Caswell Beach Road)** milling & resurfacing from SR 1190 (Oak Island Drive) to end of system  
**SR 1101 (Fish Factory Road)** resurfacing from NC 133 (Long Beach Road) to end of system  
**SR 1194 (West Street)** resurfacing from NC 211 to end of system, in Southport  
**SR 1209 (9<sup>th</sup> Street)** resurfacing from NC 211 to end of system, in Southport  
**SR 1210 (Old Bridge Road)** resurfacing from NC 133 (Long Beach Road) to end of system  
**SR 1526 (Jabbertown Road)** resurfacing from NC 87 to SR 1527 (Leonard Street), in Southport  
**SR 1528 (Moore Street)** resurfacing from NC 211 to end of system, in Southport

**Contractor: Highland Paving Company**

**Work Complete. Waiting on estimate to be finalized**

**Resurfacing Contract: 2016, C203760, Brunswick County:**

**US 17 NBL & SBL** resurfacing from NC 904 to South Carolina line  
**SR 1139 (Seashore Road)** resurfacing from NC 130 (Holden Beach Road) to **SR 1137 (Boones Neck Road)**  
**SR 1184 (Ocean Isle Beach Road)** resurfacing from US 17 to NC 904/179  
**SR 1241 (Milliken Avenue)** resurfacing from **SR 1242 (Beach Drive)** resurfacing from NC 179 Bus. to end of the system  
**SR 1940 (Claremont Drive)** resurfacing from SR 1941 (Stratford Place) to end of the system  
**SR 1941 (Stratford Place)** resurfacing from SR 1943 (Country Club Drive) to SR 1940 (Claremont Drive)  
**SR 1942 (Bruce Lane)** resurfacing from SR 1941 (Stratford Place) to SR 1944 (Deep Branch Road)  
**SR 1944 (Deep Branch Road)** resurfacing from SR 1942 (Bruce Lane) to SR 1940 (Claremont Drive)  
**SR 1813 (Pinewood Drive)** resurfacing from SR 1950 (Camelia Drive) to end of system  
**SR 1943 (Country Club Drive)** resurfacing from SR 1949 (Brierwood Road) to SR 1941 (Stratford Place)  
**SR 1949 (Brierwood Road)** resurfacing from SR 1943 (Country Club Drive) to Shallotte City Limits  
**SR 1950 (Camelia Drive)** resurfacing from SR 1141 (Kirby Road) to SR 1813 (Pinewood Drive)  
**SR 1951 (Driftwood Acres Drive)** resurfacing from SR 1950 (Camelia Drive) to end of the system  
**SR 1952 (Myrtlewood Drive)** resurfacing from SR 1950 (Camelia Drive) to end of the system

**Estimated Contract Completion Date November 2016**

**Percent Complete: 69.1%**



## Resurfacing Projects - Pender County

### **Pender County primary routes:**

**US 117** - mill & resurface from 0.30 miles north of NC 210 to 0.026 miles north of US 117 Business

**NC 11/53** - mill & resurface from begin curb & gutter @ western city limits of Town of Atkinson to end curb & gutter @ the eastern city limits.

**NC 53** - Patch ONLY from I-40 to US 117 (Town of Burgaw).

**Estimated Contract Completion Date Spring/Summer 2016**

**Progress Schedule at 100%. Waiting on estimate to be finalized**

### **Resurfacing Contract: C203746, Pender County:**

**US 117 Bypass** milling & resurfacing from southern city limits of Burgaw to SR 1504 (Murphy Road).

**NC 53** milling & resurfacing from US 117 Bypass to US 117 Business

**SR 1104 (Canetuck Road)** resurfacing from bridge #20 over Lyon Creek to Bladen County line

**SR 1301 (Bay Road)** resurfacing from SR 1300 (Englishtown Road) to SR 1001 (Willard Road)

**SR 1411 (Old River Road)** resurfacing from US 117 to SR 1412 (New Road)

**Contractor: Barnhill Contracting Company**

**Work Complete at 100%. Waiting on estimate to be finalized**

### **Resurfacing Contract: 2017CPT.03.31.20711 DC00136, Pender County:**

**SR 1113 (Montague Road)** resurface from SR 1114 (Blueberry Road) to US 421

**SR 1412 (Newroad Ave., Front St. & Dickerson St.)** resurface from US 117 to Hayes Road.

**Contractor: Barnhill Contracting Company**

**Estimated Contract Completion Date October 2016**

**Progress Schedule is at 100%. Waiting on estimate to be finalized.**

If you have any questions, please contact Alan Pytcher at the Division 3 Office:  
(910) 341-2000, [apytcher@ncdot.gov](mailto:apytcher@ncdot.gov)